

Aging Texas Well

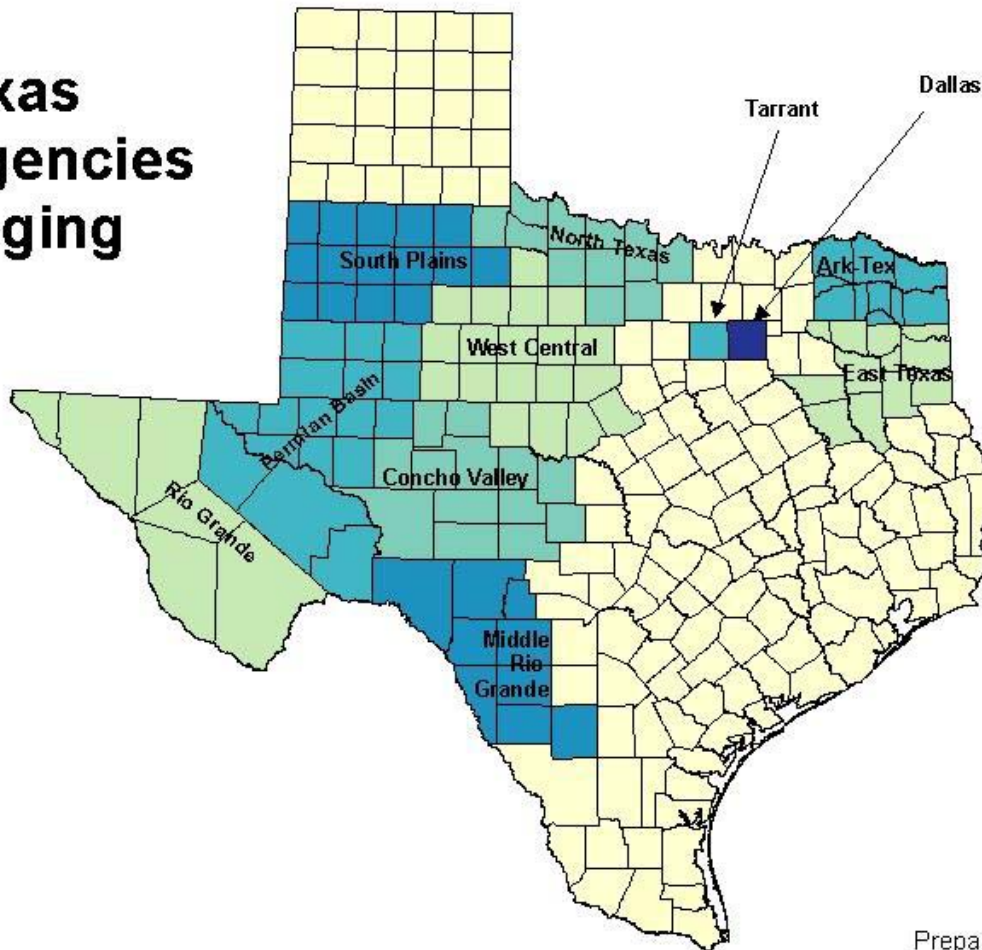


Opportunities for Texans Across the Lifespan

Rio Grande AAA Demographic Profile

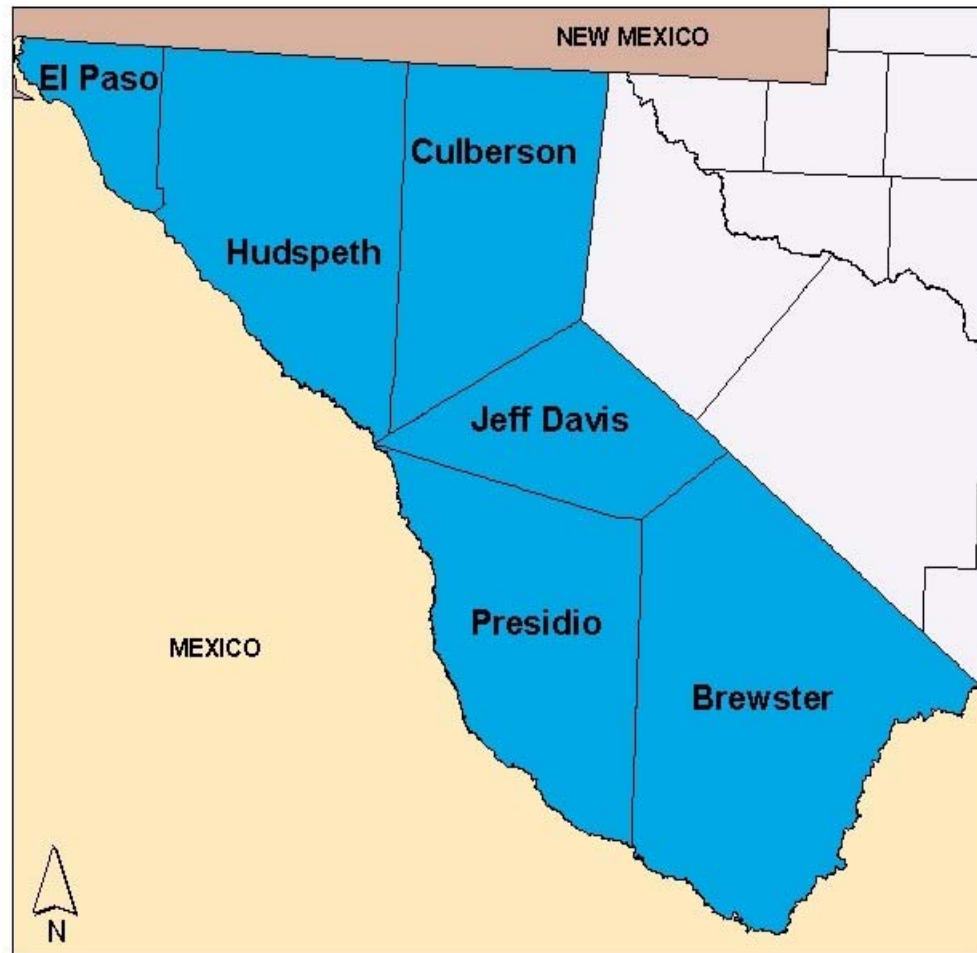
Cruz C. Torres, RN Ph.D.
Department of Rural Sociology
Hispanic Research Program

Texas Area Agencies on Aging



Prepared for Aging Texas Well
Department of Rural Sociology
Texas A&M University
2003

Rio Grande Area Agency on Aging



Prepared for Texas Aging Well
Department of Rural Sociology
Texas A&M University
2003

Socioeconomic Profile: Income

- Per capita income for Rio Grande AAA is \$13,008 vs. \$19,617 for Texas per capita income
 - Hudspeth County has the lowest per capita income at \$9,549
 - Jeff Davis County has the highest per capita income at \$18,846
- Median household income in the Rio Grande AAA is \$26,239 vs. \$39,927 for Texas
 - Presidio County has the lowest median household income at \$19,860
 - Jeff Davis County has the highest median household income at \$32,212

Socioeconomic Profile: Poverty

- 23.9% of Rio Grande AAA residents live below poverty vs. 15.4% of Texas residents
 - Presidio County has highest poverty rate: 36.4%
 - Jeff Davis County has lowest poverty rate: 15.0%
- 18.9% of Rio Grande AAA elderly live below poverty vs. 12.8% of Texas elderly
 - Presidio County has highest rate of elderly living below poverty, 44.1%
 - Brewster County has the lowest rate of elderly living below poverty, 13.0%

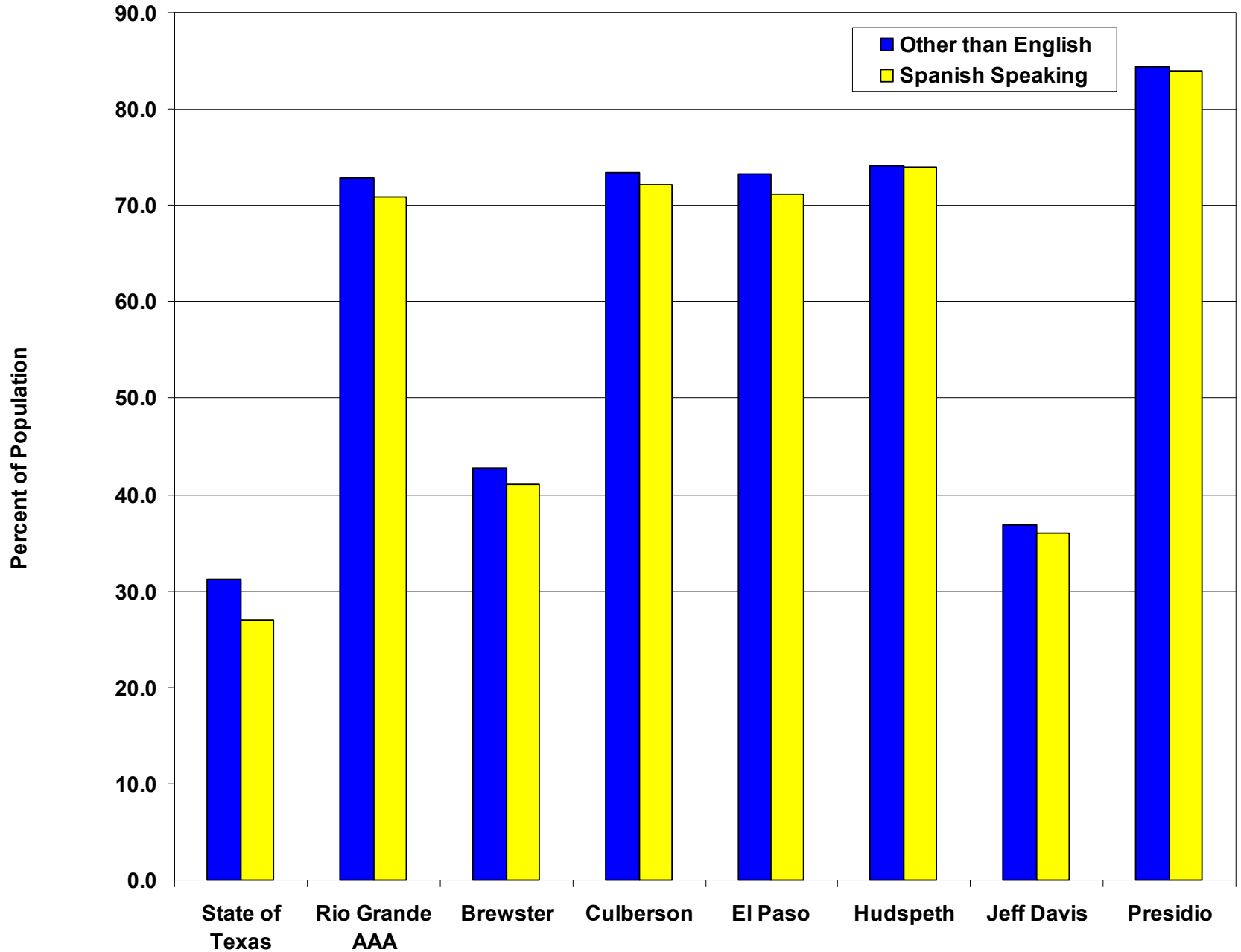
Elderly Household Characteristics

- 19.5% of Rio Grande AAA households include a member that is 65+ vs. 17.7% of Texas households
 - Presidio Co. has highest rate of households with someone 65 years old or older, 29.4%
 - El Paso Co. has the lowest rate of households with someone 65 years old or older, 19.2%
- 7.0% elderly live alone in Rio Grande AAA compared to 7.3% of Texas elderly
 - Presidio Co. has the highest rate of elderly living alone, 12.5%
 - El Paso Co. has the lowest rate of elderly living alone, 6.8%
- The percent of elderly with disabilities in Rio Grande AAA is 48.1% vs. 44.8% - the State rate
 - Presidio Co. elderly report the highest disability rate, 59.1%
 - Culberson Co. elderly report the lowest disability rate, 39.4%

Language & Education Profile

- 72.9% of Rio Grande AAA residents speak a language other than English vs. 31.2 % of Texas residents
 - Presidio Co. has highest rate, 84.4%
 - Jeff Davis Co. has the lowest rate, 36.9%
- 70.8% of Rio Grande AAA residents speak Spanish vs. 27.0% of Texas residents
 - Presidio Co. has highest rate of Spanish speakers, 83.9%
 - Jeff Davis Co. has the lowest rate, 36.0%
- High School completion or equivalency in Rio Grande AAA is 65.6% vs. 75.7% for Texas
 - Brewster Co. has highest HS completion rate, 78.6%
 - Presidio Co. has lowest rate, 44.7%

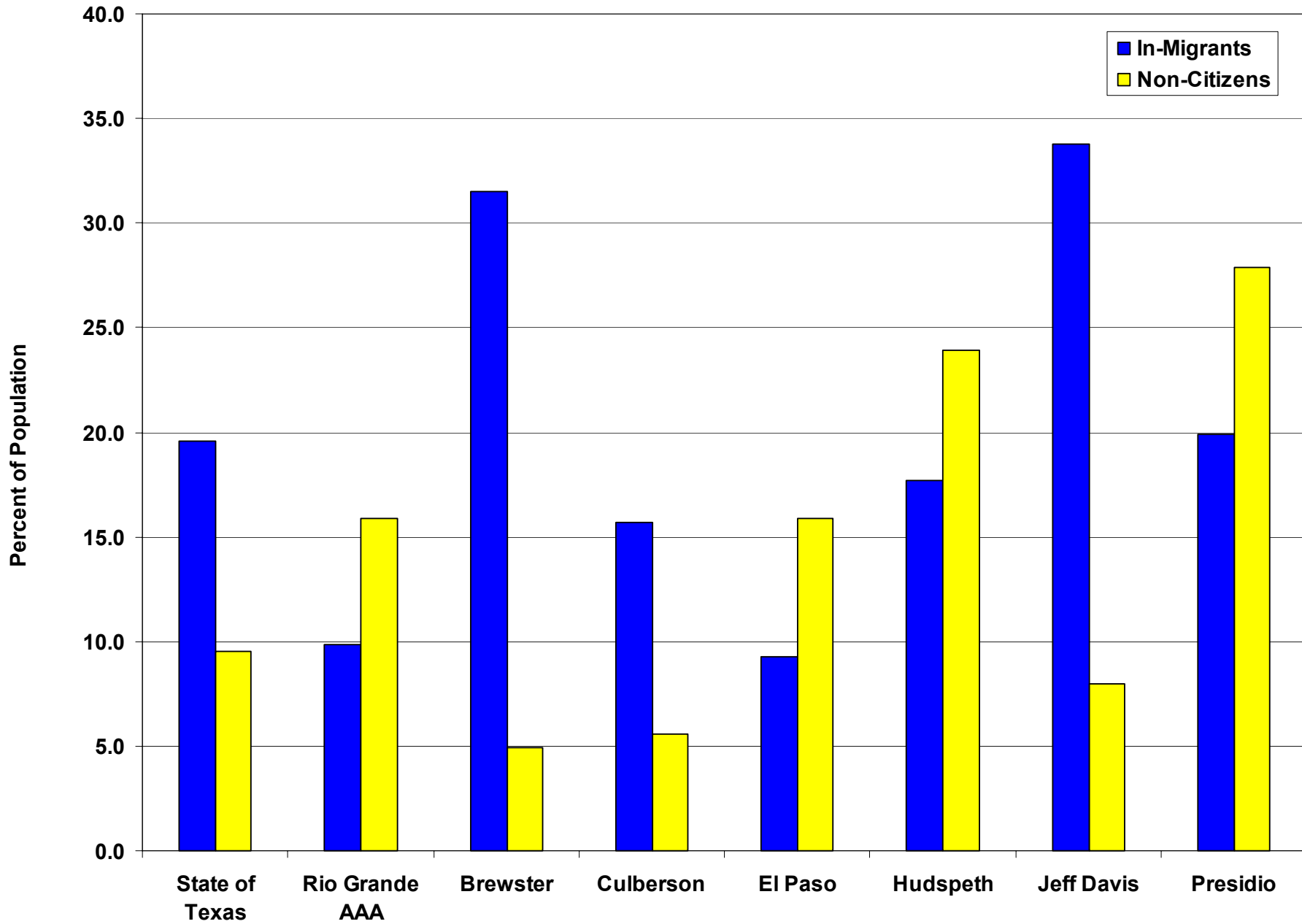
Figure 1: Texas and Rio Grande AAA Language Diversity in 2000



Residency Status of Population

- In-migration rate for the Rio Grande AAA residents is 9.9% vs. 19.6% for Texas
 - Jeff Davis Co. has highest in-migration rate, 33.8%
 - El Paso Co. has lowest in-migration rate, 9.3%
- Non-citizen rate for Rio Grande AAA residents is 15.9% vs. 9.5% for Texas
 - Presidio Co. has the highest rate, 27.9%
 - Brewster Co. has the lowest rate, 4.9%

Figure 2. Texas and Rio Grande AAA Resident Characteristics in 2000



Ethnic Diversity

- Rio Grande AAA has a lower percent of non-Hispanic White residents than Texas, 18.1% vs. 53.1%
 - Jeff Davis Co. has highest rate of non-Hispanic Whites, 63.2%
 - Presidio Co. has lowest rate of non-Hispanic Whites, 15.0%
- 77.7% of Rio Grande AAA residents are Hispanic vs. 32% of Texas residents
 - Presidio Co. has highest rate of Hispanics, 84.4%
 - Jeff Davis Co. has lowest rate of Hispanics, 35.5%
- 2.8% of Rio Grande AAA residents are African American vs. 11.6% of Texas residents
 - El Paso Co. has highest rate of African Americans, 2.9%
 - Hudspeth and Presidio Co. have the lowest rate of African Americans, 0.2%
- Figures 3a, 3b, 3c illustrate the projected decrease in non-Hispanic Whites and the corresponding increase in Hispanics

Figure 3a. Texas and Rio Grande AAA Ethnic Diversity in 2000

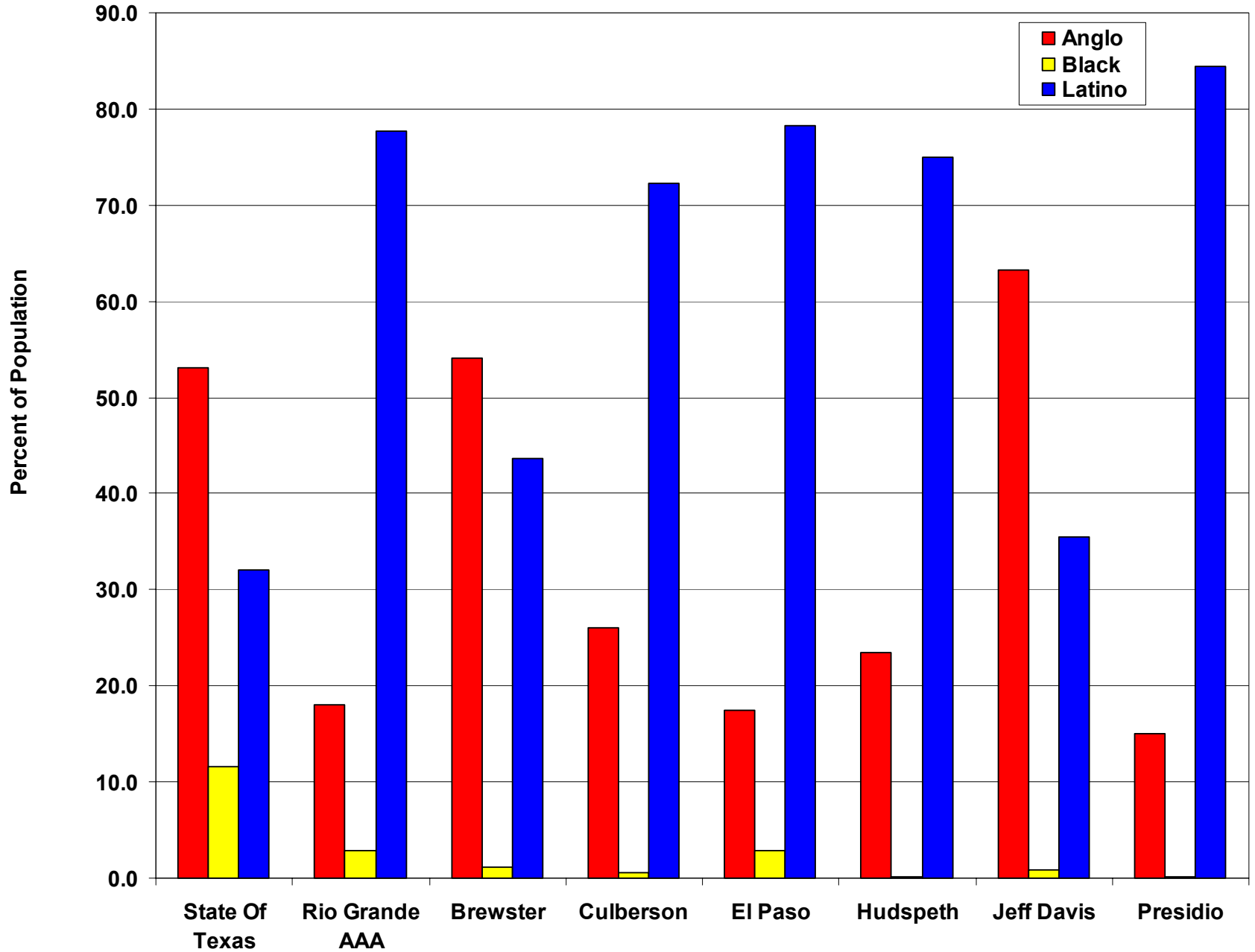
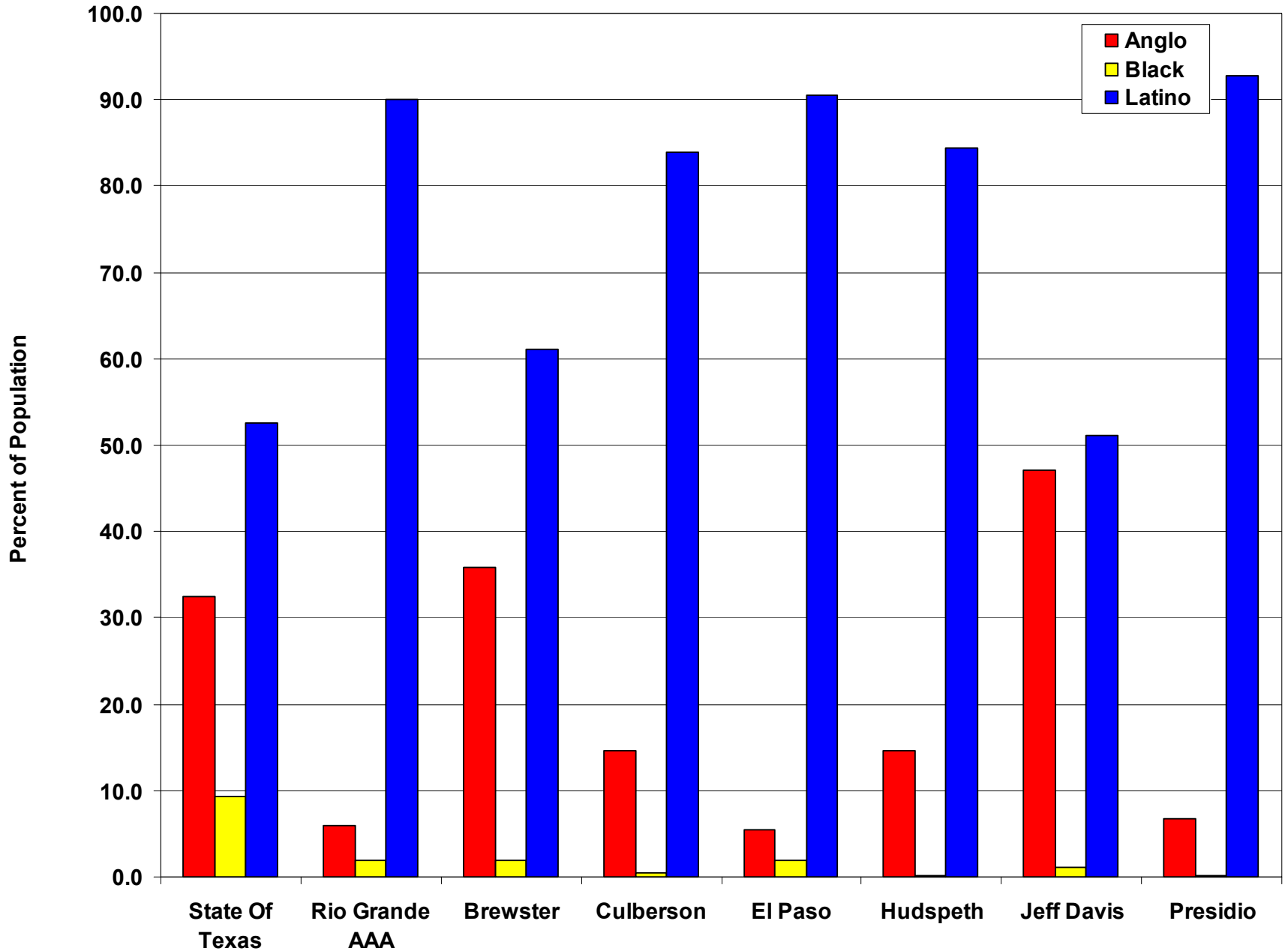


Figure 3c. Texas and Rio Grande AAA Ethnic Diversity in 2040



Current & Projected Elderly Population

- Figure 4 illustrates current and projected elderly percent of population
- Figures 5a, 5b, 5c illustrate the ethnic shift that will occur in the elderly population by 2040
- Figures 5d, 5e, 5f illustrate the increase of elderly within each ethnic population
- Figures 6a, 6b, 6c illustrate the current and projected sex ratio among the elderly
- Figures 7a, 7b, 7c (in your packet) illustrate the current and projected proportion of the population that will be elderly for each ethnic group by 2040

Figure 4. Current and Projected Percent of Population that will be Elderly

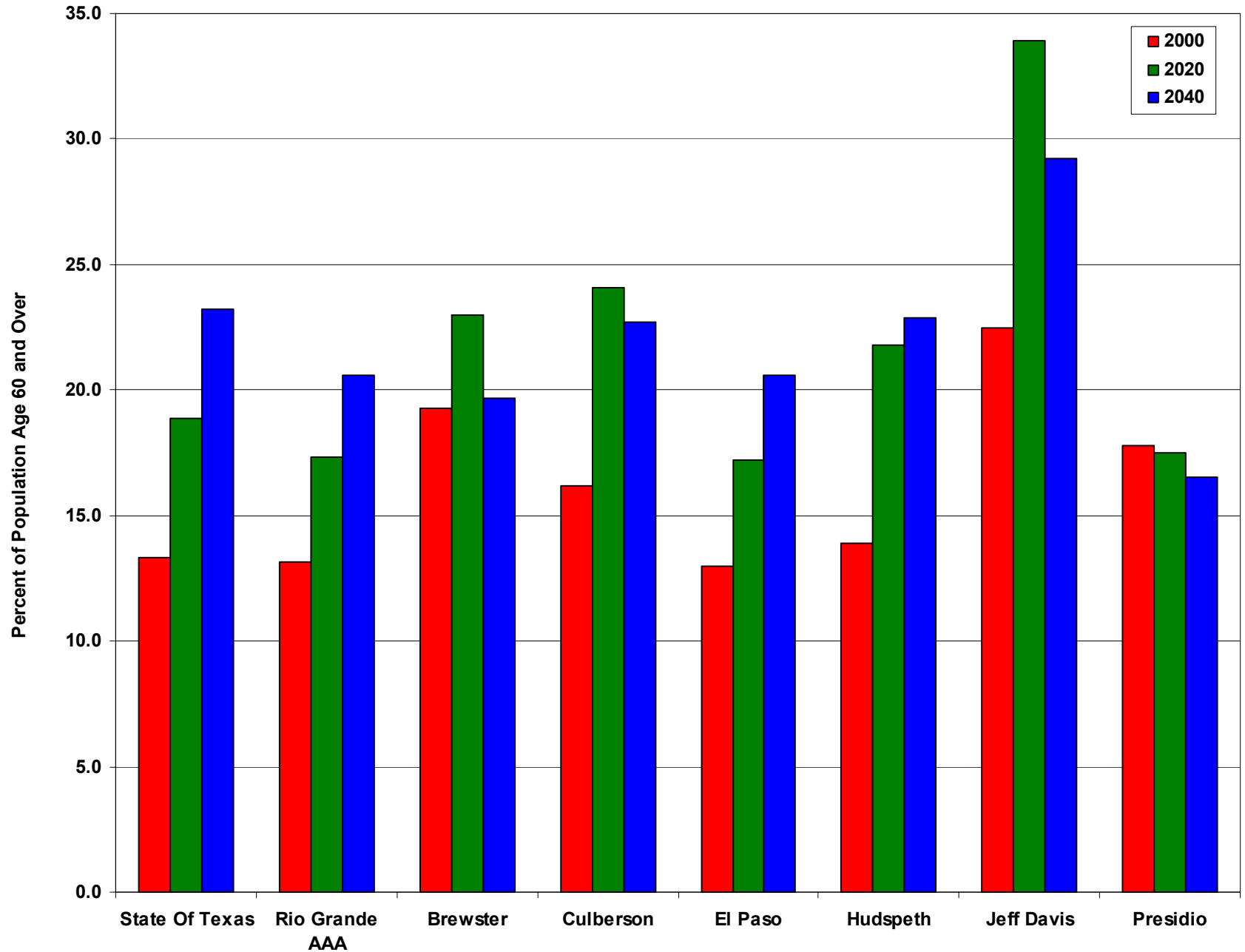
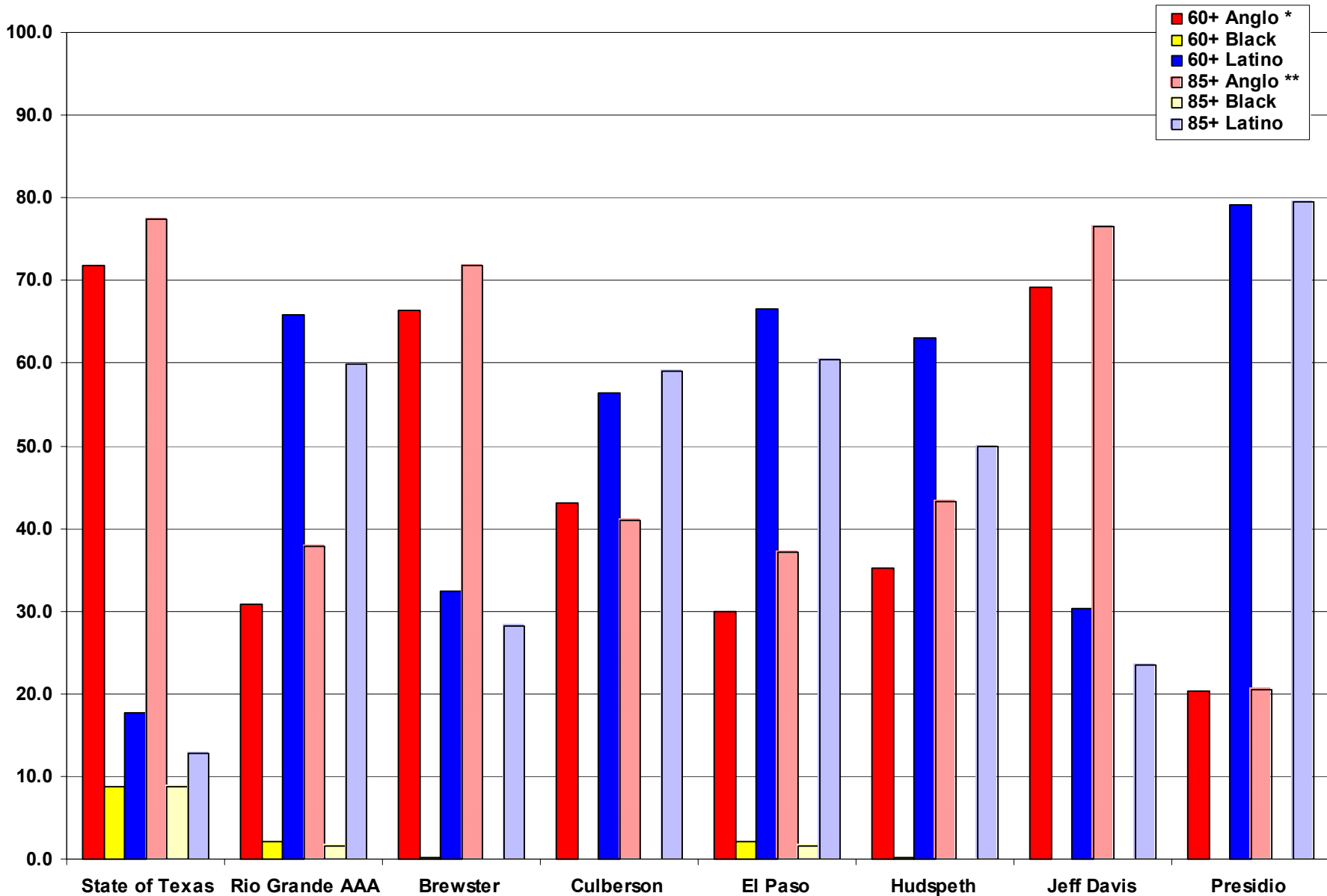


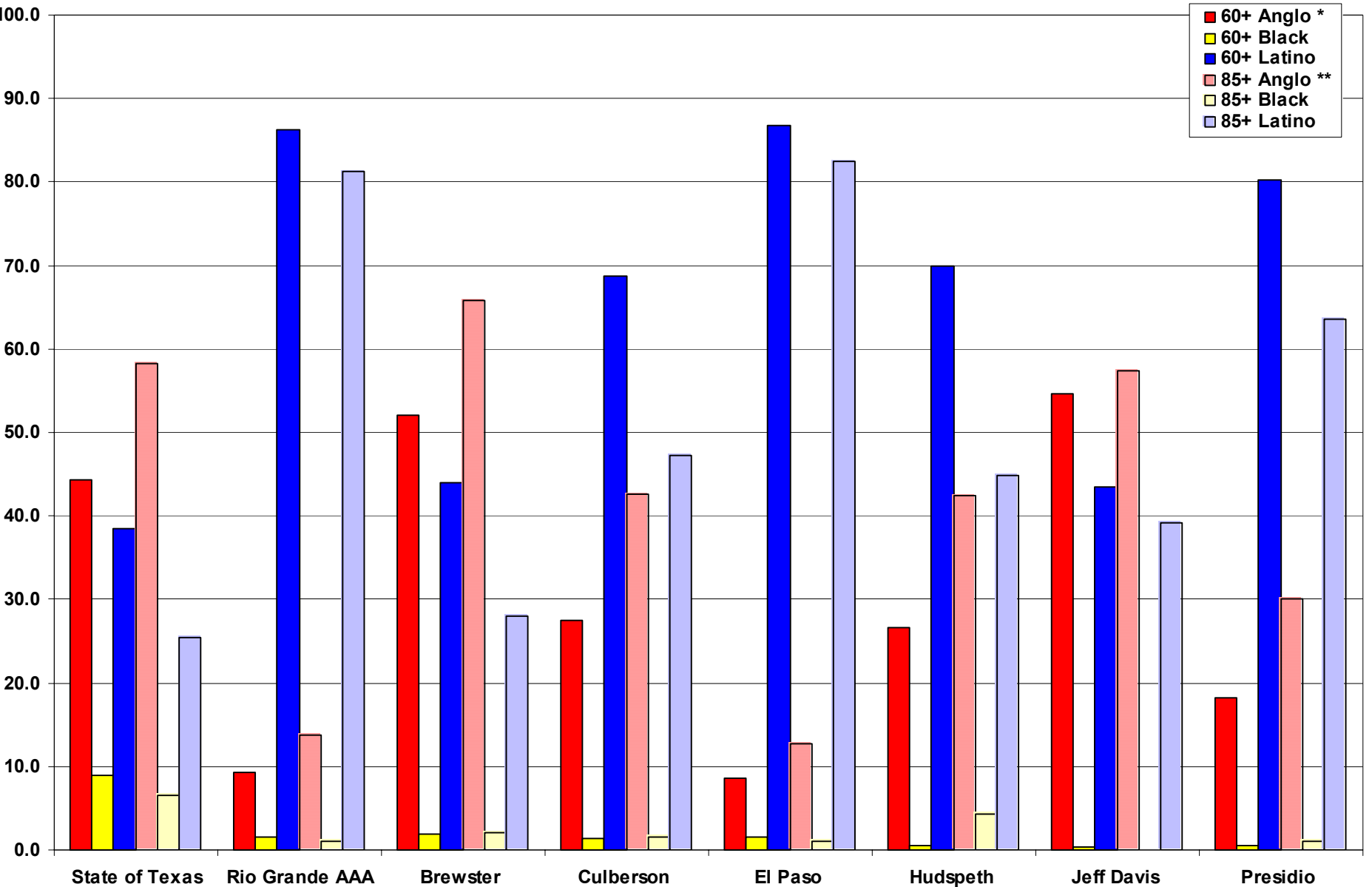
Figure 5a. Percent of the Elderly by Ethnic Group and Age Group in 2000



* Example: Of the total elderly (60+) in Rio Grande AAA in 2000, 30.8% are non-Hispanic White. (white elderly / total elderly)*100 = 30.8%

** Example: Of all residents over 85 years in Rio Grande AAA in 2000, 37.8% are non-Hispanic White. (white 85+ / total 85+)*100 = 37.8%

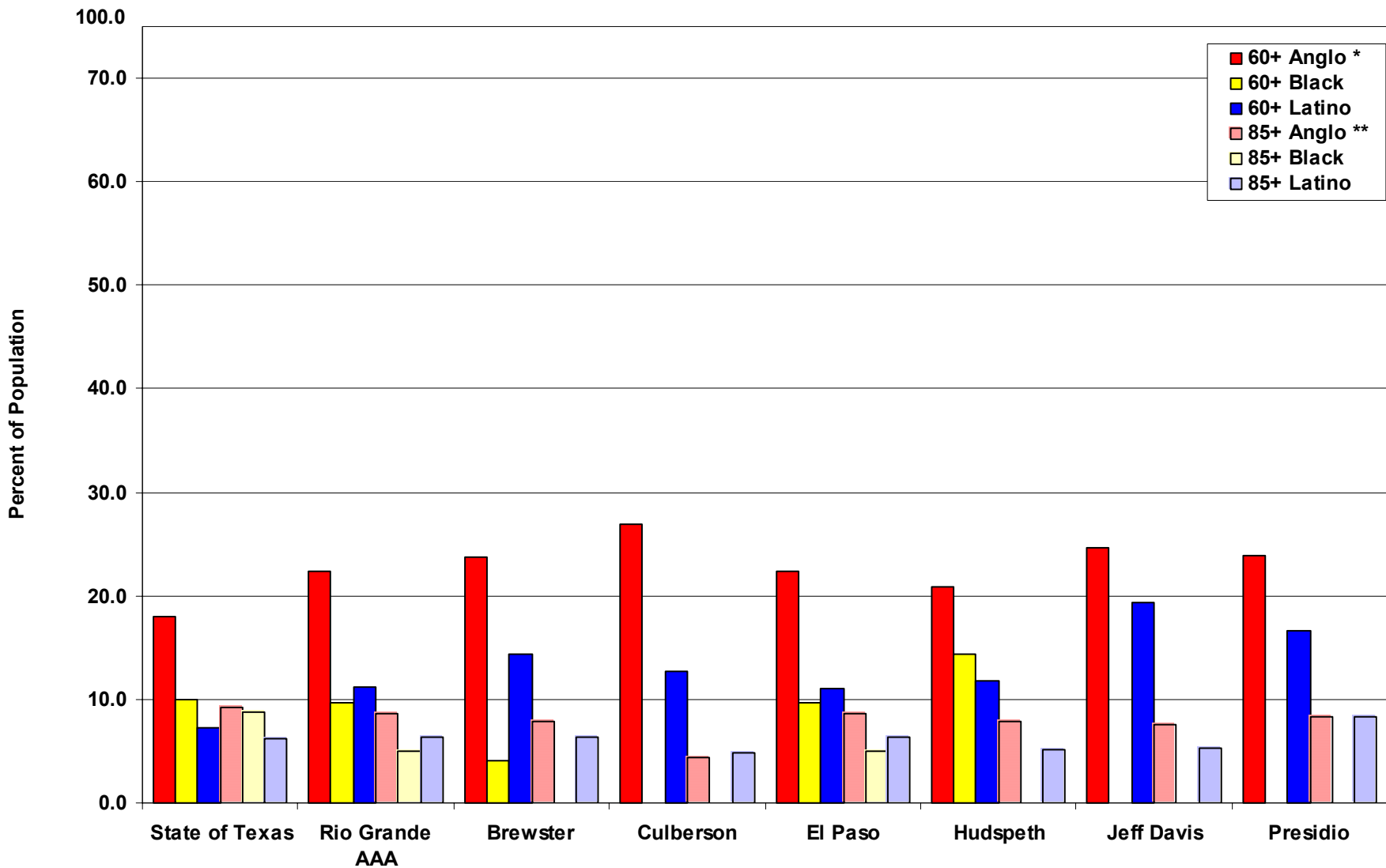
Figure 5c. Percent of the Elderly by Ethnic Group and Age Group in 2040



* Example: Of the total elderly (60+) in Rio Grande AAA in 2040, 9.2% are non-Hispanic White. $(\text{white elderly} / \text{total elderly}) * 100 = 9.2\%$

** Example: Of all residents over 85 years in Rio Grande AAA in 2040, 13.8% are non-Hispanic White. $(\text{white 85+} / \text{total 85+}) * 100 = 13.8\%$

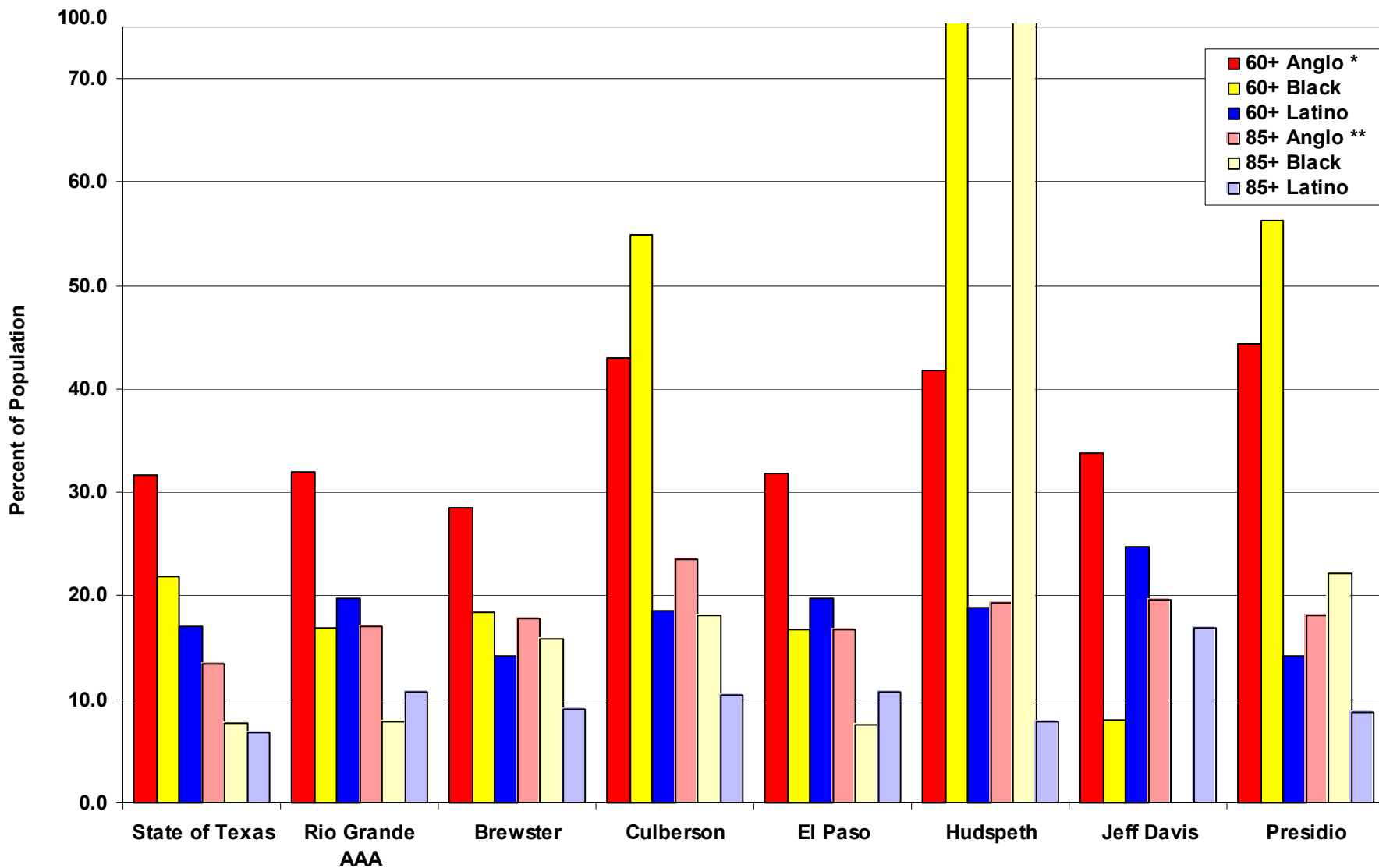
Figure 5d. Percent of the Population within each Ethnic Group that are 60+ and Percent of those 60+ that are 85 and Older in 2000



* Example: Of the total non-Hispanic Whites living in Rio Grande AAA in 2000, 22.4% are over the age of 60 years.

** Example: Of the total non-Hispanic Whites 60+ in Rio Grande AAA in 2000, 8.6% are 85+. (white 85+ / white 60+)*100 = 8.6%.

Figure 5f. Projected Percent of the Population within each Ethnic Group that are 60+ and Percent of those 60+ that are 85 and Older in 2040



* Example: Of the total non-Hispanic Whites living in Rio Grande AAA in 2040, 32.1% are over the age of 60 years.

** Example: Of the total non-Hispanic Whites 60+ in Rio Grande AAA in 2040, 17.0% are 85+. (white 85+ / white 60+)*100 = 17.0%.

Figure 6a. Differences in Sex Distribution Among the Elderly Population in 2000

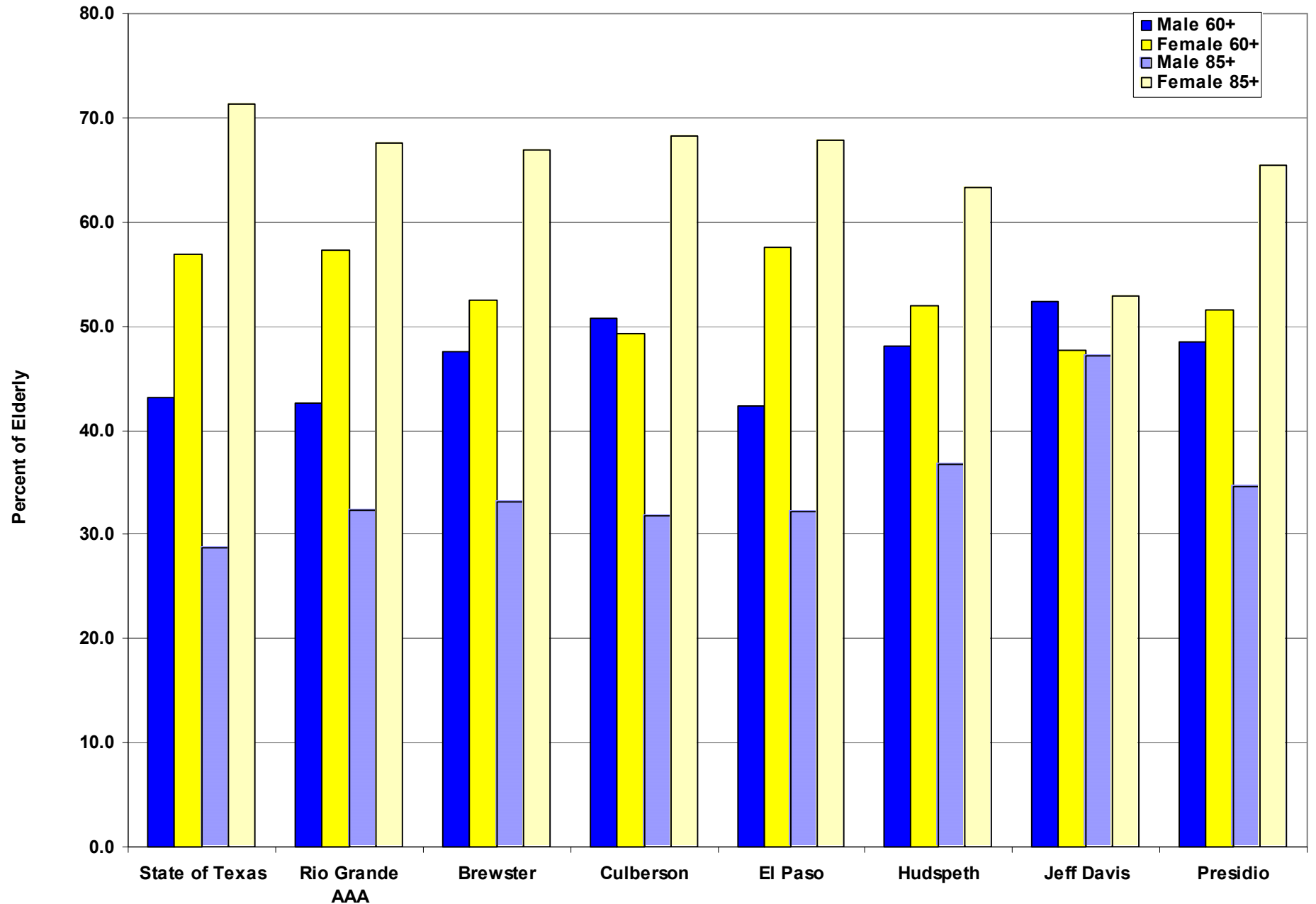
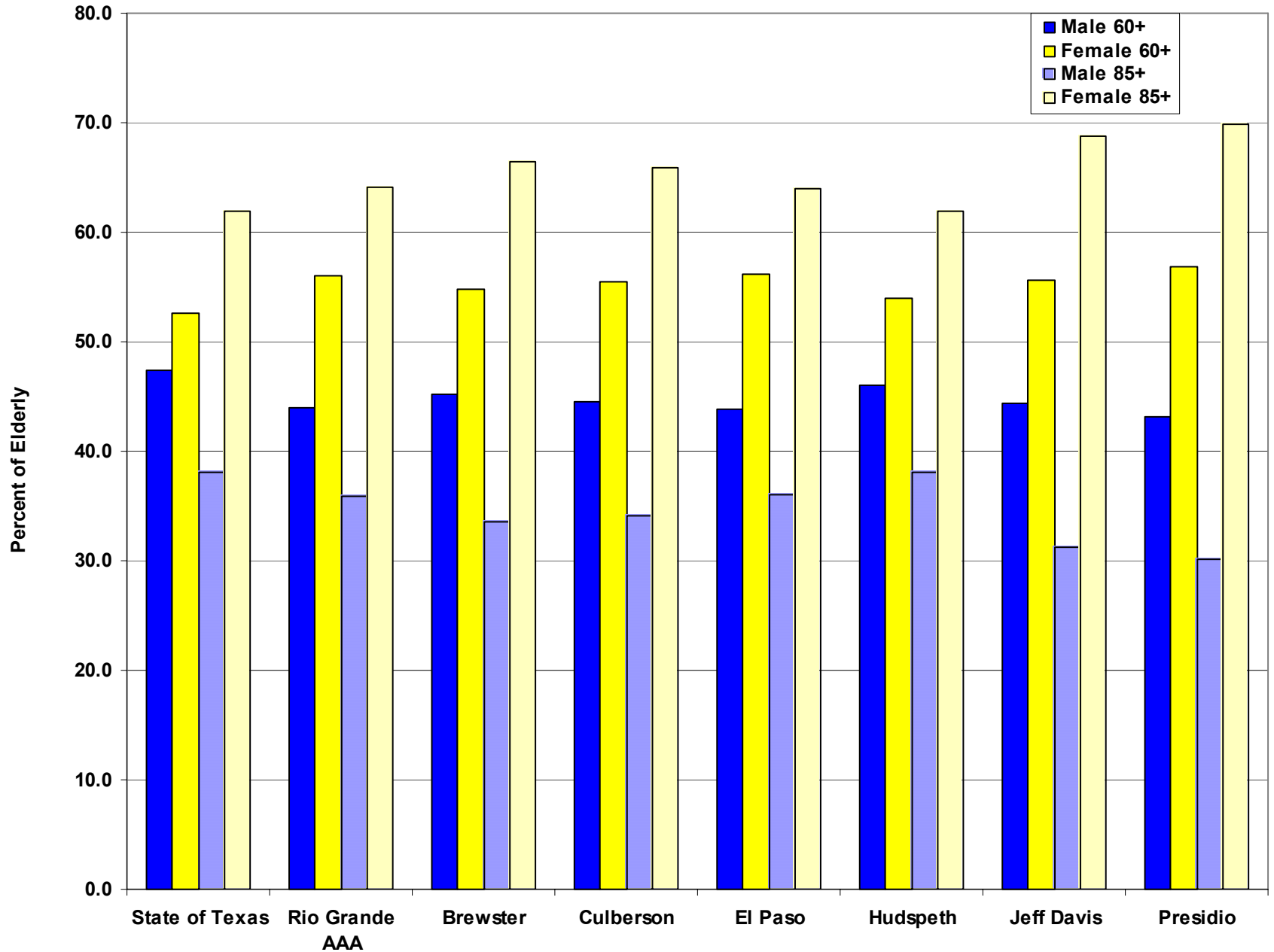


Figure 6c. Differences in Sex Distribution Among the Elderly Population in 2040



Rio Grande AAA

Table 5. Health Care Delivery System

- Number of doctors in Rio Grande AAA
 - Total number of physicians by county
 - Ratio of doctors to population by county
- Number of nurses in Rio Grande AAA
 - Total number of nurses by county
 - Ratio of nurses to population by county
- Number of dentists in Rio Grande AAA
 - Total number of dentists by county
 - Ratio of dentists to population by county
- Number of hospitals and hospital beds in Rio Grande AAA and AAA counties
- Number of nursing homes and number of licensed nursing home beds in Rio Grande AAA and AAA counties

la vida es corta pero ancha

Gracias