

Aging Texas Well

Spirituality **Physical Health** **Mental Health** **Social Engagement**

Housing

Caregiving

Transportation

Employment

Recreation

Legal

Education

Financial

Volunteerism

Protections

Health and Long-term care

Permian Basin AAA

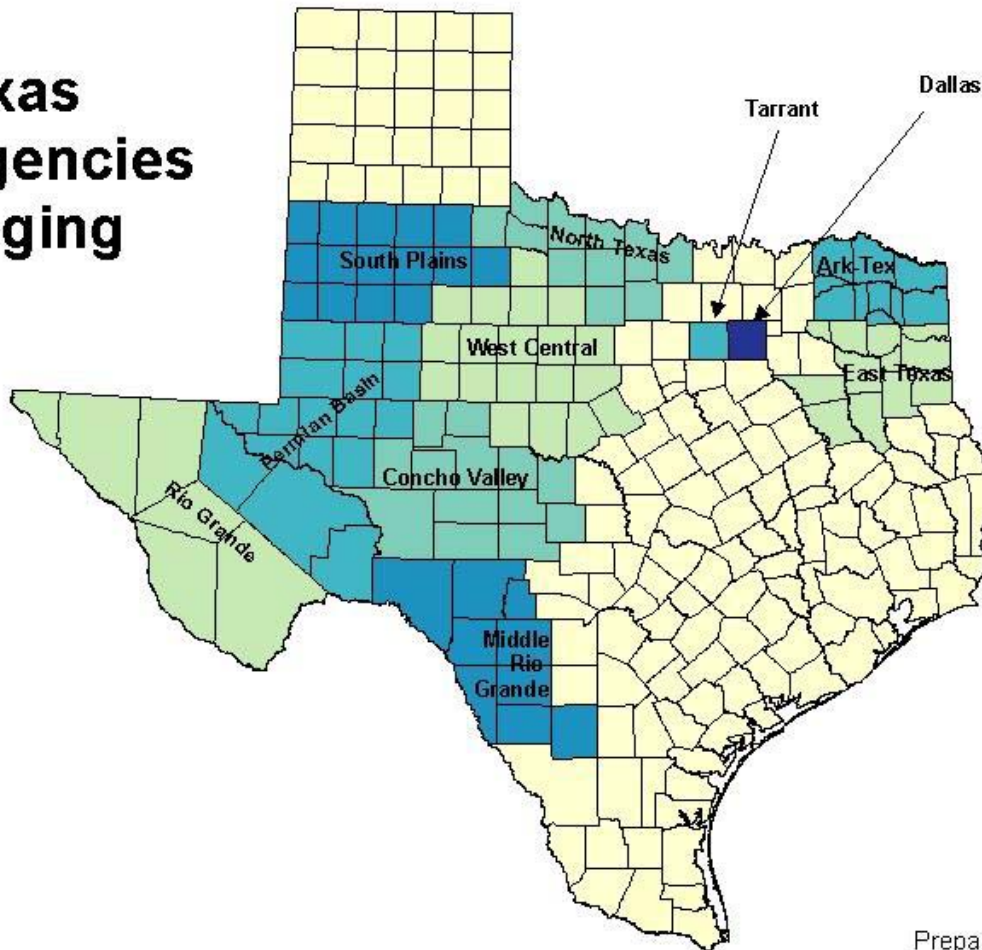
Community Supports

Opportunities for Texans Across the Lifespan

Permian Basin AAA Demographic Profile

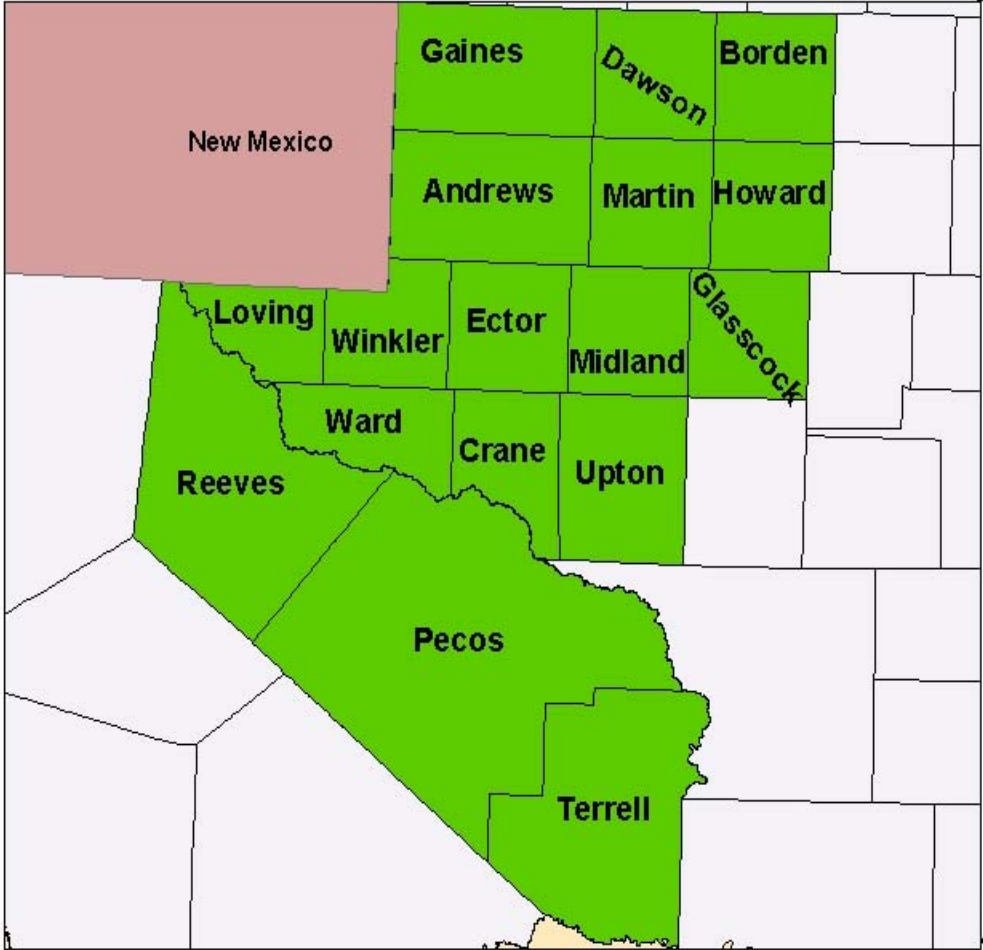
Cruz C. Torres, RN Ph.D.
Department of Rural Sociology
Hispanic Research Program

Texas Area Agencies on Aging



Prepared for Aging Texas Well
Department of Rural Sociology
Texas A&M University
2003

Permian Basin Area Agency on Aging



Socioeconomic Profile: Income

- Per capita income for Permian Basin AAA is \$15,607 vs. \$19,617 for Texas per capita income
 - Reeves County has the lowest per capita income at \$10,811
 - Loving County** has the highest per capita income at \$24,083
- Median household income in the Permian Basin AAA is \$31,007 vs. \$39,927 for Texas
 - Reeves County has the lowest median household income at \$23,306
 - Loving County has the highest median household income at \$40,000

**When making county-level comparisons keep in mind the extremely small population size in Loving County.

Socioeconomic Profile: Poverty

- 17.3% of Permian Basin AAA residents live below poverty vs. 15.4% of Texas residents
 - Reeves County has highest poverty rate: 28.9%
 - Loving County has lowest poverty rate: 0%
- 13.1% of Permian Basin AAA elderly live below poverty vs. 12.8% of Texas elderly
 - Terrell County has highest rate of elderly living below poverty, 31.1%
 - Loving County has the lowest rate of elderly living below poverty, 0%

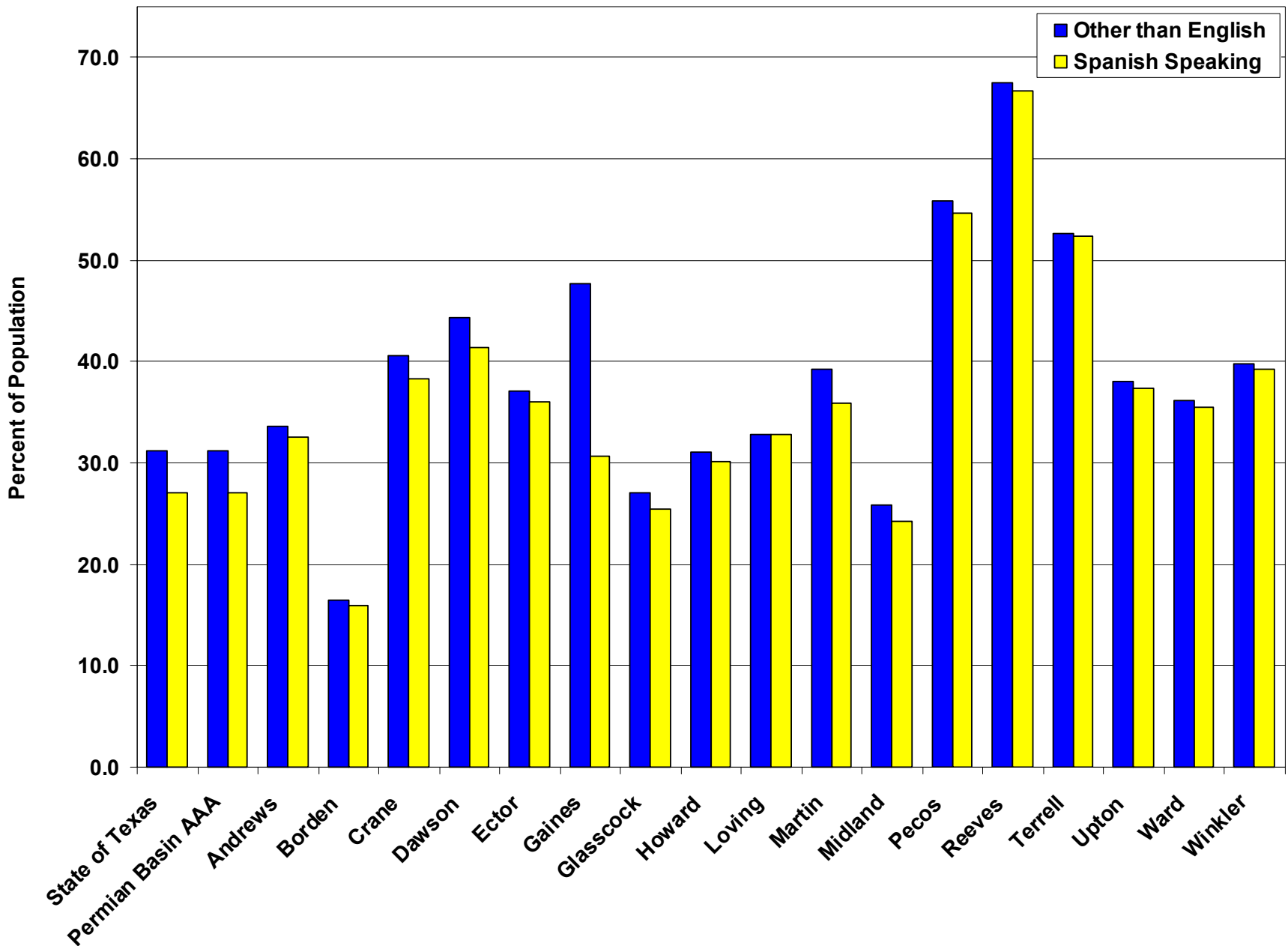
Elderly Household Characteristics

- 22.0% of Permian Basin AAA households include a member that is 65+ vs. 17.7% of Texas households
 - Terrell Co. has highest rate of households with someone 65 years old or older, 32.2%
 - Glasscock Co. has the lowest rate of households with someone 65 years old or older, 16.7%
- 9.5% elderly live alone in Permian Basin AAA compared to 7.3% of Texas elderly
 - Terrell Co. has the highest rate of elderly living alone, 18.4%
 - Glasscock Co. has the lowest rate of elderly living alone, 6.8%
- The percent of elderly with disabilities in Permian Basin AAA is 43.1% vs. 44.8% - the State rate
 - Reeves Co. elderly report the highest disability rate, 53.8%
 - Loving Co. elderly report the lowest disability rate, 30.0%

Language & Education Profile

- 35.6% of Permian Basin AAA residents speak a language other than English vs. 31.2 % of Texas residents
 - Reeves Co. has highest rate, 67.5%
 - Borden Co. has the lowest rate, 16.5%
- 33.7% of Permian Basin AAA residents speak Spanish vs. 27.0% of Texas residents
 - Reeves Co. has highest rate of Spanish speakers, 66.7%
 - Borden Co. has the lowest rate, 15.9%
- High School completion or equivalency in Permian Basin AAA is 70.2% vs. 75.7% for Texas
 - Loving Co. has highest HS completion rate, 86.3%
 - Reeves Co. has lowest rate, 46.6%

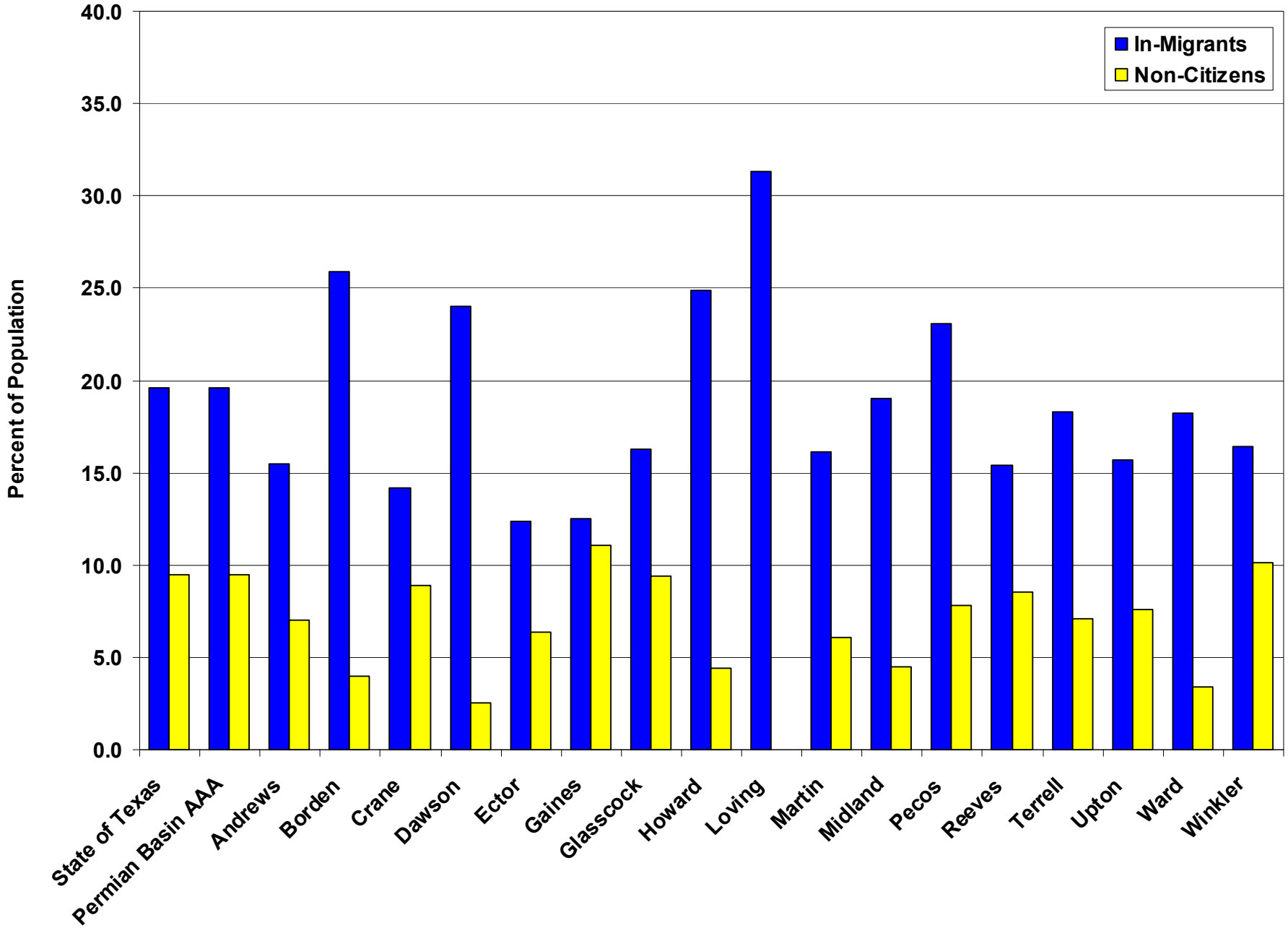
Figure 1: Texas and Permian Basin AAA Language Diversity in 2000



Residency Status of Population

- In-migration rate for the Permian Basin AAA is 17.1% vs. 19.6% for Texas
 - Loving Co. has highest in-migration rate, 31.3%
 - Ector Co. has lowest in-migration rate, 12.4%
- Non-citizen rate for Permian Basin AAA residents is 5.8% vs. 9.5% for Texas
 - Gaines Co. has the highest rate, 11.1%
 - Loving Co. has the lowest rate, 0%

Figure 2. Texas and Permian Basin AAA Resident Characteristics in 2000



Ethnic Diversity

- Permian Basin AAA has a higher percent of non-Hispanic White residents than Texas, 54.4% vs. 53.1%
 - Loving Co. has highest rate of non-Hispanic Whites, 89.6%
 - Reeves Co. has lowest rate of non-Hispanic Whites, 24.0%
- 39.6% of Permian Basin AAA residents are Hispanic vs. 32% of Texas residents
 - Reeves Co. has highest rate of Hispanics, 73.4%
 - Loving Co. has lowest rate of Hispanics, 10.5%
- 5.0% of Permian Basin residents are African American vs. 11.6% of Texas residents
 - Dawson Co. has highest rate of African Americans, 8.7%
 - Loving & Terrell Co. have lowest rate of African Americans, 0%
- Figures 3a, 3b, 3c illustrate the projected decrease in non-Hispanic Whites and the corresponding increase in Hispanics

Figure 3a. Texas and Permian Basin AAA Ethnic Diversity in 2000

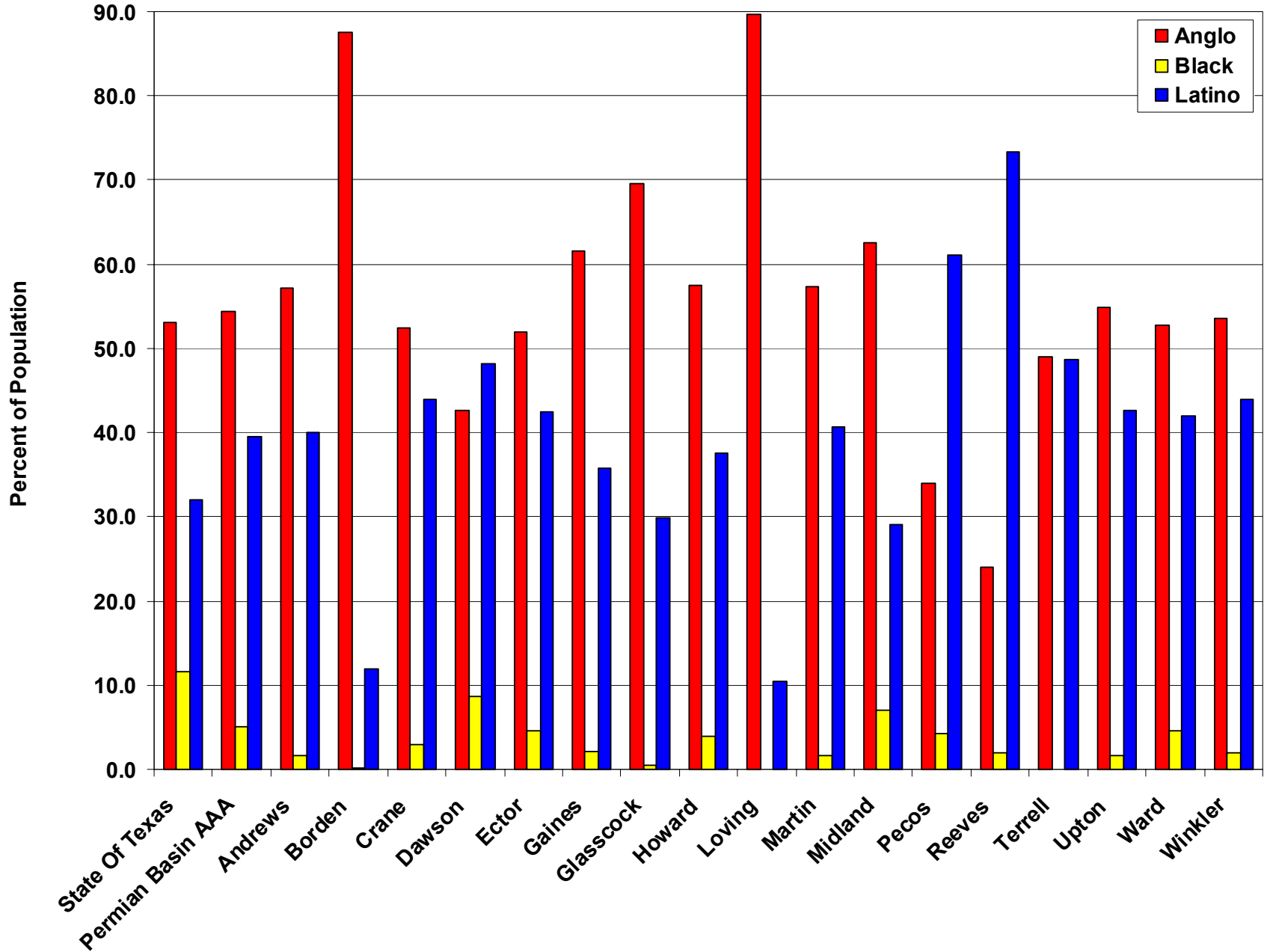
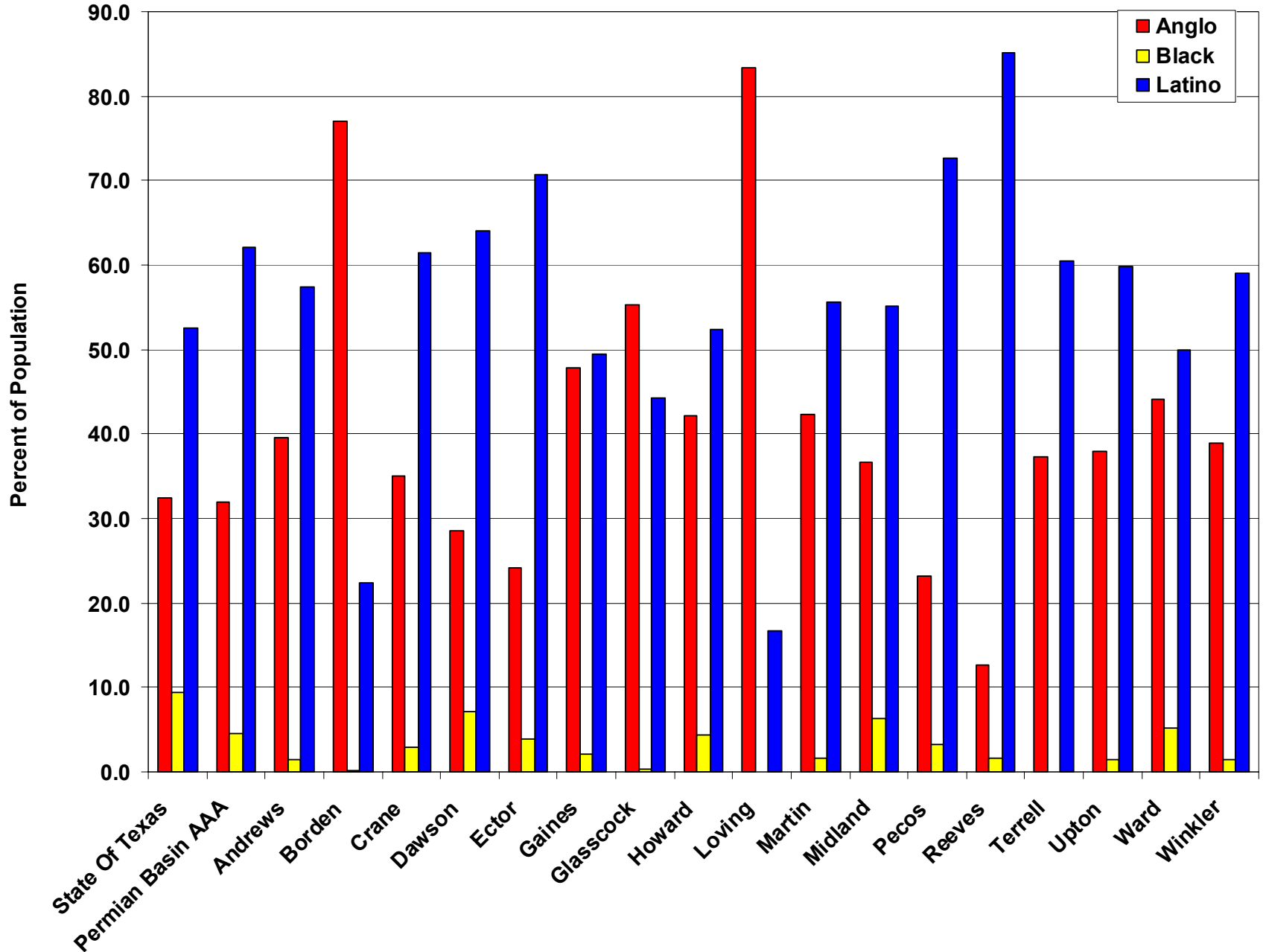


Figure 3c. Texas and Permian Basin AAA Ethnic Diversity in 2040



Current & Projected Elderly Population

- Figure 4 illustrates current and projected elderly percent of population
- Figures 5a, 5b, 5c illustrate the ethnic shift that will occur in the elderly population by 2040
- Figures 5d, 5e, 5f illustrate the increase of elderly within each ethnic population
- Figures 6a, 6b, 6c illustrate the current and projected sex ratio among the elderly
- Figures 7a, 7b, 7c (in your packet) illustrate the current and projected proportion of the population that will be elderly for each ethnic group by 2040

Figure 4. Current and Projected Percent of Population that will be Elderly

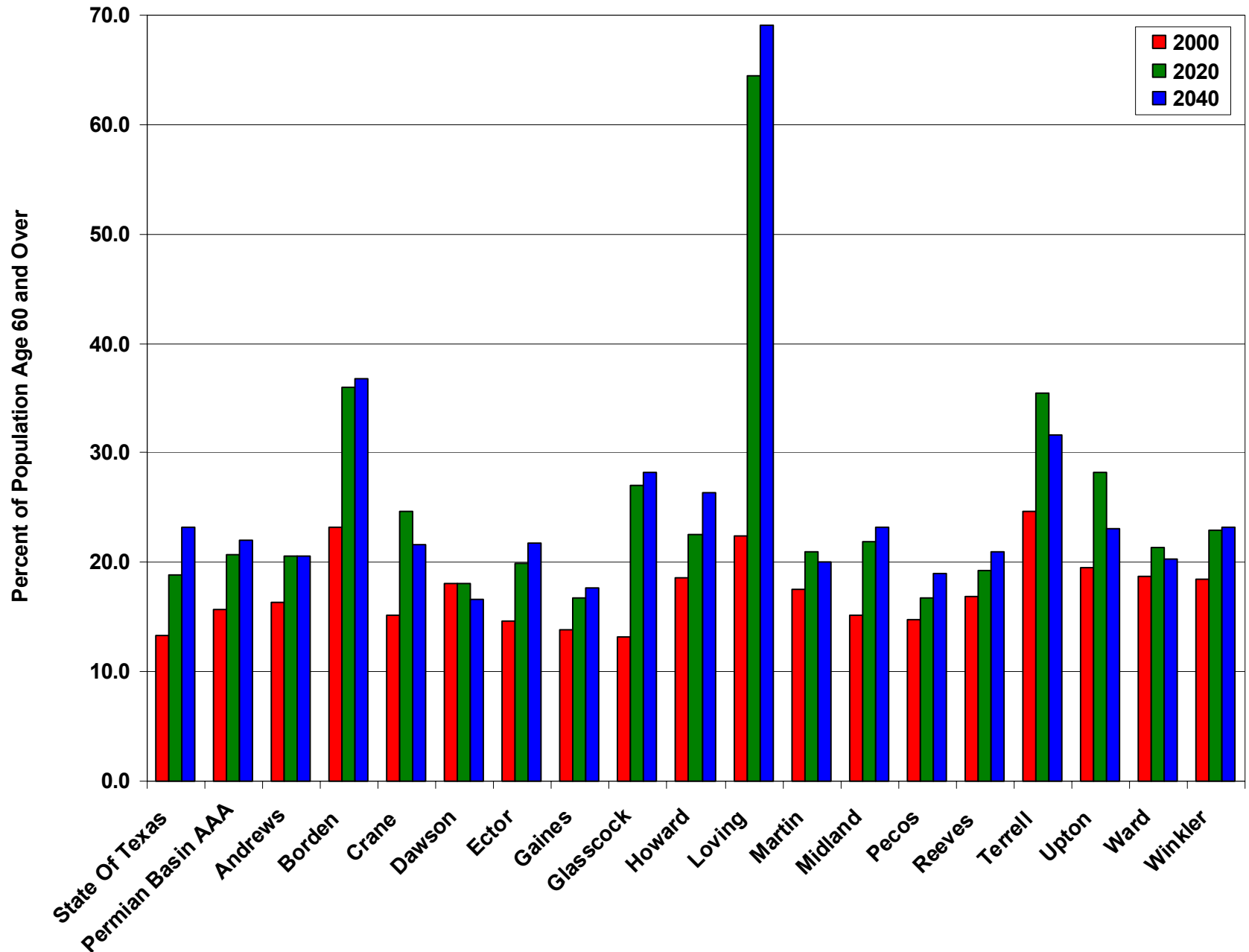
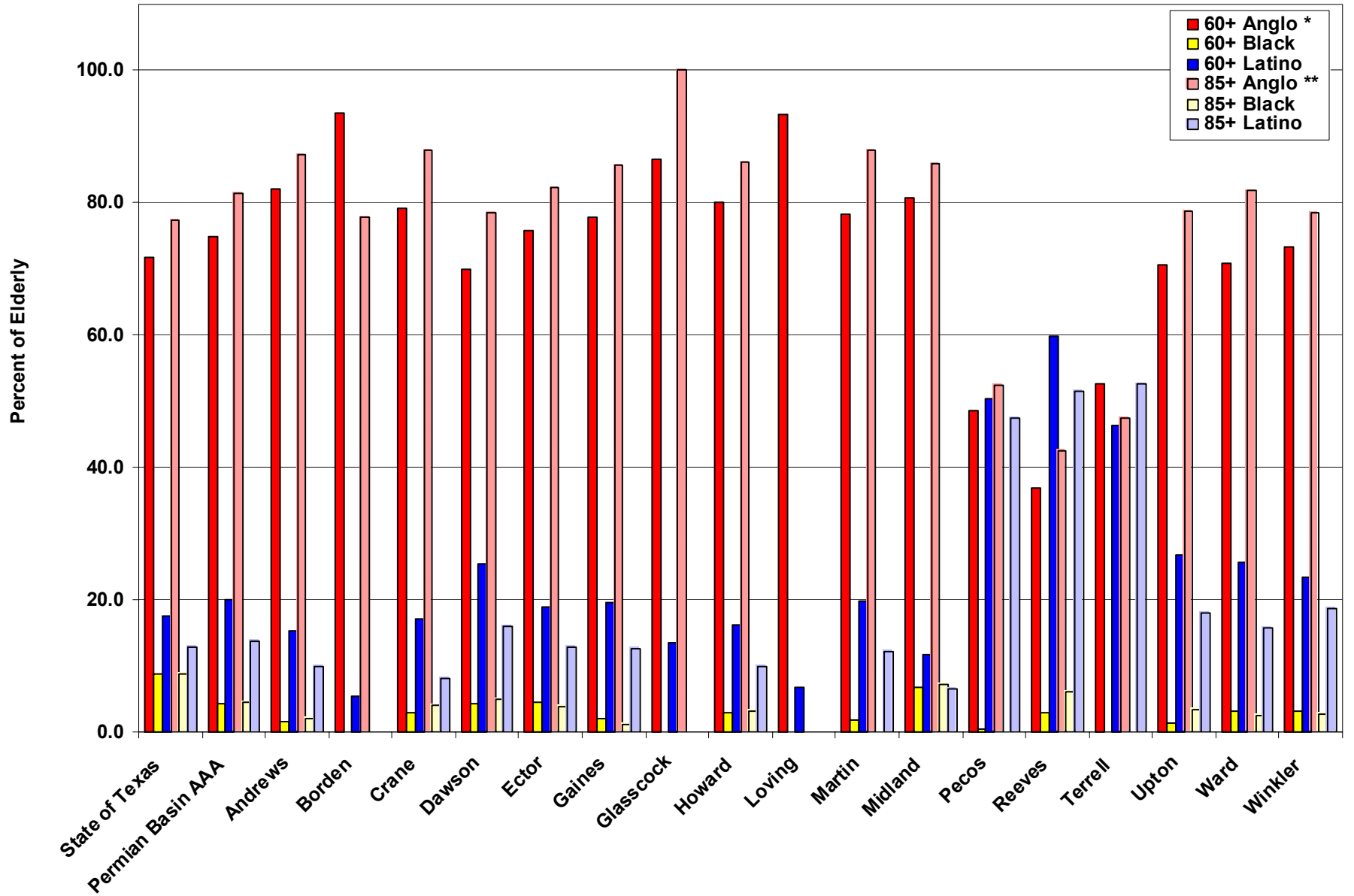


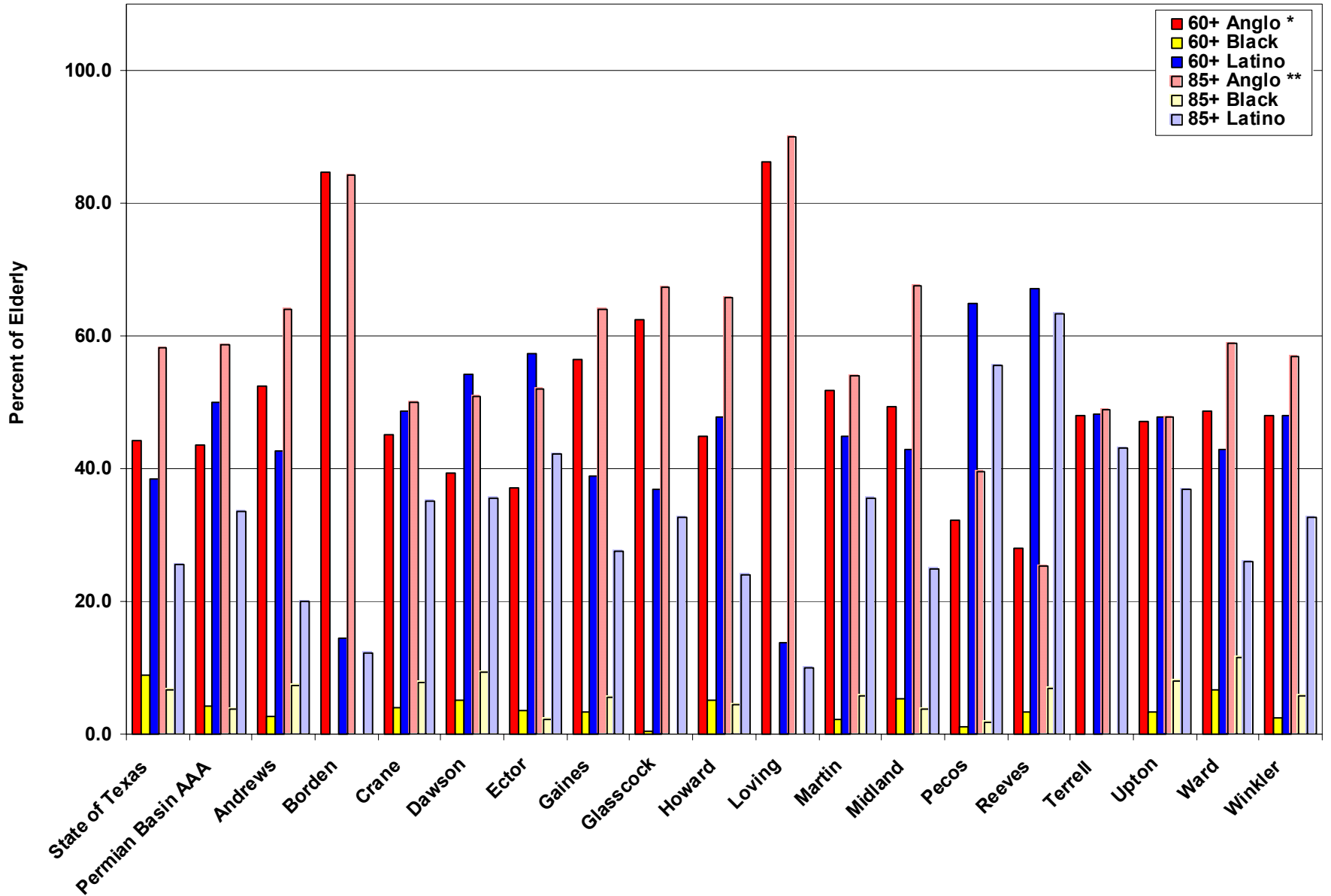
Figure 5a. Percent of the Elderly by Ethnic Group and Age Group in 2000



* Example: Of the total elderly (60+) in Permian Basin AAA in 2000, 75.0% are non-Hispanic White. $(\text{white elderly} / \text{total elderly}) * 100 = 75.0\%$

** Example: Of all residents over 85 years in Permian Basin AAA in 2000, 81.3% are non-Hispanic White. $(\text{white 85+} / \text{total 85+}) * 100 = 81.3\%$

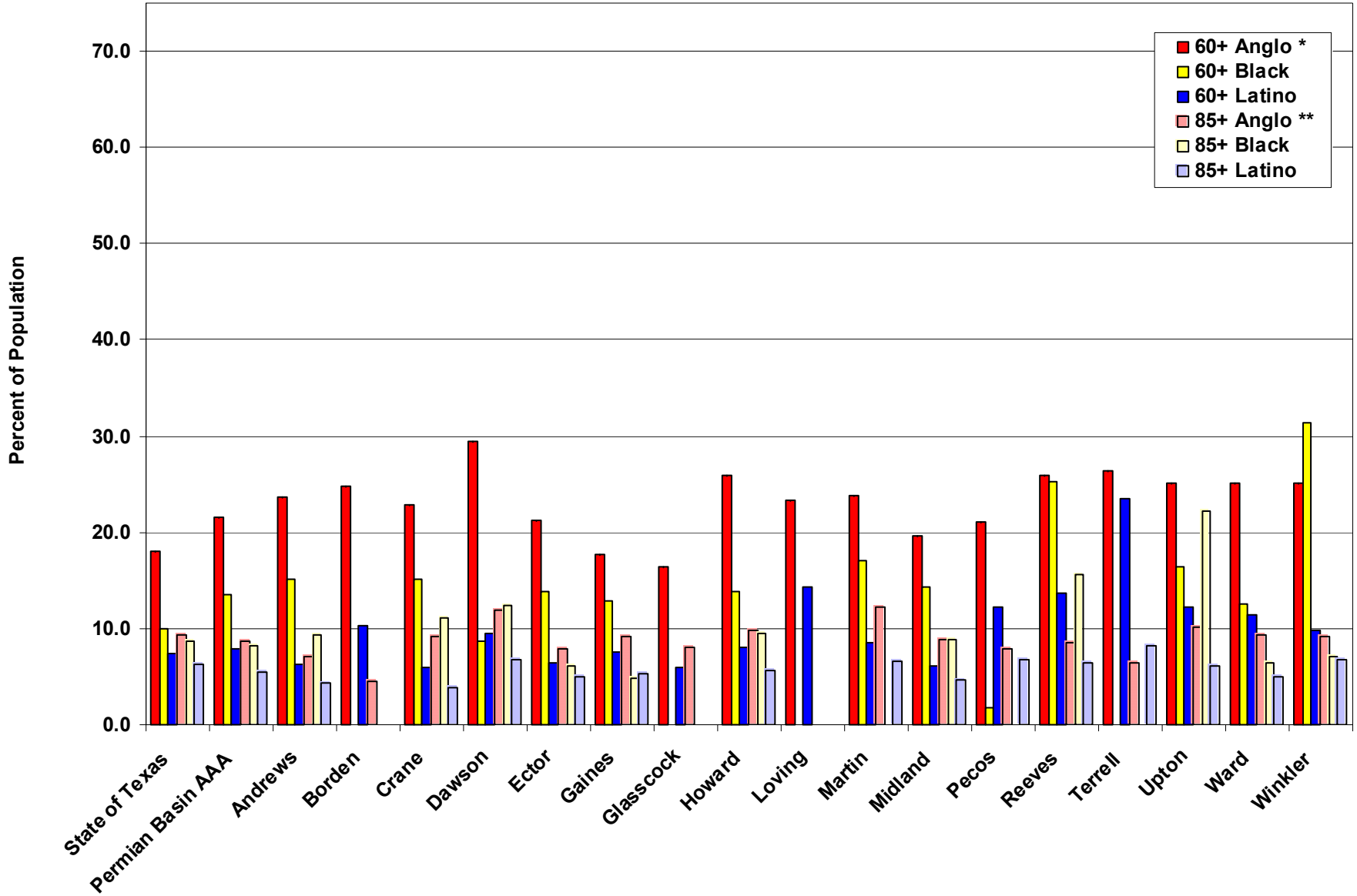
Figure 5c. Percent of the Elderly by Ethnic Group and Age Group in 2040



* Example: Of the total elderly (60+) in Permian Basin AAA in 2040, 43.6% are non-Hispanic White. $(\text{white elderly} / \text{total elderly}) * 100 = 43.6\%$

** Example: Of all residents over 85 years in Permian Basin AAA in 2040, 58.6% are non-Hispanic White. $(\text{white 85+} / \text{total 85+}) * 100 = 58.6\%$

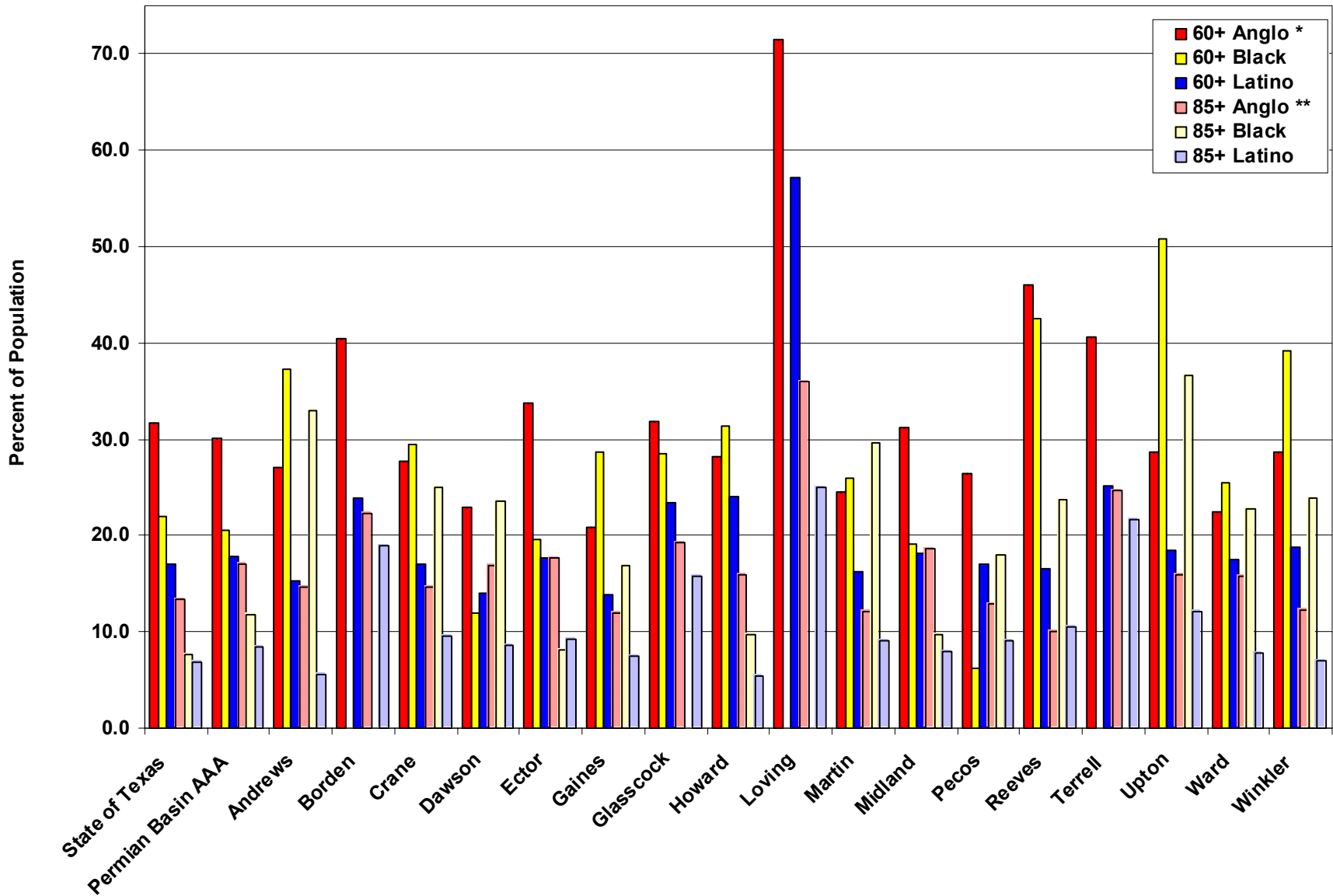
Figure 5d. Percent of the Population within each Ethnic Group that are 60+ and Percent of those 60+ that are 85 and Older in 2000



* Example: Of the total non-Hispanic Whites living in Permian Basin AAA in 2000, 21.6% are over the age of 60 years.

** Example: Of the total non-Hispanic Whites 60+ in Permian Basin AAA in 2000, 8.8% are 85+. (white 85+ / white 60+)*100 = 8.8%.

Figure 5f. Projected Percent of the Population within each Ethnic Group that are 60+ and Percent of those 60+ that are 85 and Older in 2040



* Example: Of the total non-Hispanic Whites living in Permian Basin AAA in 2040, 30.1% are over the age of 60 years.

** Example: Of the total non-Hispanic Whites 60+ in Permian Basin AAA in 2040, 17.0% are 85+. (white 85+ / white 60+)*100 = 17.0%.

Figure 6a. Differences in Sex Distribution Among the Elderly Population in 2000

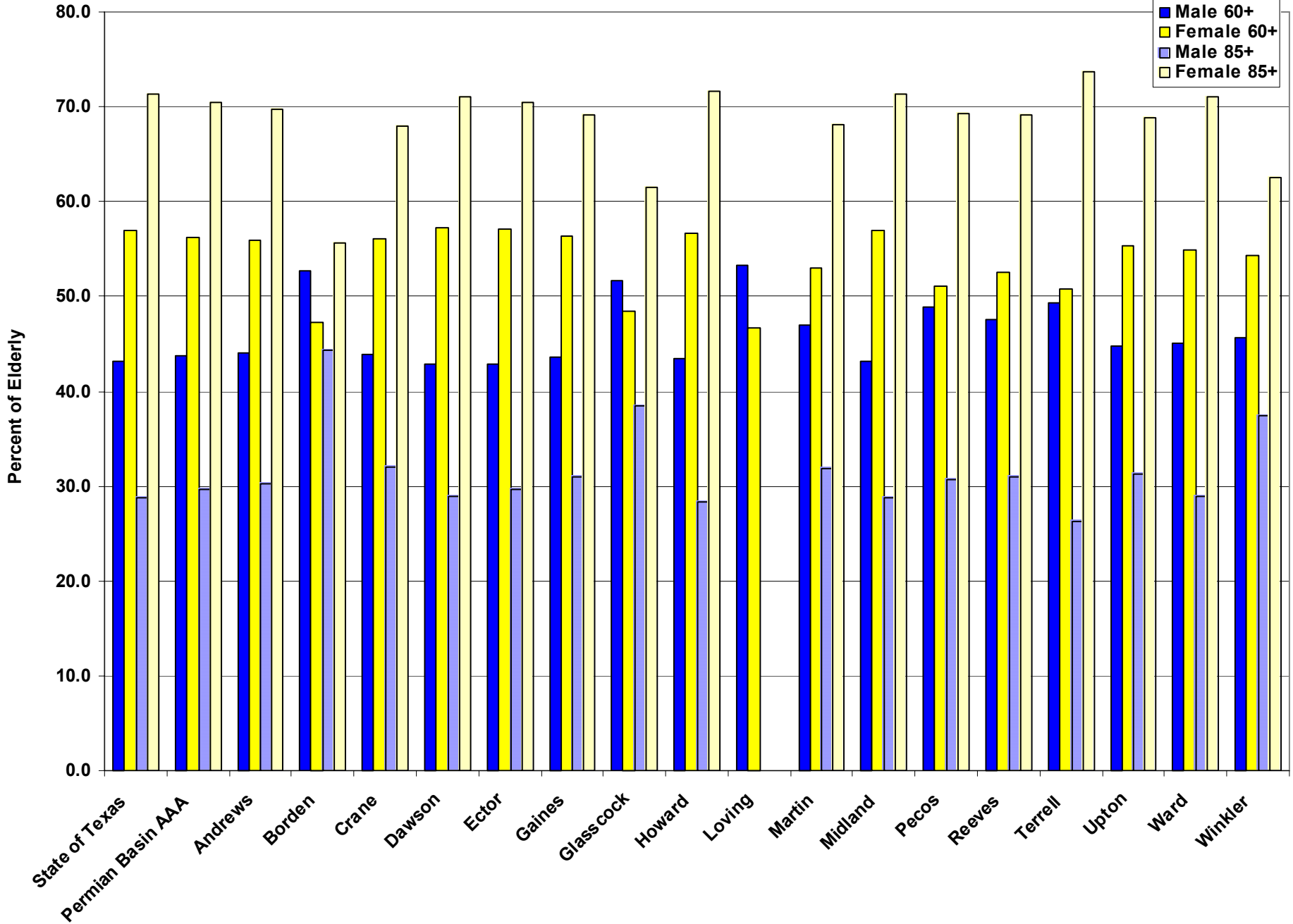
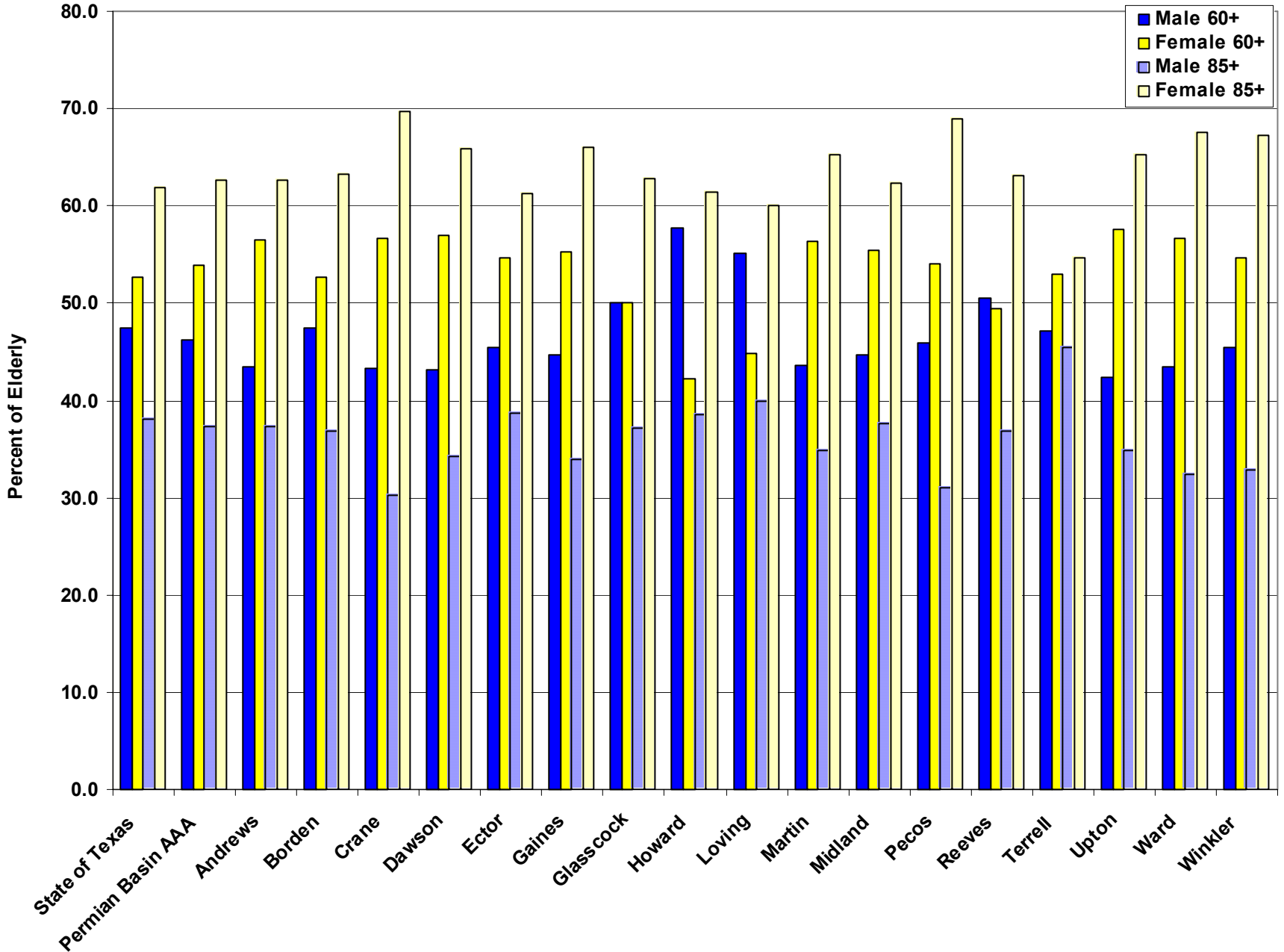


Figure 6c. Differences in Sex Distribution Among the Elderly Population in 2040



Permian Basin AAA

Table 5. Health Care Delivery System

- Number of doctors in Permian Basin AAA
 - Total number of physicians by county
 - Ratio of doctors to population by county
- Number of nurses in Permian Basin AAA
 - Total number of nurses by county
 - Ratio of nurses to population by county
- Number of dentists in Permian Basin AAA
 - Total number of dentists by county
 - Ratio of dentists to population by county
- Number of hospitals and hospital beds in Permian Basin AAA and AAA counties
- Number of nursing homes and number of licensed nursing home beds in Permian Basin AAA and AAA counties

la vida es corta pero ancha

Gracias