

# **Workplace Planning: The New Texas Challenge**

by  
**Cruz C. Torres**

---

**Rural Sociology and Community Studies  
Texas A&M University**

**October 13, 2004**

# Major Demographic Trends Affecting the Future

- **Change in Rates and Sources of Population Growth**
- **Increase in the Non-Anglo Population**
- **Aging of the Population**
- **Change in Household Composition**

# Total Population Change



## Total Population and Percent Population Change in Texas and the United States, 1850-2003

Year*	Total Population		Percent Change	
	Texas	U.S.	Texas	U.S.
1850	212,592	23,191,876	---	---
1860	604,215	31,443,321	184.2	35.6
1870	818,579	39,818,449	35.5	26.6
1880	1,591,749	50,155,783	94.5	26.0
1890	2,235,527	62,947,714	40.4	25.5
1900	3,048,710	75,994,575	36.4	20.7
1910	3,896,542	91,972,266	27.8	21.0
1920	4,663,228	105,710,620	19.7	14.9
1930	5,824,715	122,775,046	24.9	16.1
1940	6,414,824	131,669,275	10.1	7.2
1950	7,711,194	150,697,361	20.2	14.5
1960	9,579,677	179,323,175	24.2	19.0
1970	11,196,730	203,302,031	16.9	13.4
1980	14,229,191	226,545,805	27.1	11.4
1990	16,986,510	248,709,873	19.4	9.8
2000	20,851,820	281,421,906	22.8	13.2
2002	21,779,893	288,368,698	4.5	2.5
2003	22,118,509	290,809,777	6.1	3.3

\* All values for the decennial dates are for the indicated census year. Values for 2003 are as estimated by the U.S. Bureau of the Census.

---

# Total Population and Components of Population Change in Texas, 1950-2003

Year*	Population	Numerical Change	Natural Increase	Net Migration	Percent Change	Percent Change Due to	
						Natural Increase	Net Migration
1950	7,711,194	—	—	—	—	—	—
1960	9,579,677	1,868,483	1,754,652	113,831	24.23	93.91	6.09
1970	11,196,730	1,617,053	1,402,683	214,370	16.88	86.74	13.26
1980	14,229,191	3,032,461	1,260,794	1,771,667	27.08	41.58	58.42
1990	16,986,510	2,757,319	1,815,670	941,649	19.38	65.85	34.15
2000	20,851,820	3,865,310	1,919,281	1,946,029	22.76	49.65	50.35
2003	22,118,509	1,266,689	715,464	551,225	6.07	56.48	43.52

\* All values for the decennial dates are for the indicated census year. Value for 2003 is as estimated by the U.S. Bureau of the Census.

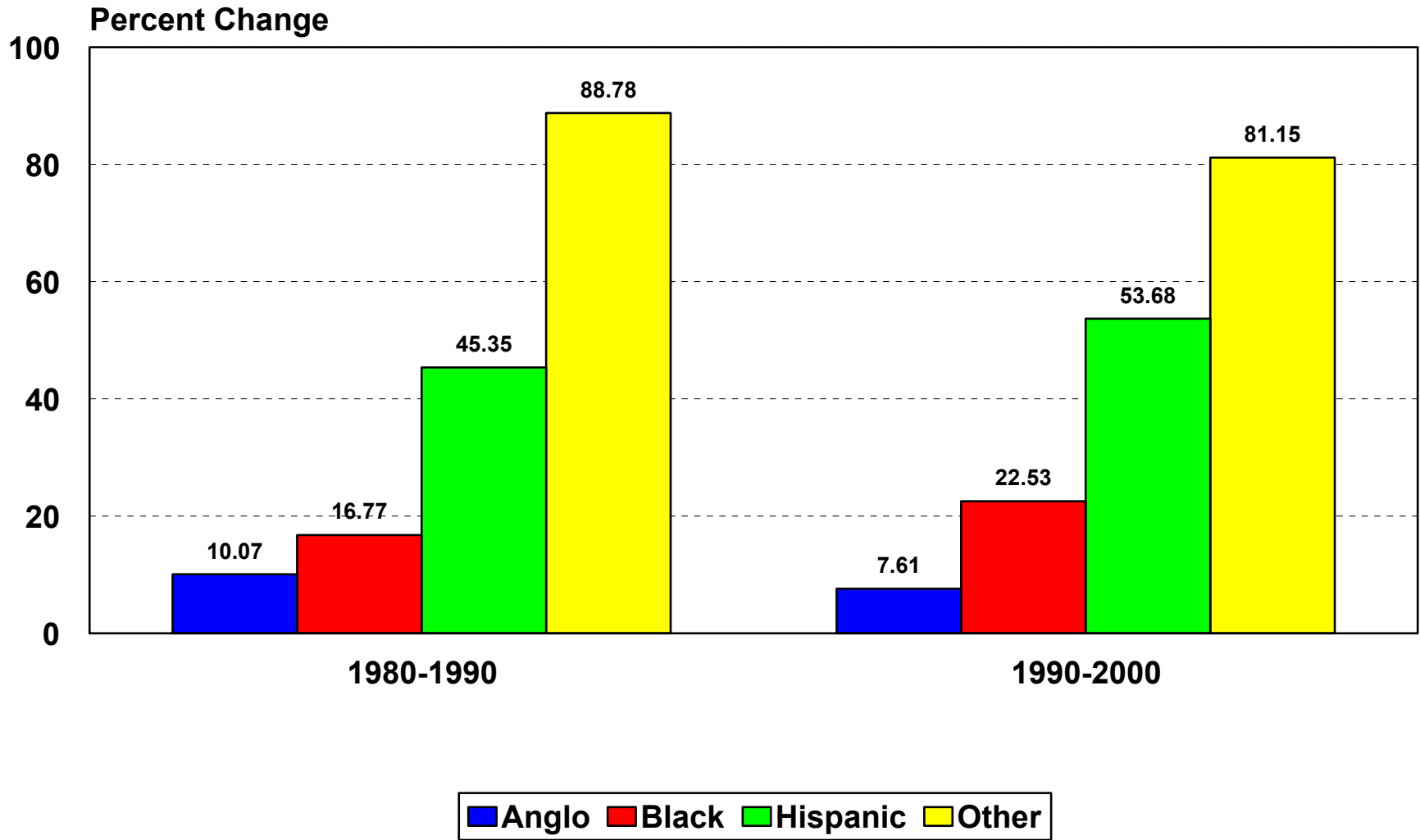
# Demographic Shifts

- **Areas experiencing highest rate change ( $\geq 40\%$ )**
  - Capital Area COG
  - Lower Rio Grande Valley COG
  - South Texas COG
- **Population increase greatest in:**
  - Metropolitan Suburbs (45%)
  - Metropolitan Central City (20.5%)
- **Population increase lowest in:**
  - Non- Metropolitan Nonadjacent (7.9%)

# **Racial/Ethnic Change in Texas**

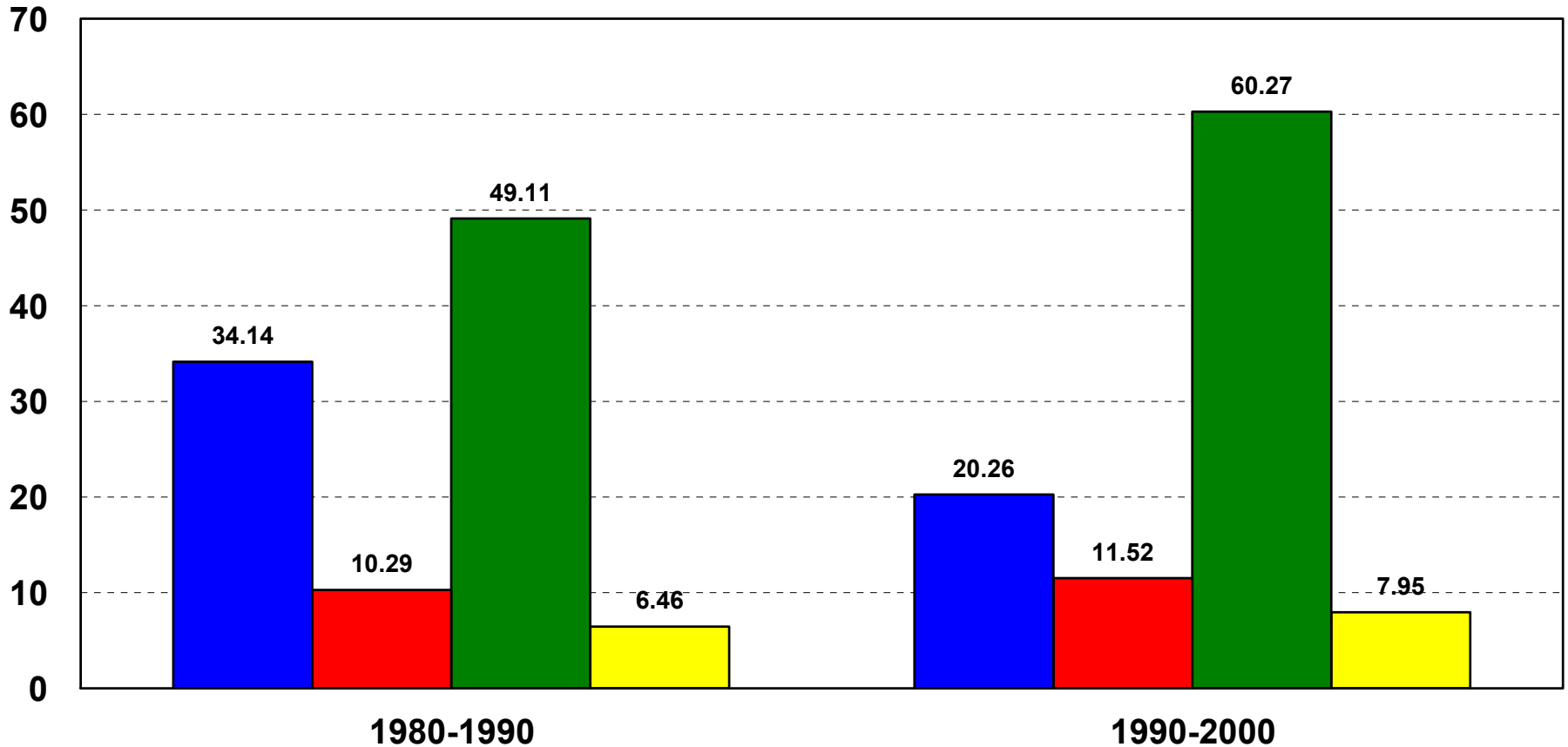
The slide features a light green background on the left side. A white rounded rectangle is positioned in the upper left, containing the title text. A dark blue horizontal bar with rounded ends is located in the lower right quadrant of the slide.

# Percent Change in Population by Race/Ethnicity for 1980-1990 and 1990-2000 in Texas



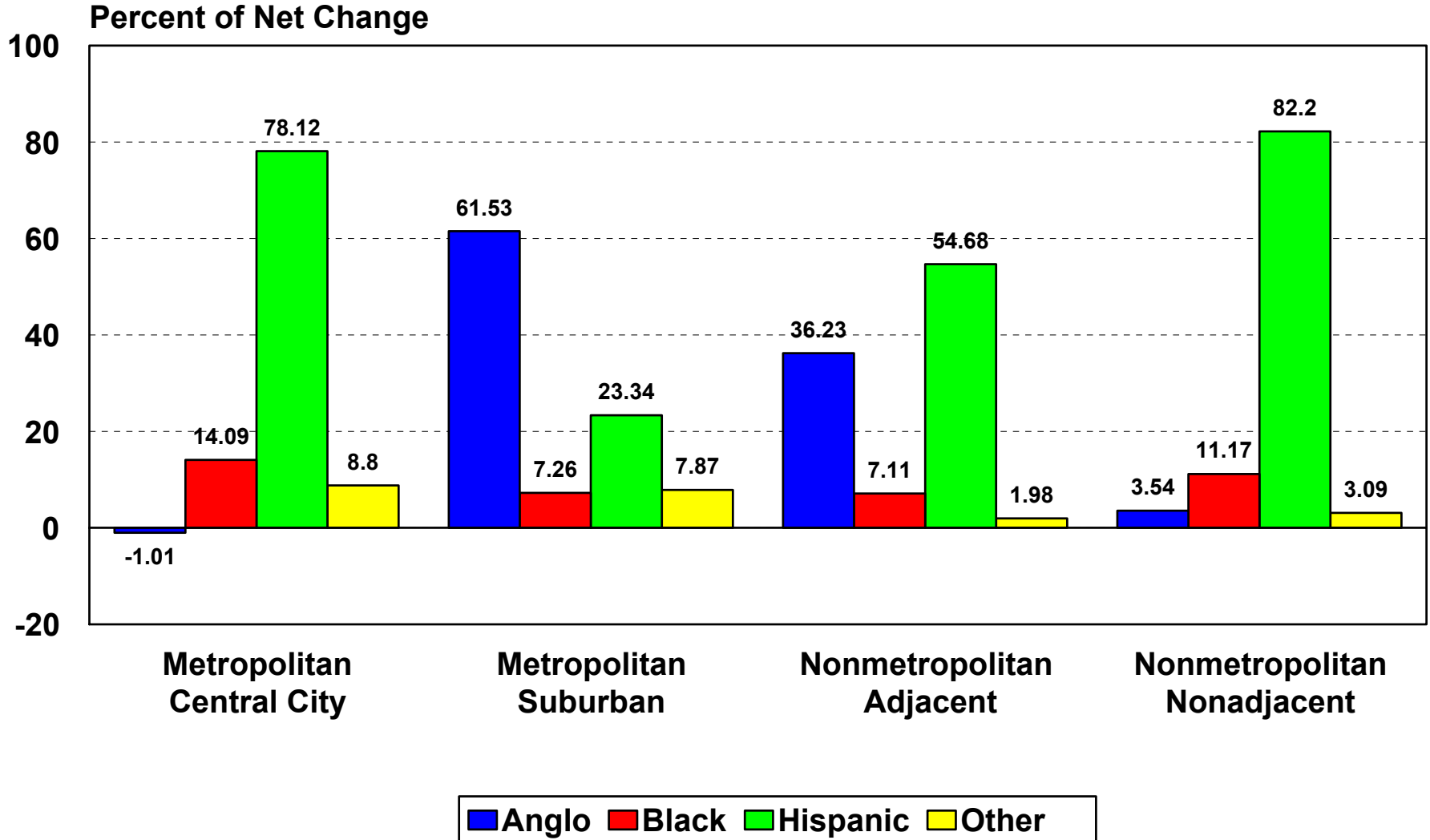


# Proportion of Net Population Change Attributable to Each Race/Ethnicity Group in Texas for 1980-1990 and 1990-2000

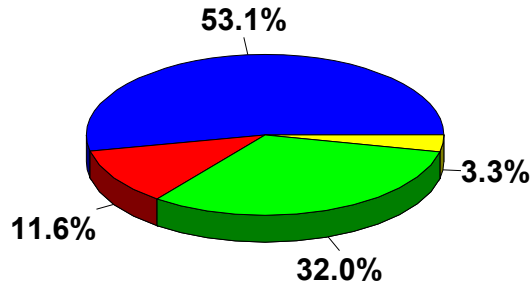


■ Anglo ■ Black ■ Hispanic ■ Other

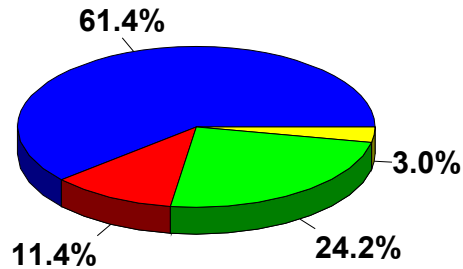
# Proportion of Net Population Change from 1990 to 2000 Attributable to Each Racial/Ethnic Group by Each Metropolitan Status Type in Texas



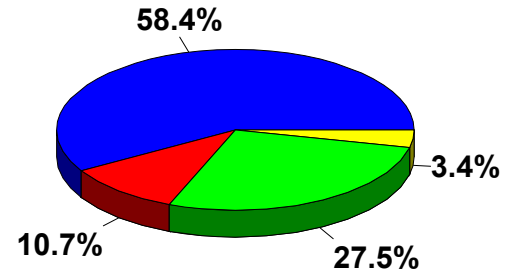
# Ethnic Diversity of the Population, Householders, and Labor Force in Texas, 2000 and 2040\*



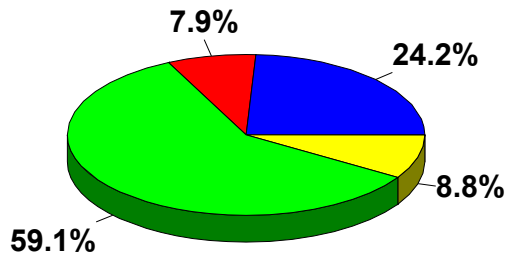
2000 Population



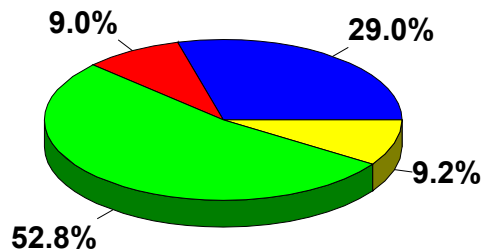
2000 Householders



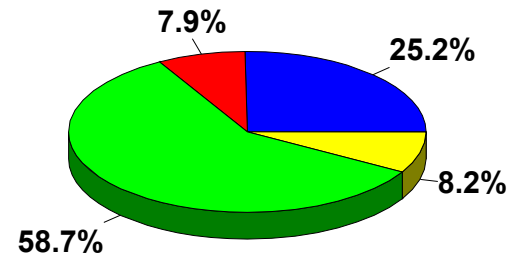
2000 Civilian Labor Force



2040 Population



2040 Householders



2040 Civilian Labor Force



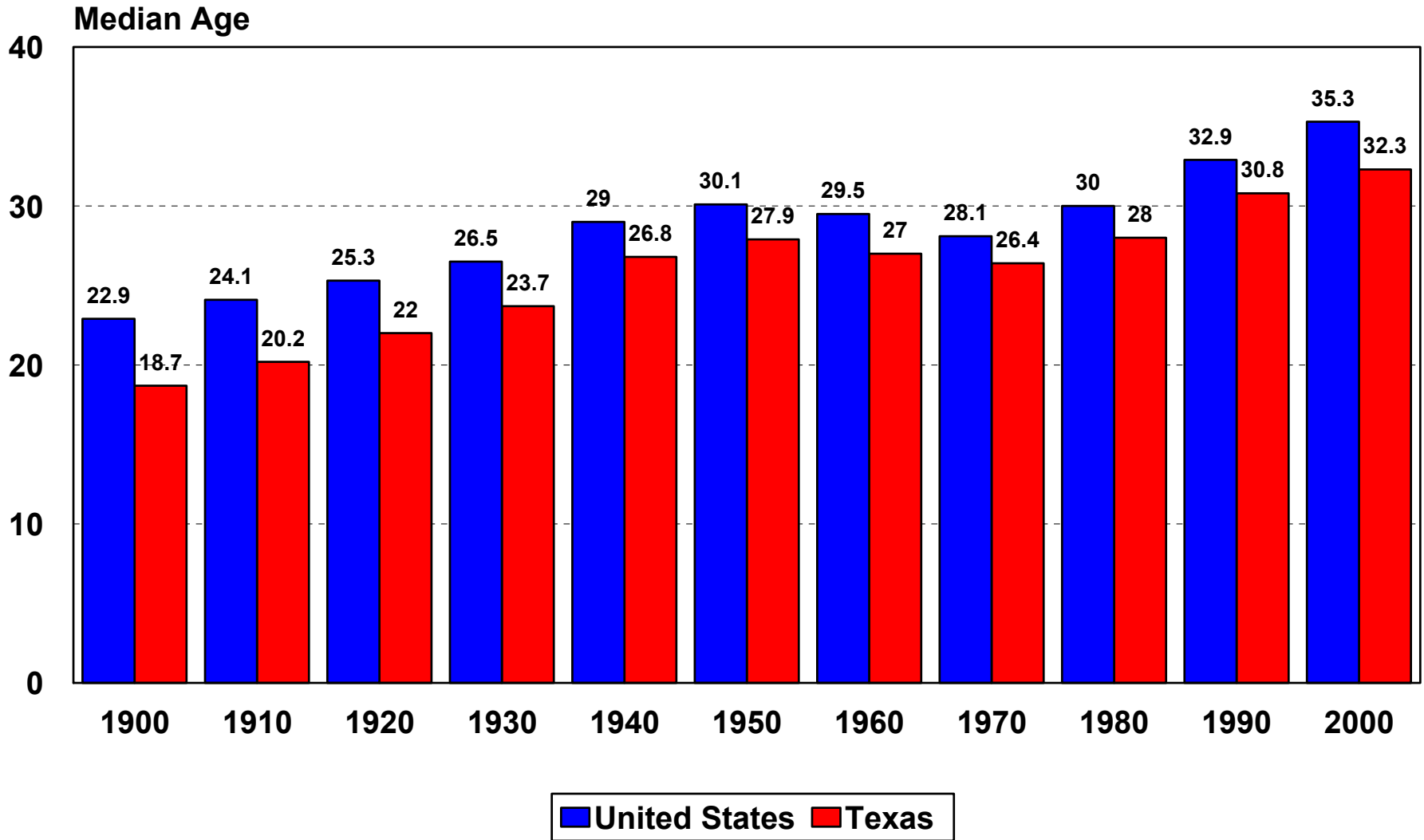
\* Projections are shown for the 1.0 scenario

# **Major Changes in Population:**

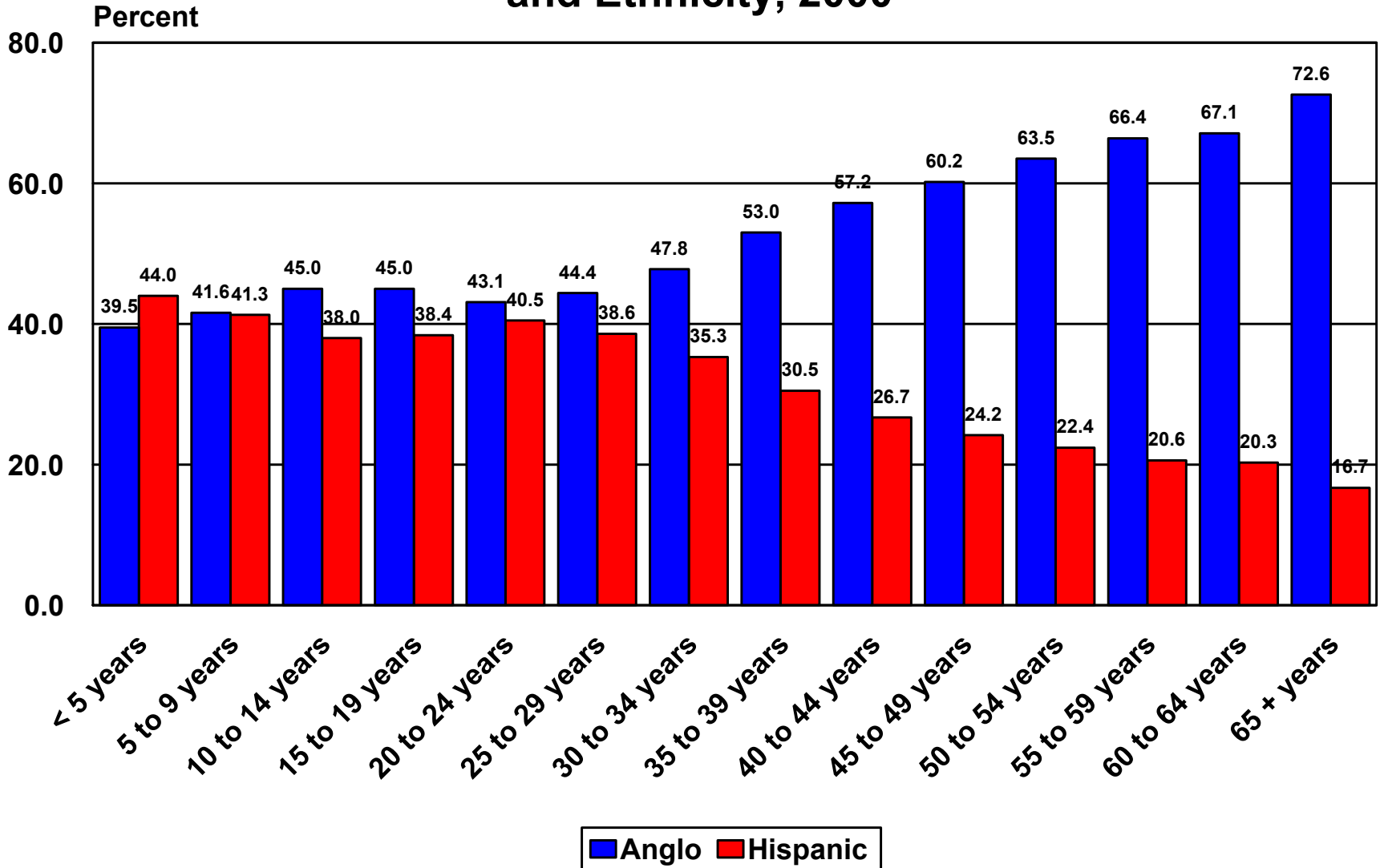
## **Age Composition**

---

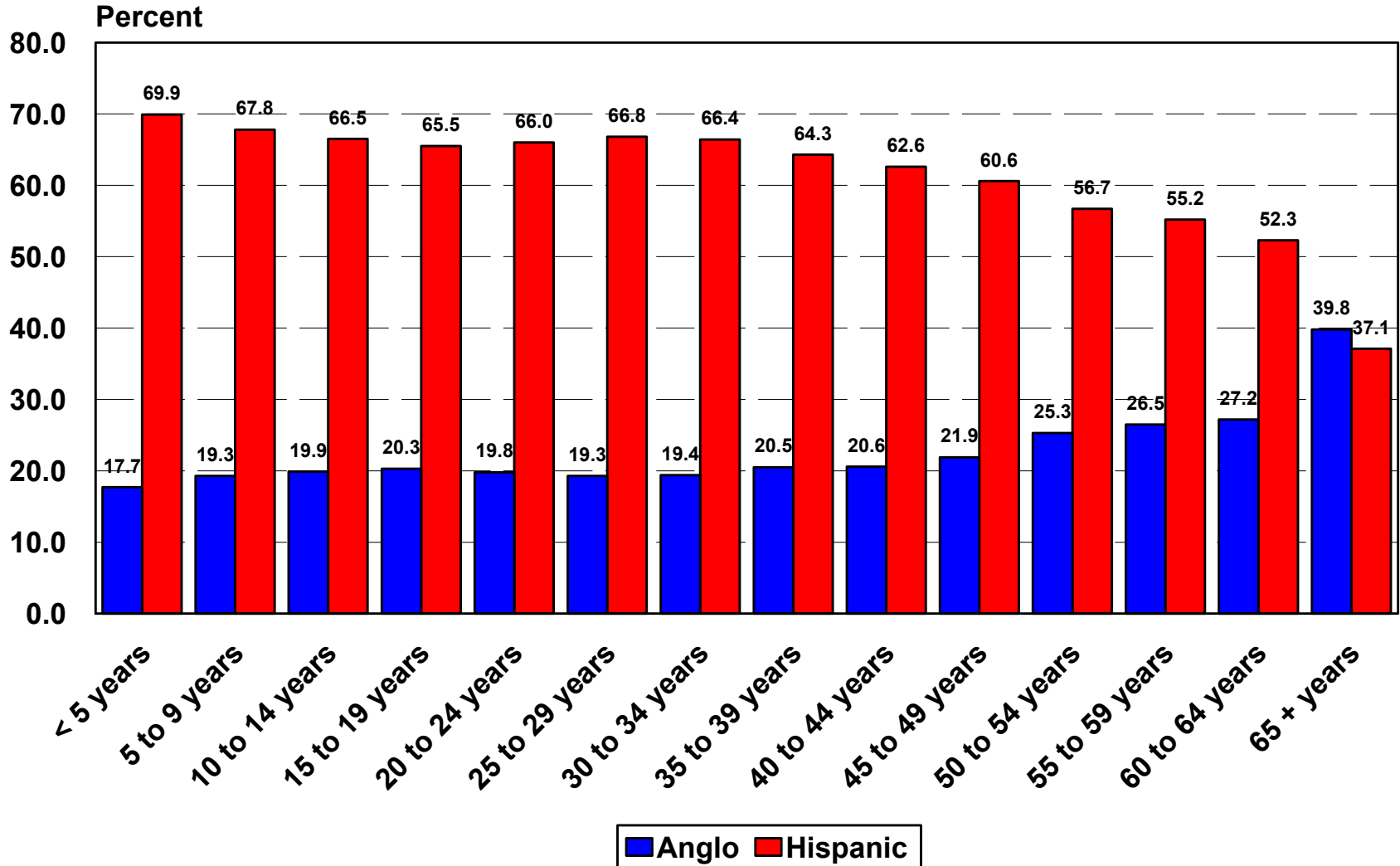
# Median Age in the United States and Texas, 1900-2000



# Percent of Texas Population by Age Group and Ethnicity, 2000



# Percent of Texas Population by Age Group and Ethnicity, 2040\*



\* Projections are shown for the 1.0 scenario

# **Major Changes in Population:**

**Household and Family  
Composition**

---



# Household and Family Composition

- **Decrease in family size**
  - From 3.41 in 1950 to 2.74 in 2000
- **1990-2000 change in type of households**
  - Family households 20.8% increase
  - Nonfamily households 24.2% increase
- **1990-2000 change in family households**
  - Married couples 16.1% increase
  - Male householder 55.2% increase
  - Female householder 33.6% increase
  - Unmarried partners 87.5% increase

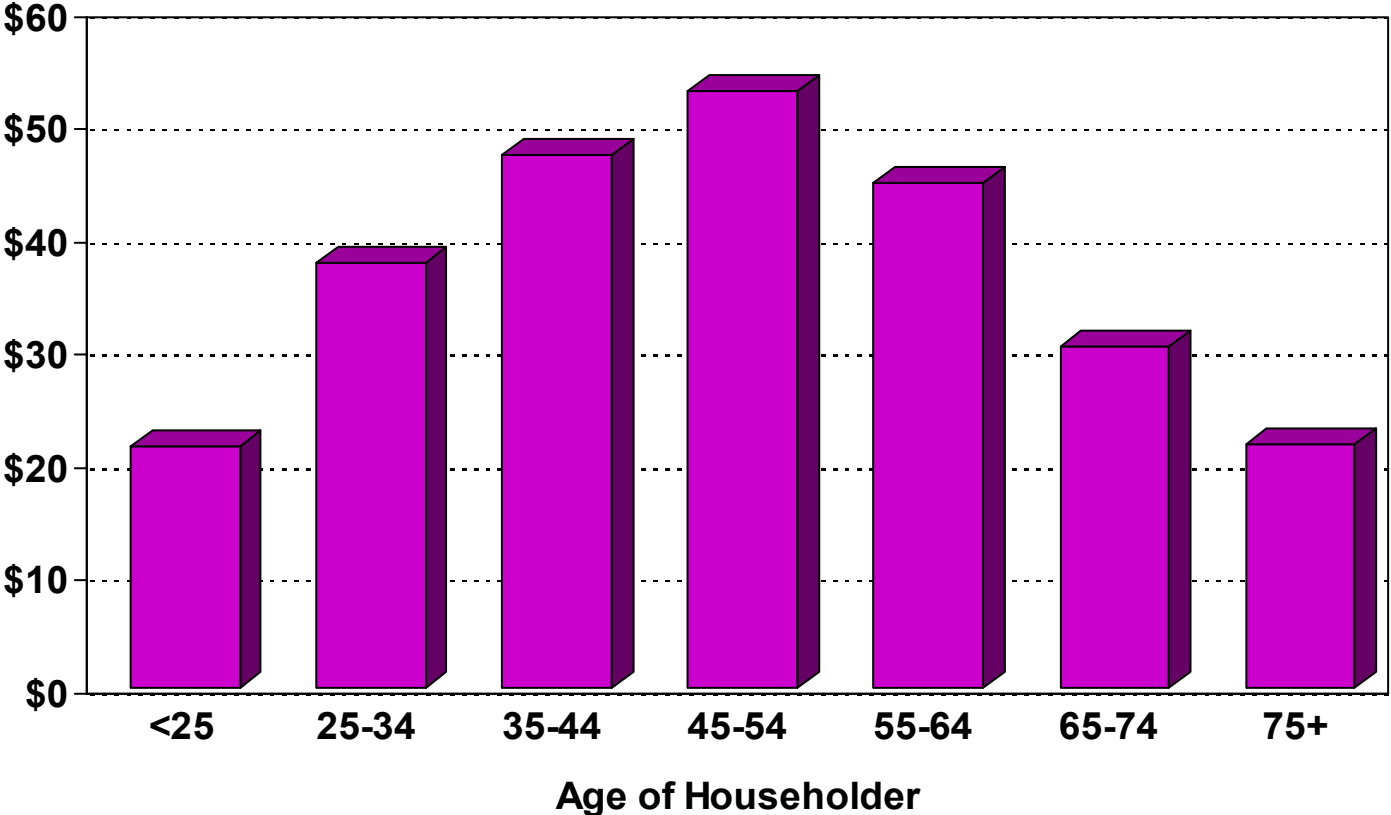
**POPULATION CONDITIONS:**

**SOCIOECONOMIC**

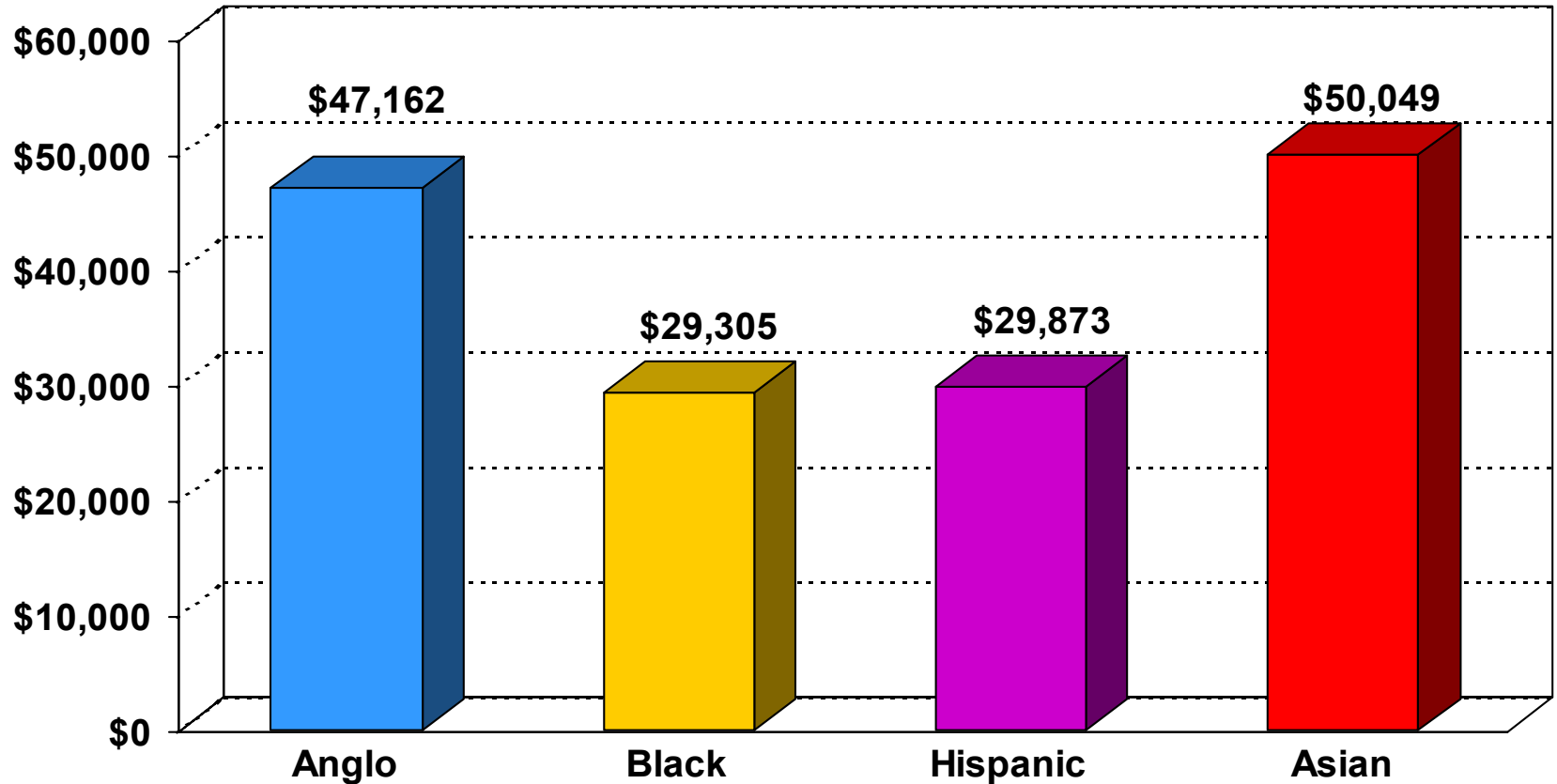


# Median Household Income in 1999 in Texas by Age of Householder

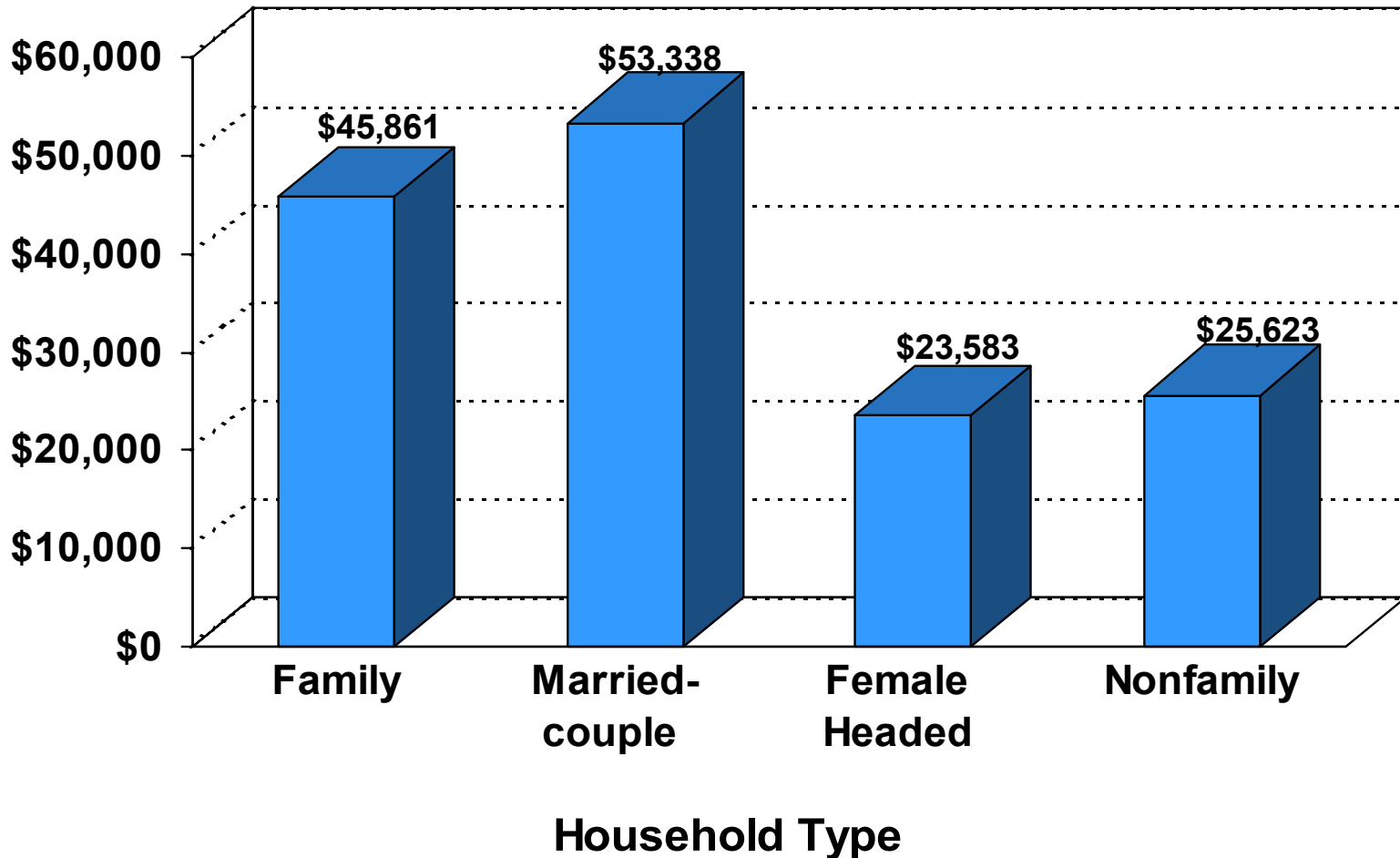
Thousands



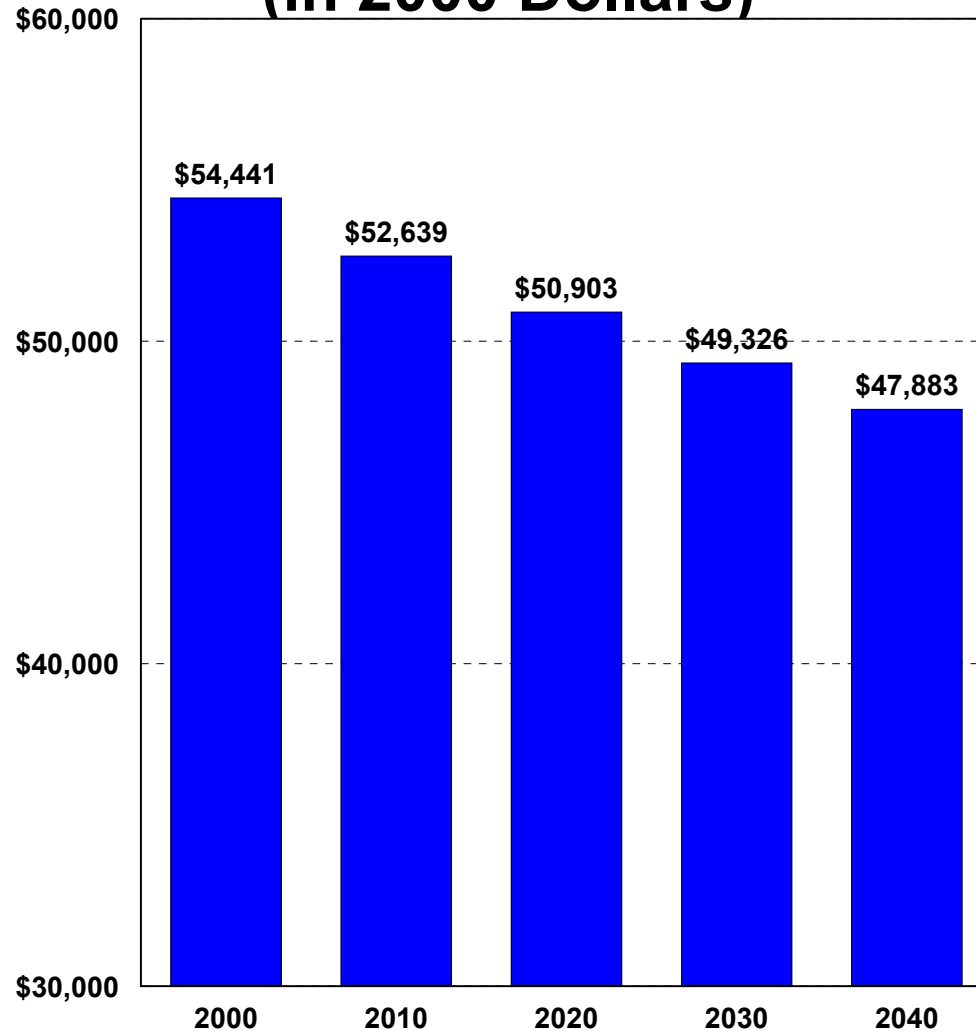
# Median Household Income In 1999 in Texas by Race/Ethnicity of Householder



# Median Household Income in 1999 in Texas by Household Type



# Average Household Income in Texas, 2000-2040\* (in 2000 Dollars)



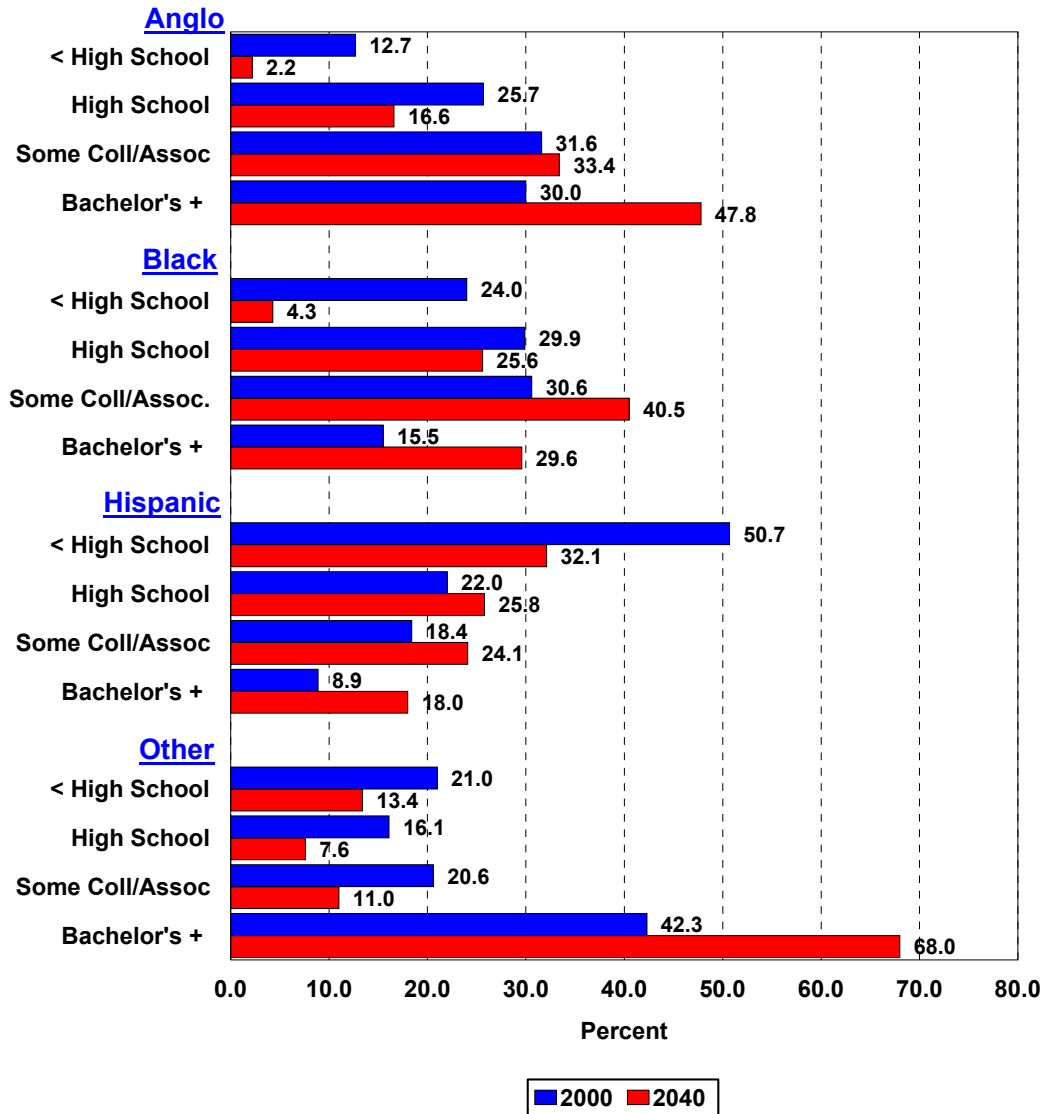
\* Projections are shown for the 1.0 scenario

**POPULATION CONDITIONS:**

**EDUCATION**

---

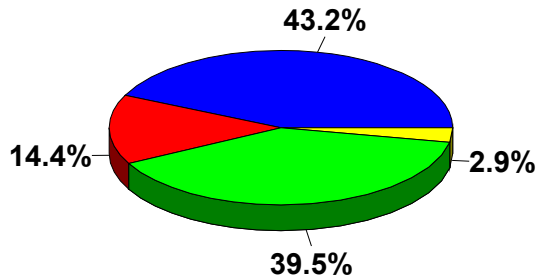
# Percent of Persons 25 Years of Age or Older by Level of Educational Attainment and Race/Ethnicity in 2000 and Projected to 2040\* Assuming 1990-2000 Trends in Educational Attainment Rates



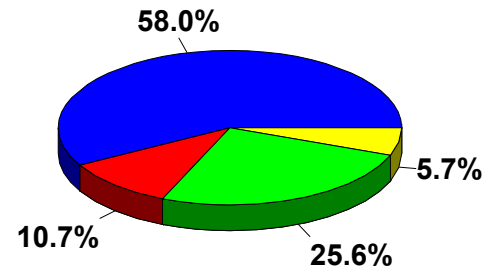
\*Projections are shown for the 1.0 scenario



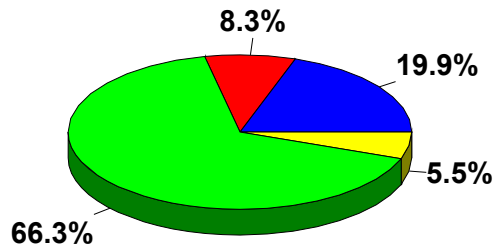
# Ethnic Diversity of the Population Enrolled in Elementary and Secondary Schools and Colleges in Texas, 2000 and 2040\*



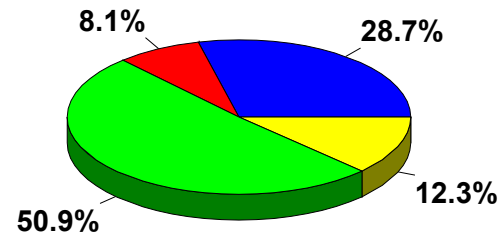
2000 Public Elementary and Secondary



2000 Public Colleges and Universities



2040 Public Elementary and Secondary

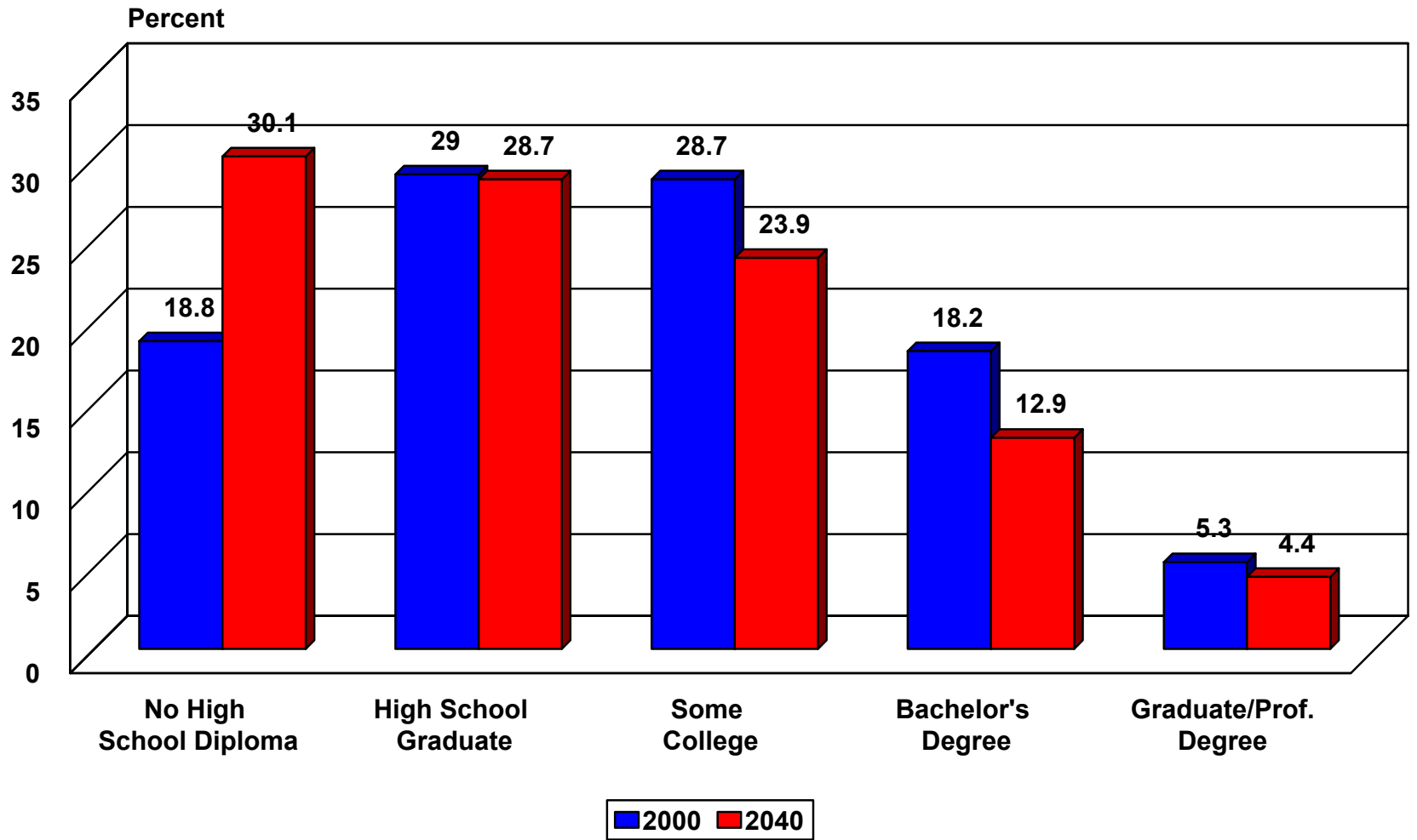


2040 Public Colleges and Universities



\* Projections are shown for the 1.0 scenario

# Projected Percent of Labor Force by Educational Attainment in Texas, 2000 and 2040



\* Projections are shown for the 1.0 scenario

# Texas Ranked

- Median Household Income - \$39,927
  - Texas ranked 30<sup>th</sup>
- Per Capita Income - \$19,617
  - Texas ranked 33<sup>rd</sup>
- Percent High School Graduates – 75.7%
  - Texas ranked 45<sup>th</sup>
- Percent College Graduates+ - 23.2%
  - Texas ranked 27

# Projections

- Texas will be more ethnically diverse
- Texas will be older
- Less educated
- Poorer

# Muchas Gracias

**Cruz C. Torres**

**Phone            979 - 845 - 8522**  
**e-mail        ctorres@tamu.edu**