

# **The Browning of Texas**

by  
**Cruz C. Torres**

---

**Recreation, Parks and Tourism Sciences  
Rural Sociology and Community Studies  
Texas A&M University  
January 19, 2005**

# Major Demographic Trends Affecting the Future

- **Change in Rates and Sources of Population Growth**
- **Increase in the Non-Anglo Population**
- **Aging of the Population**
- **Change in Household Composition**
- **And Latinos are central to all these major trends!!!**

# Who are the Latinos?

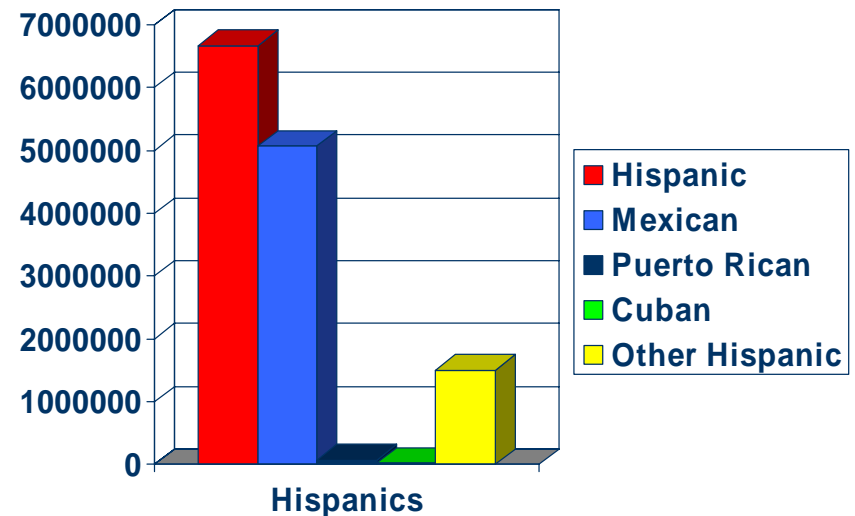
- A very heterogeneous population
- Differences in national histories
  - Mexican American, Mexican, Salvadorian, Nicaraguan, Cuban, Puerto Rican, Dominican, etc.
- Differences in nativity
  - 68.1 percent native-born
  - 31.9 percent foreign born
- Differences in citizenship for foreign born
  - 26.4 percent naturalized citizens
  - 73.6 percent not citizens

# Where did we come From?

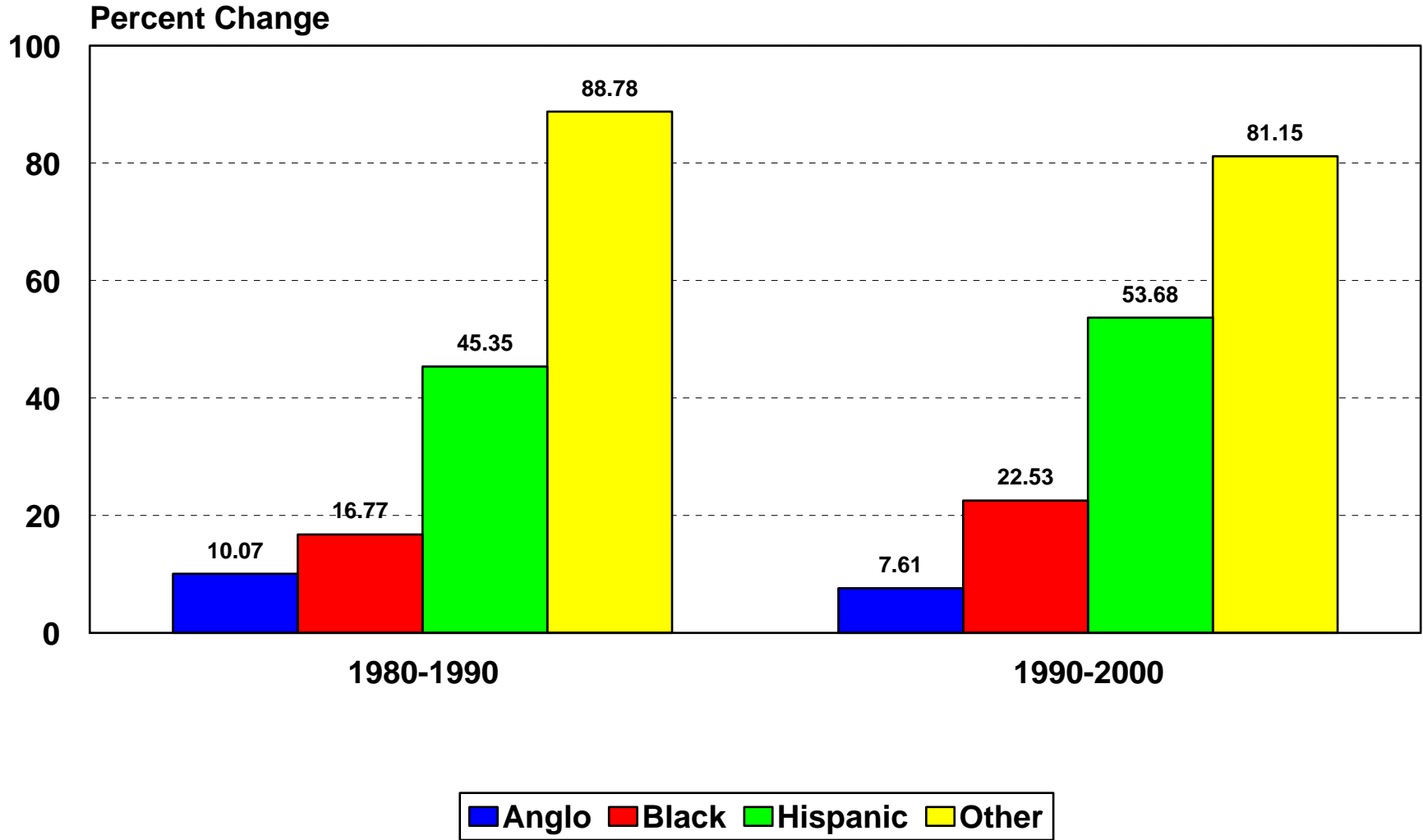
- **Latino in-migration to Texas between 1995-2001 totaled 671,533**
  - 32 percent of out-of-state migrants to Texas were Latinos – of these:
    - 224,082 out-of-state migrants (33.3%)
    - 447,451 migrants from abroad (66.6%)

# 2000 Census Latino Historical Roots

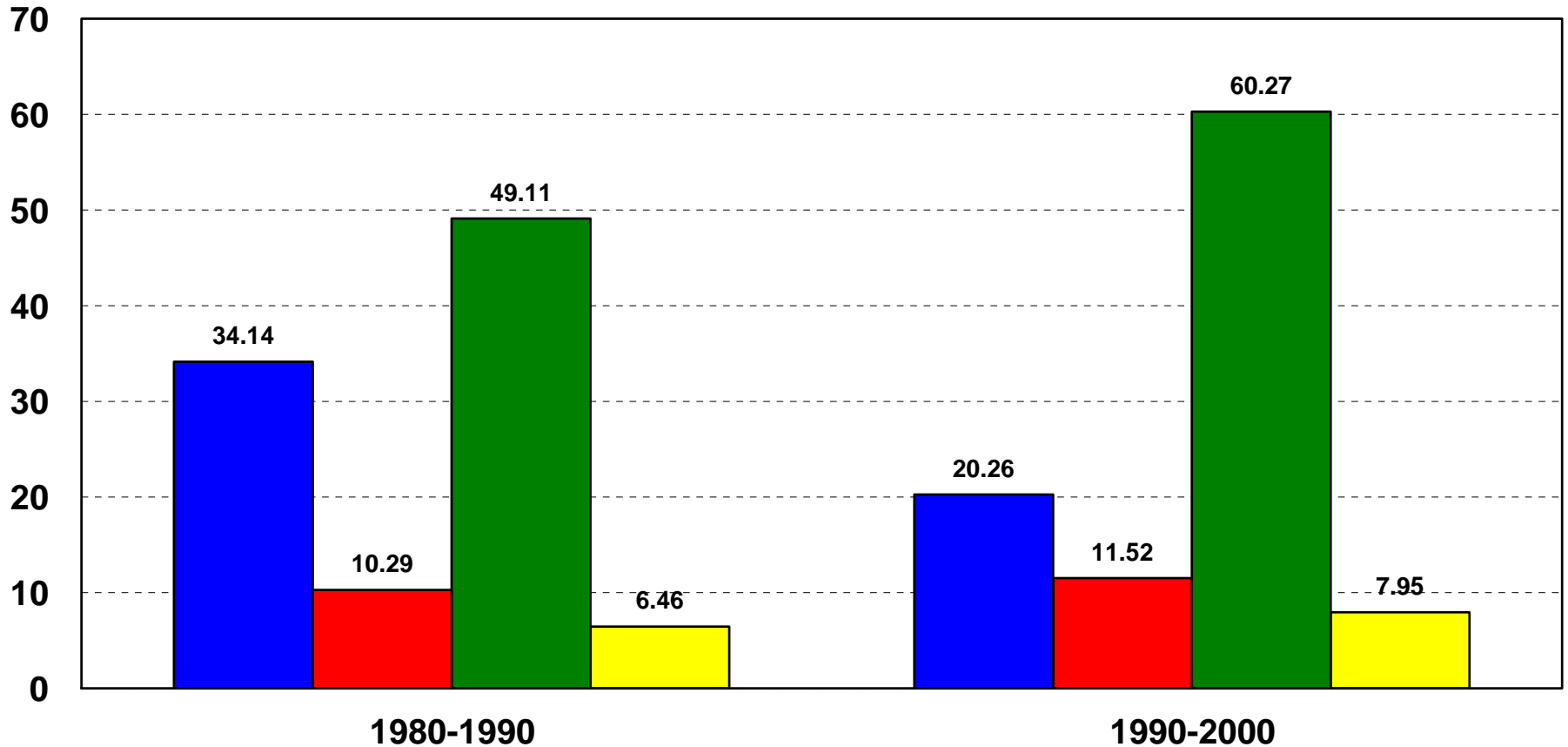
- Latinos = 6,669,666
  - 32 percent of Texas population
- Mexican > 5,071,963
- Puerto Rican > 69,504
- Cuban > 25,705
- Other Hispanic or Latino > 1,502,494



# Percent Change in Population by Race/Ethnicity for 1980-1990 and 1990-2000 in Texas

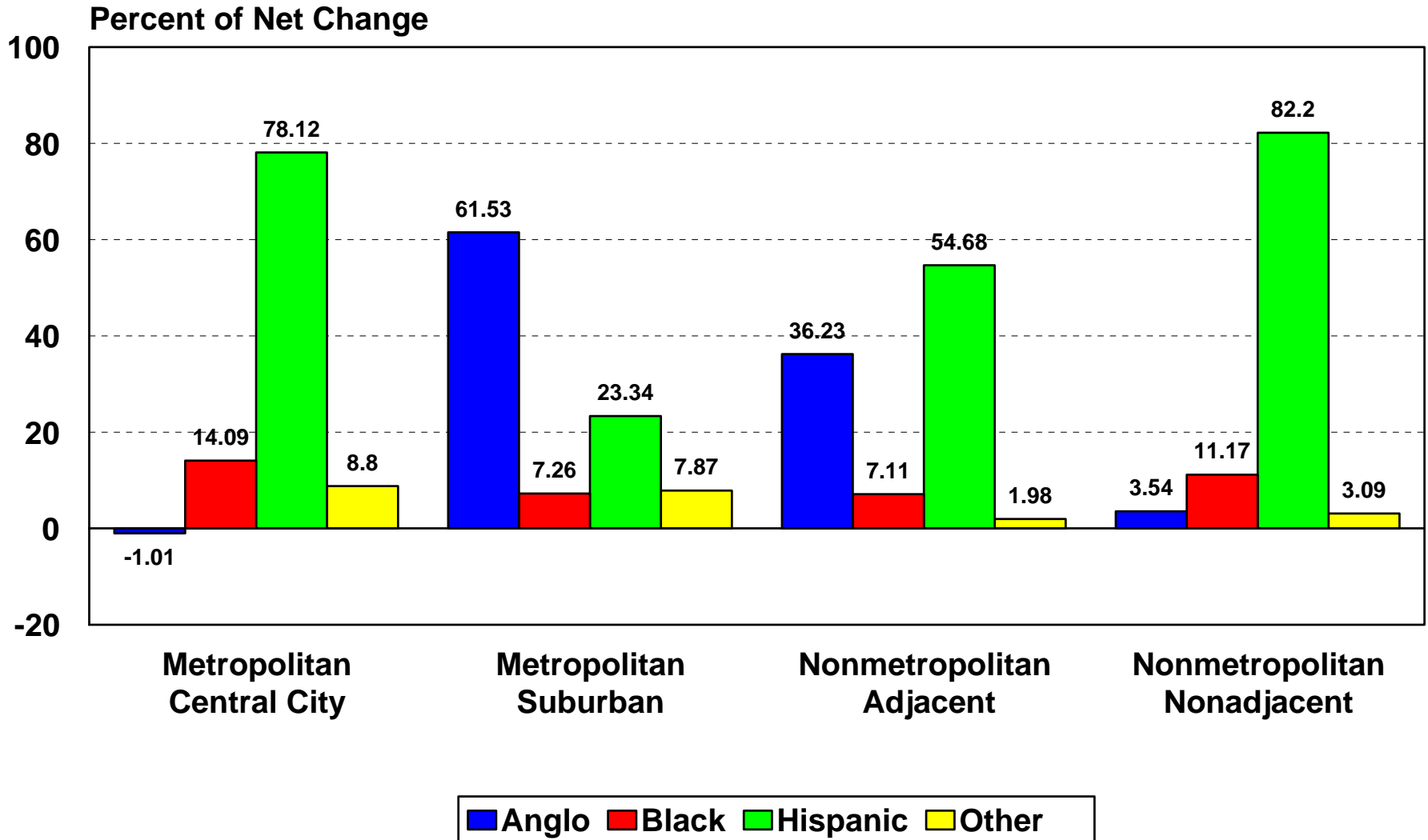


# Proportion of Net Population Change Attributable to Each Race/Ethnicity Group in Texas for 1980-1990 and 1990-2000



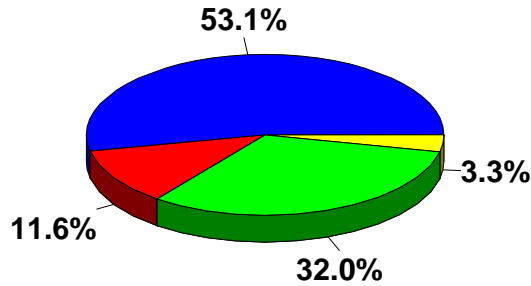
■ Anglo ■ Black ■ Hispanic ■ Other

# Proportion of Net Population Change from 1990 to 2000 Attributable to Each Racial/Ethnic Group by Each Metropolitan Status Type in Texas

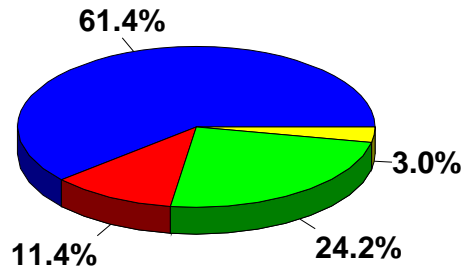




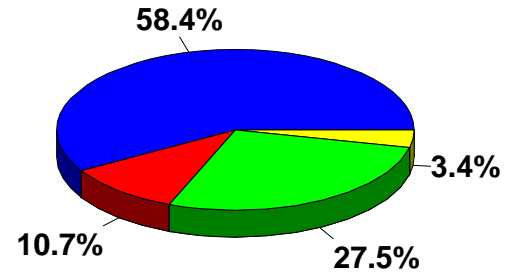
# Ethnic Diversity of the Population, Householders, and Labor Force in Texas, 2000 and 2040\*



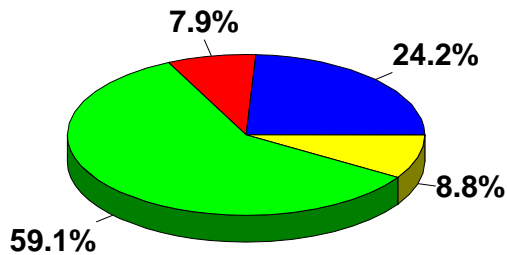
2000 Population



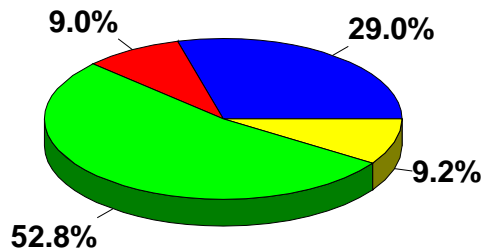
2000 Householders



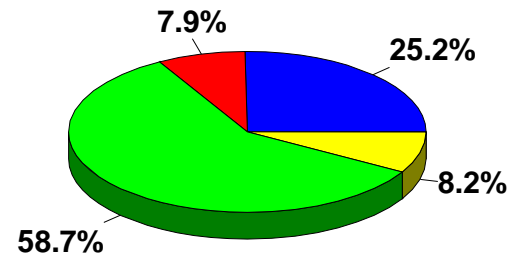
2000 Civilian Labor Force



2040 Population



2040 Householders



2040 Civilian Labor Force



\* Projections are shown for the 1.0 scenario

# Latino Employment

- Latinos (16-64) employment rate 91.3%
  - Texas overall employment rate 93.9
- Latinos (16-64) unemployment rate 8.7%
  - Texas overall unemployment rate 6.1%

# Differences in level acculturation

- Generational difference
  - Recency of immigration
- Ethnocultural differences in self-identification
  - Latino                      Hispanic                      Mexican American
  - Mexican                      Chicano                      American
- Biculturalism vs. monoculturalism
- Bilingual vs. monolingual
  - 18.5 percent of Hispanics speak only English
  - 81.5 percent of Hispanics speak a language other than English

# LATINO AGE DISTRIBUTION

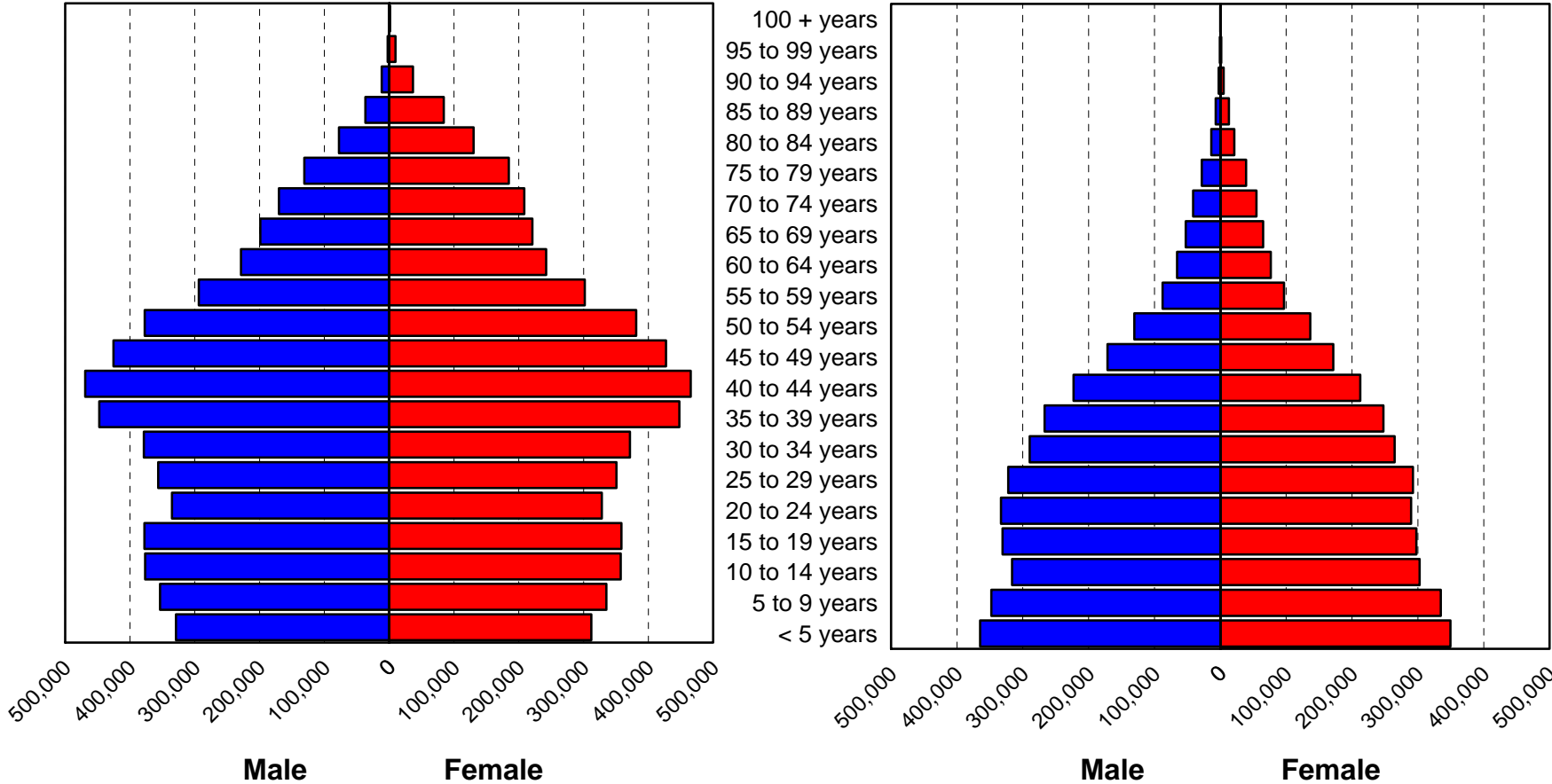
- Latinos youngest population
  - Cubans oldest subpopulation
  - Mexicans and Central Americans youngest
  - Several counties in Texas have over 1/3 of the population under 18 years old
  - Age distribution varies across Texas regions

# Population Pyramids for Anglo and Hispanic Ethnic Groups in Texas, 2000

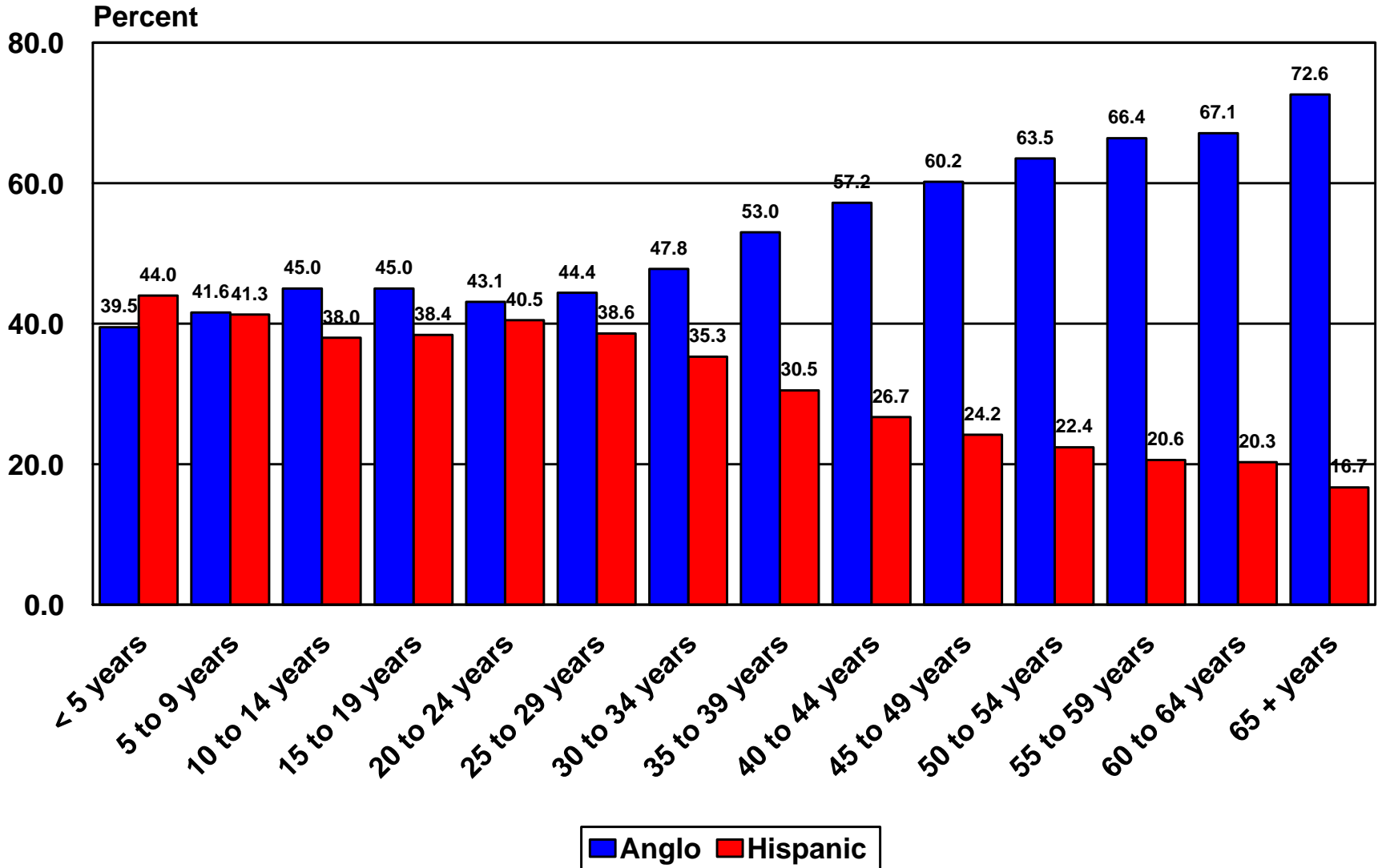
**Anglo**

**Hispanic**

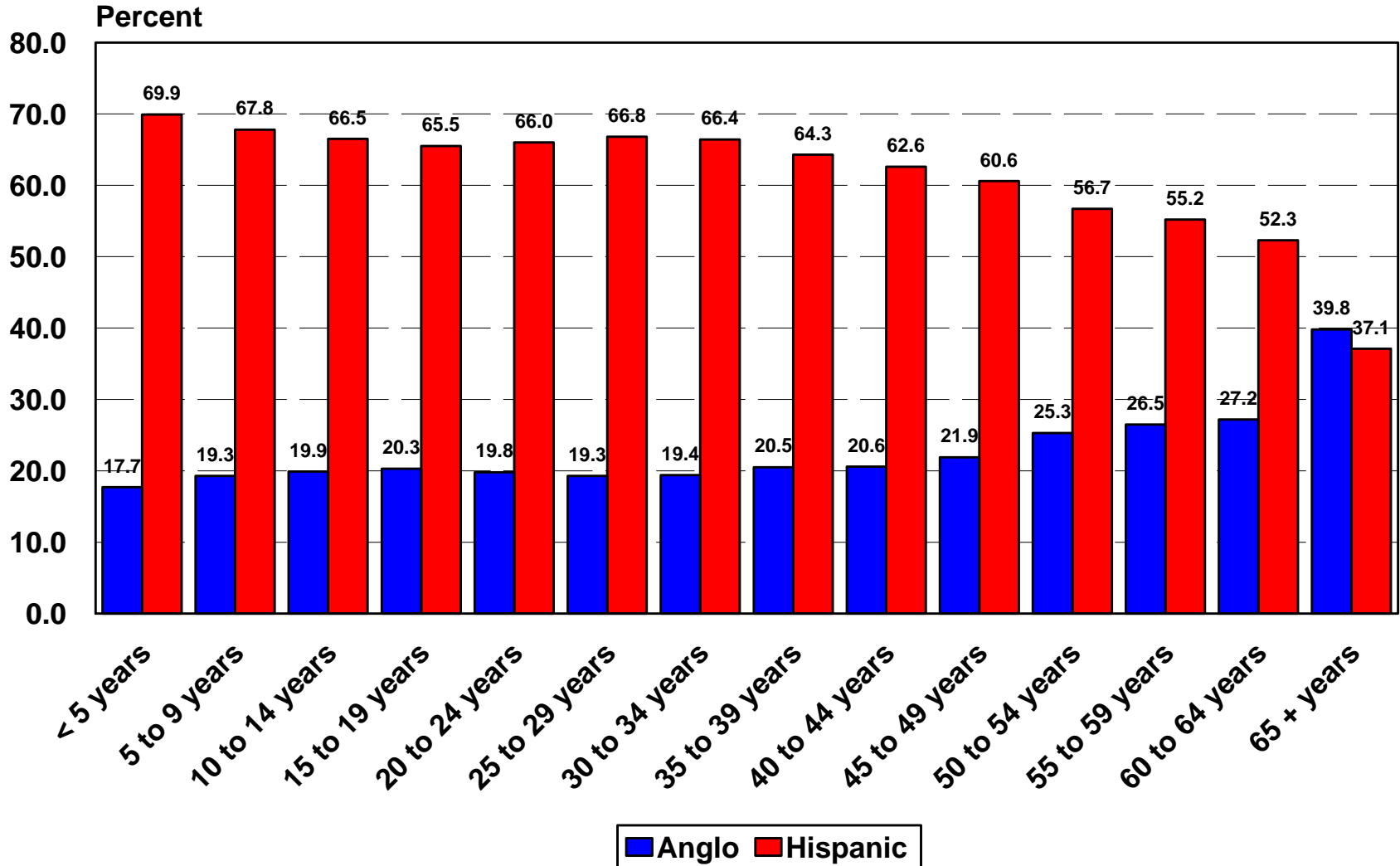
Age



# Percent of Texas Population by Age Group and Ethnicity, 2000



# Percent of Texas Population by Age Group and Ethnicity, 2040\*



\* Projections are shown for the 1.0 scenario

# Implications of Youthful Population

- Higher fertility rates
- Greater demand for employment opportunities
- Greater demand on educational services
- Greater demand for housing stock



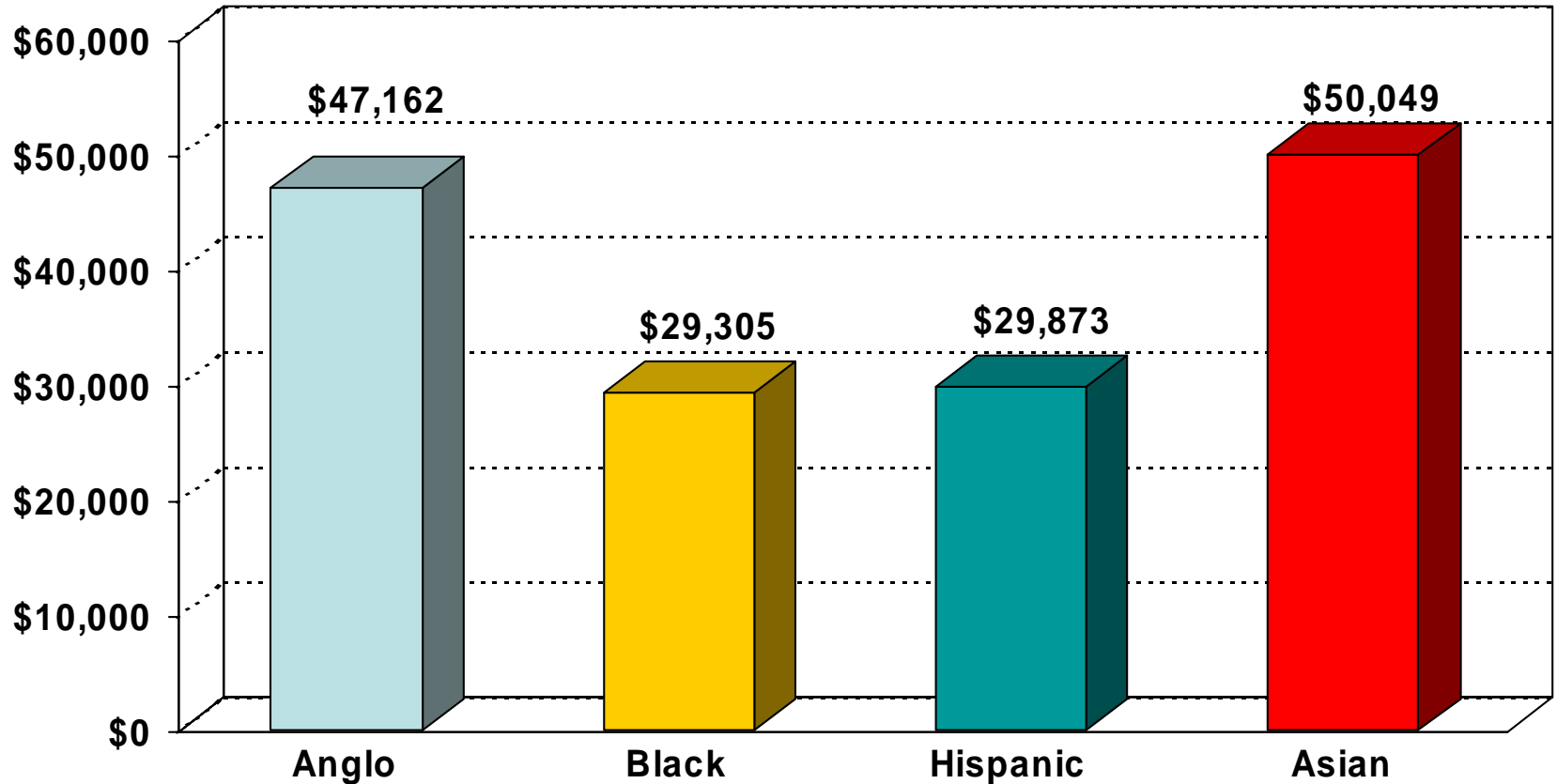
# Household and Family Composition

- **Decrease in family size**
  - From 3.41 in 1950 to 2.74 in 2000
- **1990-2000 change in type of households**
  - Family households 20.8% increase
  - Nonfamily households 24.2% increase
- **1990-2000 change in family households**
  - Married couples 16.1% increase
  - Male householder 55.2% increase
  - Female householder 33.6% increase
  - Unmarried partners 87.5% increase

# Latino Household Characteristics

- 82.5% of households are married couples
- 59.7% of households have minor children
- 16.0% are female-headed households
  - 10.2% have minor children

# Median Household Income In 1999 in Texas by Race/Ethnicity of Householder



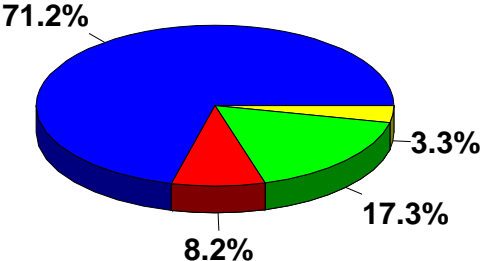
# Latino Economic Profile

- Median Household Income > \$29,873
  - Non-Hispanic whites > \$47,162
- Median Family Income > \$30,840
  - Non-Hispanic whites > \$57,194
- Per Capita Income > \$10,770
  - Non-Hispanic whites > \$26,197

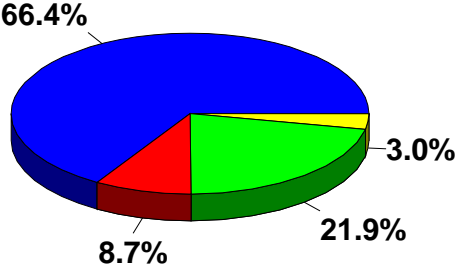
# Latino Economic Profile: Poverty

- 22.8% of Latino families below poverty level
  - Non-Hispanic white 5.2%
- 25.4% of Latino individuals below poverty
  - Non-Hispanic whites 7.8%
- 25.7% of Latino Elderly below poverty level
  - Non-Hispanic whites 8.0%
- 31.2% of Latino Children below poverty level
  - Non-Hispanic whites 8.3%

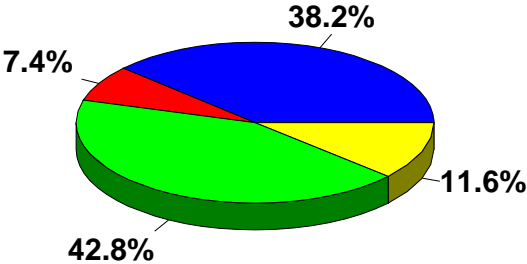
# Ethnic Diversity of Household Income and Consumer Expenditures in Texas, 2000 and 2040\*



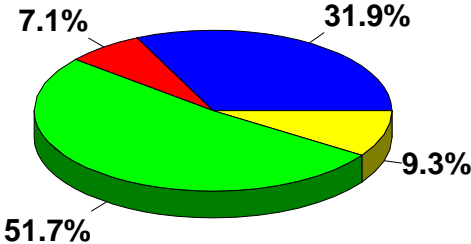
2000 Aggregate Household Income



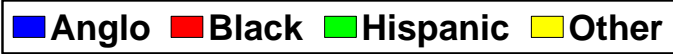
2000 Consumer Expenditures



2040 Aggregate Household Income



2040 Consumer Expenditures

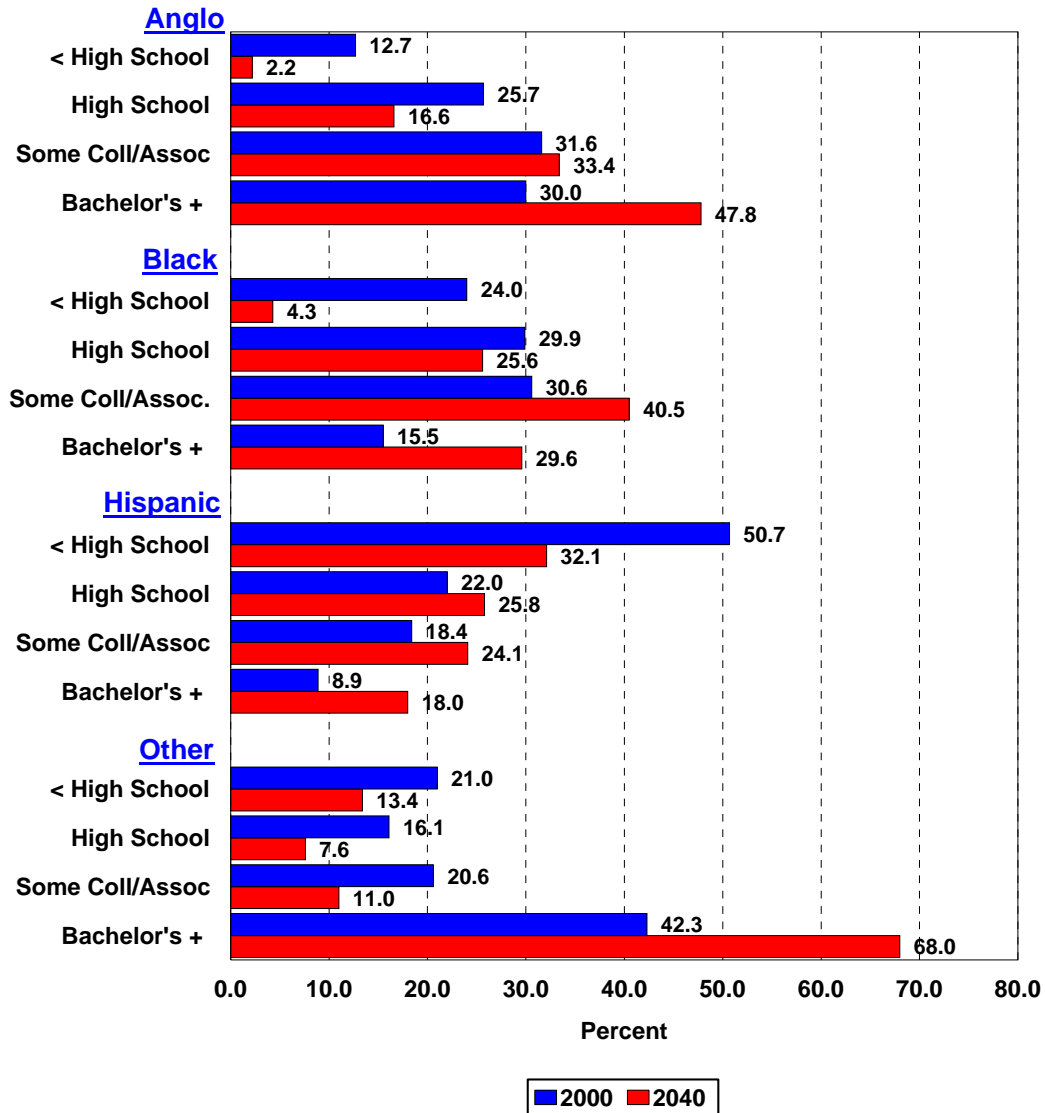


\* Projections are shown for the 1.0 scenario

# Latino Educational Outcomes

- 31.5% Less than 9<sup>th</sup> grade education
- 49.3% high school diploma/equivalency
- 14.9% some college/no degree
- 3.5% Associate degree
- 6.0% Bachelors degree
- 2.9% Graduate/professional degree

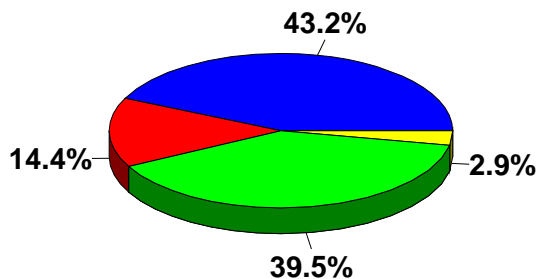
# Percent of Persons 25 Years of Age or Older by Level of Educational Attainment and Race/Ethnicity in 2000 and Projected to 2040\* Assuming 1990-2000 Trends in Educational Attainment Rates



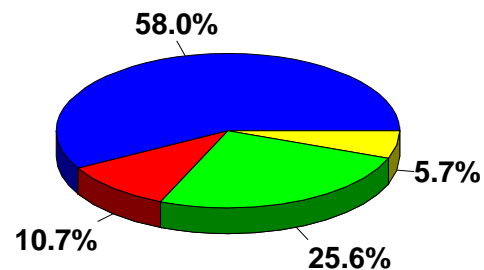
\*Projections are shown for the 1.0 scenario



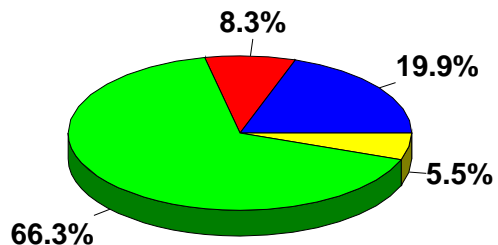
# Ethnic Diversity of the Population Enrolled in Elementary and Secondary Schools and Colleges in Texas, 2000 and 2040\*



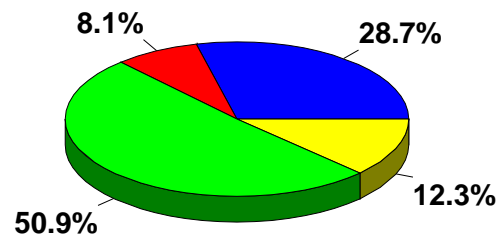
2000 Public Elementary and Secondary



2000 Public Colleges and Universities



2040 Public Elementary and Secondary



2040 Public Colleges and Universities



\* Projections are shown for the 1.0 scenario

# Implications of Low English Proficiency & Education Attainment

- High levels of underemployment
  - Part-time
  - Seasonal
- High levels of unemployment
- Low-skilled occupations
- Low-wage occupations
  - Low/no benefits
  - Low/no security
- High sensitivity to economic downturns
  - Last hired – first fired

**What does all these mean ?**



# Shifts in Settlement Patterns

- Continued increase in population size
  - In nontraditional Hispanic areas
- Change in the demographic, economic, political and cultural character of a community, places of worship, work, play and education
- Demographic change can disrupt social patterns
- Add tension to social relations

# Language Barriers

- Will require greater availability of bilingual-bicultural professionals
- Language limitations (of Latinos and service providers) will impede full participation in social and community institutions
  - Health care
  - Education
  - Law enforcement
  - Religion

# Market Consequences

- Latinos as permanent community fixtures expand consumer base
  - Need housing, education, health services
- Buying power
  - Young population has tremendous buying power
  - New market niches: media, specialty items

# Community Impact

- Latino concentrations impose net costs
  - Funding for increased educational needs
  - Increase in poverty rates
  - Lower median incomes
  - Overall lower levels of education attainment
  - Residential segregation/ghettoization of Latinos

# Conclusions

- Latinos will play a central role in the future of Texas **BUT**
- Many of the factors associated with successful community development are associated with social capital **AND**
- Latinos will need to acquire additional social and human capital to fully contribute to the Texas prosperity



## Conclusions (cont.)

- Meaningful interaction between Latino and non-Latino community members will inform policy makers and policy on Latino issues and needs
- And stronger Texas communities will be forged

**AND**

**As an integrated member of the Texas community**

**--- mi casa es su casa!**

**Muchas Gracias**

**Phone      979 - 845 - 8522**  
**e-mail     ctorres@tamu.edu**