

Texas- A Majority/Minority State: Social & Economic Impacts

by
Cruz C. Torres

Texas A&M University
September 15, 2005

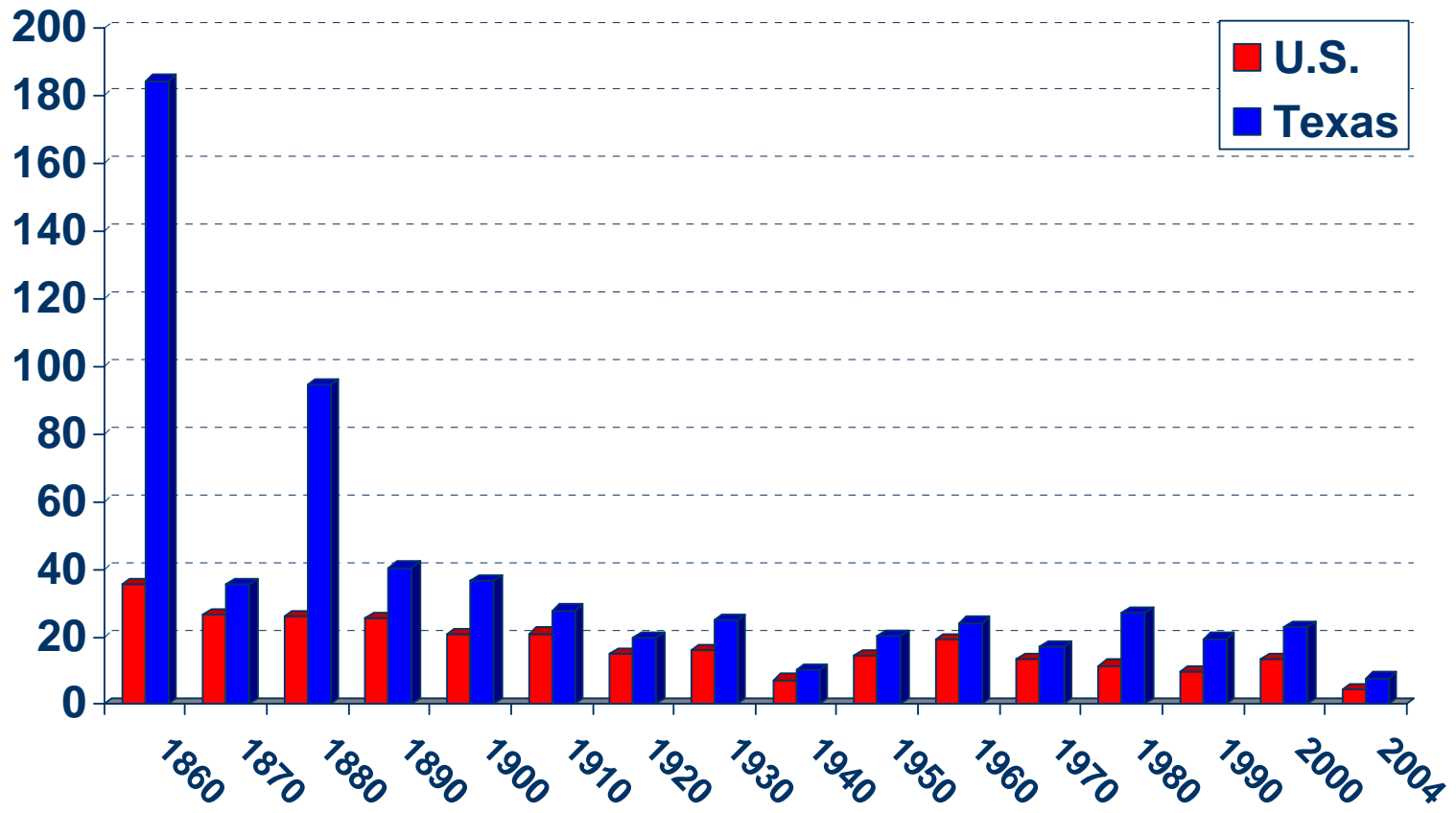
Major Demographic Trends Affecting the Future

- **Change in Rates and Sources of Population Growth**
- **Increase in the Non-Anglo Population**
- **Aging of the Population**

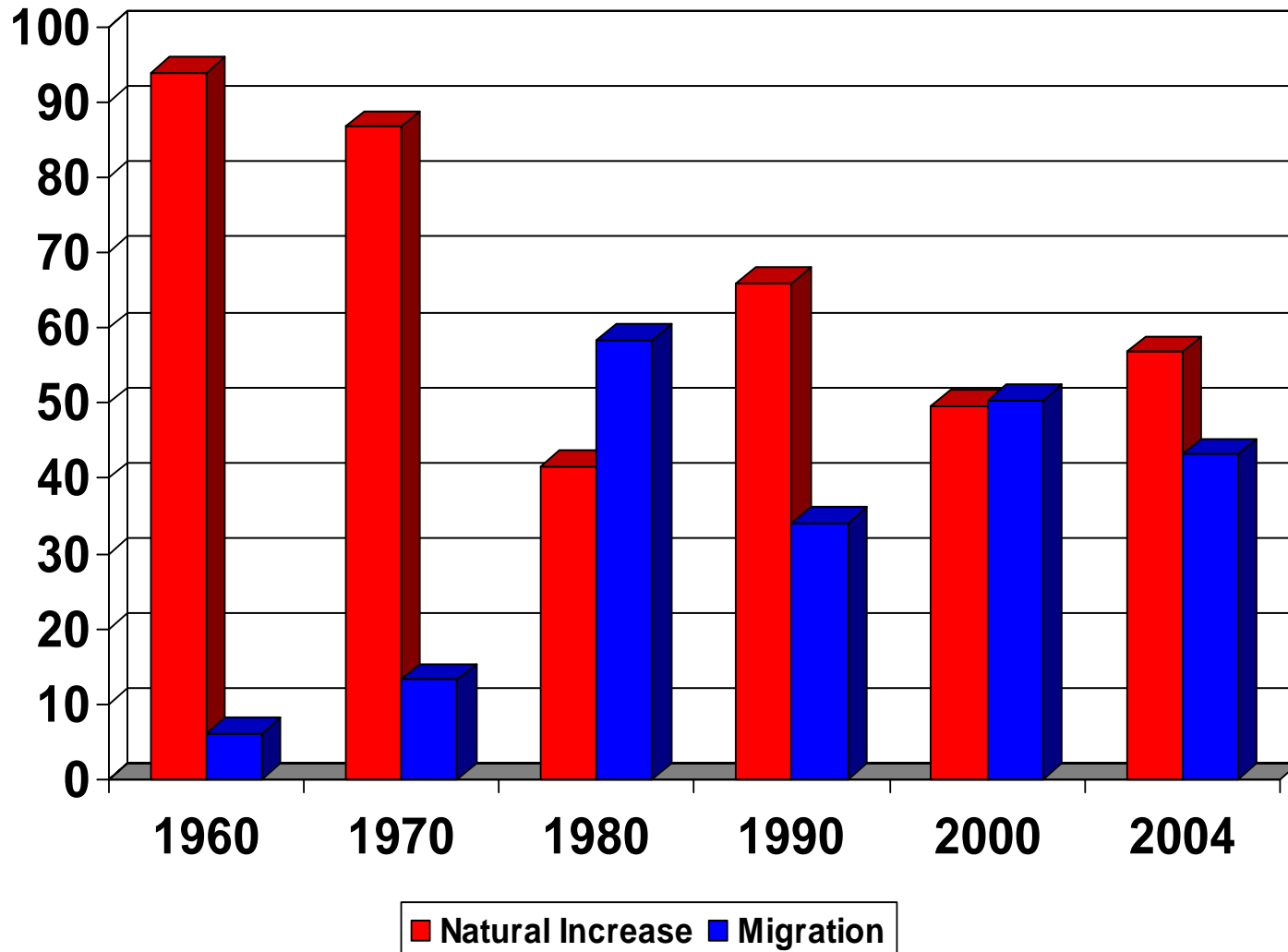
Total Population Change



Percent Population Change in Texas and the United States, 1850-2004



Components and Percent Population Change in Texas 1950-2004

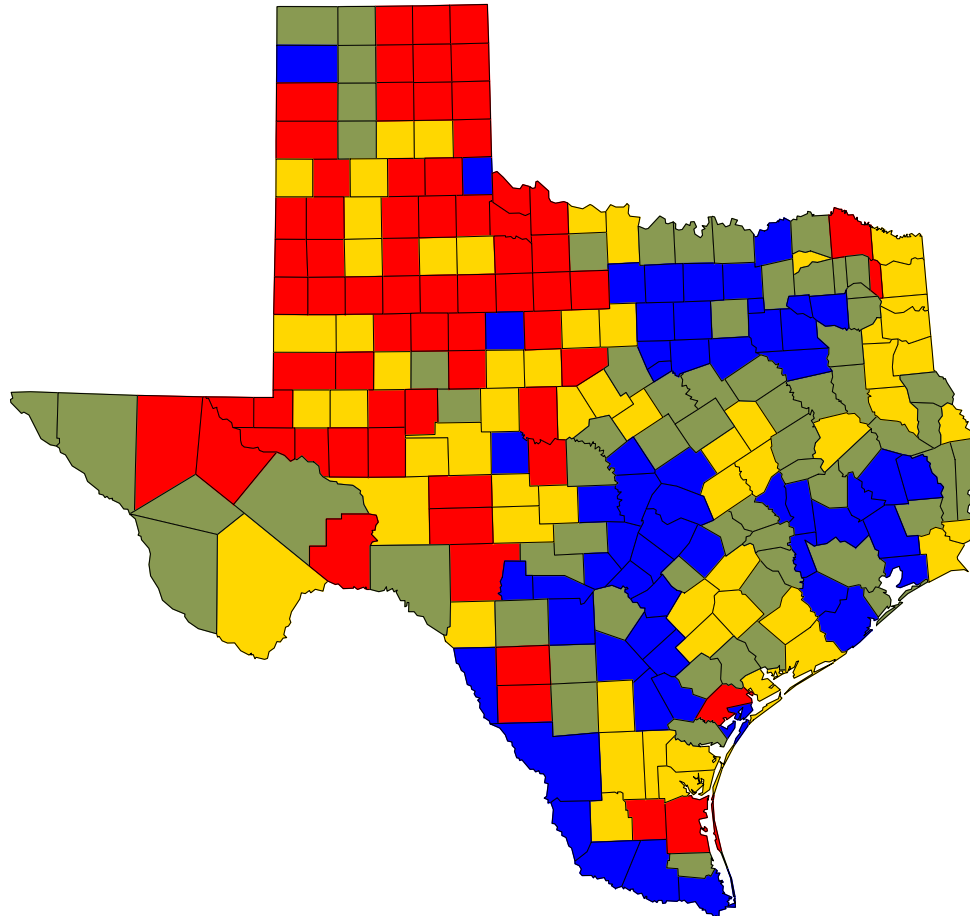


All values for the decennial dates are for the indicated census year. Value for 2004 is as estimated by the U.S. Bureau of the Census.

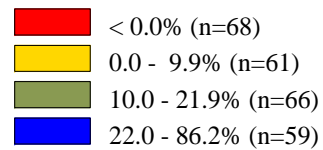
Population in 1990 and 2000, Numerical and Percent Change in Population 1990 to 2000 in Metropolitan and Nonmetropolitan Areas in Texas

Metropolitan Status	Population		Change in Population	
	1990	2000	Number	Percent
Metropolitan Central City	11,615,291	13,993,705	2,378,414	20.48
Metropolitan Suburban	2,550,367	3,698,175	1,147,808	45.01
Nonmetropolitan Adjacent	1,962,353	2,234,027	271,674	13.84
Nonmetropolitan Nonadjacent	858,499	925,913	67,414	7.85

Population Change in Texas Counties, 1990-2000



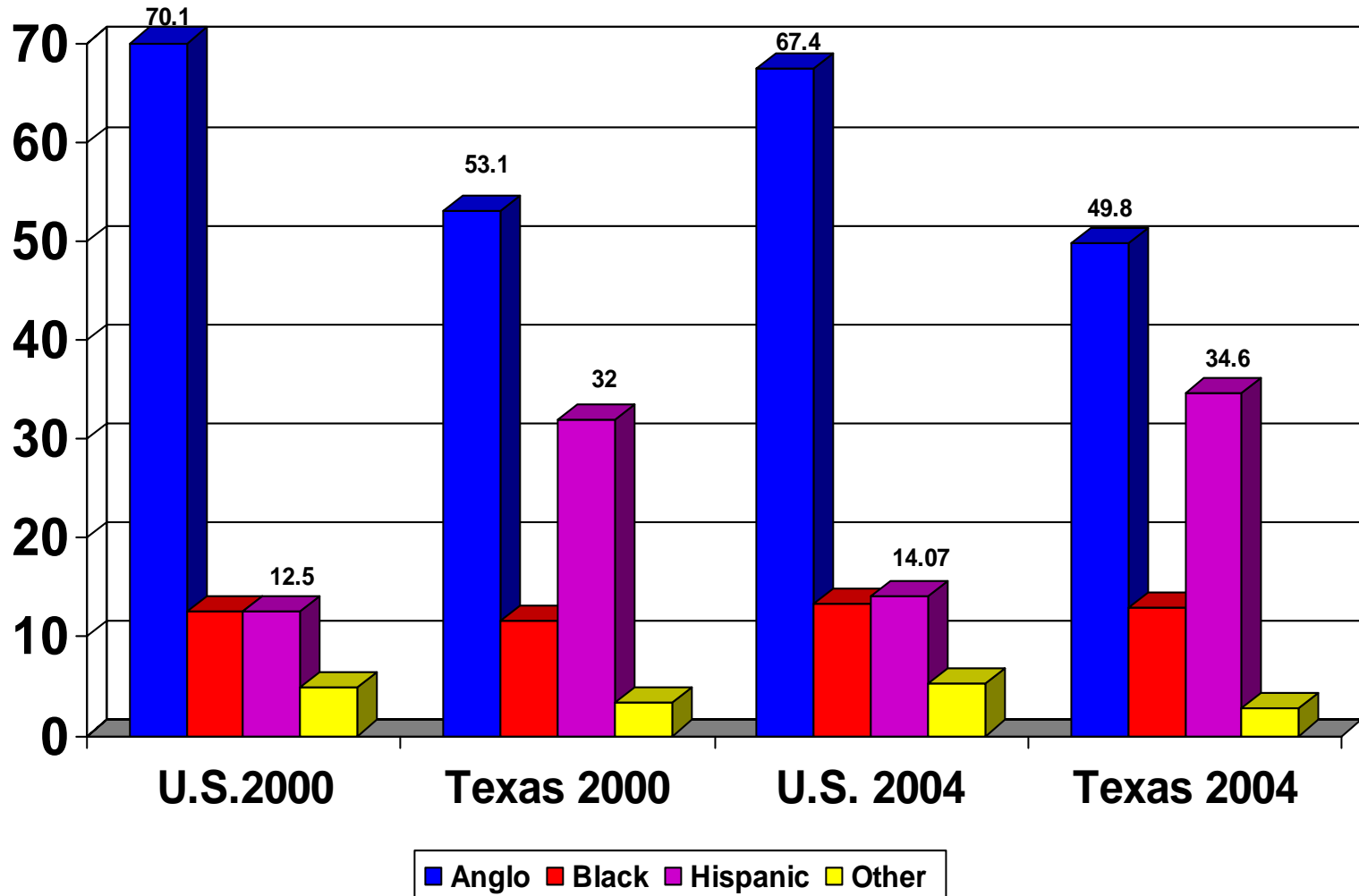
Percent Change 2000-2003



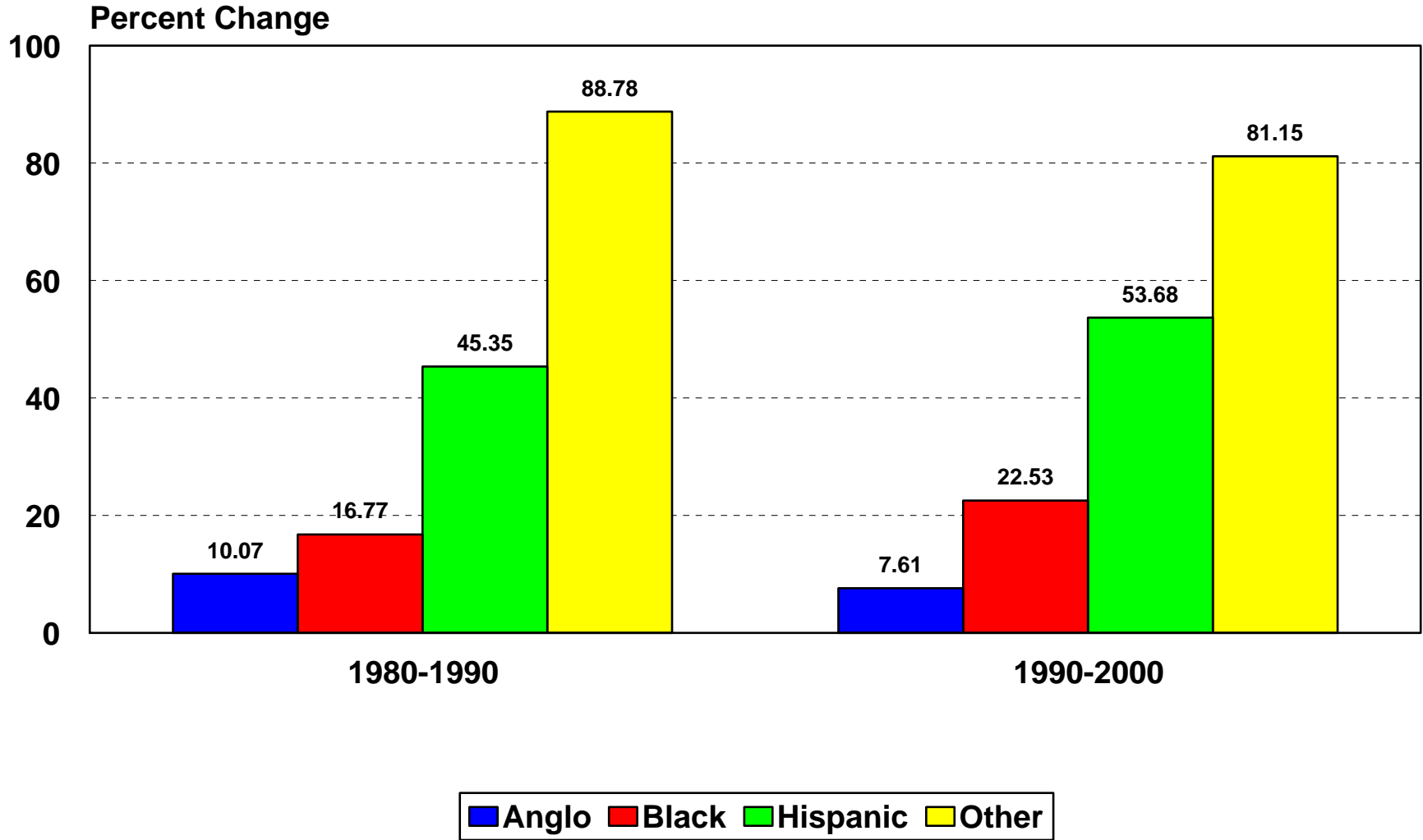
Racial/Ethnic Change in Texas

The slide features a light green background on the left side. A white rounded rectangle is positioned in the upper left, containing the title text. A thick, dark blue horizontal bar is located in the lower right quadrant of the slide.

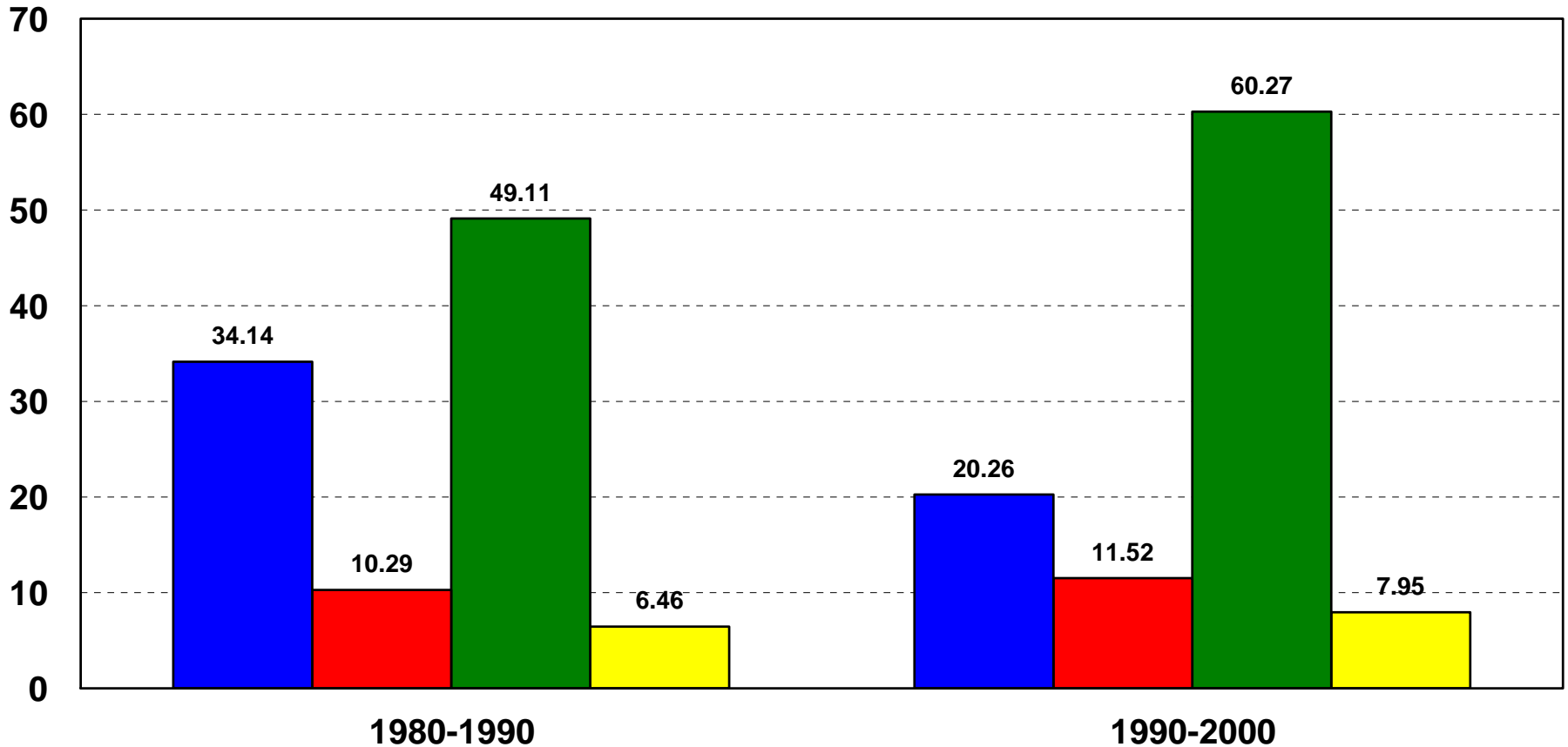
Proportion of Population by Ethnicity for Texas and the United States, 2000 & 2004



Percent Change in Population by Race/Ethnicity for 1980-1990 and 1990-2000 in Texas

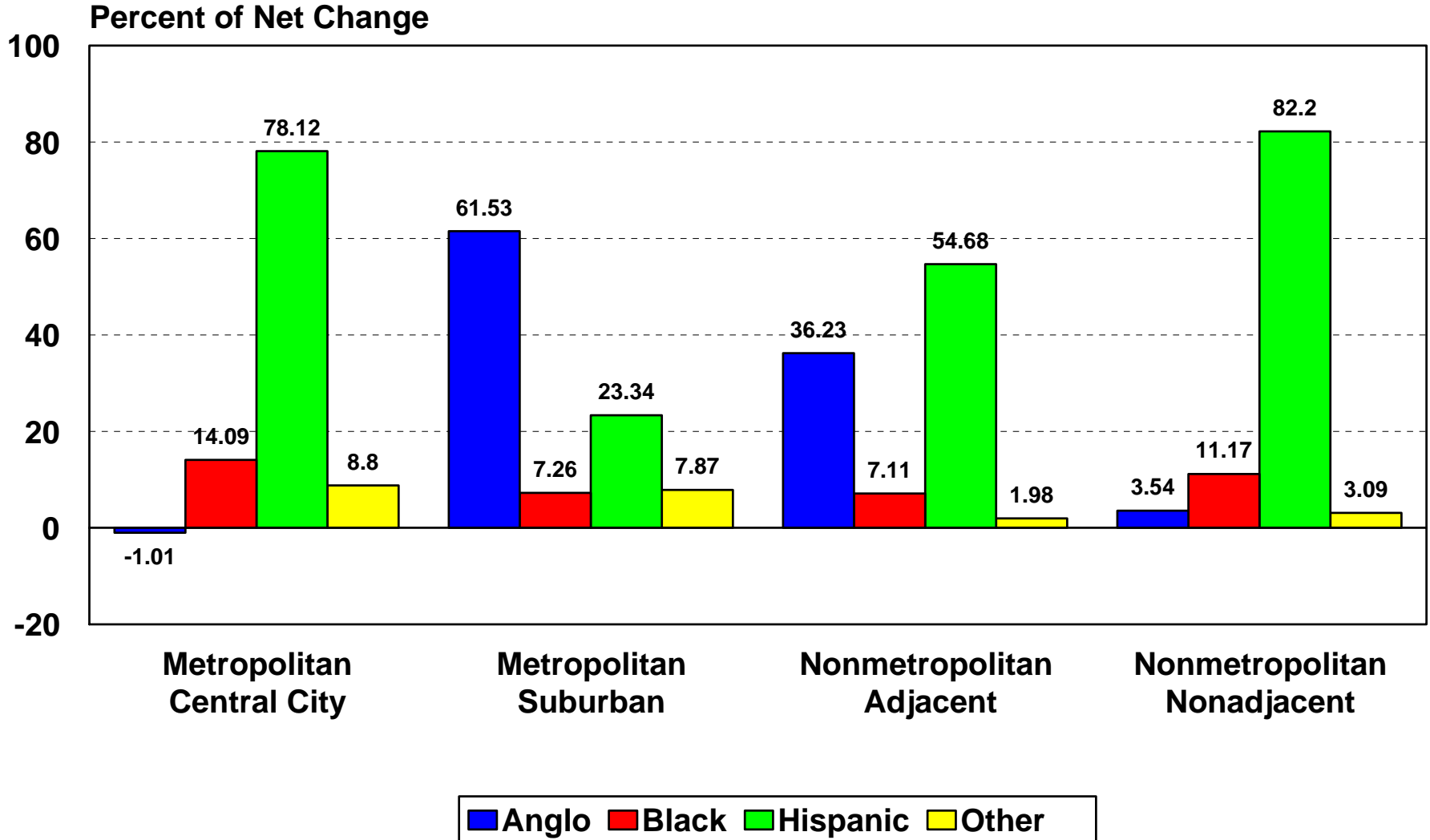


Proportion of Net Population Change Attributable to Each Race/Ethnicity Group in Texas for 1980-1990 and 1990-2000

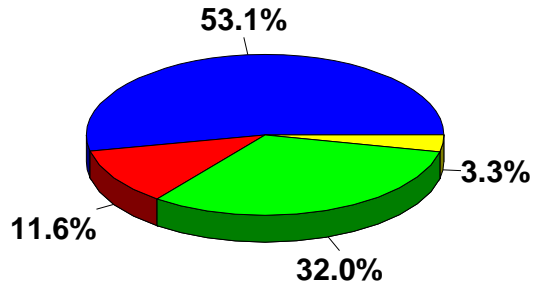


■ Anglo ■ Black ■ Hispanic ■ Other

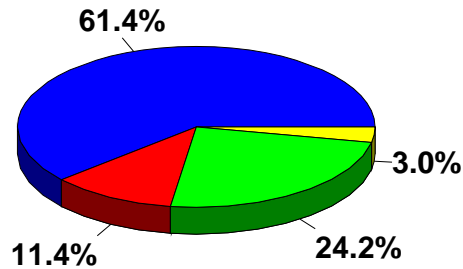
Proportion of Net Population Change from 1990 to 2000 Attributable to Each Racial/Ethnic Group by Each Metropolitan Status Type in Texas



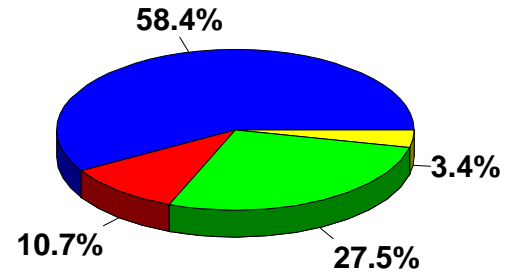
Ethnic Diversity of the Population, Householders, and Labor Force in Texas, 2000 and 2040*



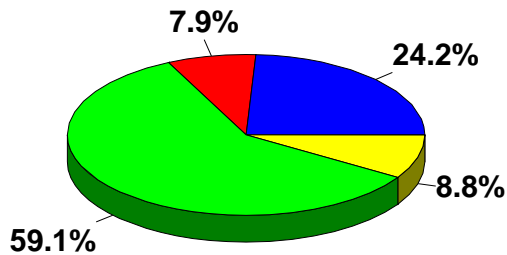
2000 Population



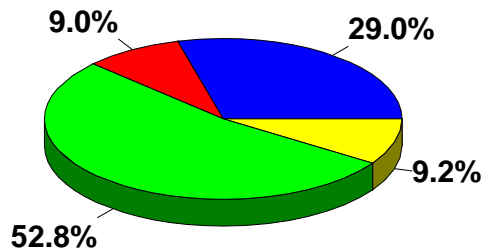
2000 Householders



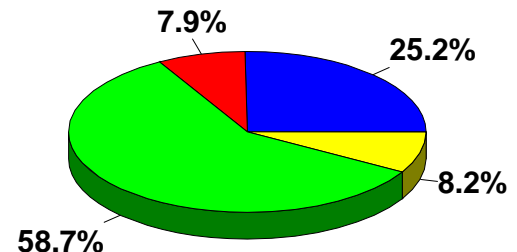
2000 Civilian Labor Force



2040 Population



2040 Householders



2040 Civilian Labor Force

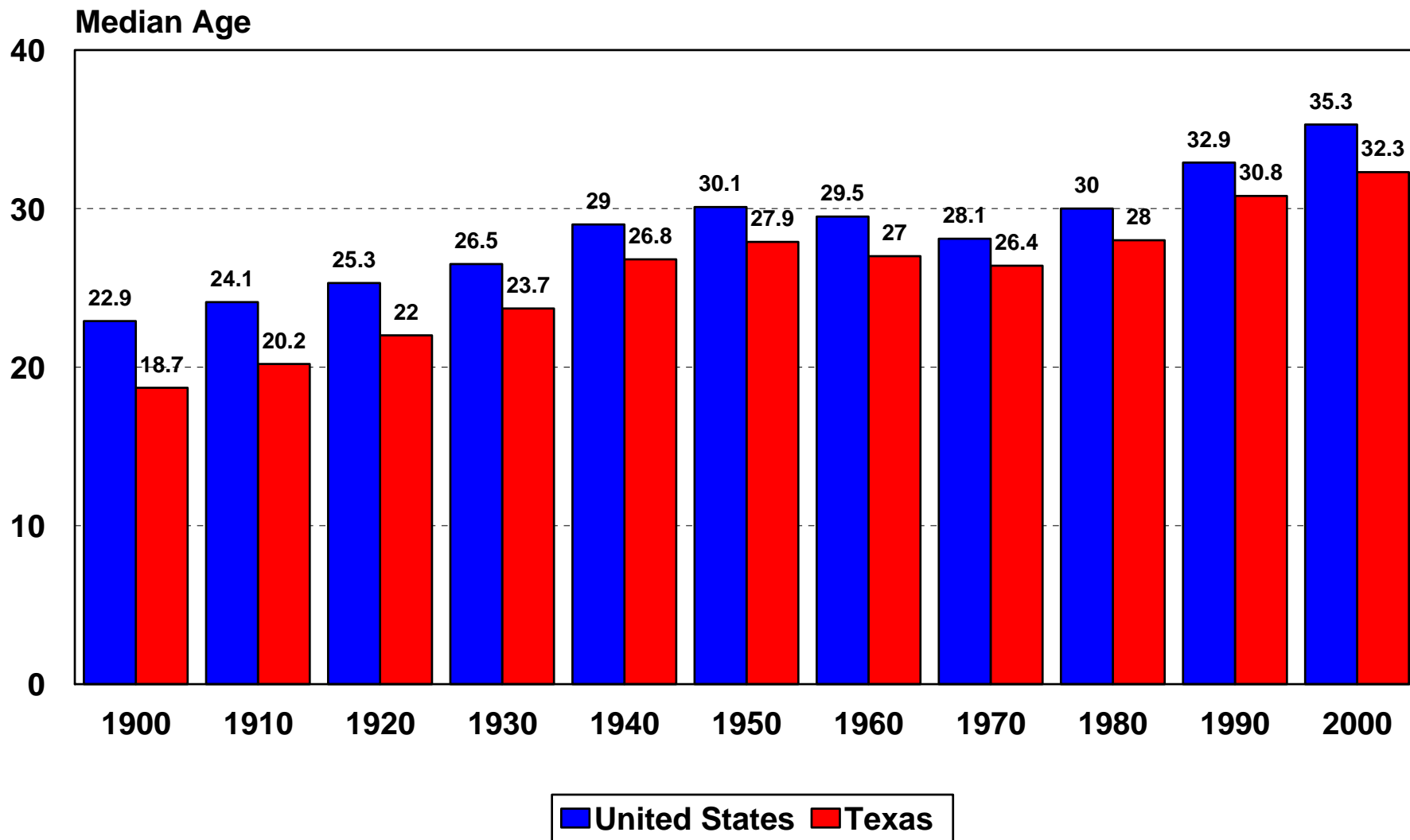


* Projections are shown for the 1.0 scenario

Age Changes in Population



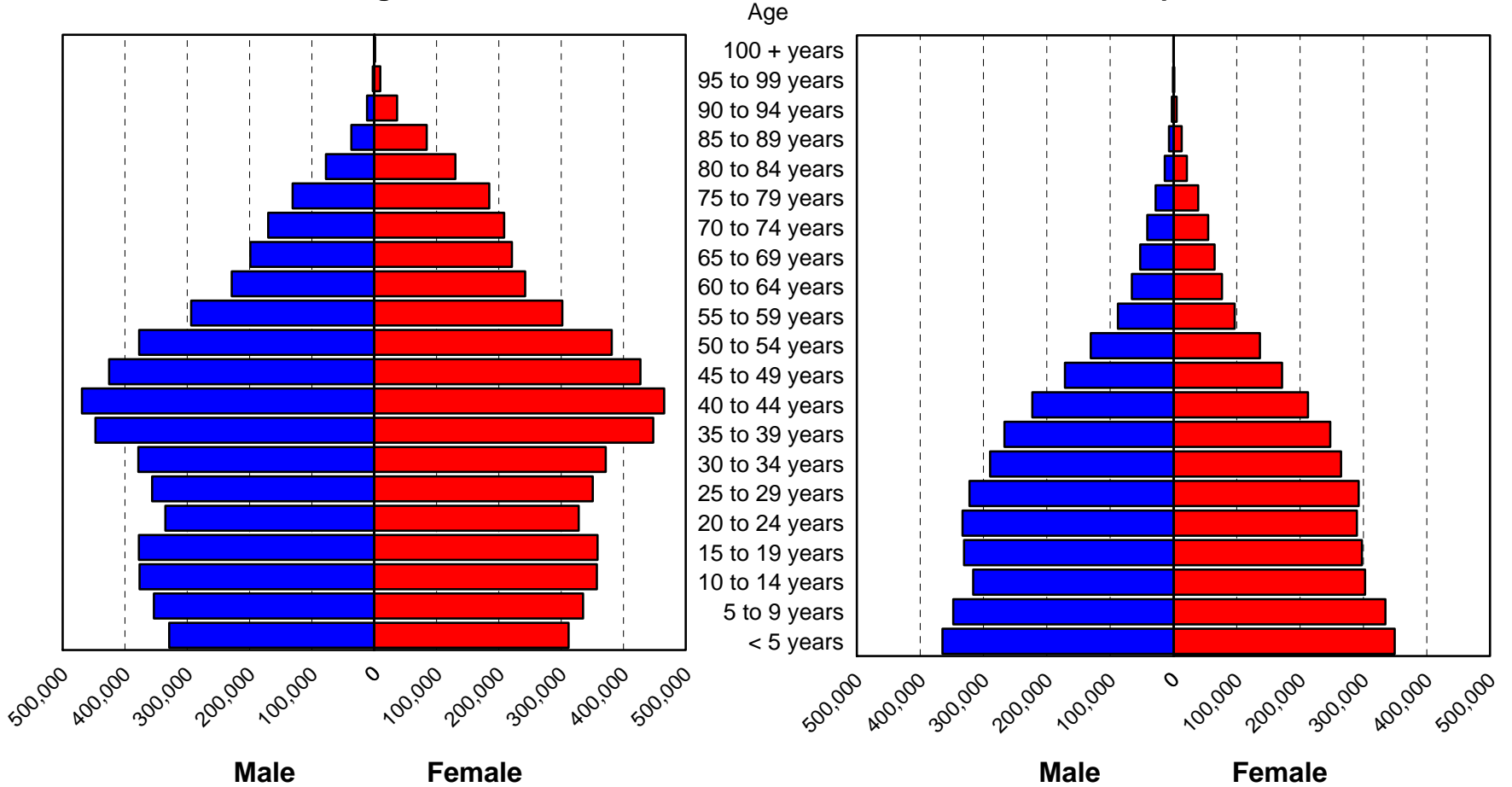
Median Age in the United States and Texas, 1900-2000



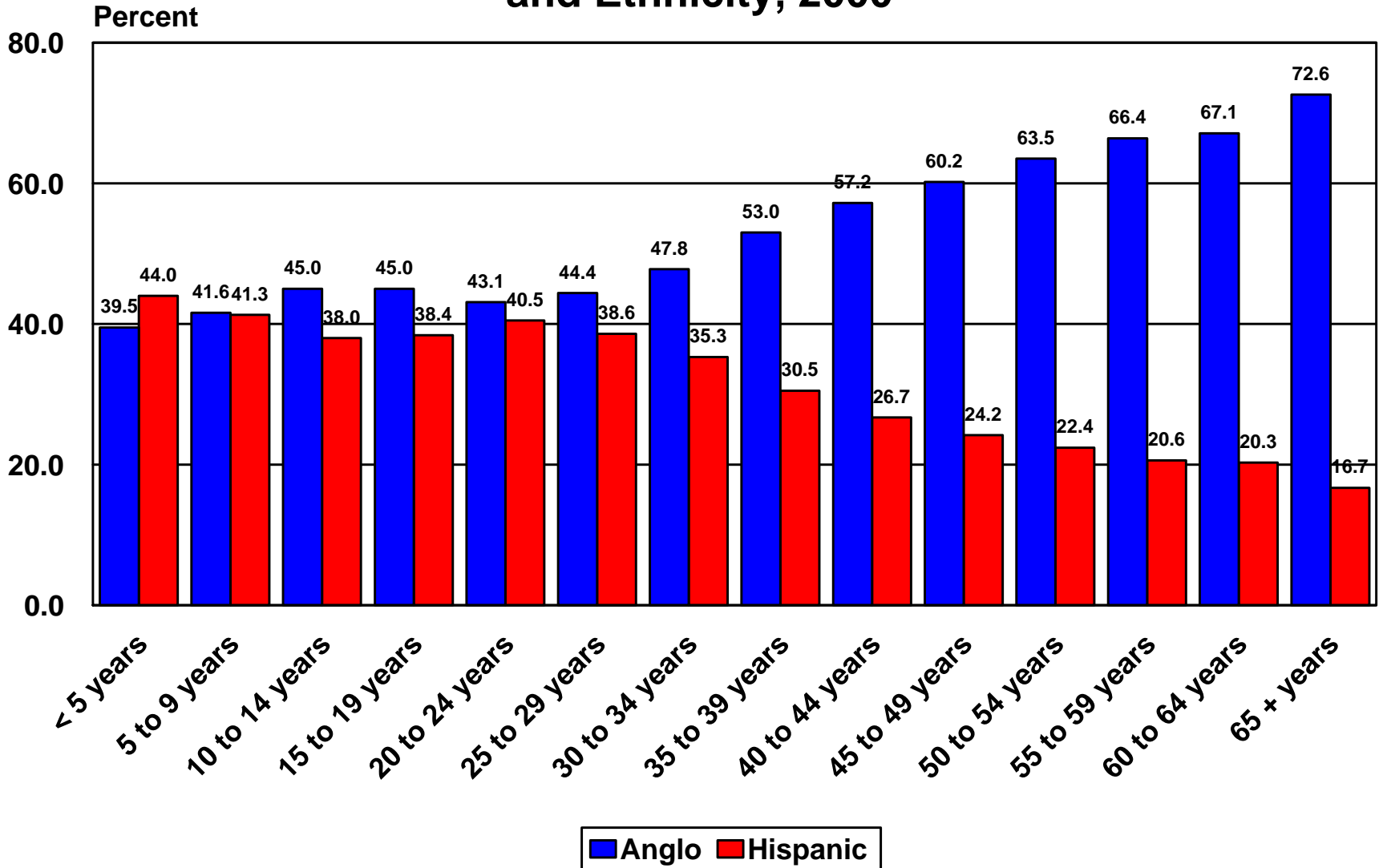
Population Pyramids for Anglo and Hispanic Ethnic Groups in Texas, 2000

Anglo

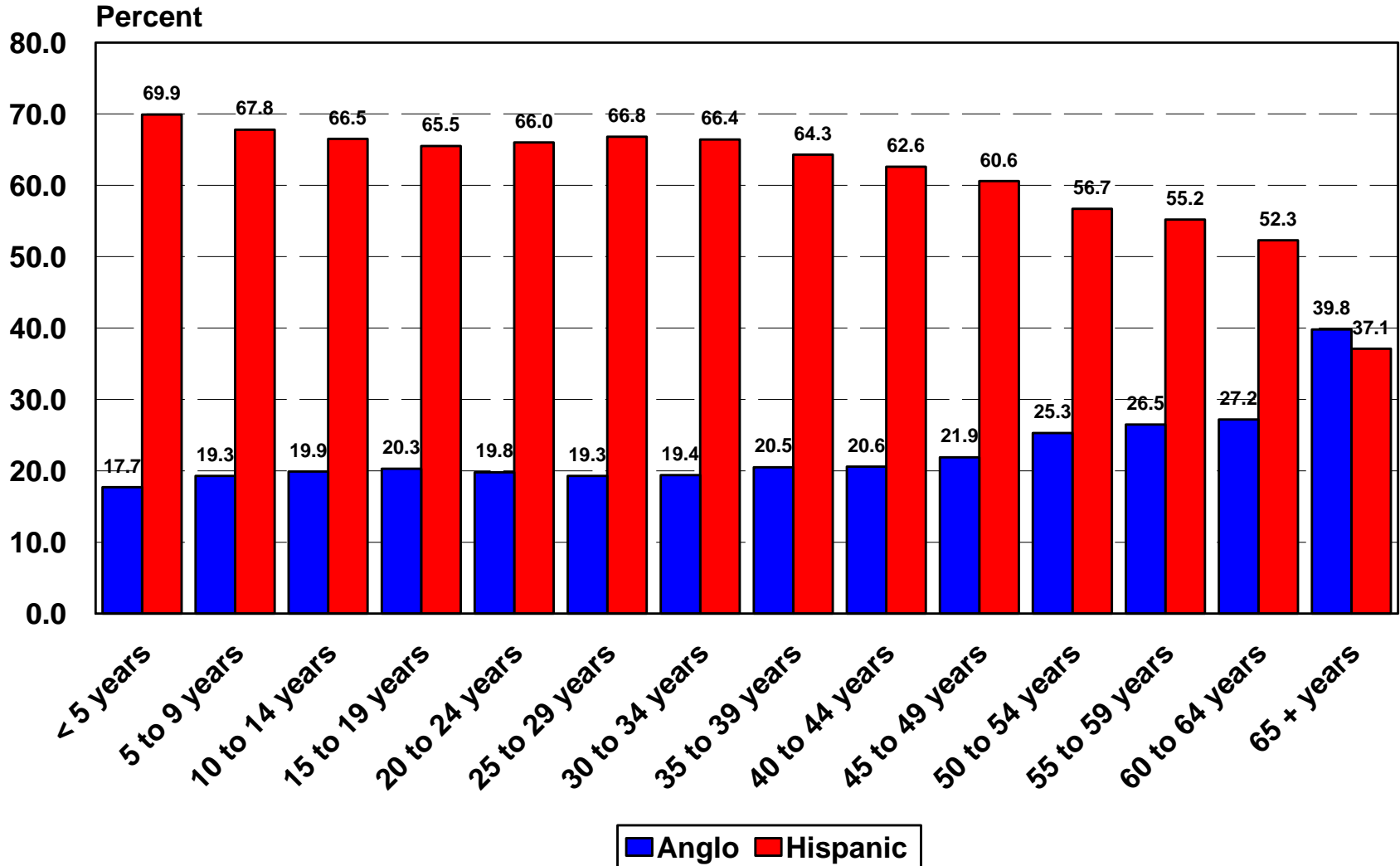
Hispanic



Percent of Texas Population by Age Group and Ethnicity, 2000



Percent of Texas Population by Age Group and Ethnicity, 2040*



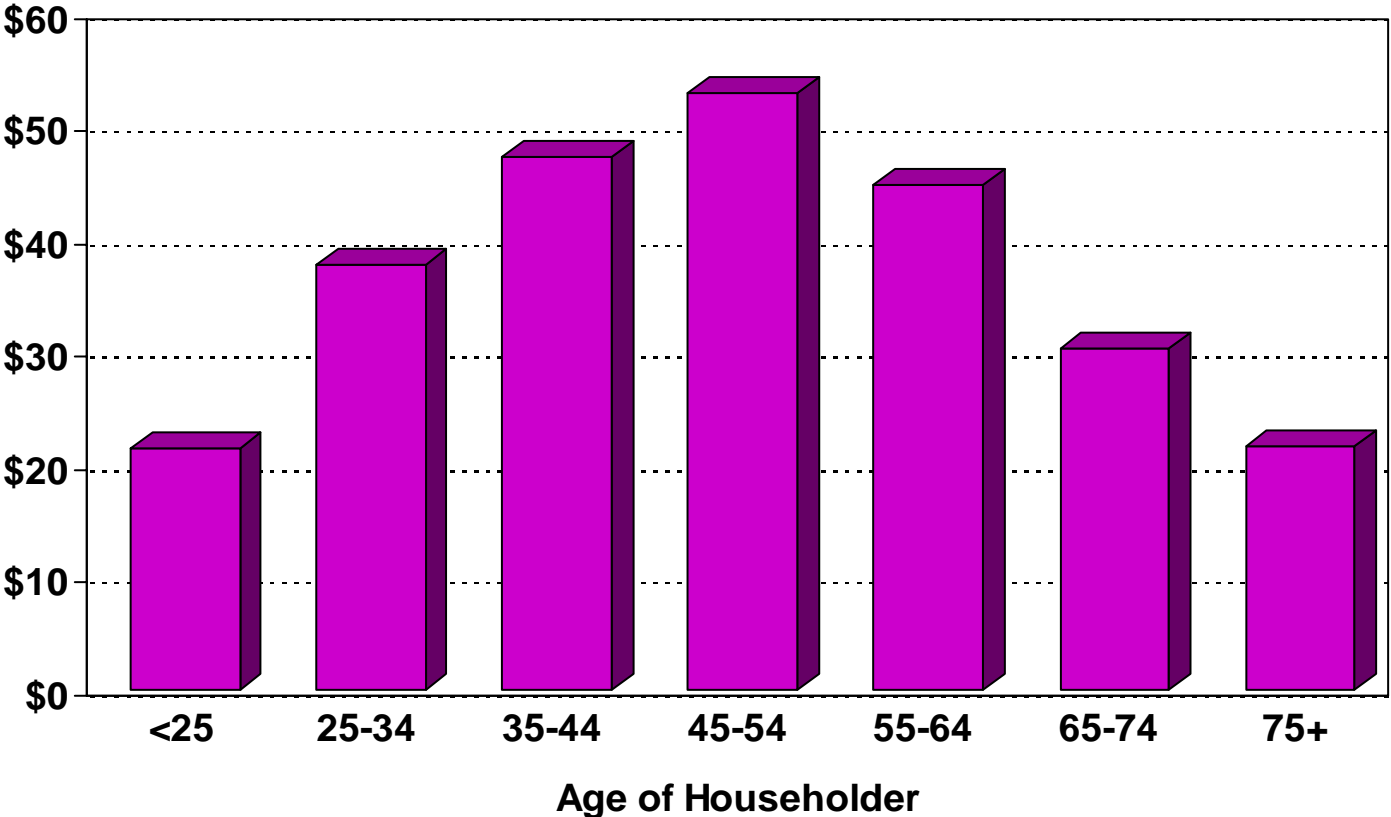
* Projections are shown for the 1.0 scenario

SOCIOECONOMIC

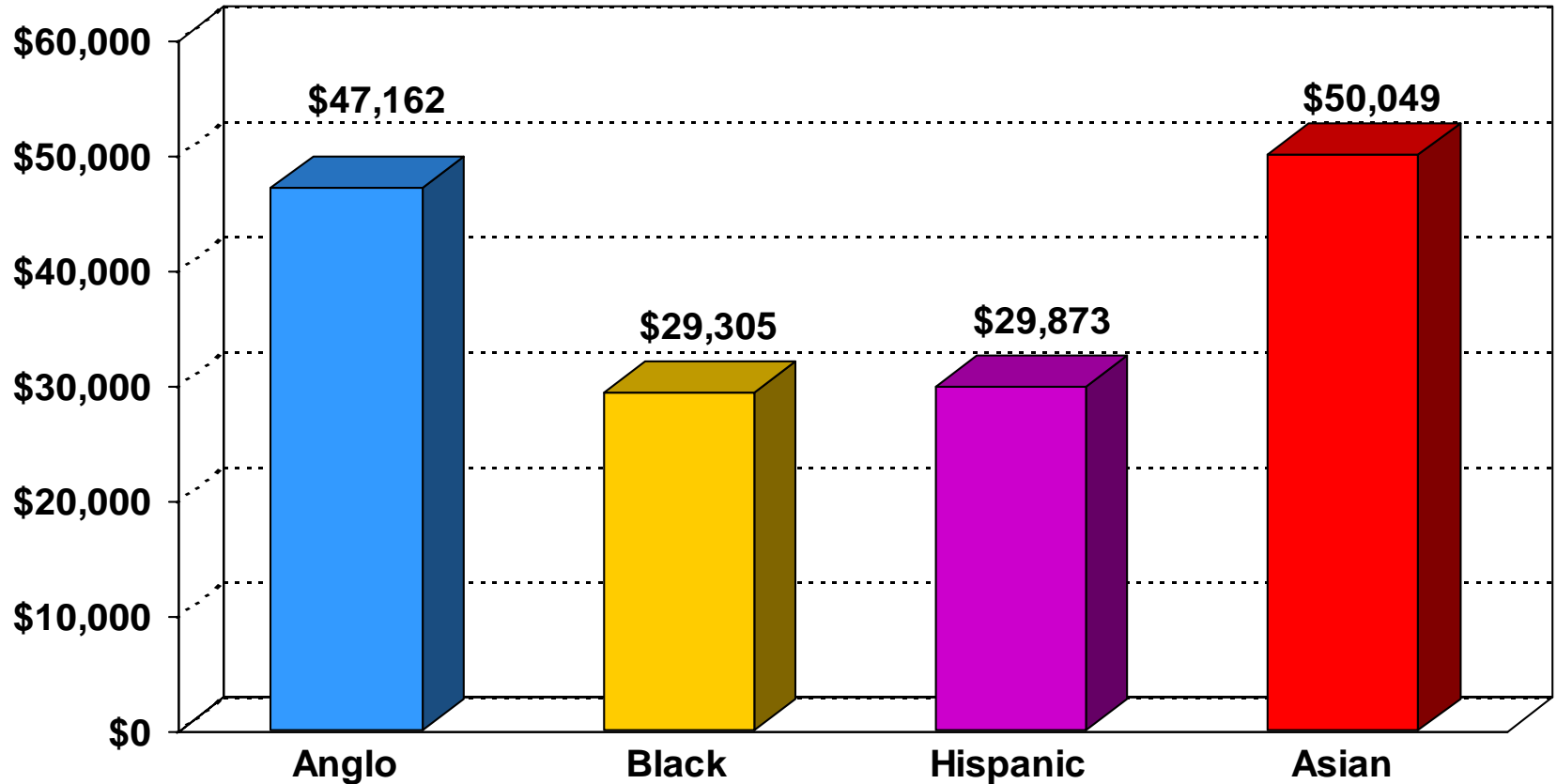


Median Household Income in 1999 in Texas by Age of Householder

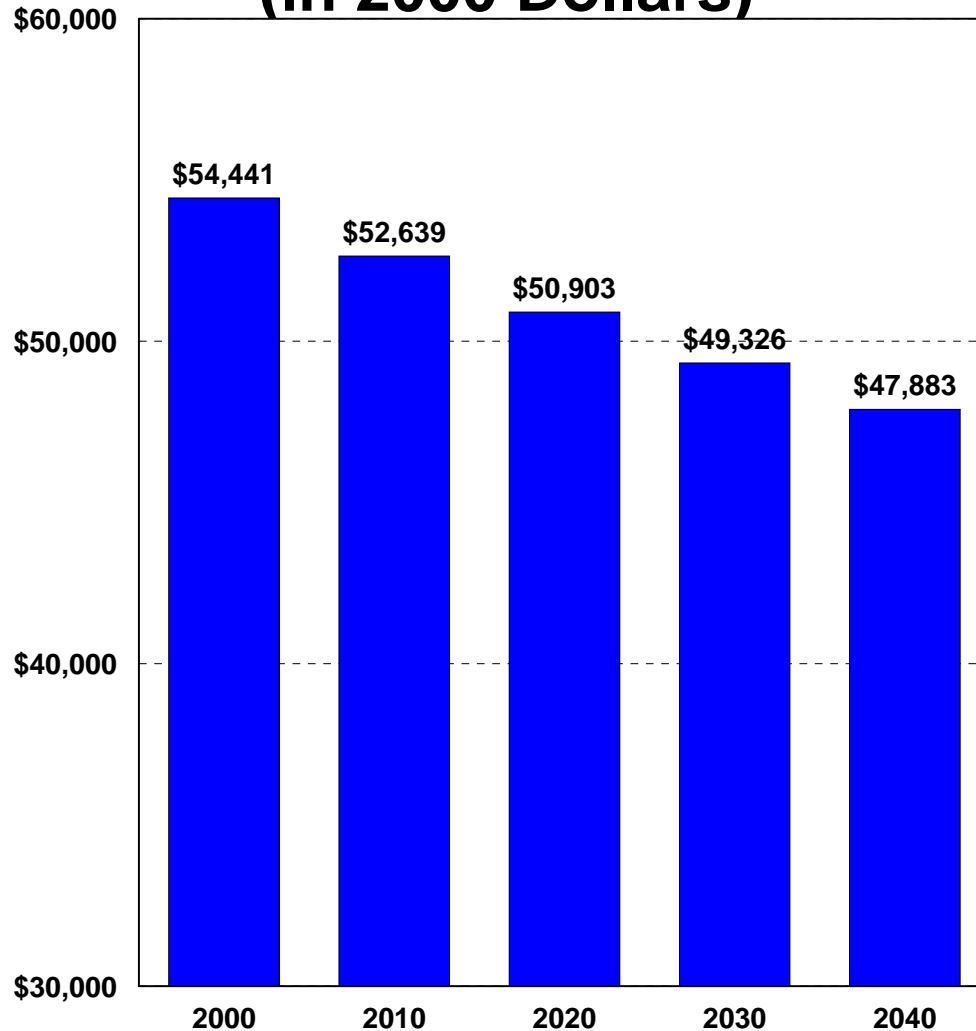
Thousands



Median Household Income In 1999 in Texas by Race/Ethnicity of Householder

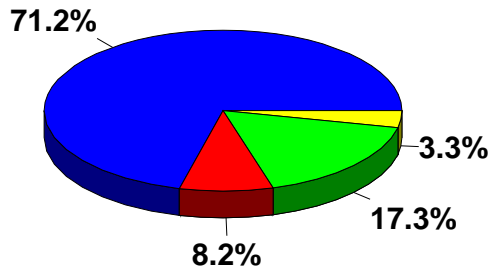


Average Household Income in Texas, 2000-2040* (in 2000 Dollars)

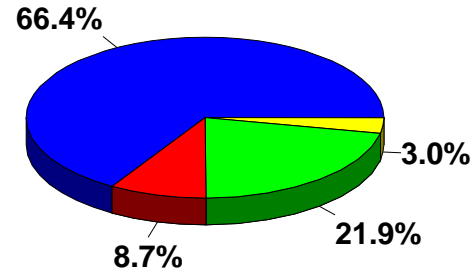


* Projections are shown for the 1.0 scenario

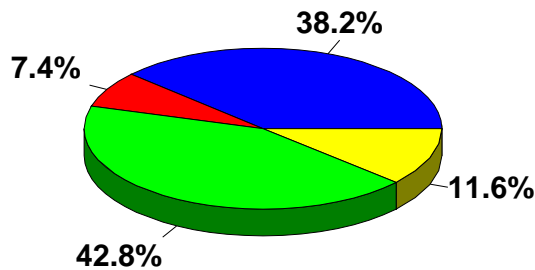
Ethnic Diversity of Household Income and Consumer Expenditures in Texas, 2000 and 2040*



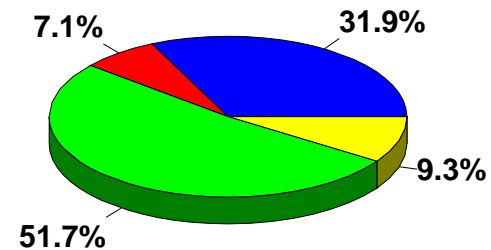
2000 Aggregate Household Income



2000 Consumer Expenditures



2040 Aggregate Household Income



2040 Consumer Expenditures

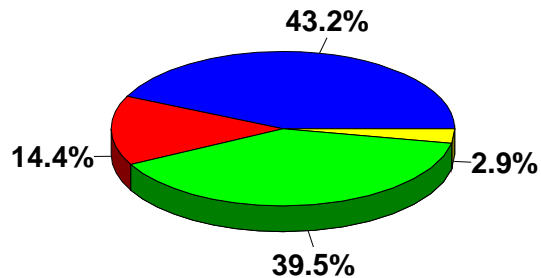


* Projections are shown for the 1.0 scenario

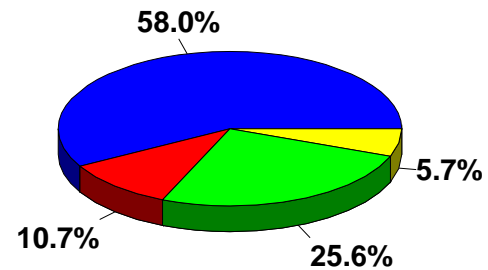
EDUCATION



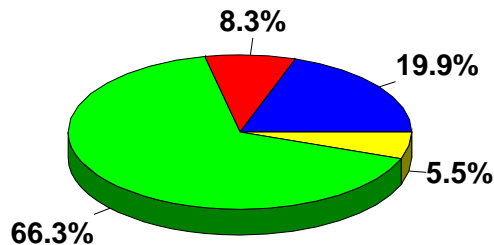
Ethnic Diversity of the Population Enrolled in Elementary and Secondary Schools and Colleges in Texas, 2000 and 2040*



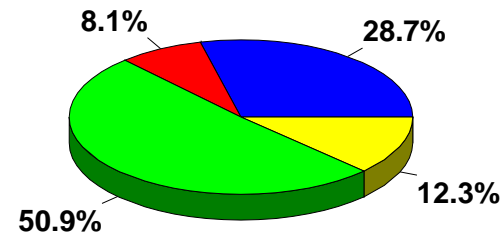
2000 Public Elementary and Secondary



2000 Public Colleges and Universities



2040 Public Elementary and Secondary

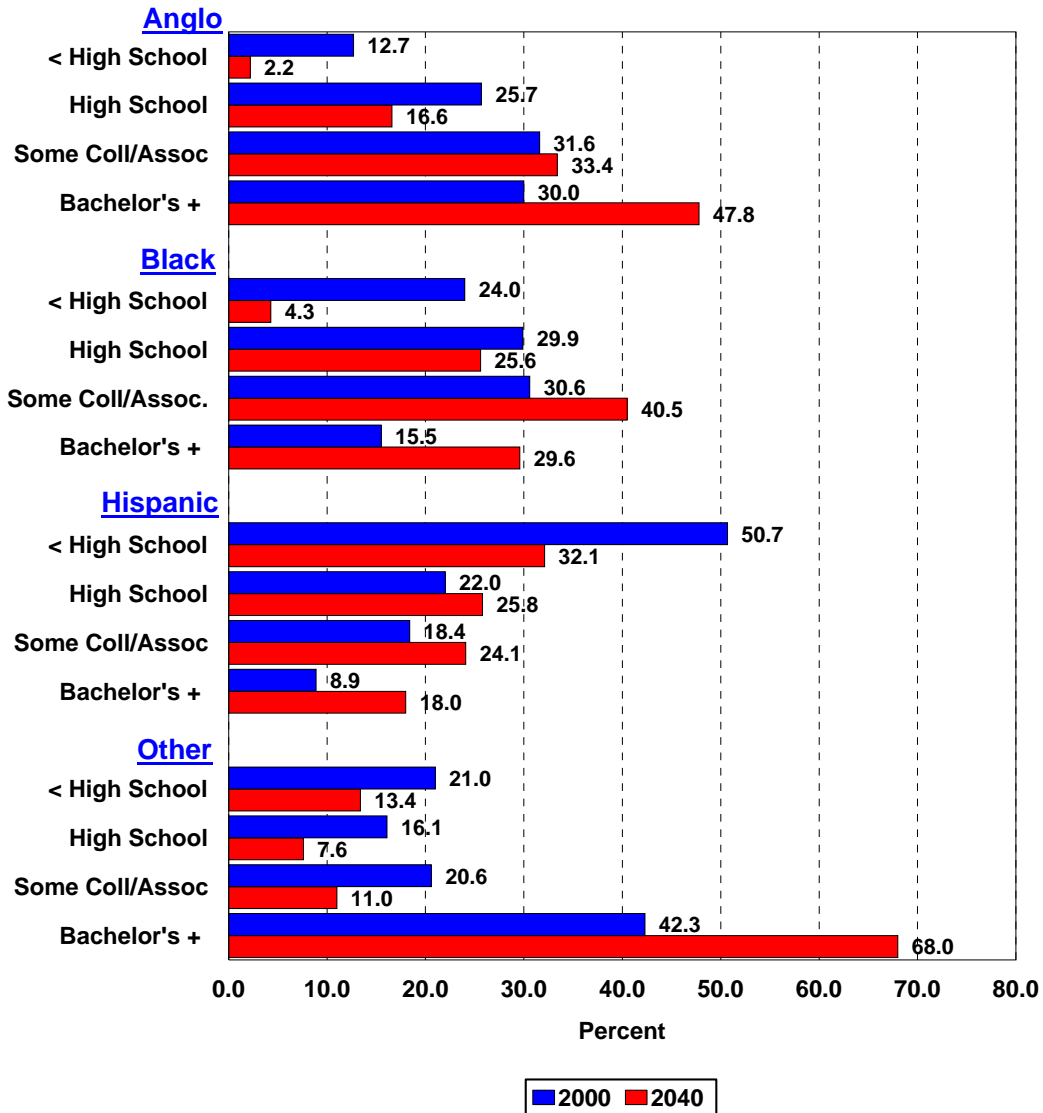


2040 Public Colleges and Universities



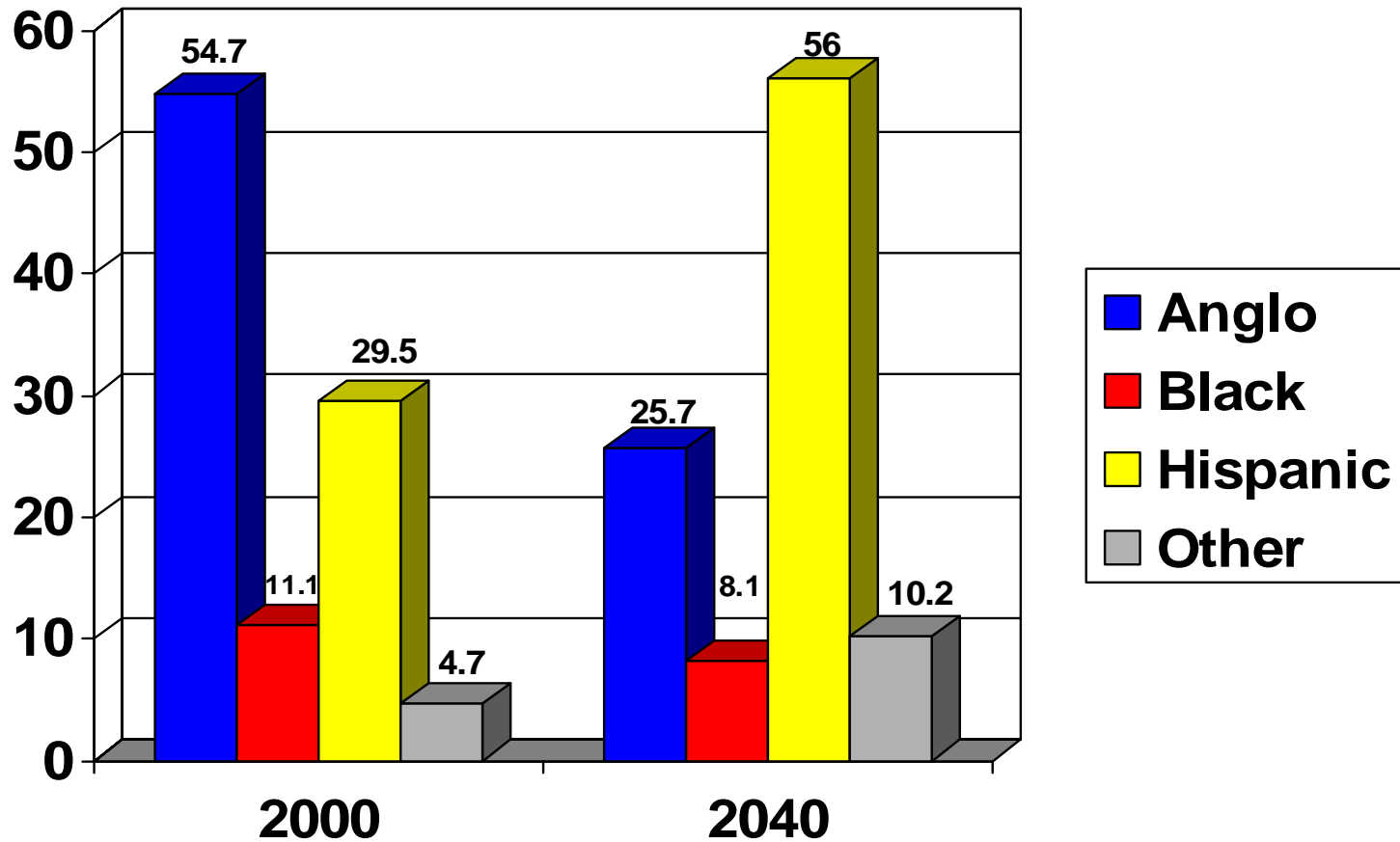
* Projections are shown for the 1.0 scenario

Percent of Persons 25 Years of Age or Older by Level of Educational Attainment and Race/Ethnicity in 2000 and Projected to 2040* Assuming 1990-2000 Trends in Educational Attainment Rates

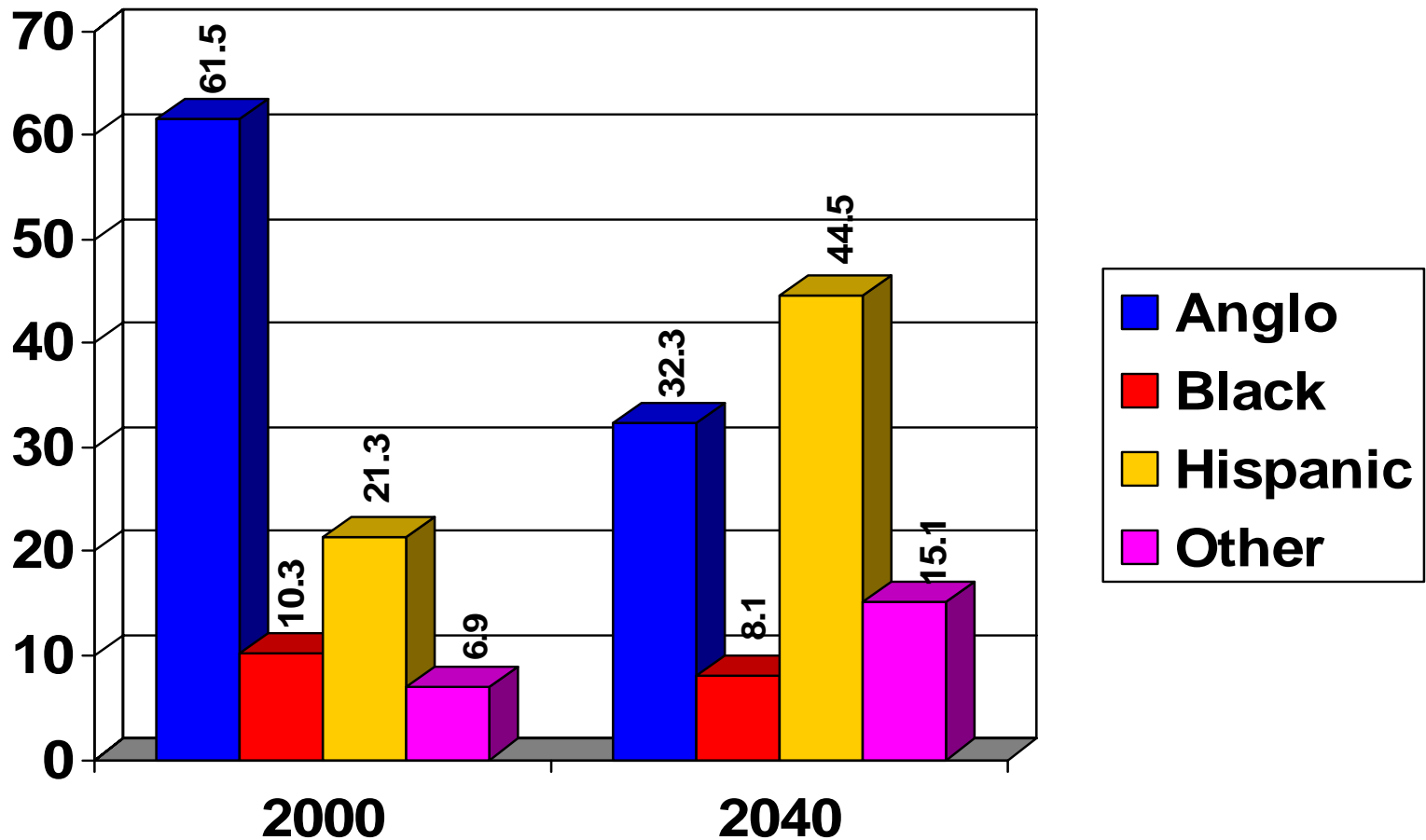


*Projections are shown for the 1.0 scenario

Projected Percent of Public Community College Enrollment by Race/Ethnicity in 2000 and Projections for 2040



Projected Percent of Public University Enrollment by Race/Ethnicity in 2000 and Projections for 2040



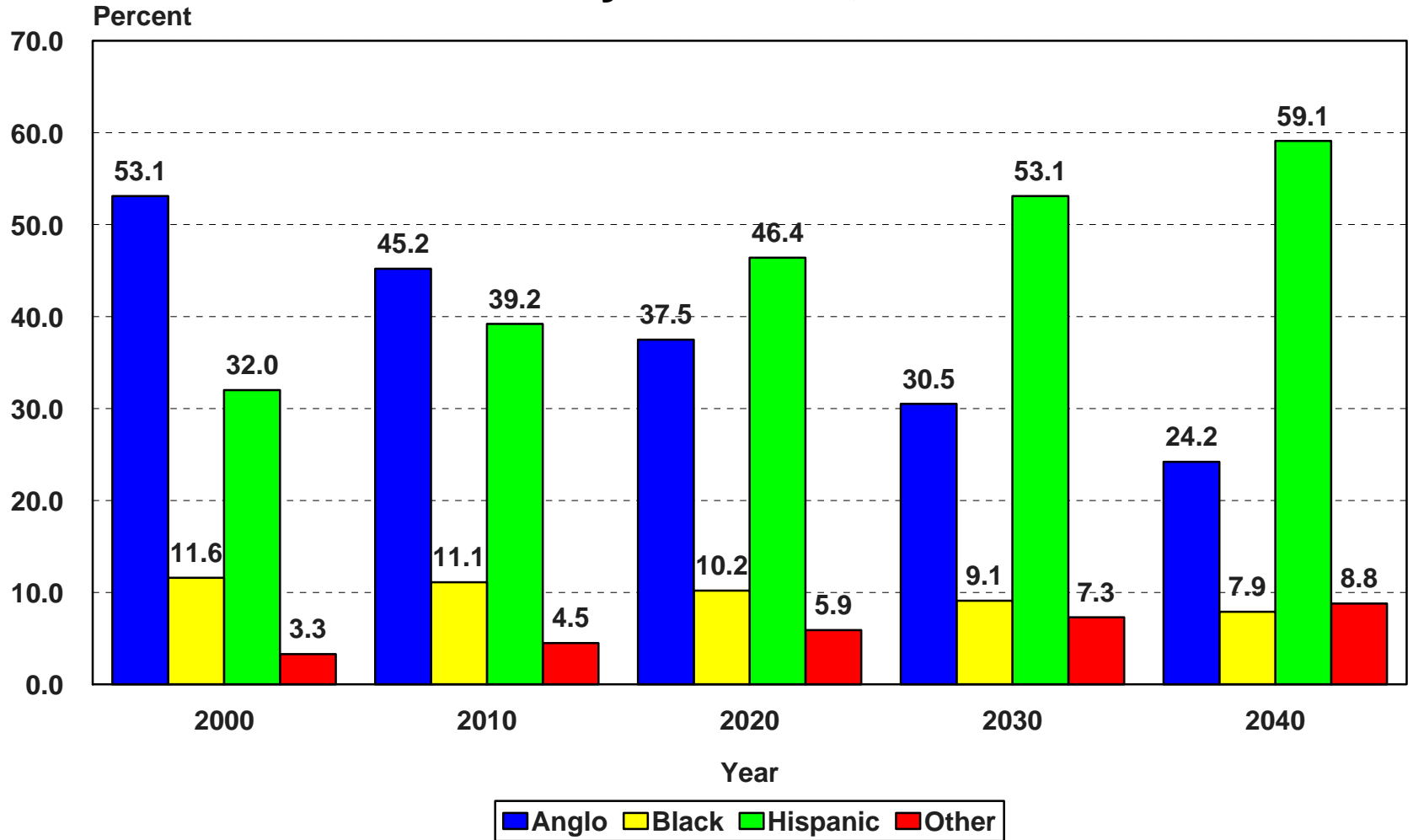
The Impact: Texas Ranked

- Median Household Income - \$39,927
 - Texas ranked 30th
- Per Capita Income - \$19,617
 - Texas ranked 33rd
- Percent High School Graduates – 75.7%
 - Texas ranked 45th
- Percent College Graduates+ - 23.2%
 - Texas ranked 27

PROJECTIONS

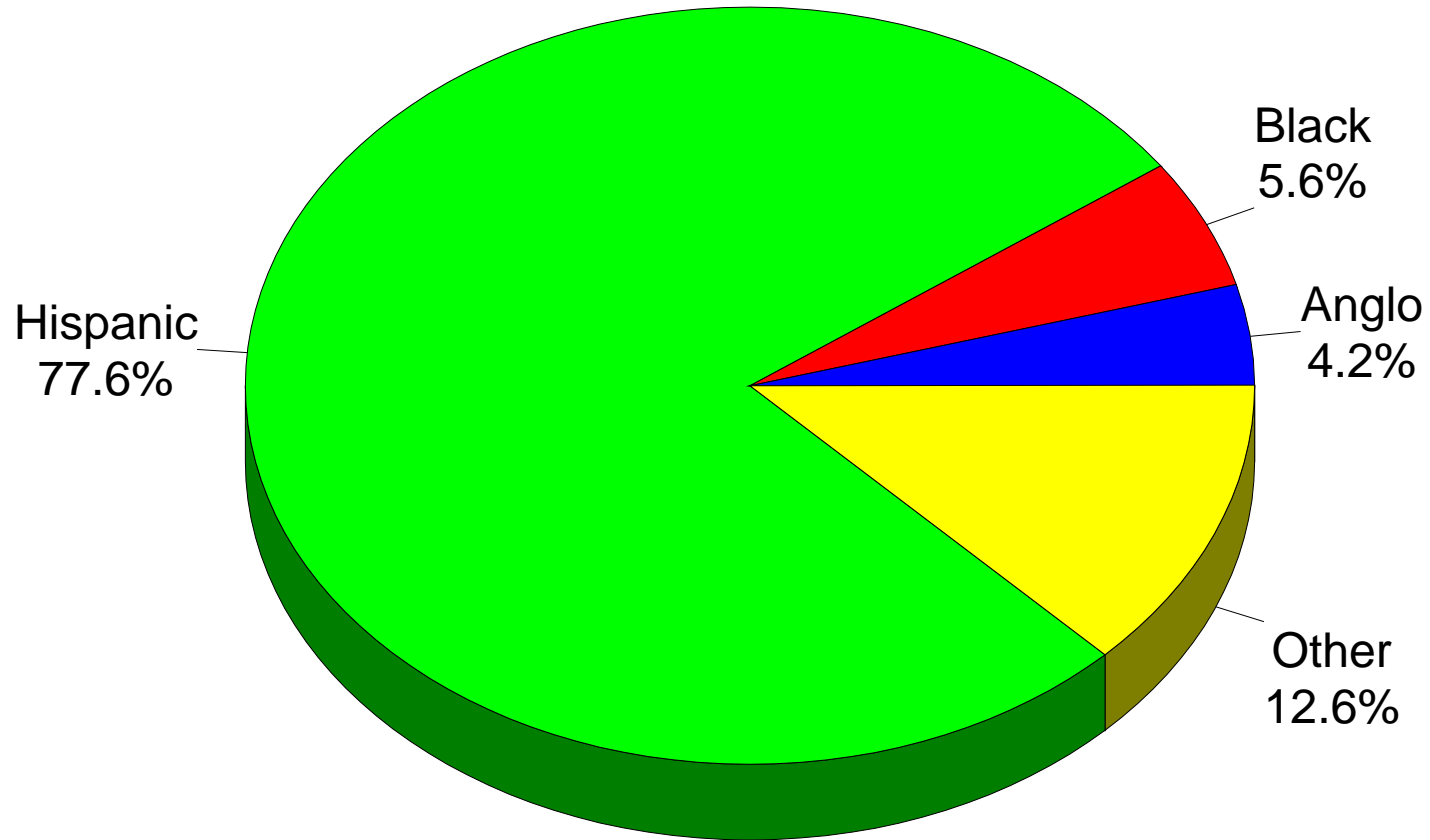


Projected Proportion of Population by Race/Ethnicity in Texas, 2000-2040*



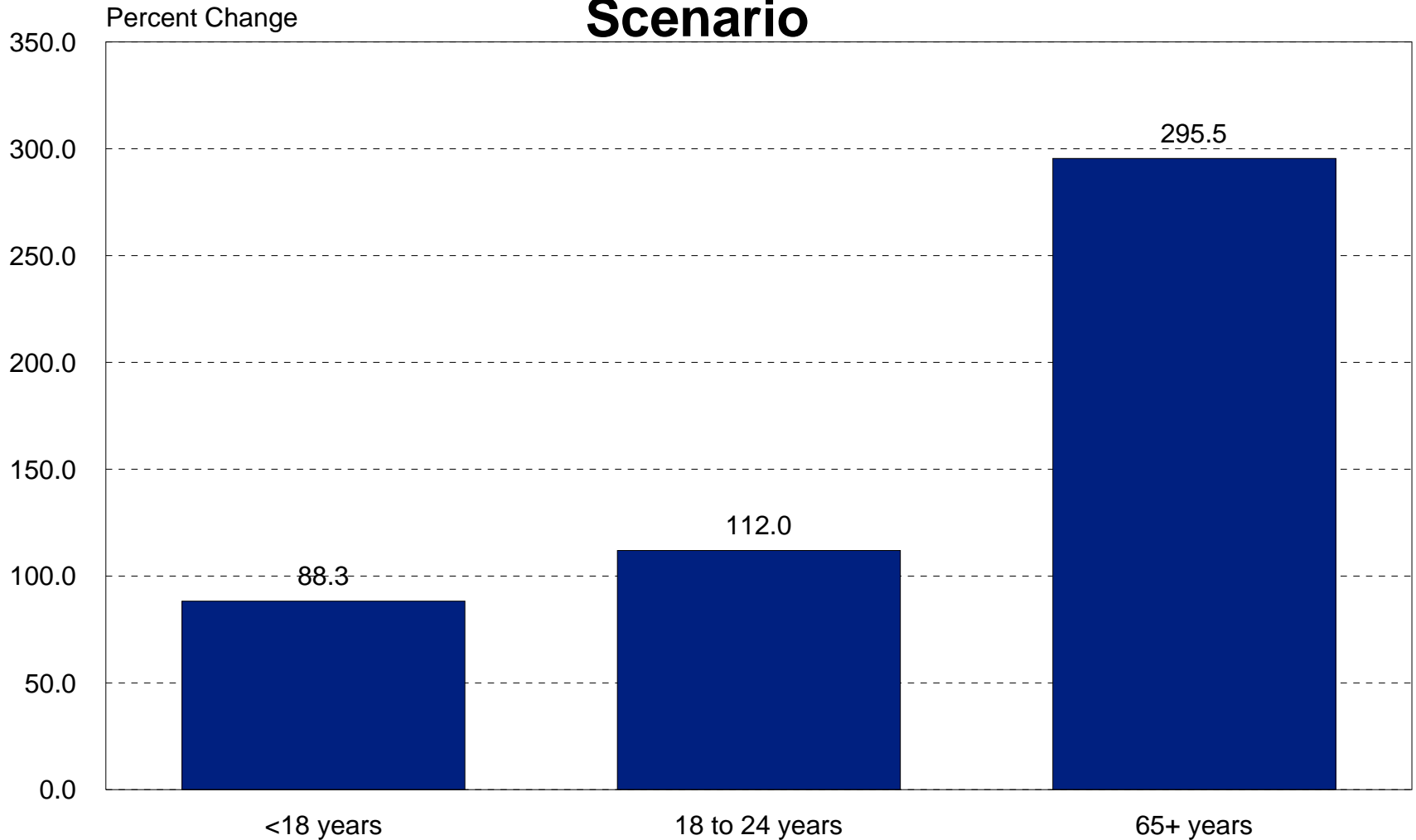
* Using U.S. Census count for 2000 and Texas State Data Center 1.0 population projection scenario for 2010-2040

Projected Percent of Net Change Attributable to Each Race/Ethnicity Group for 2000-2040*



*Using U.S. Census count for 2000 and Texas State Data Center 1.0 population projection scenario for 2040.

Percent Change from 2000 to 2040 in Selected Age Groups in the Texas Population Under the 1.0 Scenario



THE FUTURE?

- Increase in minority workforce
- Increase in elderly households
- Increase in second and third generation Latinos
- Increase of proportion of the labor force without high school education
- Decrease in proportion of labor force with college or professional degrees.

Muchas Gracias

Cruz C. Torres

Phone 979 - 845 - 8522

e-mail ctorres@tamu.edu

<http://www.rpts.tamu.edu/RuralSoc/presentations.htm>