

# Hispanic Demographic Growth in Texas

by  
**Cruz C. Torres**

**Recreation, Parks, & Tourism Sciences**  
**Rural Sociology & Community Studies**  
**Texas A&M University**  
**March 31, 2005**

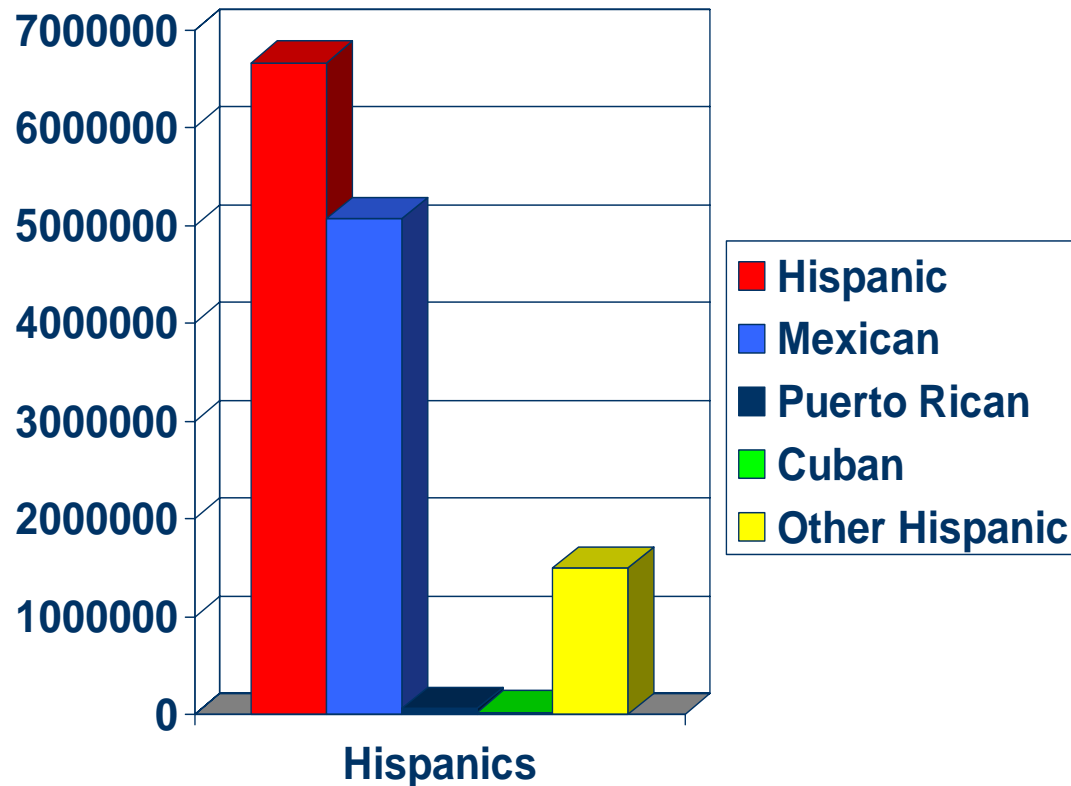
# Major Demographic Trends Affecting the Future

- **Change in Rates and Sources of Population Growth**
- **Increase in the Non-Anglo Population**
- **Aging of the Population**
- **Change in Household Composition**
- **And Latinos are central to all these major trends!!!**

# Texas Hispanics in 2000 :

## Historical Roots

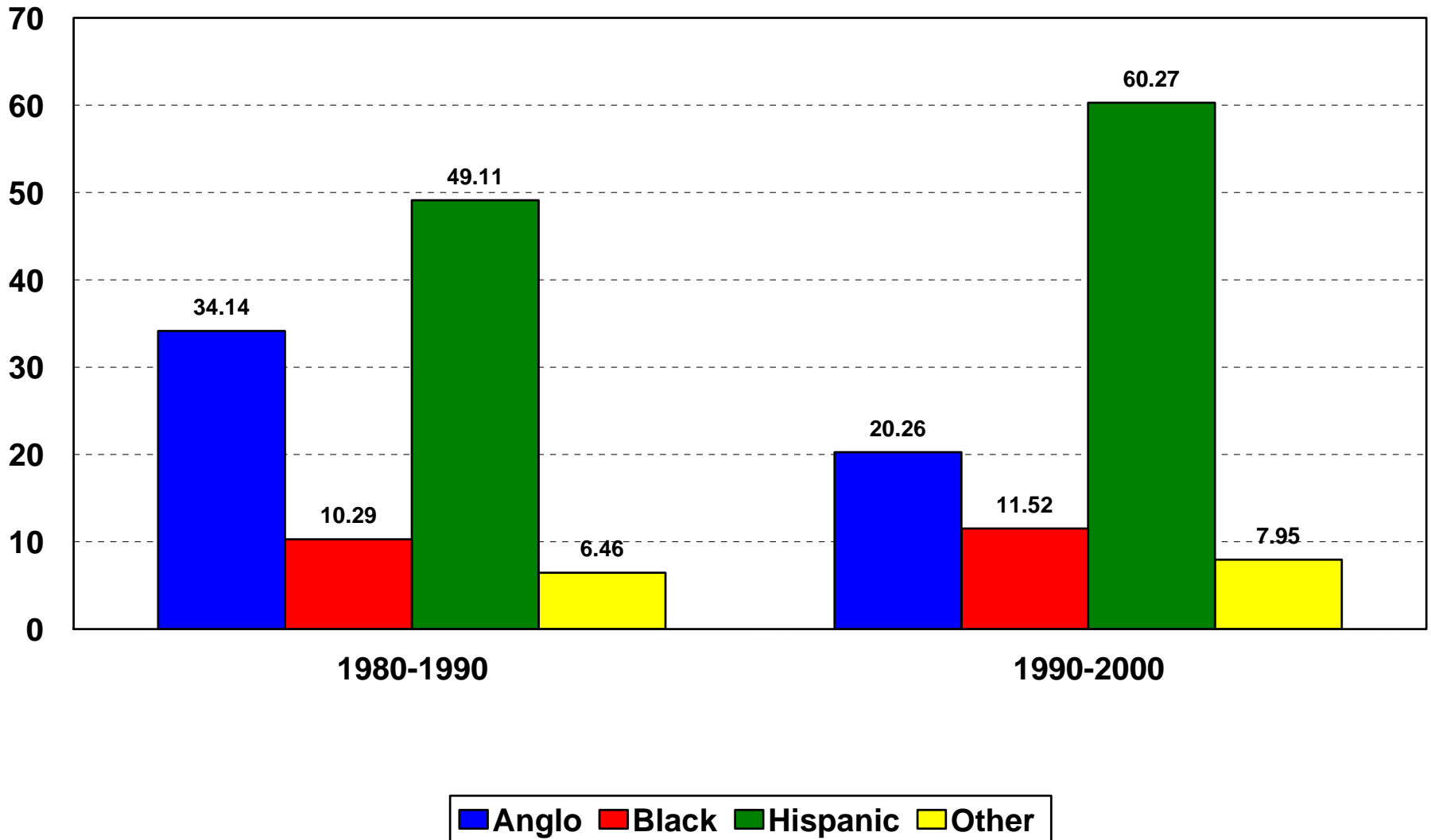
- Hispanics = 6,669,666
  - 32 % of Texas population
- Mexican > 5,071,963
- Puerto Rican > 69,504
- Cuban > 25,705
- Other Hispanic > 1,502,494



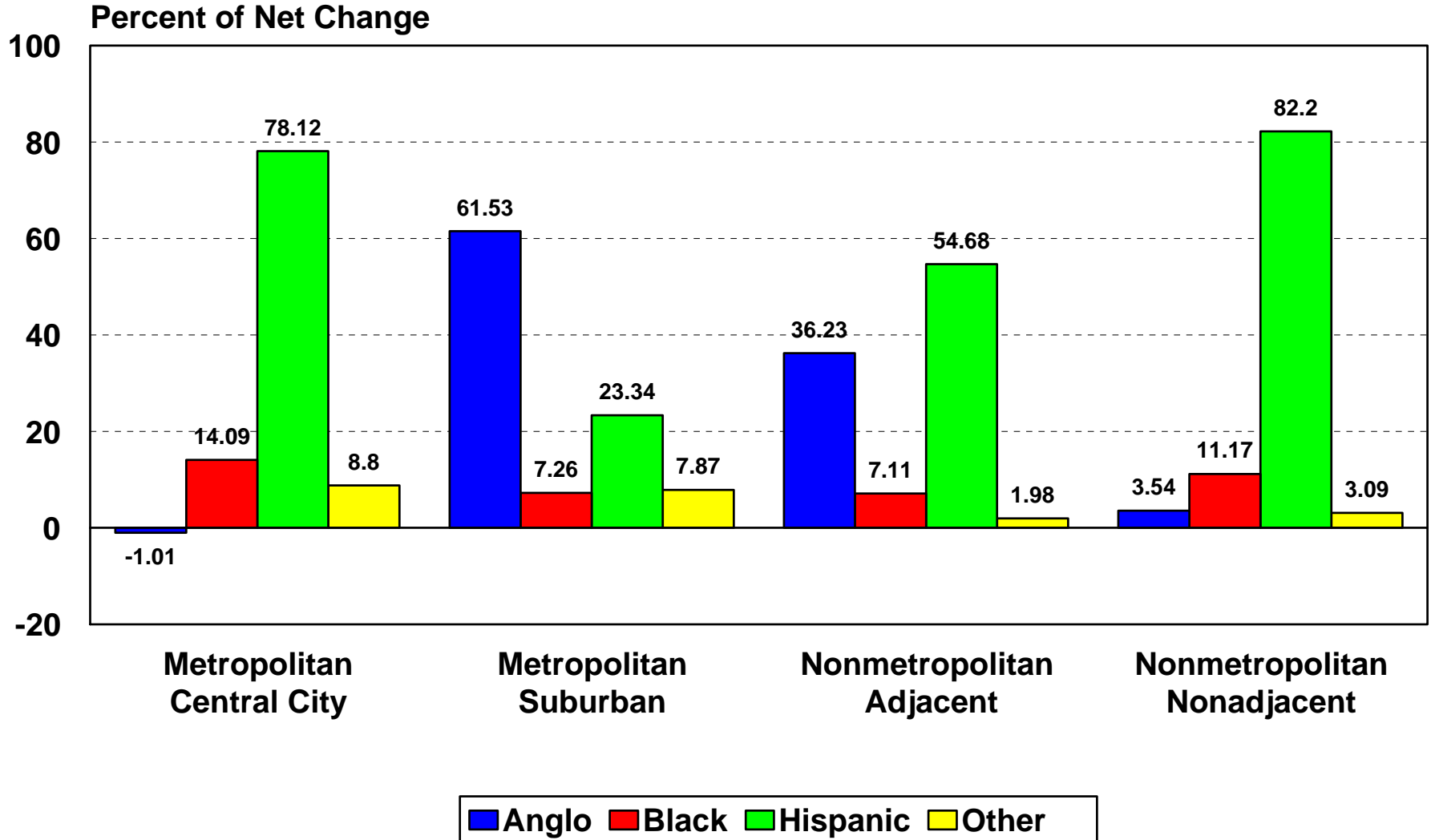
# Where did we come from?

- Differences in nativity
  - 68.1 percent native-born
  - 31.9 percent foreign born
- Hispanic in-migration to Texas between 1995-2001 totaled 671,533
  - 32% of migrants to Texas were Hispanic – of these:
    - 33.3% (224,082) are out-of-state migrants
    - 66.6% (447,451) are migrants from abroad

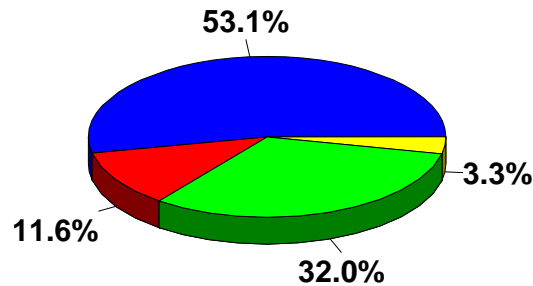
# Proportion of Net Population Change Attributable to Each Race/Ethnicity Group in Texas for 1980-1990 and 1990-2000



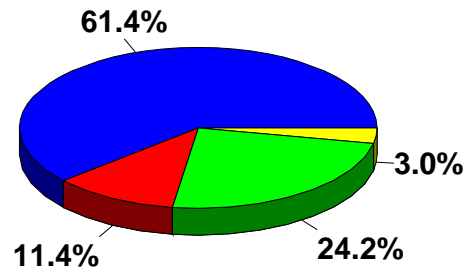
# Proportion of Net Population Change from 1990 to 2000 Attributable to Each Racial/Ethnic Group by Each Metropolitan Status Type in Texas



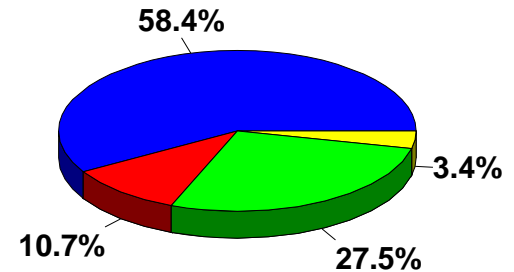
# Ethnic Diversity of the Population, Householders, and Labor Force in Texas, 2000 and 2040\*



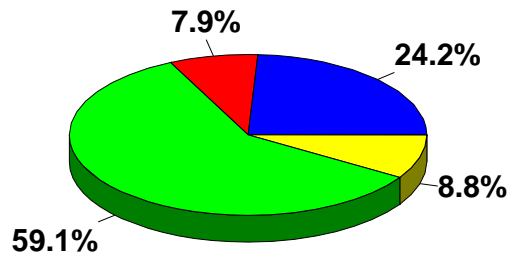
2000 Population



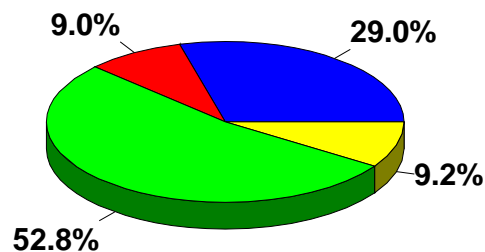
2000 Householders



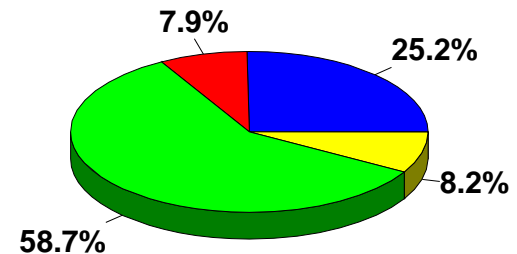
2000 Civilian Labor Force



2040 Population



2040 Householders

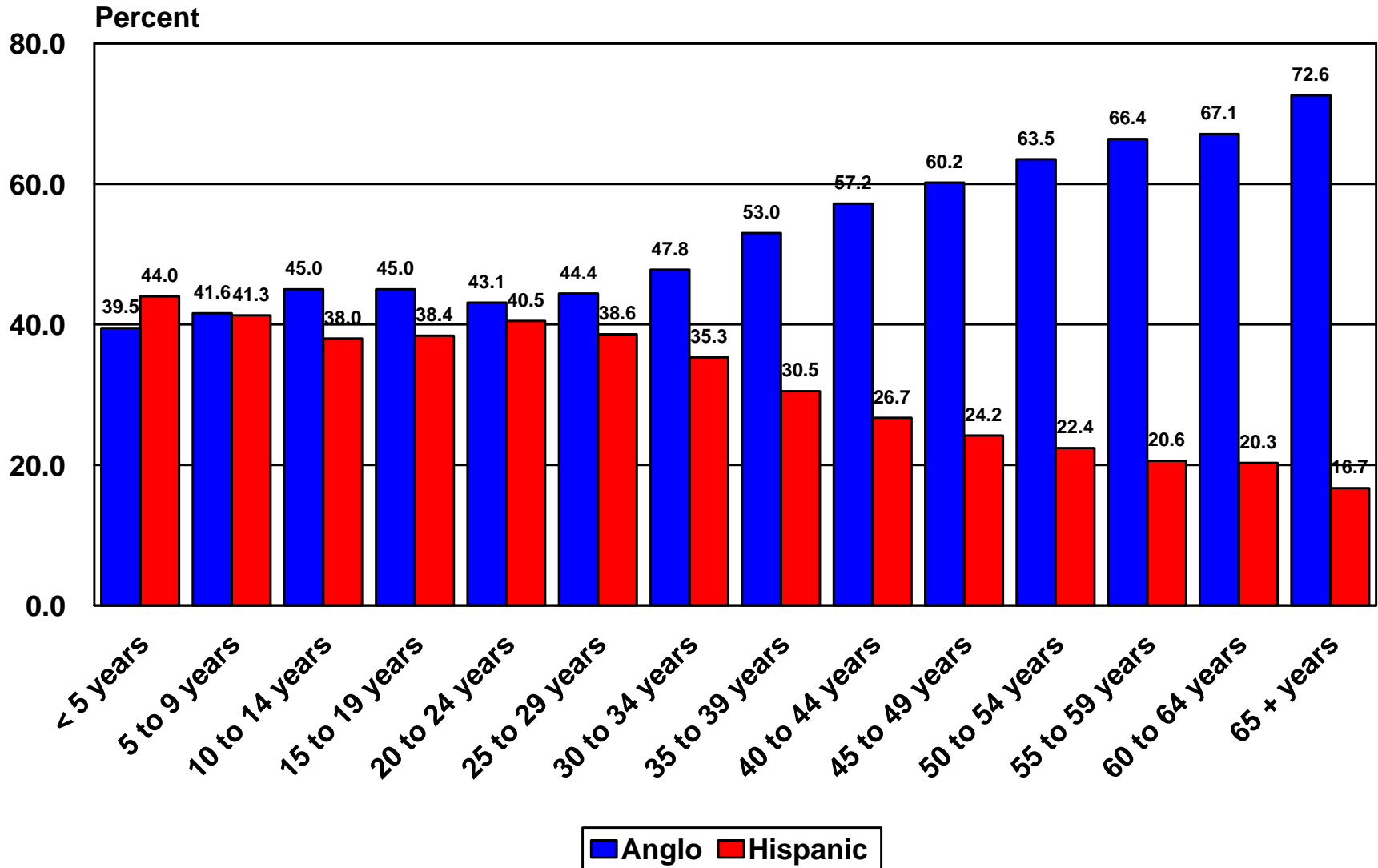


2040 Civilian Labor Force



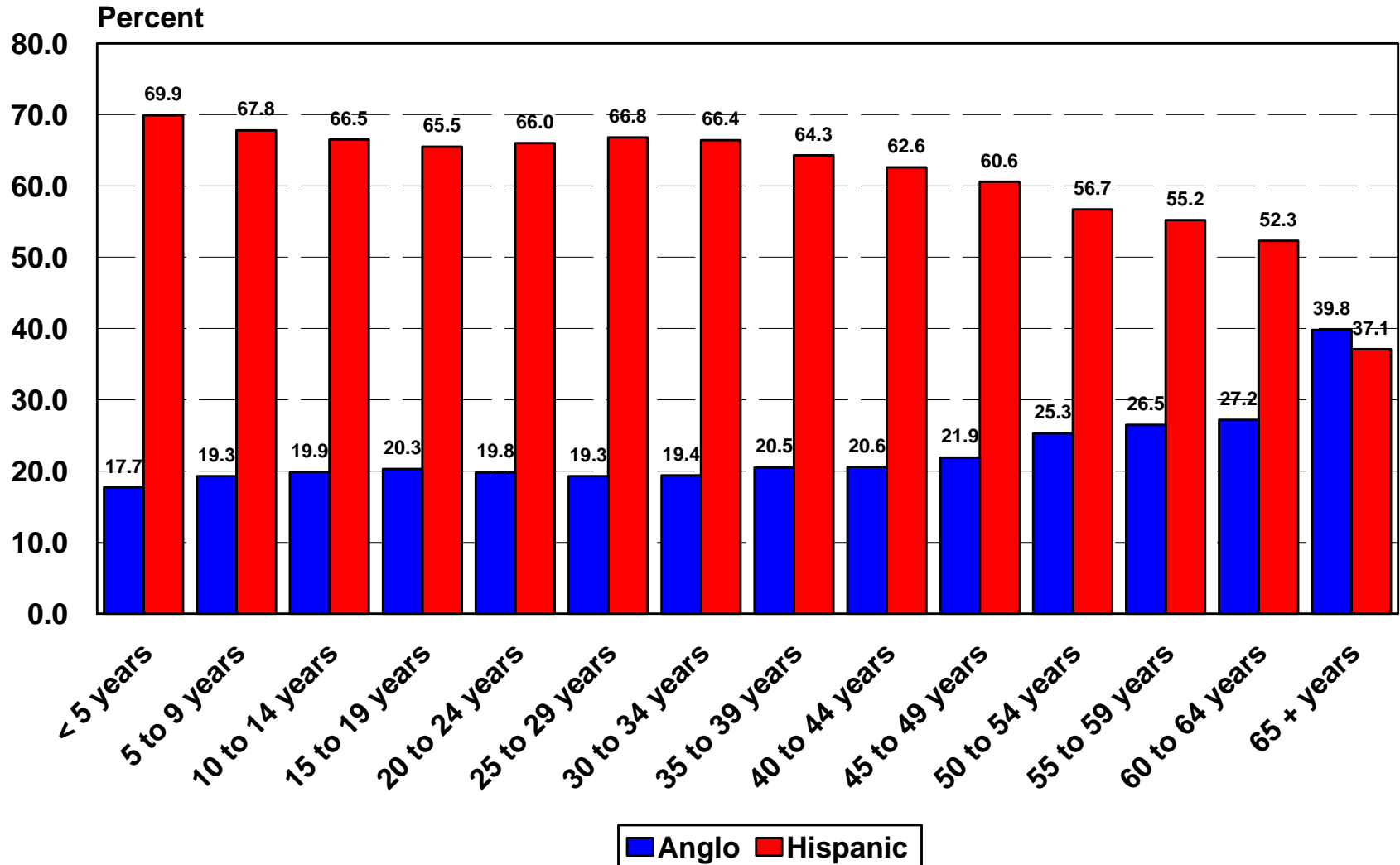
\* Projections are shown for the 1.0 scenario

# Percent of Texas Population by Age Group and Ethnicity, 2000





# Percent of Texas Population by Age Group and Ethnicity, 2040\*



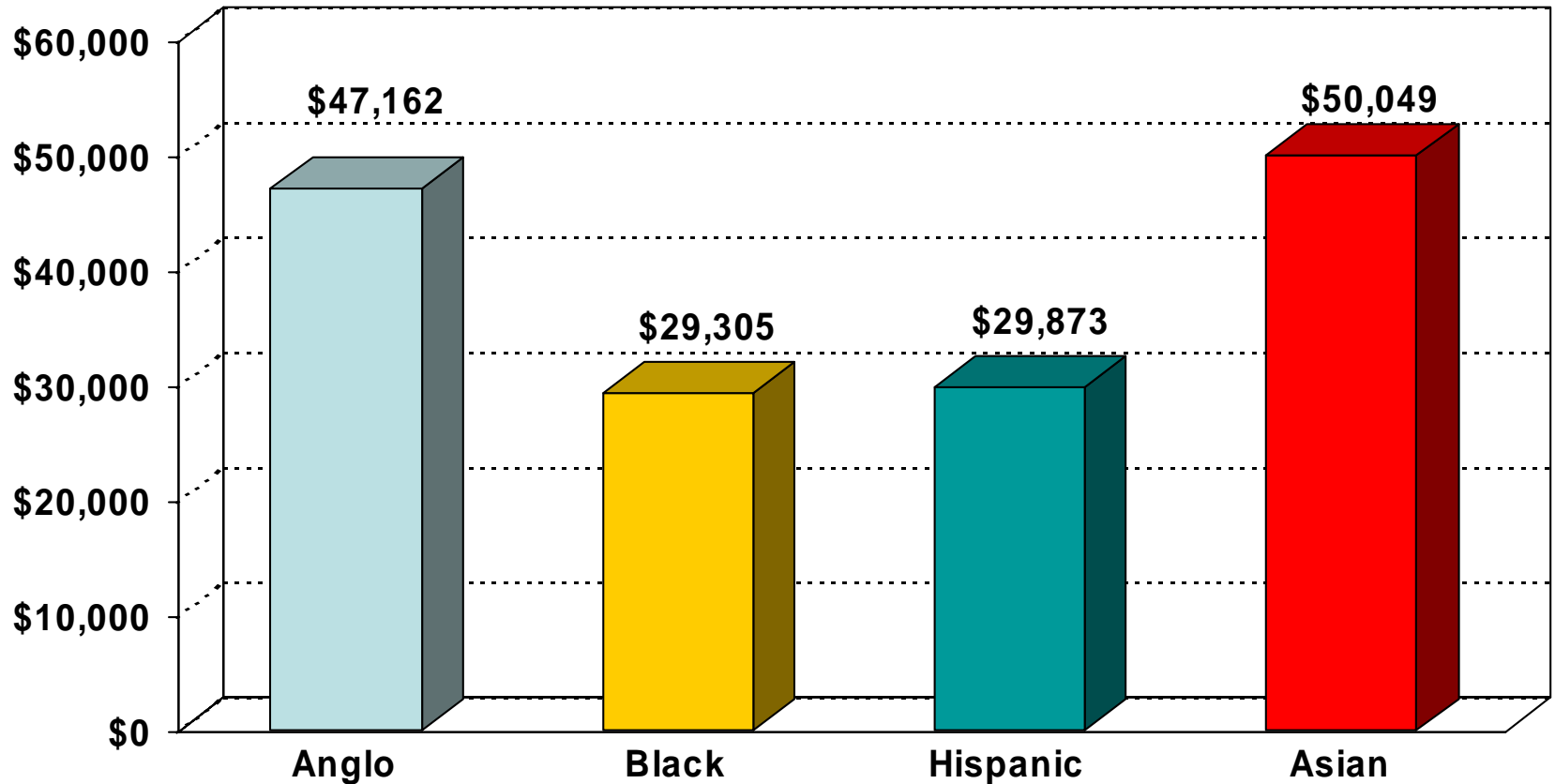
\* Projections are shown for the 1.0 scenario

# Implications of Youthful Population

---

- Higher fertility rates
- Greater demand for employment opportunities
- Greater demand on educational services
- Greater demand for housing stock
- Lower economic status

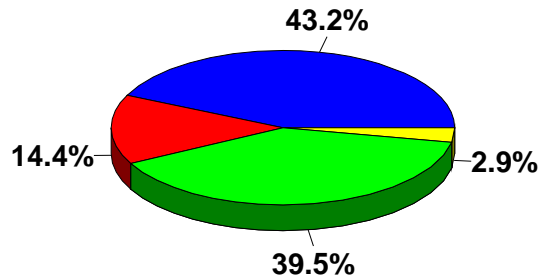
# Median Household Income In 1999 in Texas by Race/Ethnicity of Householder



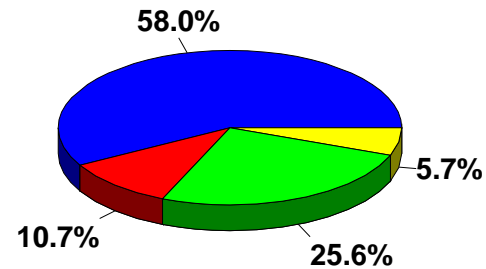
# Latino Economic Profile: Poverty

- 22.8% of Latino families below poverty level
  - Non-Hispanic white 5.2%
- 25.4% of Latino individuals below poverty
  - Non-Hispanic whites 7.8%
- 25.7% of Latino Elderly below poverty level
  - Non-Hispanic whites 8.0%
- 31.2% of Latino Children below poverty level
  - Non-Hispanic whites 8.3%

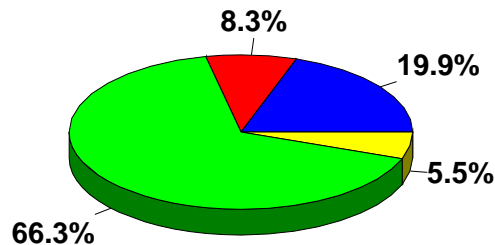
# Ethnic Diversity of the Population Enrolled in Elementary and Secondary Schools and Colleges in Texas, 2000 and 2040\*



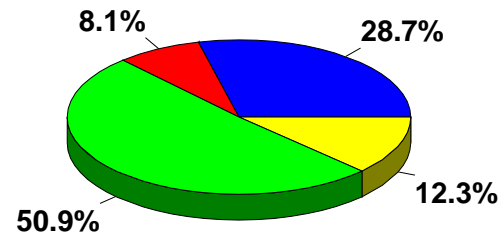
2000 Public Elementary and Secondary



2000 Public Colleges and Universities



2040 Public Elementary and Secondary

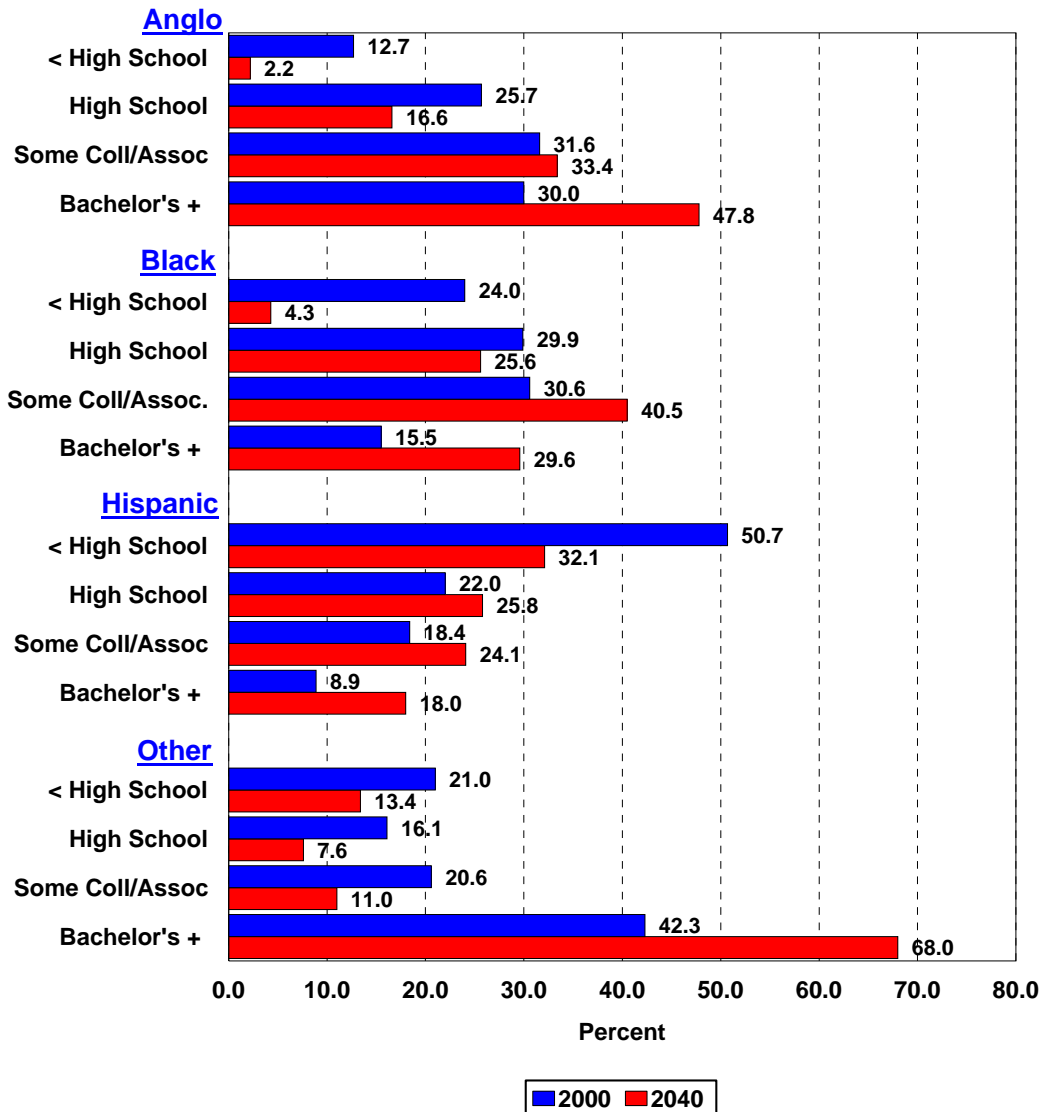


2040 Public Colleges and Universities



\* Projections are shown for the 1.0 scenario

# Percent of Persons 25 Years of Age or Older by Level of Educational Attainment and Race/Ethnicity in 2000 and Projected to 2040\* Assuming 1990-2000 Trends in Educational Attainment Rates



\*Projections are shown for the 1.0 scenario

# What does all these mean ?

---

- Latinos will play a central role in the future of Texas **BUT**
- Many of the factors associated with “healthy Hispanic state of the state” are associated with social capital **AND**
- Latinos will need to acquire additional social and human capital to fully contribute to Texas prosperity

**As a member of the Texas Hispanic community**

**--- mi casa es su casa!**

**Muchas Gracias**

**Phone      979 - 845 - 8522**  
**e-mail    ctorres@tamu.edu**