

Changing Demographics: Impact on Texas Higher Education

by
Cruz C. Torres

**Rural Sociology and Community Studies
Texas A&M University**

July 13, 2005

Major Demographic Trends Affecting the Future

- **Change in Rates and Sources of Population Growth**
- **Increase in the Non-Anglo Population**
- **Aging of the Population**

Total Population Change



Total Population and Percent Population Change in Texas and the United States, 1850-2004

Year*	Total Population		Percent Change	
	Texas	U.S.	Texas	U.S.
1850	212,592	23,191,876	---	---
1860	604,215	31,443,321	184.2	35.6
1870	818,579	39,818,449	35.5	26.6
1880	1,591,749	50,155,783	94.5	26.0
1890	2,235,527	62,947,714	40.4	25.5
1900	3,048,710	75,994,575	36.4	20.7
1910	3,896,542	91,972,266	27.8	21.0
1920	4,663,228	105,710,620	19.7	14.9
1930	5,824,715	122,775,046	24.9	16.1
1940	6,414,824	131,669,275	10.1	7.2
1950	7,711,194	150,697,361	20.2	14.5
1960	9,579,677	179,323,175	24.2	19.0
1970	11,196,730	203,302,031	16.9	13.4
1980	14,229,191	226,545,805	27.1	11.4
1990	16,986,510	248,709,873	19.4	9.8
2000	20,851,820	281,421,906	22.8	13.2
2004	22,490,022	293,655,404	7.9	4.3

* All values for the decennial dates are for the indicated census year. Values for 2004 are as estimated by the U.S. Bureau of the Census.

Source: Derived from U.S. Bureau of the Census Estimates for dates indicated by the Texas State Data Center, University of Texas at San Antonio

Total Population and Components of Population Change in Texas, 1950-2004

Year*	Population	Numerical Change	Natural Increase	Net Migration	Percent Change	Percent Change Due to	
						Natural Increase	Net Migration
1950	7,711,194	—	—	—	—	—	—
1960	9,579,677	1,868,483	1,754,652	113,831	24.23	93.91	6.09
1970	11,196,730	1,617,053	1,402,683	214,370	16.88	86.74	13.26
1980	14,229,191	3,032,461	1,260,794	1,771,667	27.08	41.58	58.42
1990	16,986,510	2,757,319	1,815,670	941,649	19.38	65.85	34.15
2000	20,851,820	3,865,310	1,919,281	1,946,029	22.76	49.65	50.35
2004	22,490,022	1,638,202	930,519	707,683	7.86	56.80	43.20

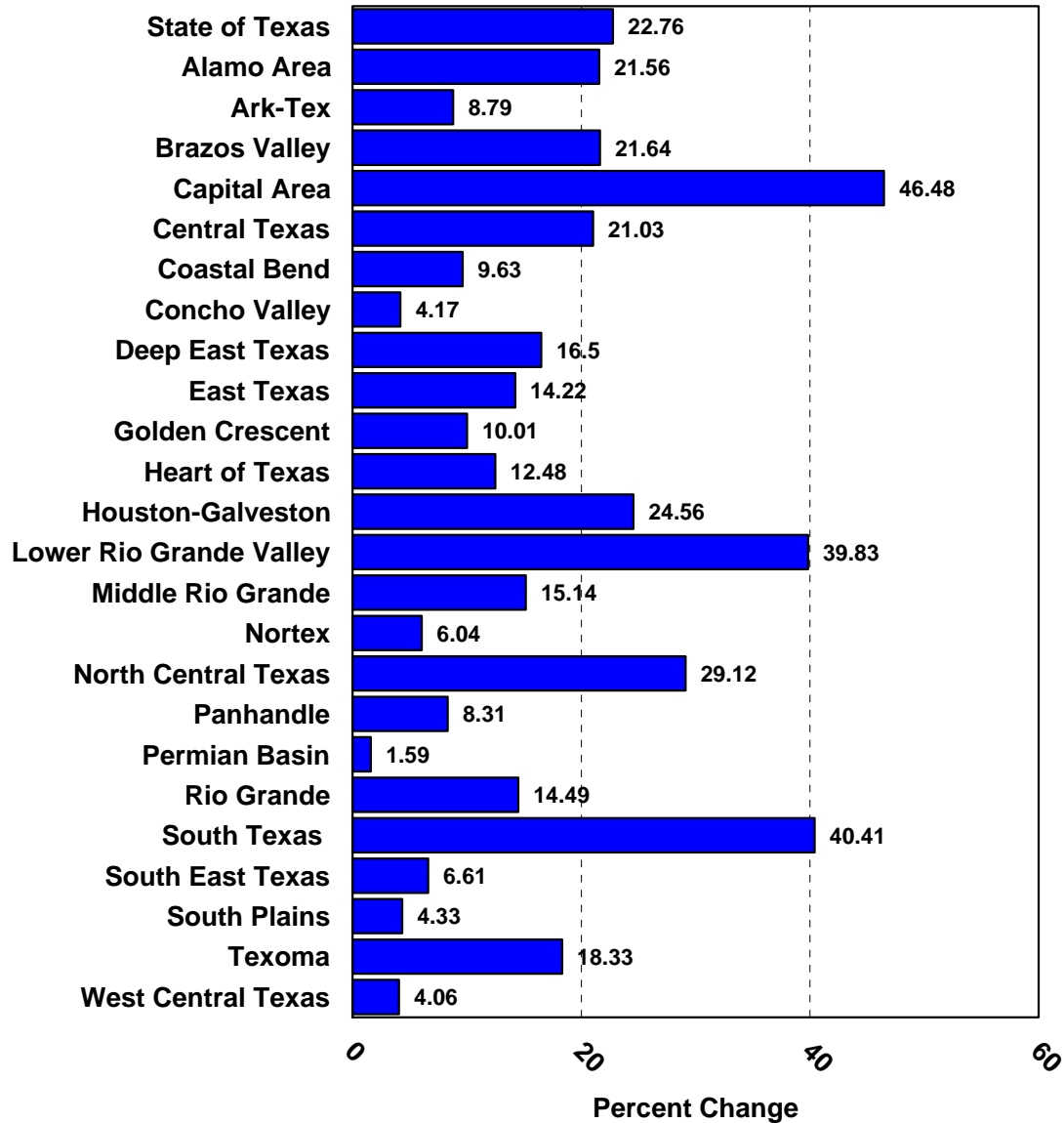
* All values for the decennial dates are for the indicated census year. Value for 2004 is as estimated by the U.S. Bureau of the Census.

Source: Derived from U.S. Bureau of the Census Estimates for dates indicated by the Texas State Data Center, University of Texas at San Antonio

Population in 1990 and 2000, Numerical and Percent Change in Population 1990 to 2000 in Metropolitan and Nonmetropolitan Areas in Texas

Metropolitan Status	Population		Change in Population	
	1990	2000	Number	Percent
Metropolitan Central City	11,615,291	13,993,705	2,378,414	20.48
Metropolitan Suburban	2,550,367	3,698,175	1,147,808	45.01
Nonmetropolitan Adjacent	1,962,353	2,234,027	271,674	13.84
Nonmetropolitan Nonadjacent	858,499	925,913	67,414	7.85

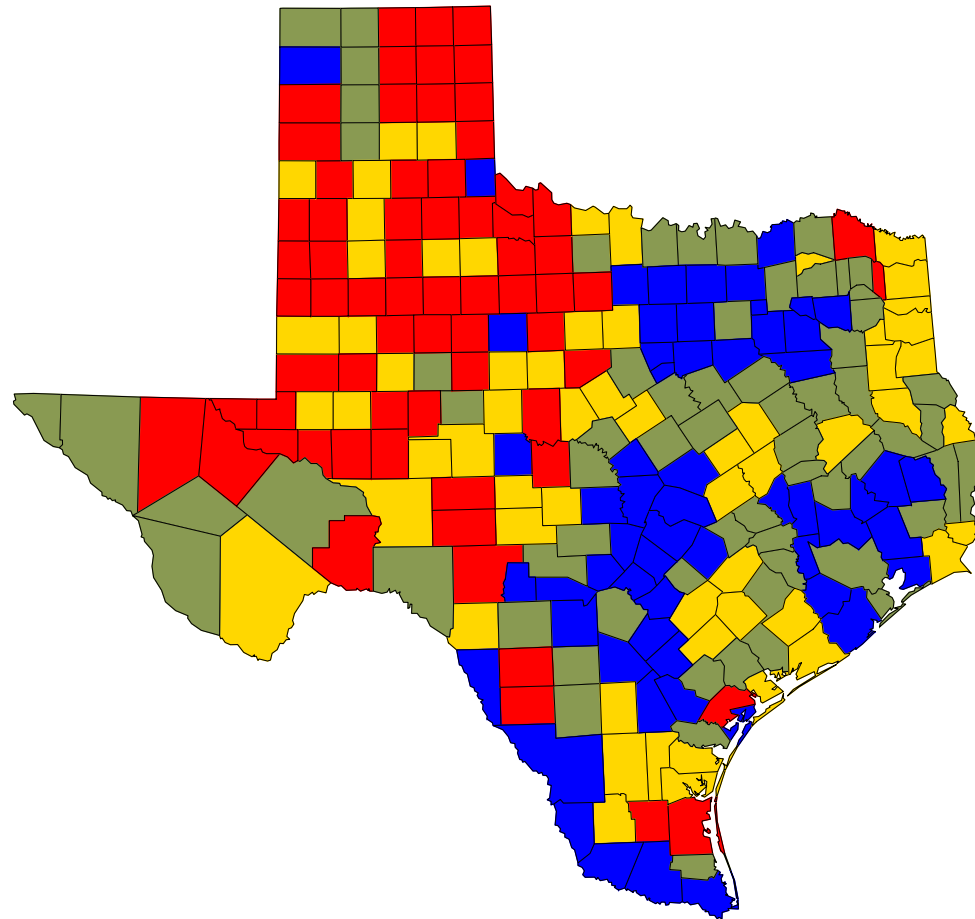
Percent Change in Population from 1990 to 2000 for Council of Government Regions in Texas



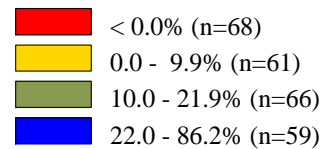
Population Change by Components of Change in the State and Selected Metropolitan Areas, 1990-2000 and 2000-2004

	State of Texas	San Antonio Metropolitan Area	Dallas - Ft. Worth- Arlington Metropolitan Area	Houston – Baytown - Sugar Land Metropolitan Area	Austin - Round Rock Metropolitan Area
<u>1990-2000</u>					
Numerical Change	3,865,485	303,958	1,172,250	948,174	403,536
Natural Increase	1,922,044	150,894	505,595	500,630	112,314
Domestic Migration	1,166,570	111,518	472,931	210,530	260,833
International Migration	776,871	41,546	193,724	237,014	30,389
<u>2000-2004</u>					
Numerical Change	1,638,202	142,347	538,712	465,036	162,508
Natural Increase	930,519	70,302	267,470	238,579	66,852
Domestic Migration	149,679	49,934	74,881	49,000	55,700
International Migration	558,004	22,111	196,361	177,457	39,956

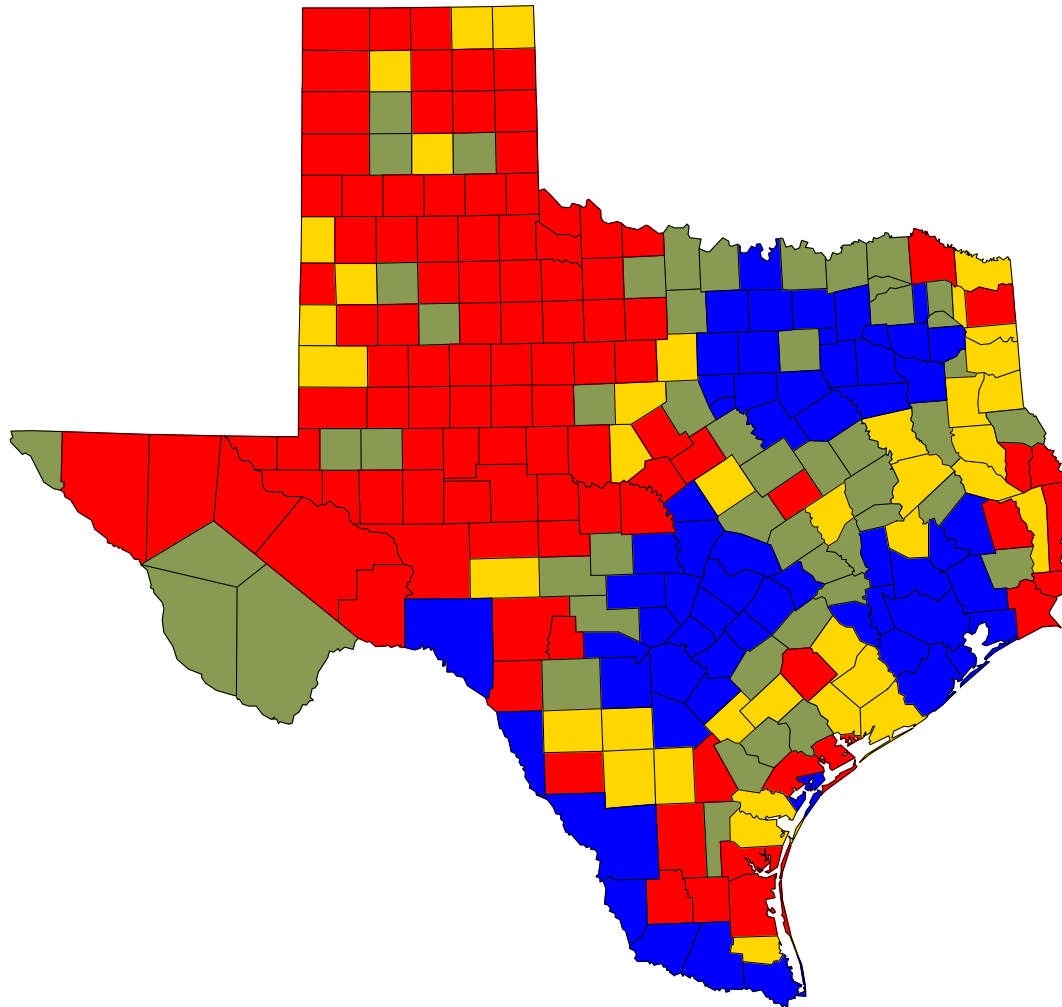
Population Change in Texas Counties, 1990-2000



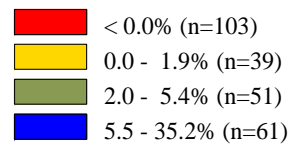
Percent Change 2000-2003



Population Change in Texas Counties, 2000-2004



Percent Change 2000-2004

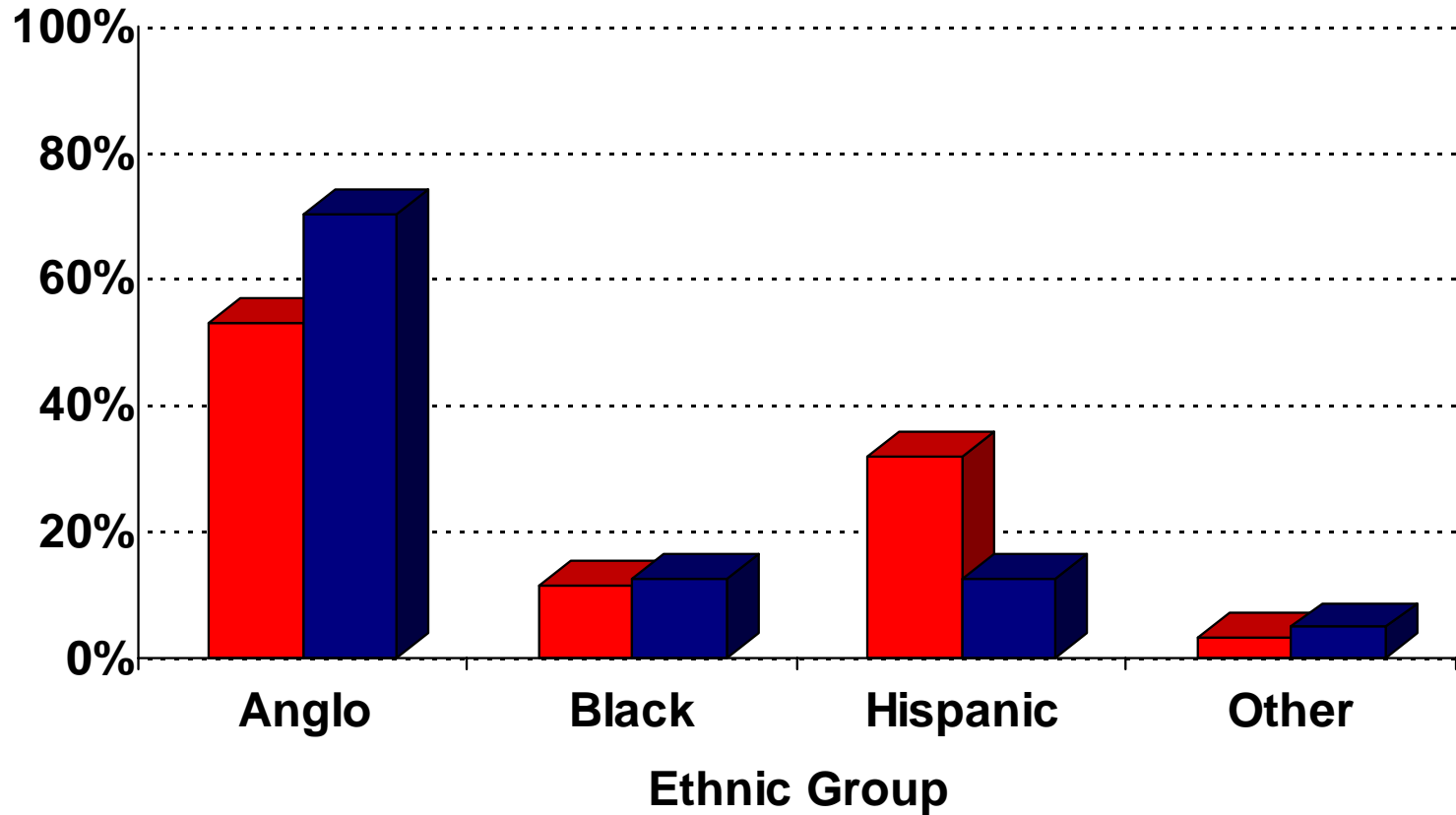


Racial/Ethnic Change in Texas



Proportion of Population by Ethnicity for Texas and the United States, 2000

Proportion of Population

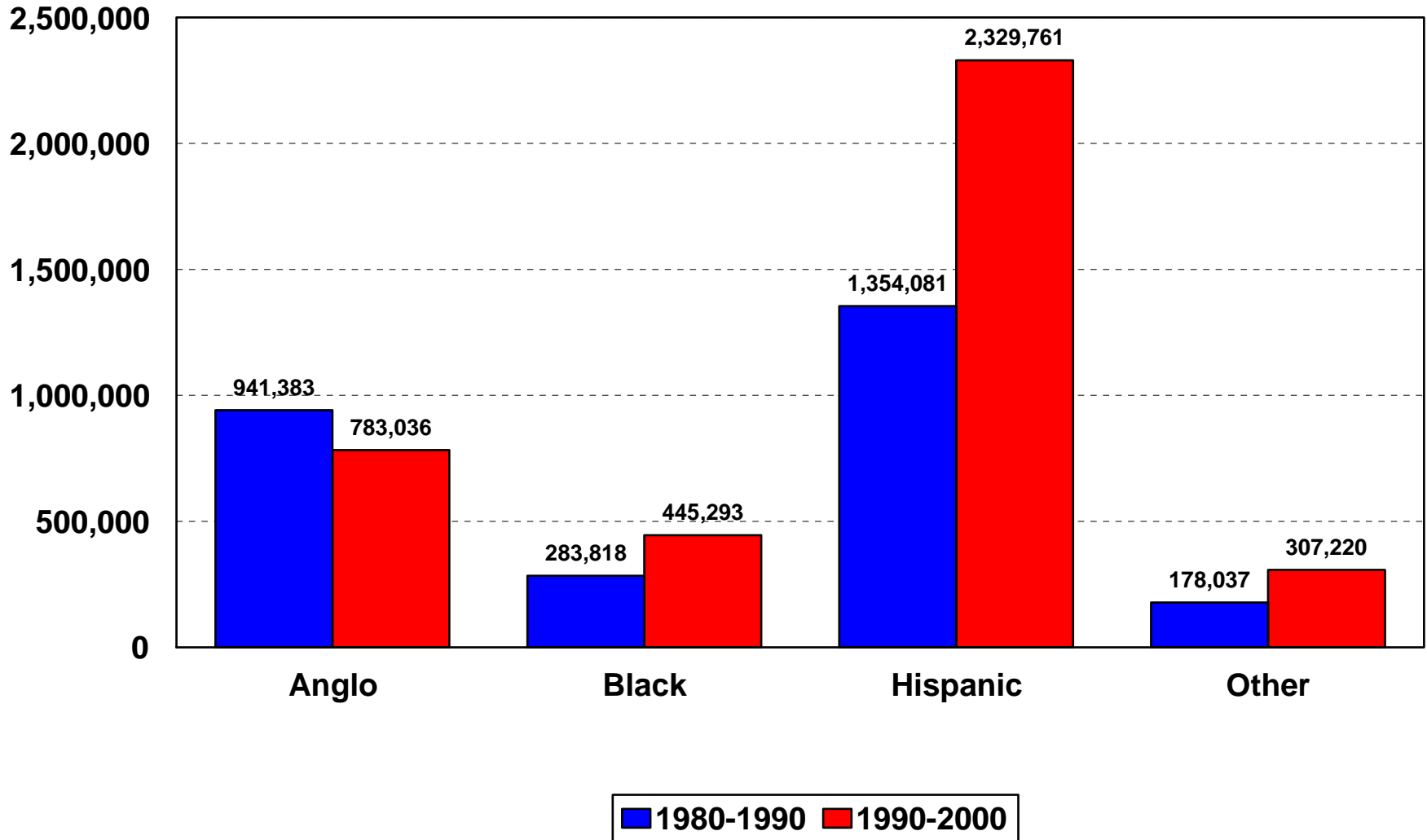


■ Texas ■ United States

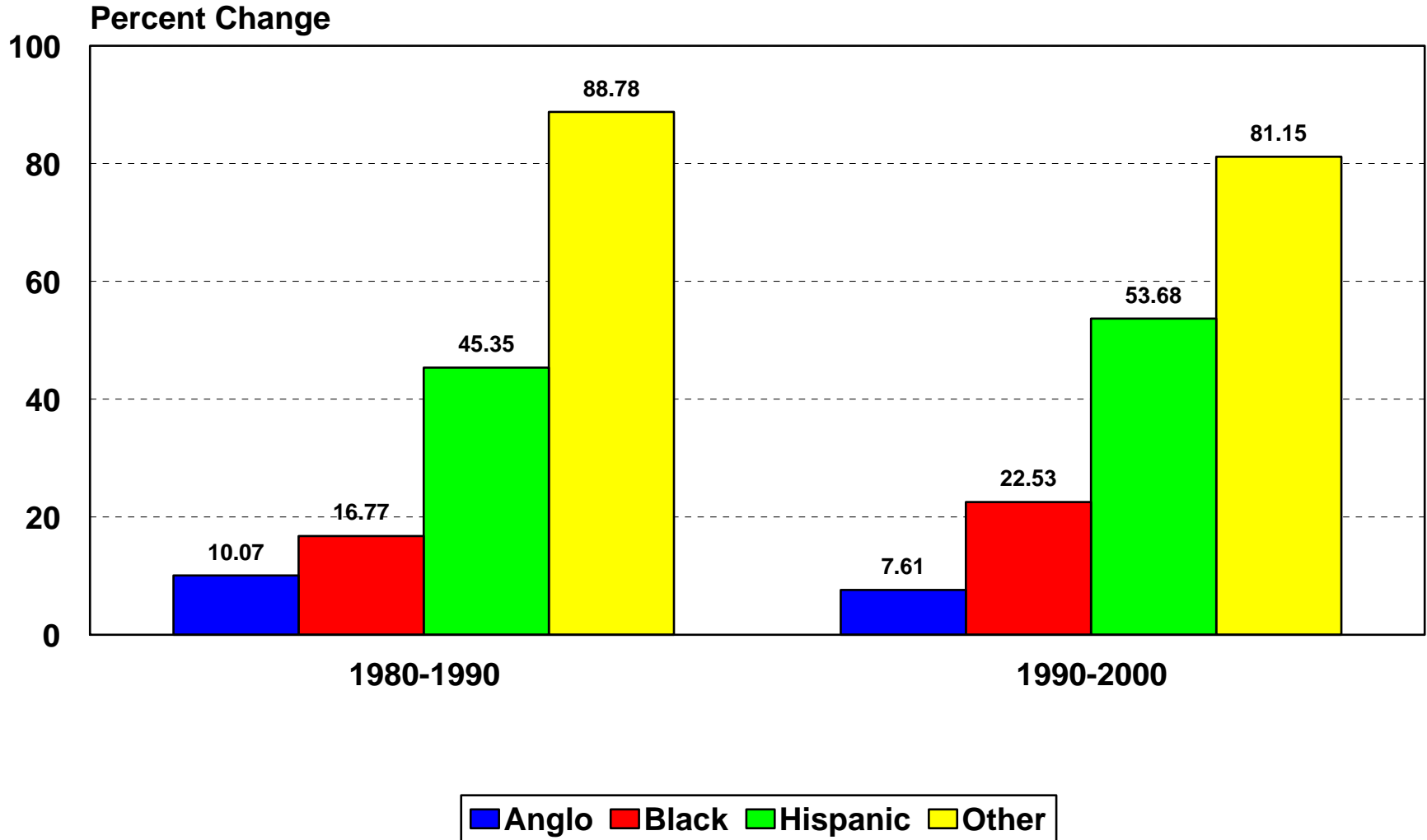
**Population 1980 and 1990, Percent Change in Population
1990 to 2000 and Proportion of Population 1990 and 2000
by Ethnicity for Texas and the United States**

Ethnic Category	Number		Percent Change 1990-2000	Proportion of Population	
	1990	2000		1990	2000
<u>Texas</u>					
Anglo	10,291,680	11,074,716	7.6	60.6	53.1
Black	1,976,360	2,421,653	22.5	11.6	11.6
Hispanic	4,339,905	6,669,666	53.7	25.6	32.0
Other	378,565	685,785	81.2	2.2	3.3
Total	16,986,510	20,851,820	22.8	100.0	100.0
<u>United States</u>					
Anglo	188,128,296	197,165,673	4.8	75.7	70.1
Black	29,216,293	35,195,894	20.5	11.7	12.5
Hispanic	22,354,059	35,305,818	57.9	9.0	12.5
Other	9,011,225	13,754,521	52.6	3.6	4.9
Total	248,709,873	281,421,906	13.2	100.0	100.0

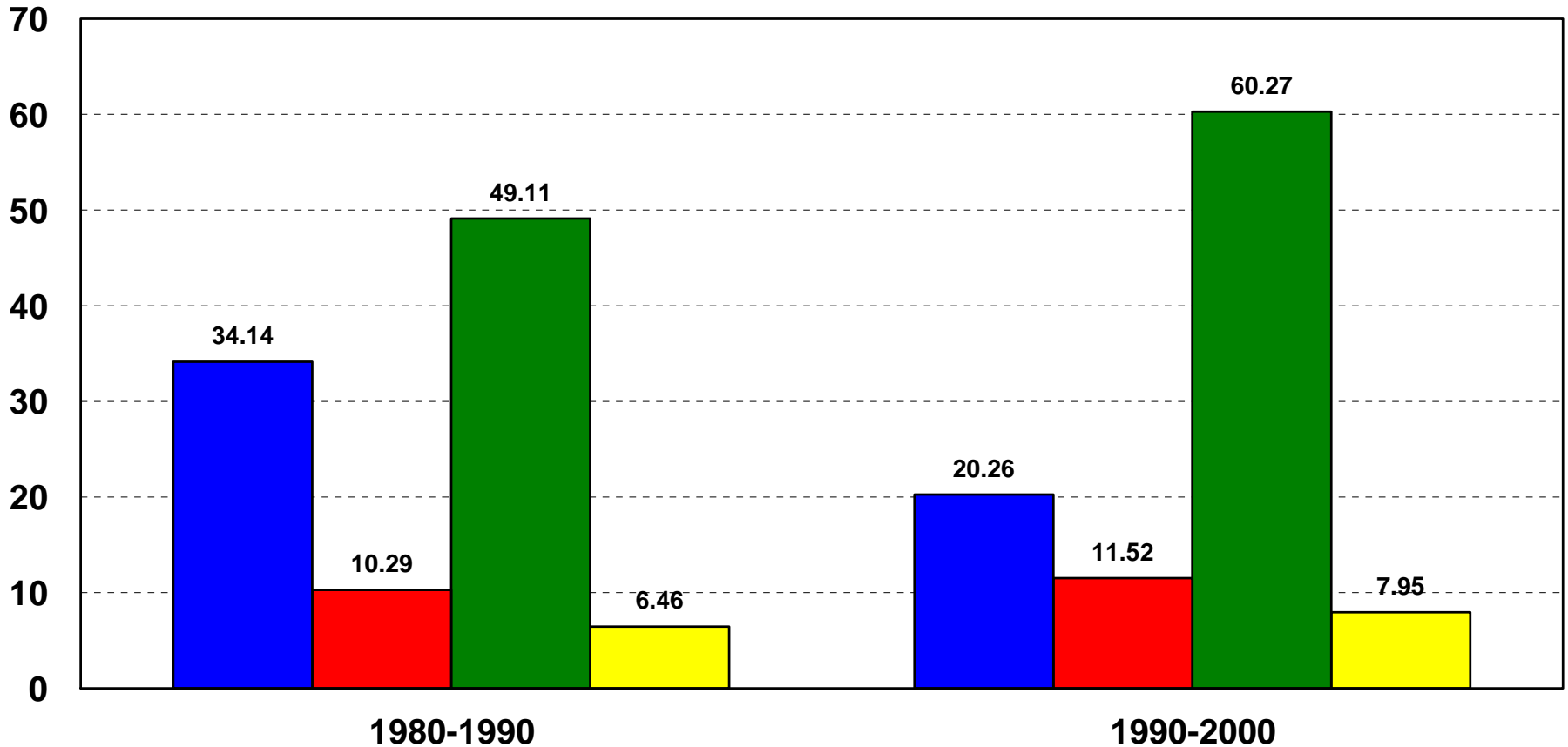
Numerical Change in Population by Race/Ethnicity in Texas for 1980-1990 and 1990-2000



Percent Change in Population by Race/Ethnicity for 1980-1990 and 1990-2000 in Texas

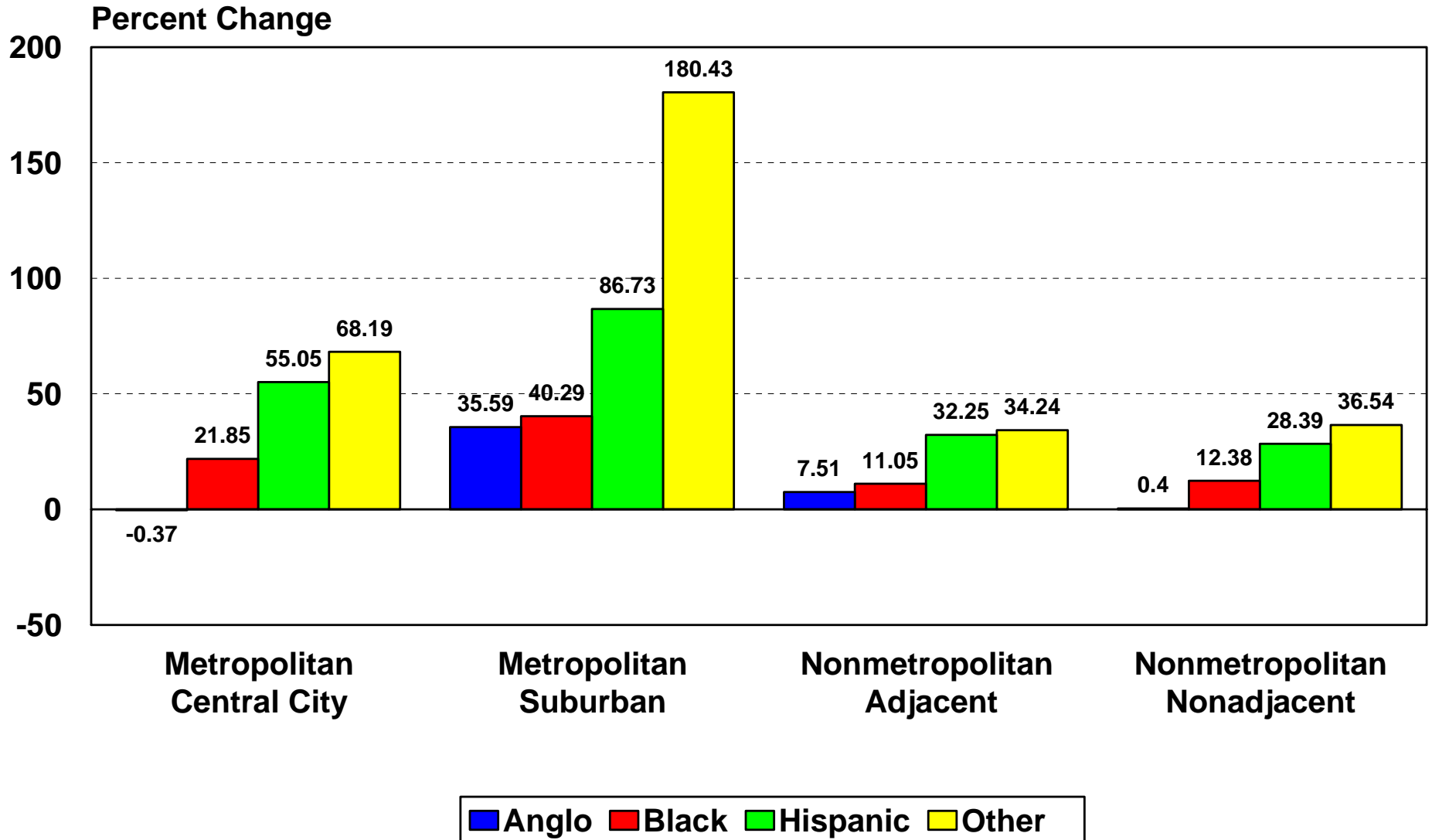


Proportion of Net Population Change Attributable to Each Race/Ethnicity Group in Texas for 1980-1990 and 1990-2000

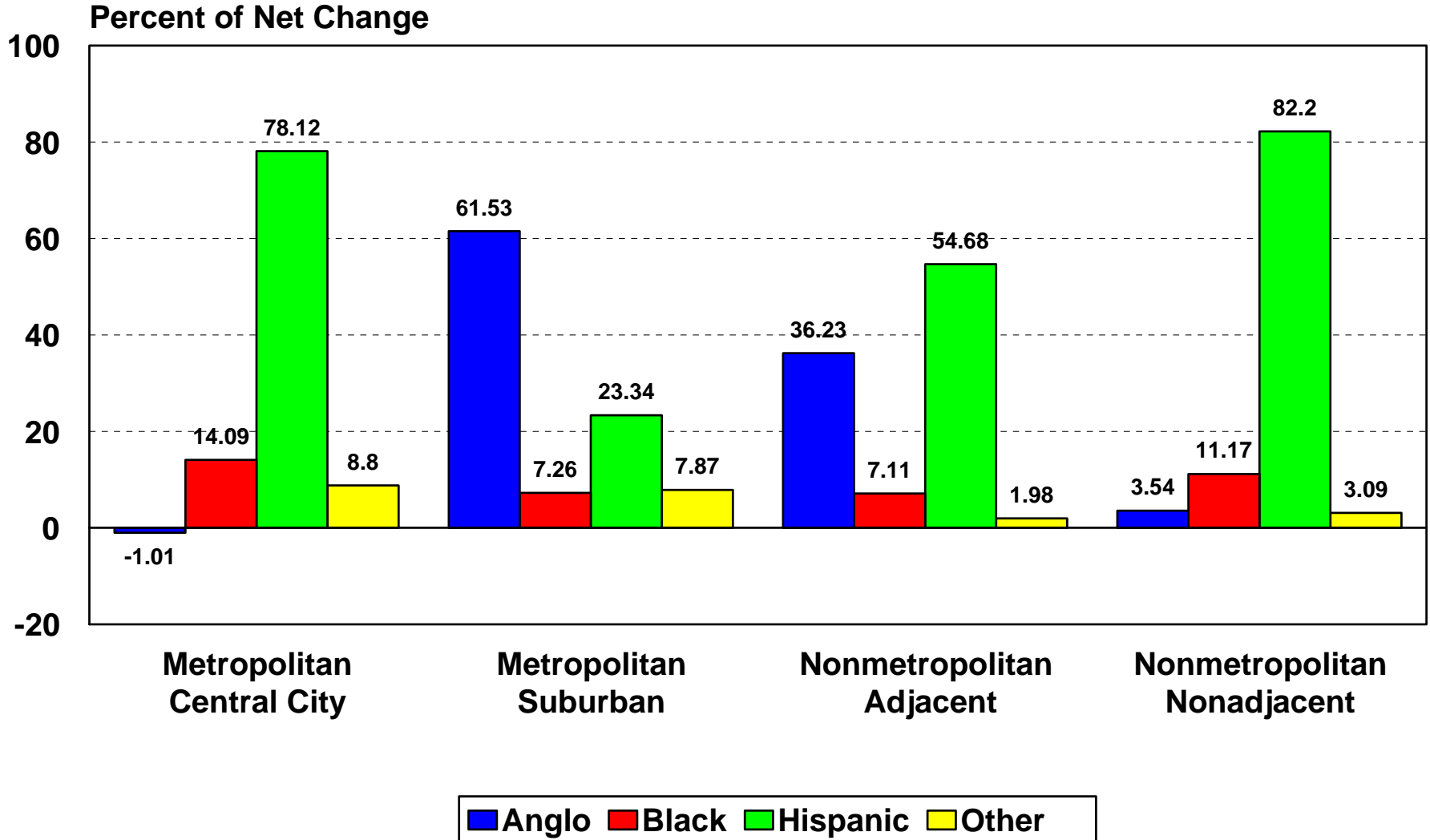


■ Anglo ■ Black ■ Hispanic ■ Other

Percent Change in Population from 1990 to 2000 by Race/Ethnicity by Metropolitan Status in Texas



Proportion of Net Population Change from 1990 to 2000 Attributable to Each Racial/Ethnic Group by Each Metropolitan Status Type in Texas

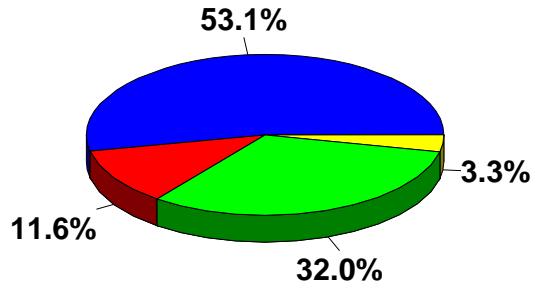


Population Change by Race/Ethnicity in Texas, 2000-2003

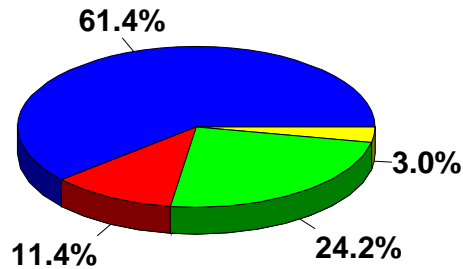
Race/ Ethnicity	2000 Census Population	2003 Estimated Population	Numerical Change 2000- 2003	Percent Change 2000- 2003	Percent of Population	
					2000	2003
Anglo	11,074,716	11,213,300	138,584	1.3	53.1	50.6
Black	2,421,653	2,538,017	116,364	4.8	11.6	11.5
Hispanic	6,669,666	7,557,453	887,787	13.3	32.0	34.2
Other	685,785	809,739	123,954	18.1	3.3	3.7
Total	20,851,820	22,118,509	1,266,689	6.1	100.0	100.0

Source: Texas State Data Center, Institute for Demographic and Socioeconomic Research, College of Business, University of Texas at San Antonio.

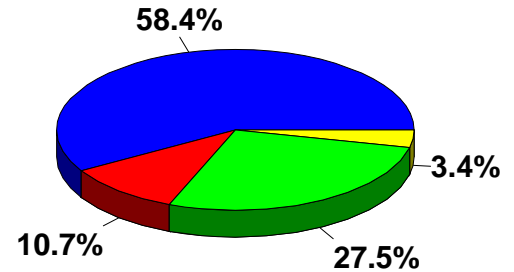
Ethnic Diversity of the Population, Householders, and Labor Force in Texas, 2000 and 2040*



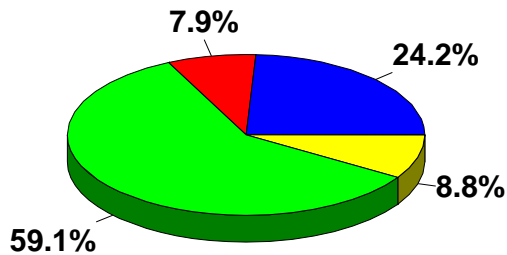
2000 Population



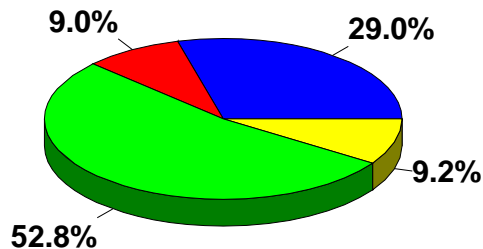
2000 Householders



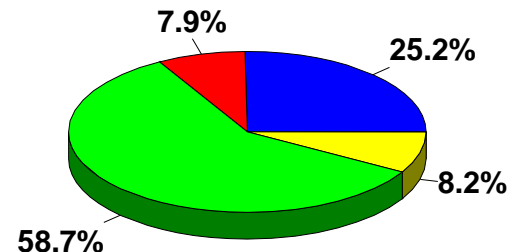
2000 Civilian Labor Force



2040 Population



2040 Householders



2040 Civilian Labor Force

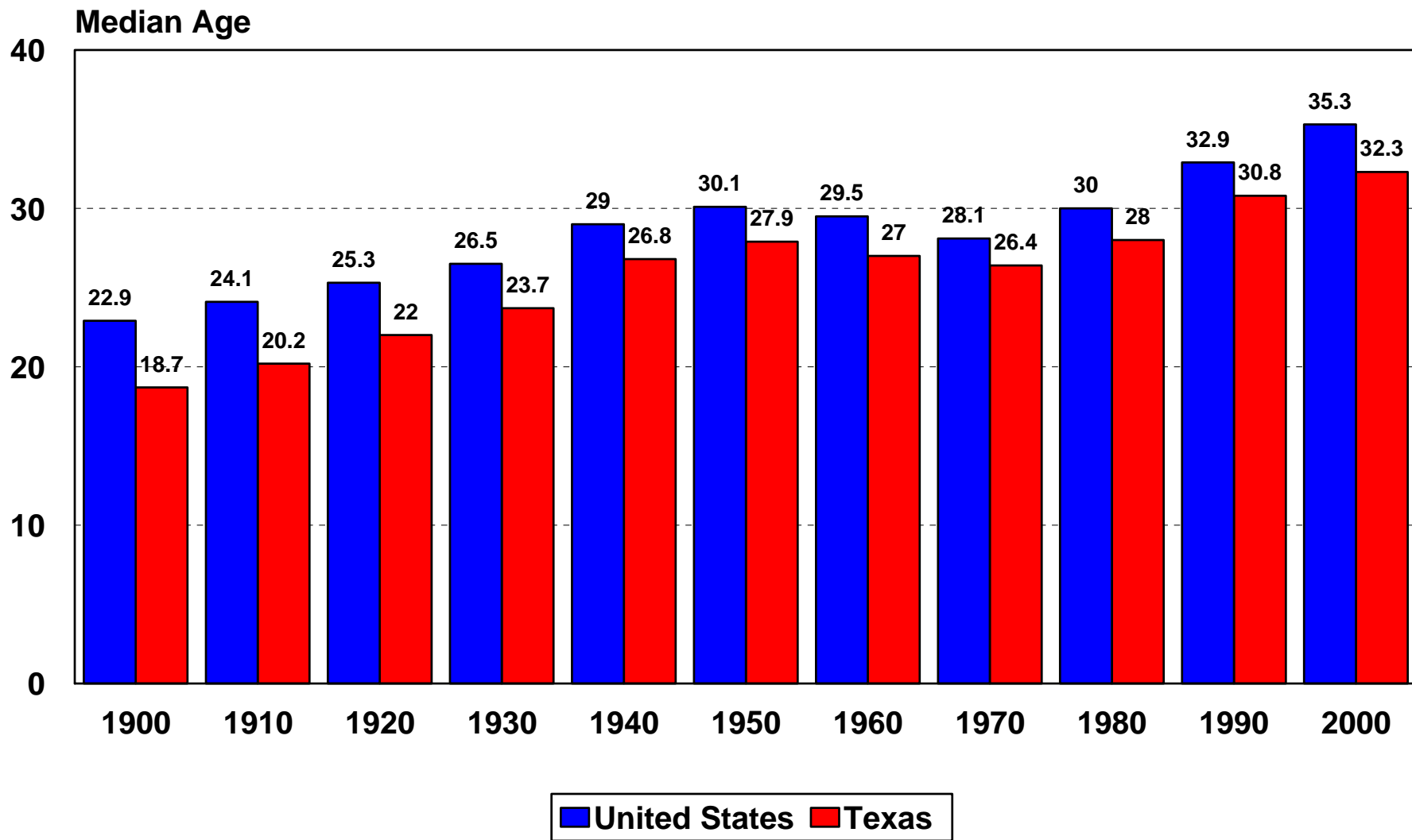


* Projections are shown for the 1.0 scenario

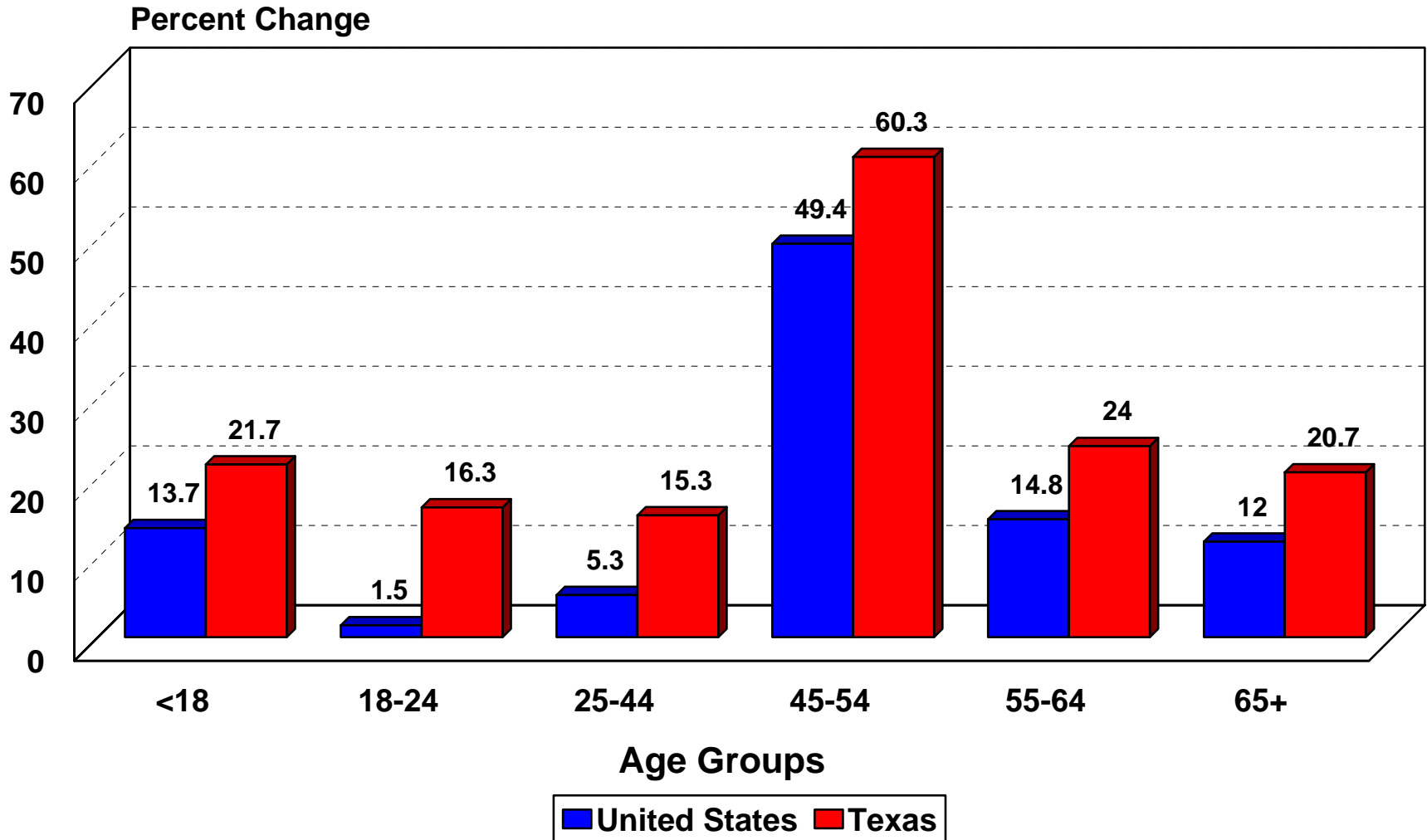
Major Changes in Population:

Age Composition

Median Age in the United States and Texas, 1900-2000



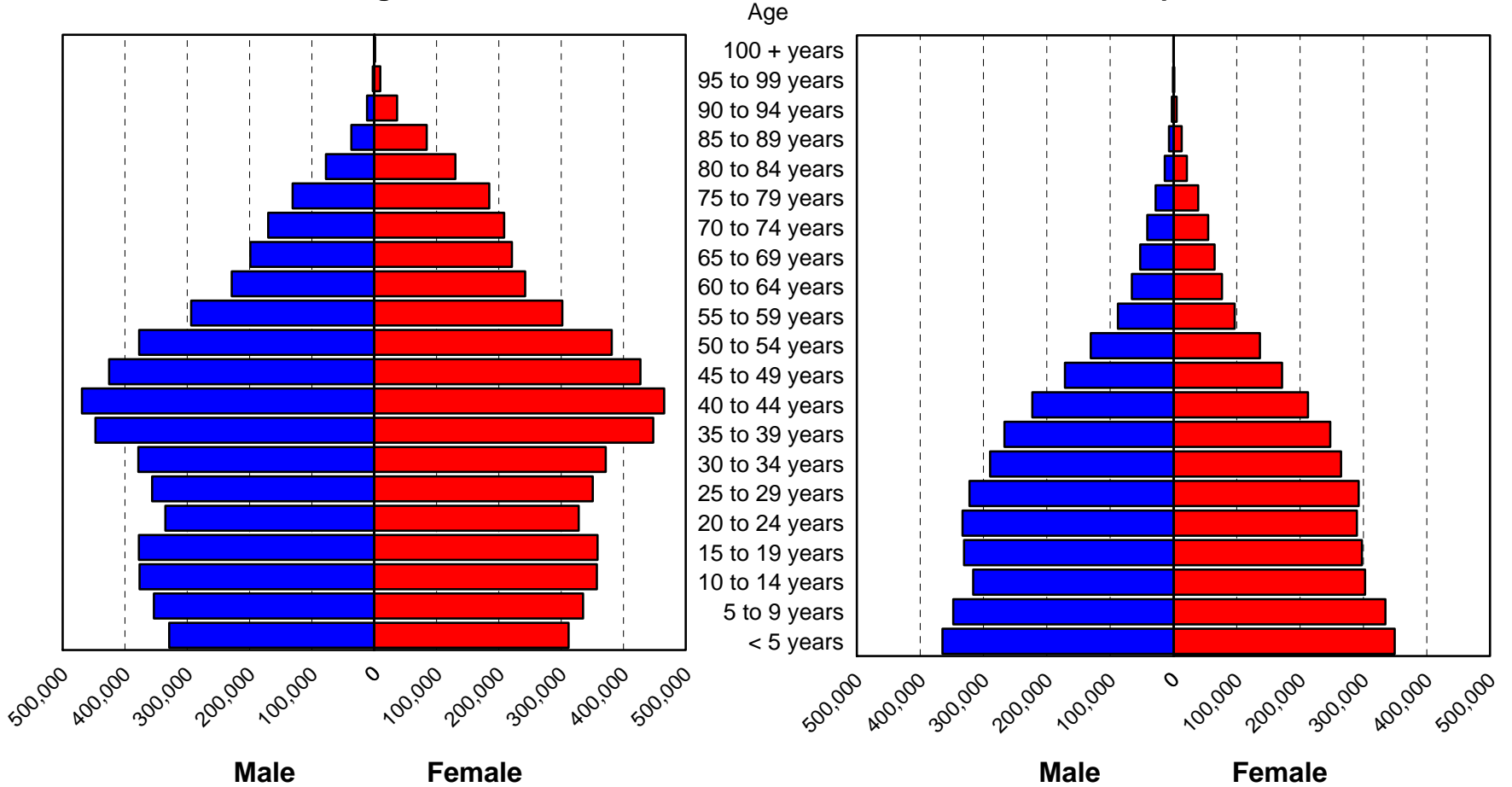
Percent Change in Population by Age Group in the United States and Texas, 1990-2000



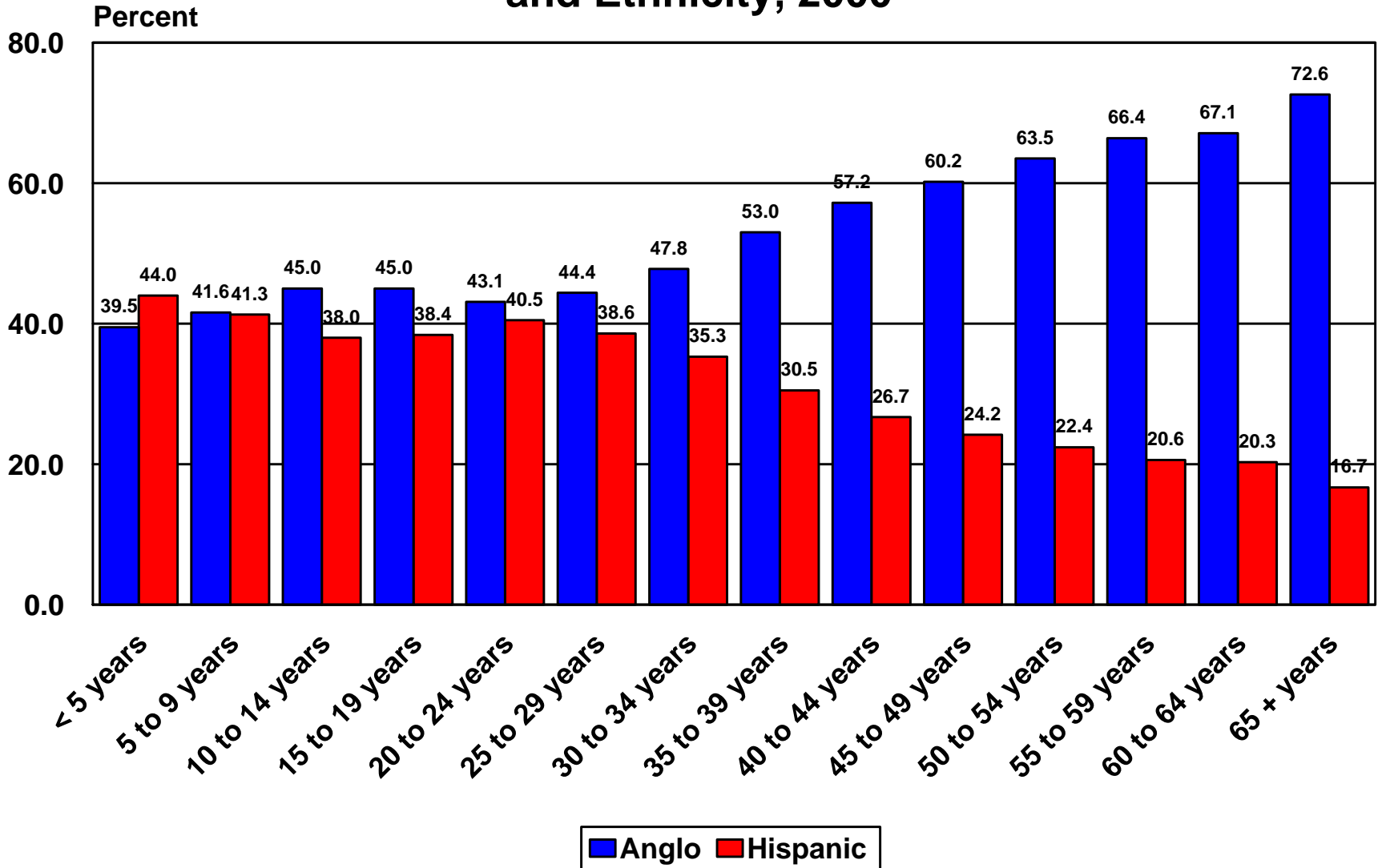
Population Pyramids for Anglo and Hispanic Ethnic Groups in Texas, 2000

Anglo

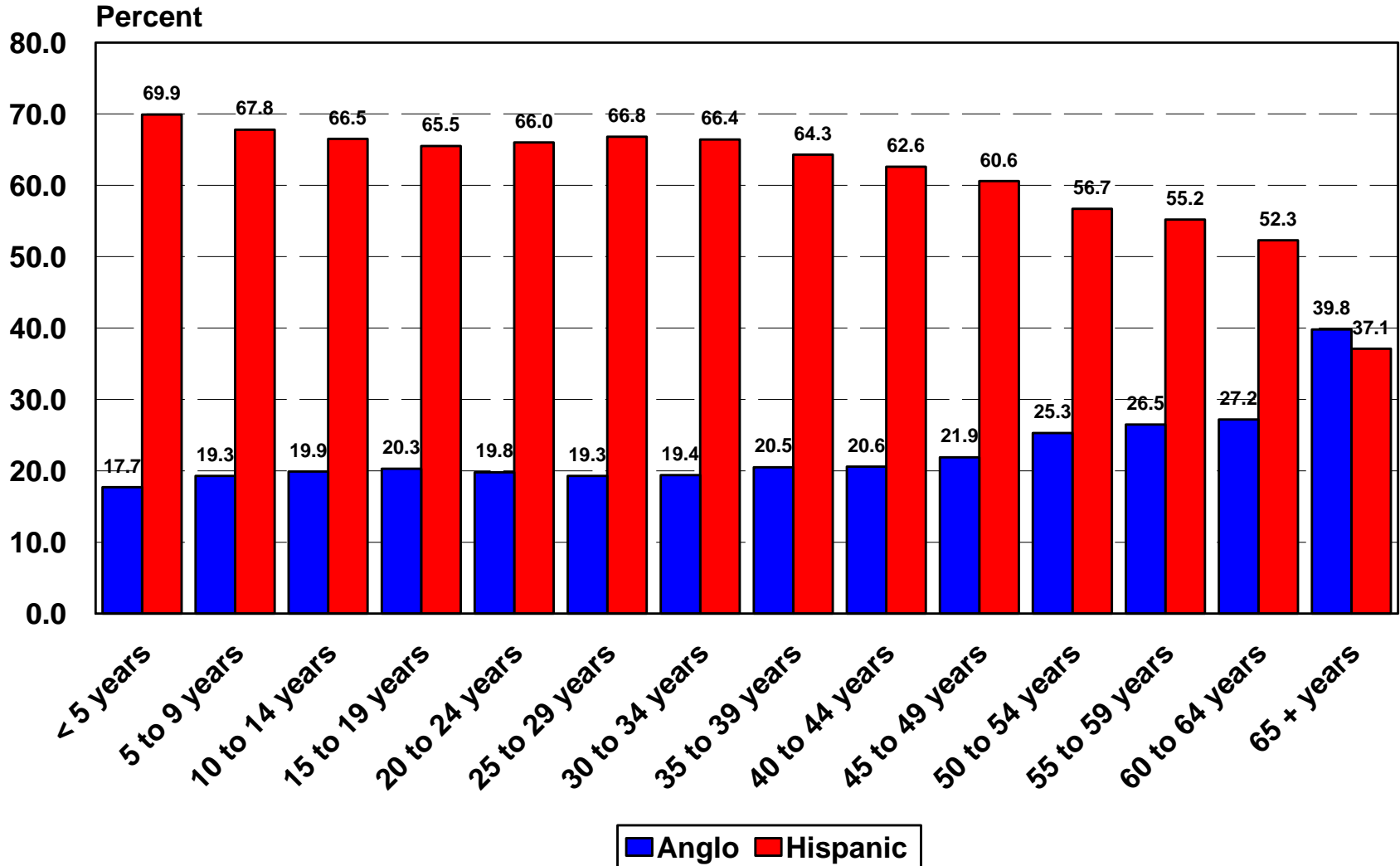
Hispanic



Percent of Texas Population by Age Group and Ethnicity, 2000



Percent of Texas Population by Age Group and Ethnicity, 2040*



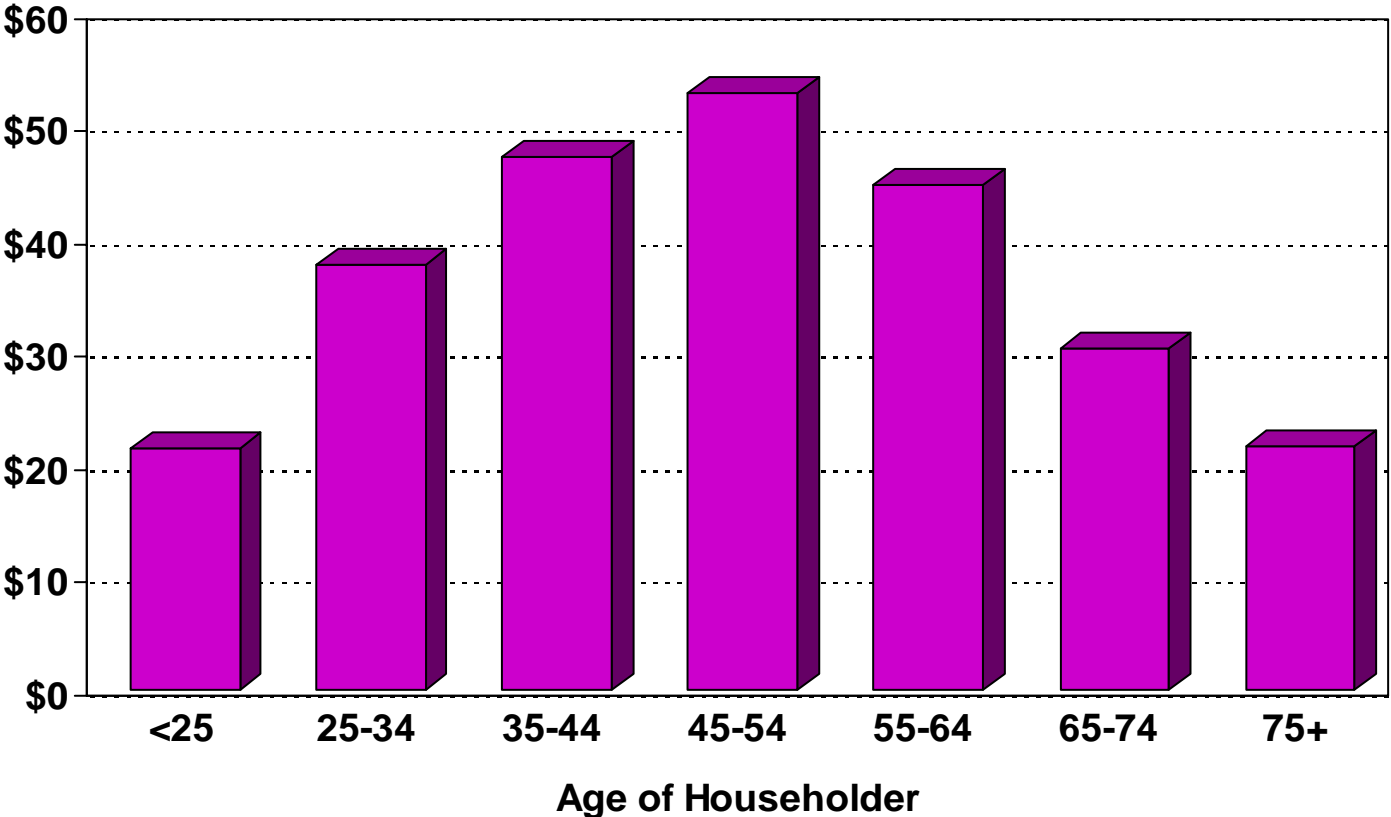
* Projections are shown for the 1.0 scenario

POPULATION CONDITIONS:

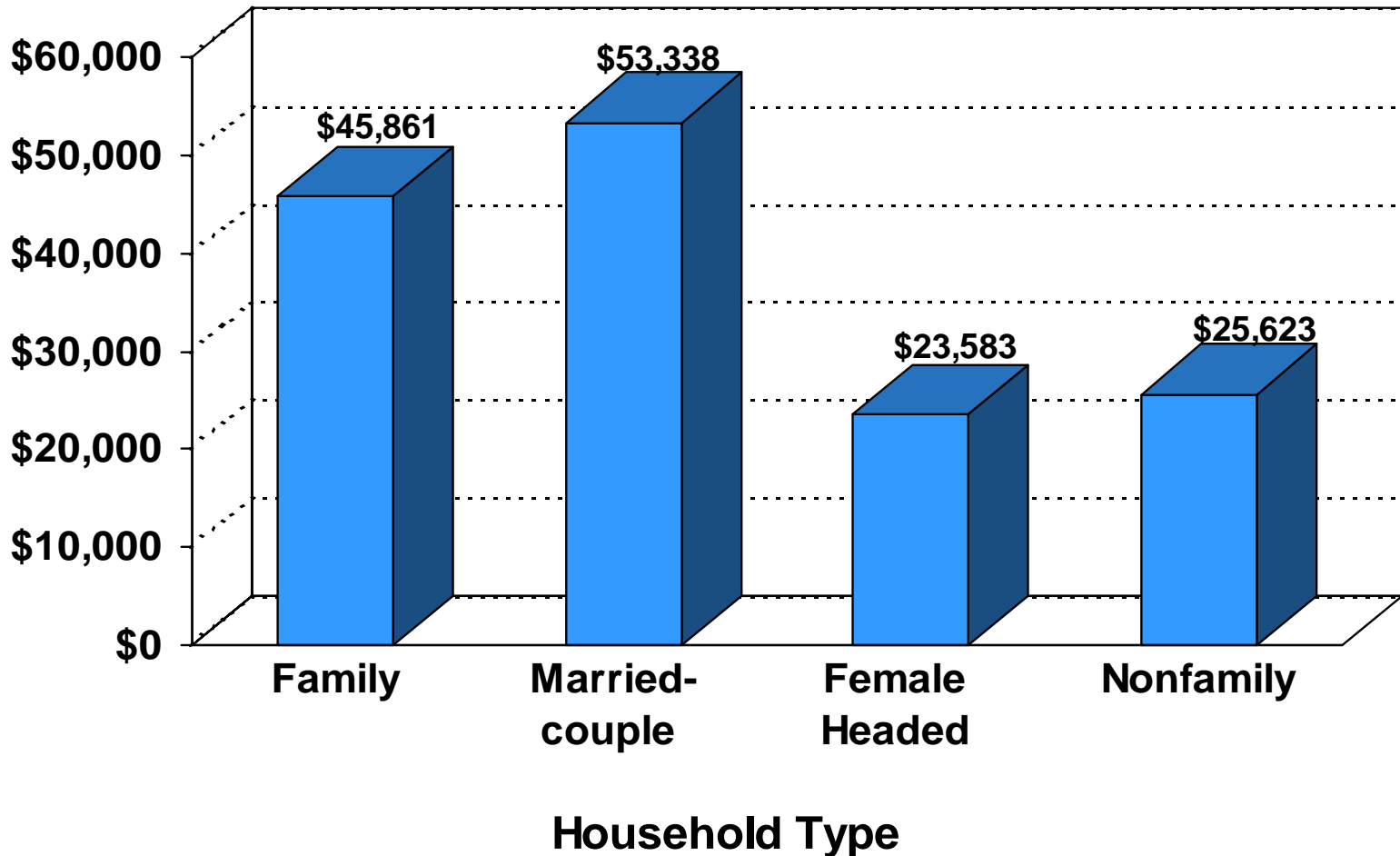
SOCIOECONOMIC

Median Household Income in 1999 in Texas by Age of Householder

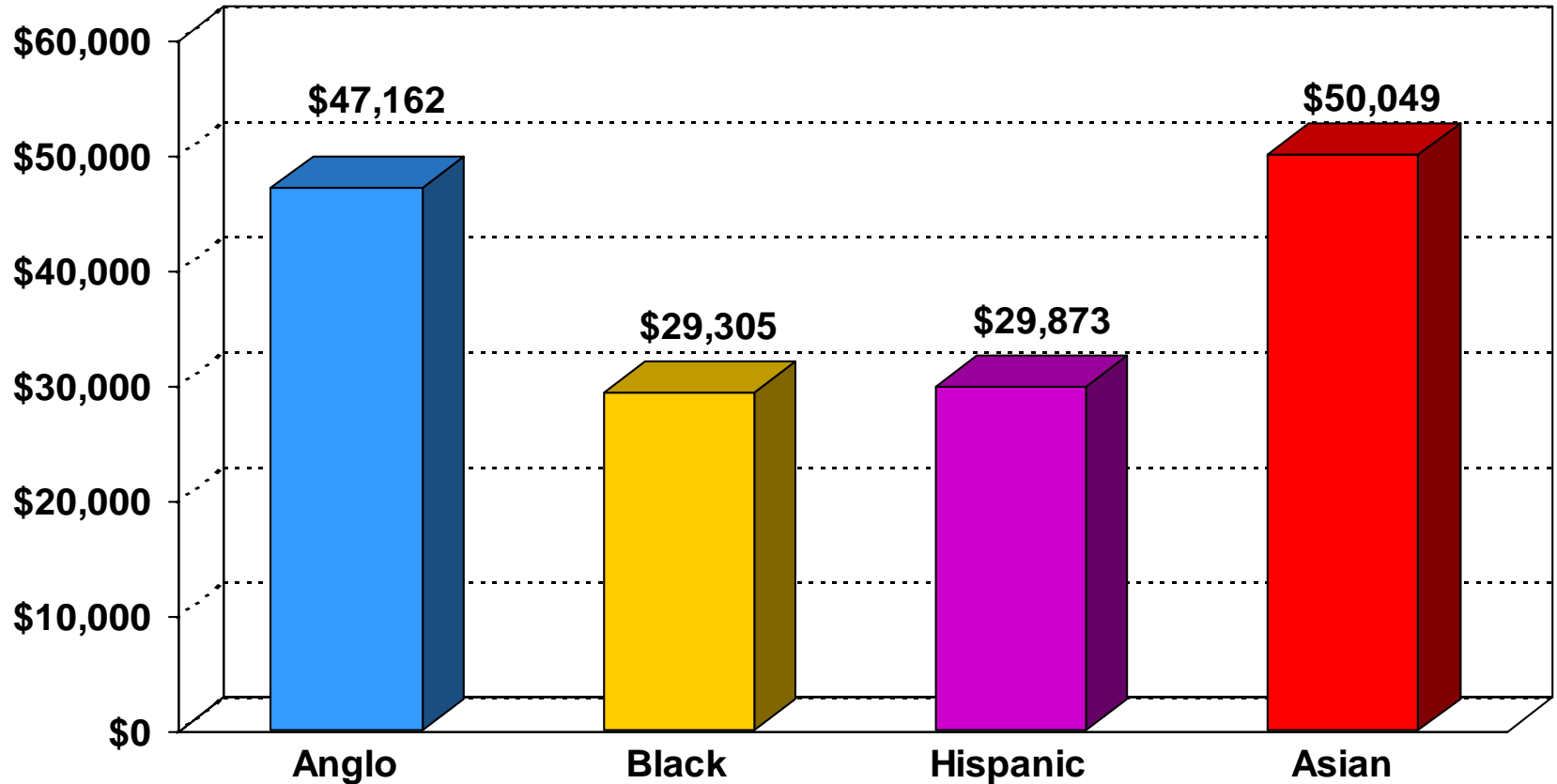
Thousands



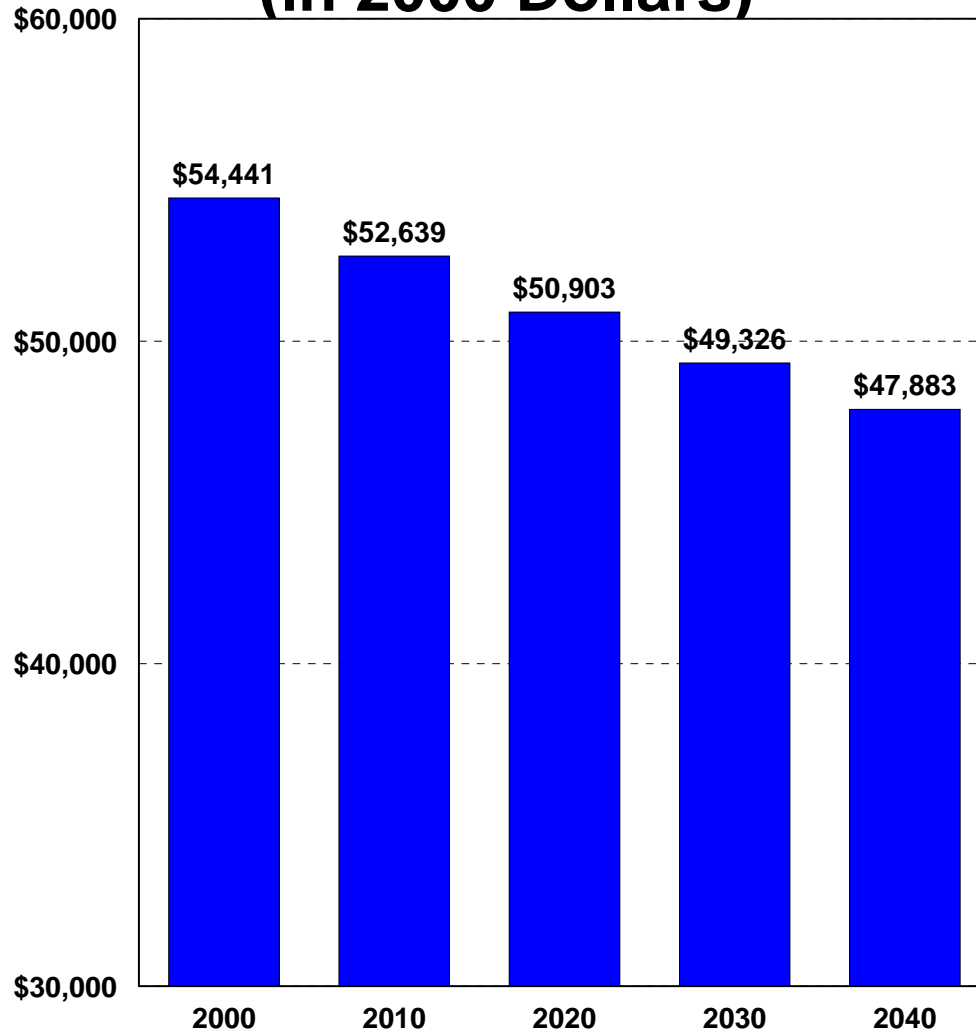
Median Household Income in 1999 in Texas by Household Type



Median Household Income In 1999 in Texas by Race/Ethnicity of Householder

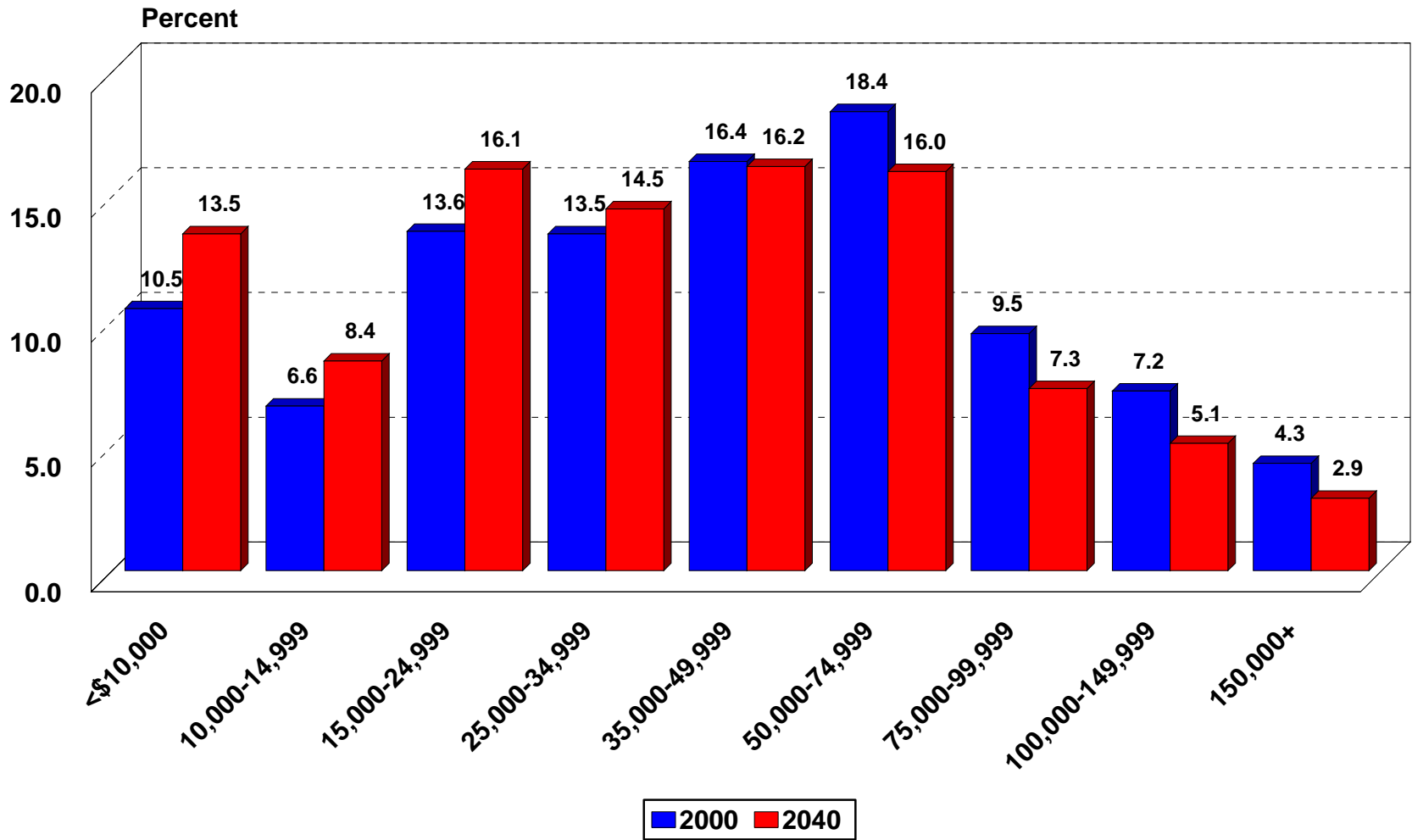


Average Household Income in Texas, 2000-2040* (in 2000 Dollars)



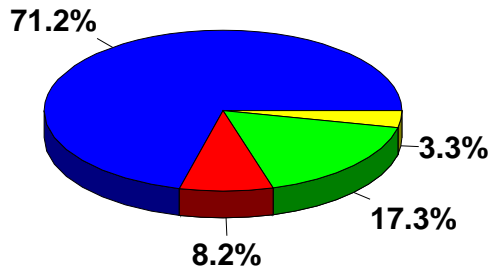
* Projections are shown for the 1.0 scenario

Percent of Households in Texas by Income Category, 2000 and 2040*

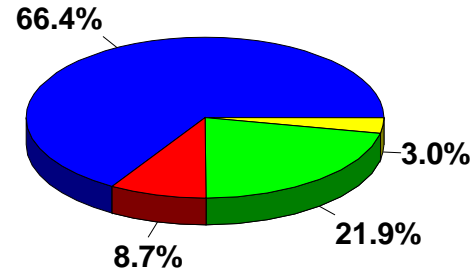


*Projections are shown for the 1.0 scenario

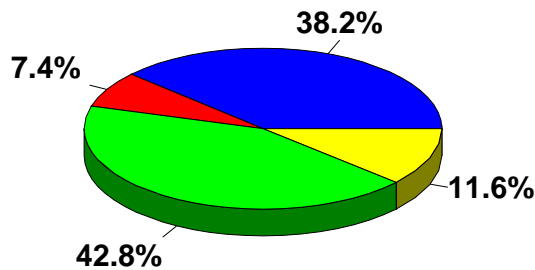
Ethnic Diversity of Household Income and Consumer Expenditures in Texas, 2000 and 2040*



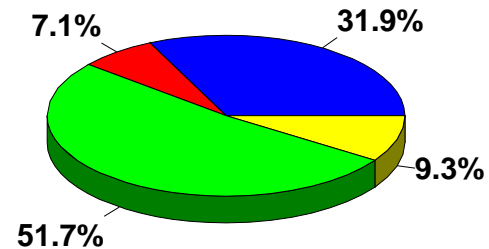
2000 Aggregate Household Income



2000 Consumer Expenditures



2040 Aggregate Household Income

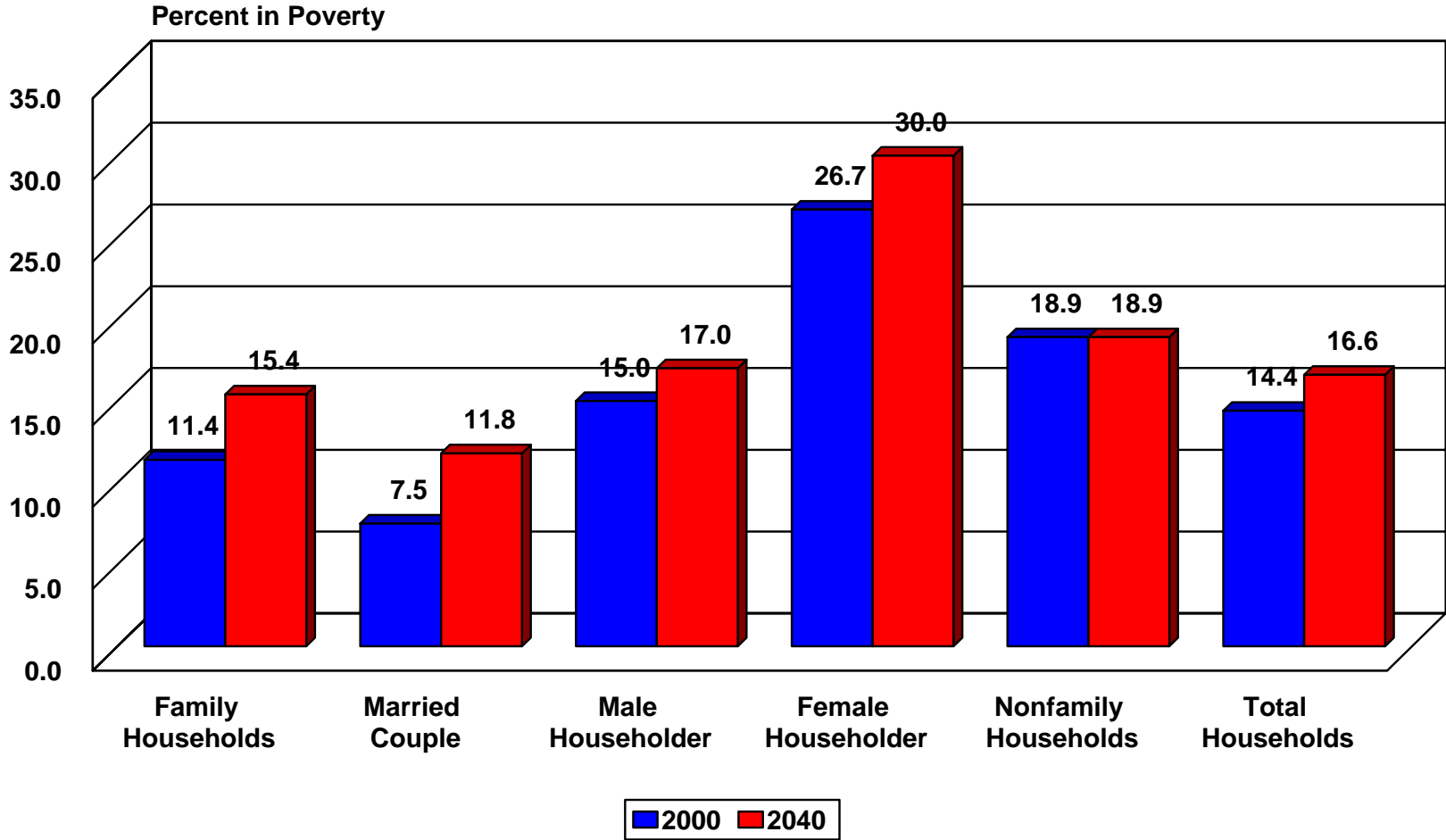


2040 Consumer Expenditures



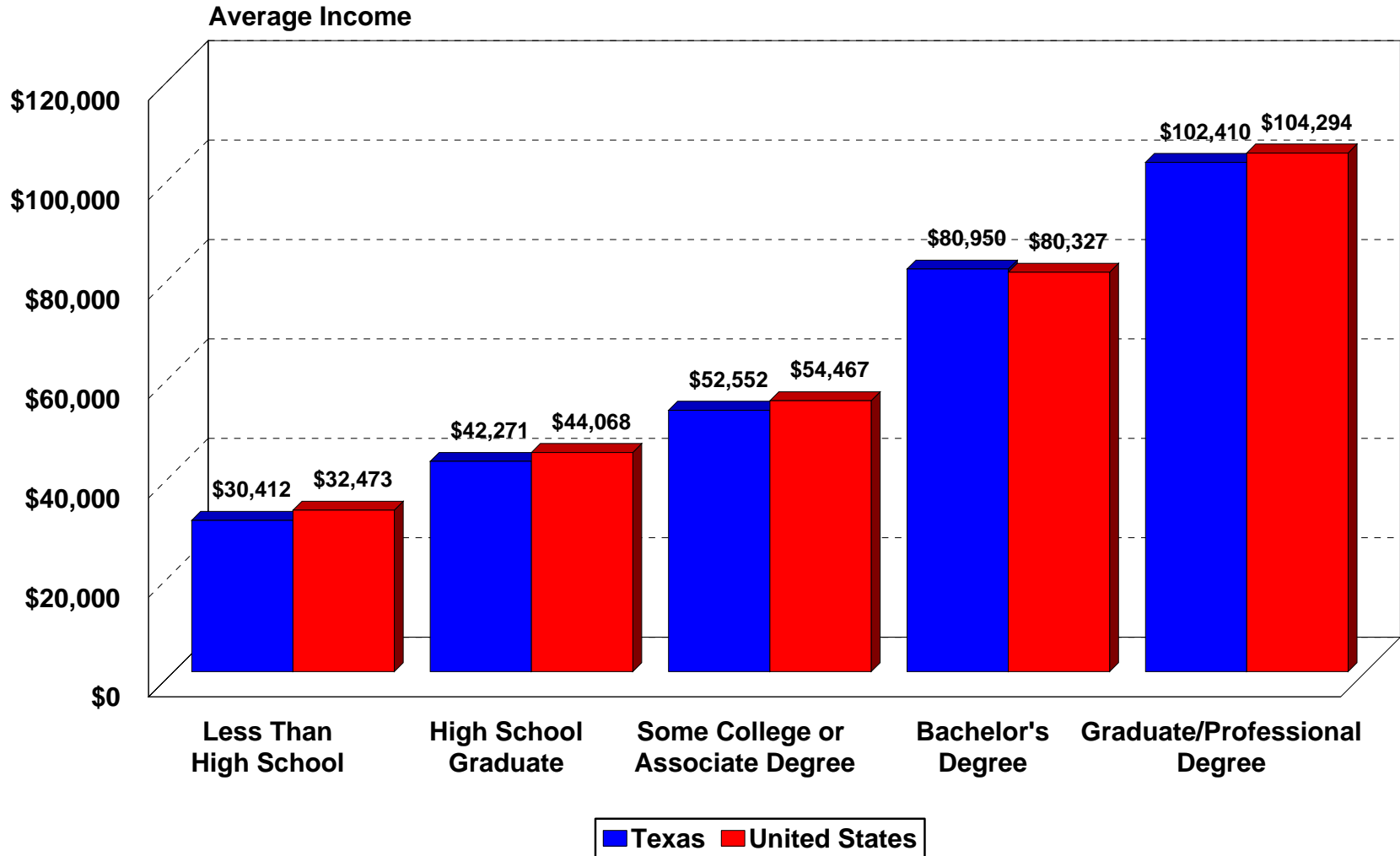
* Projections are shown for the 1.0 scenario

Projected Percent of Households in Poverty by Family Type in Texas, 2000 and 2040



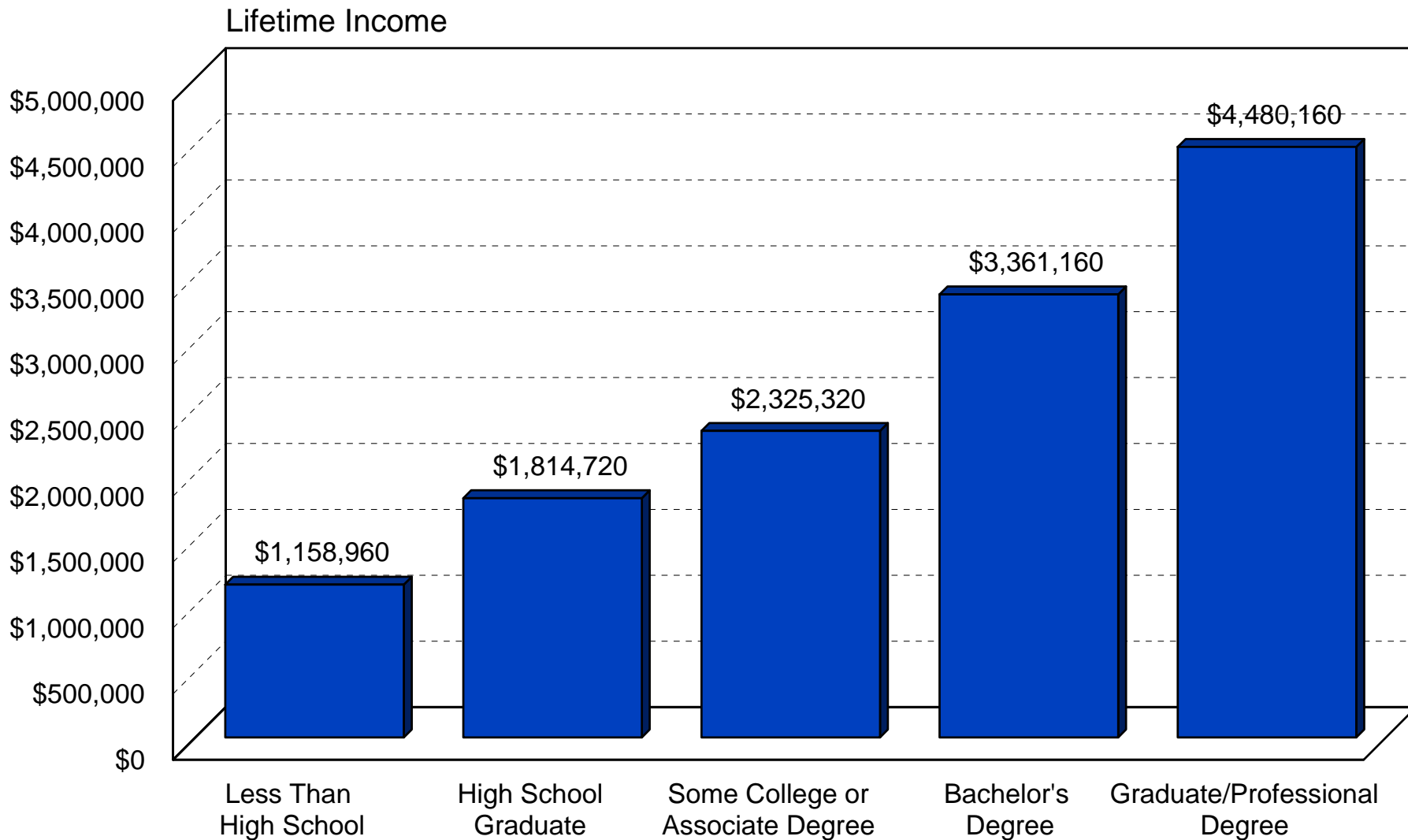
* Projections are shown for the 1.0 scenario

Average Annual Household Income in Texas and the United States by Educational Attainment of Householder in 2000*



*From Census 2000 Public Use Microdata Sample (1% File)

Lifetime Household Income in the United States by Educational Attainment* in 2000



*From March 2001 Current Population Survey

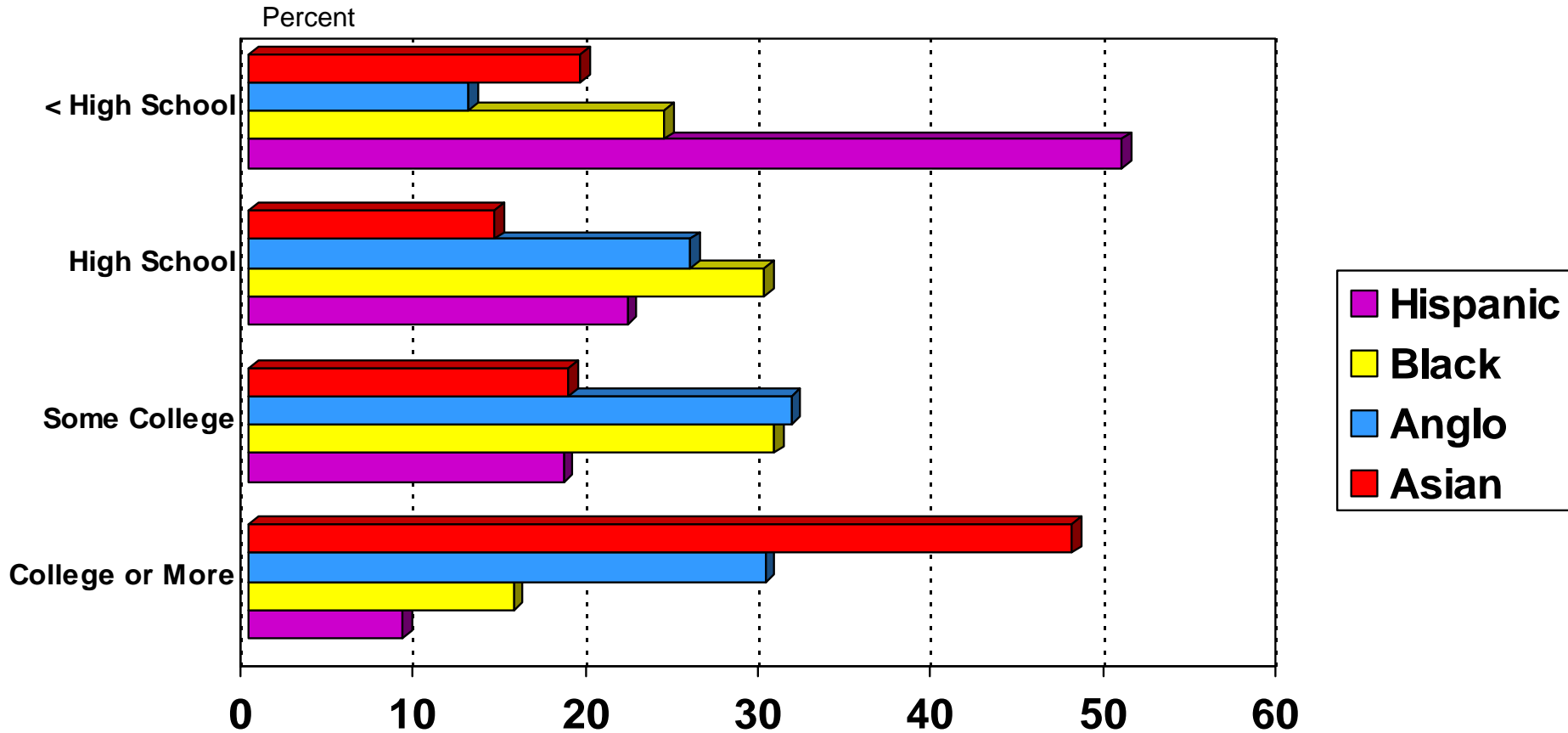
POPULATION CONDITIONS:

EDUCATION

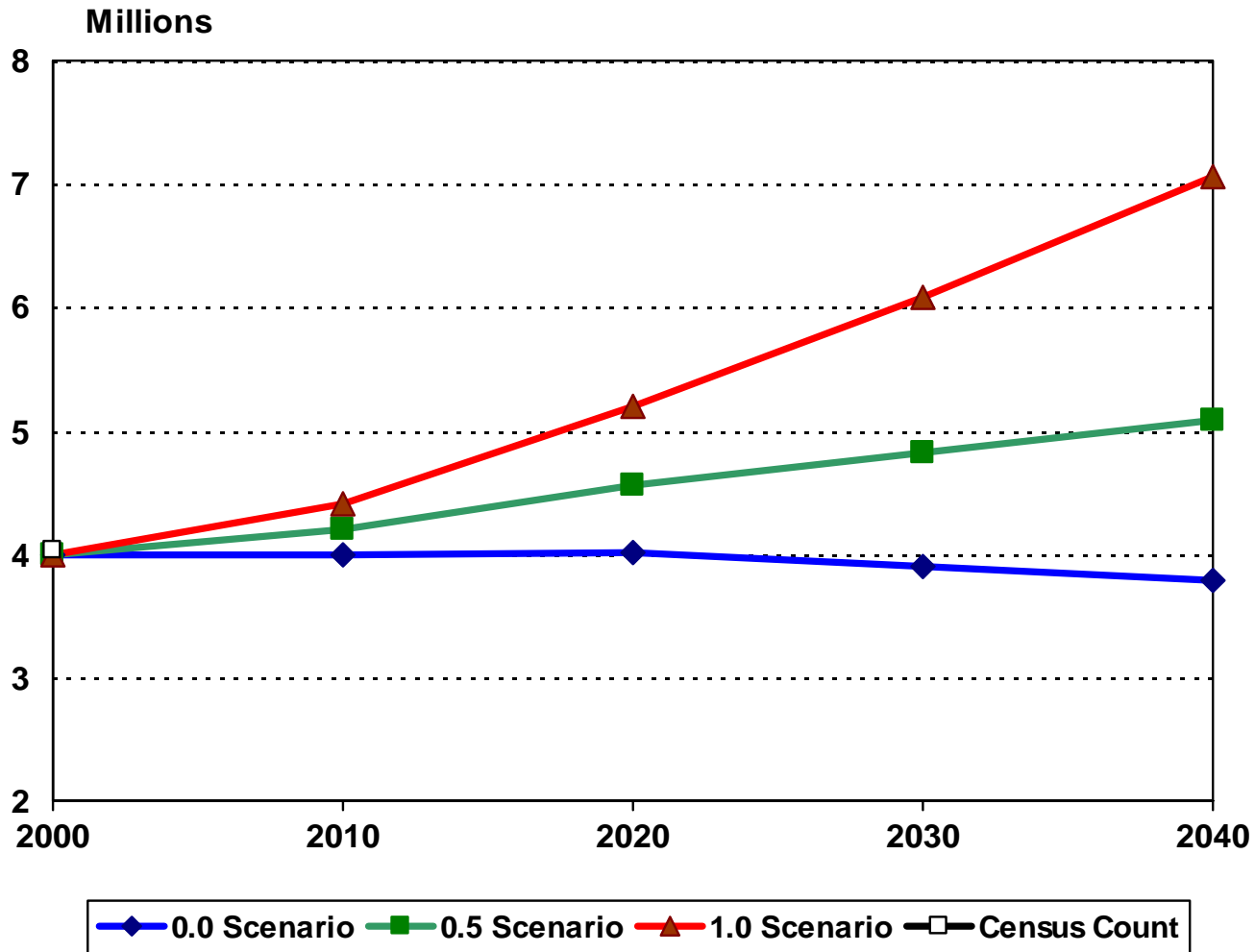
**Public Community College and University
Enrollment Rates (Per 100 Persons Ages 18 to 35)
in Texas by Race/Ethnicity, 1990 and 2000**

Year	Anglo	Black	Hispanic	Other	Total
Community College					
1990	6.3	4.1	4.4	5.6	5.5
2000	6.5	5.2	4.8	6.8	5.7
Public University					
1990	7.4	4.0	3.5	10.0	6.0
2000	7.5	4.7	3.3	10.3	5.7

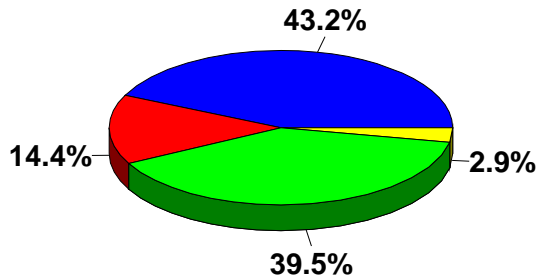
Educational Attainment in 2000 in Texas for Persons 25+ Years of Age By Race/Ethnicity



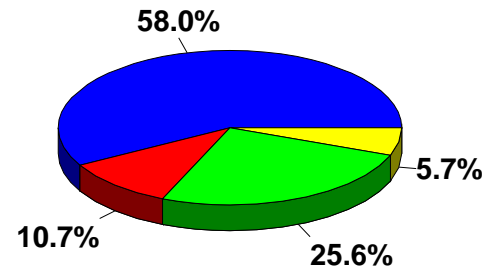
Enrollment in Public Elementary and Secondary Schools in Texas for all Scenarios, 2000-2040



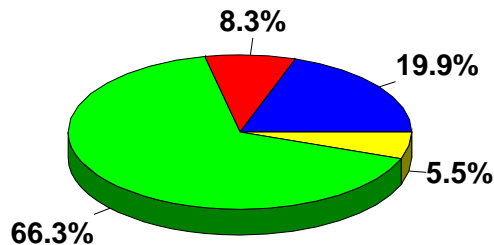
Ethnic Diversity of the Population Enrolled in Elementary and Secondary Schools and Colleges in Texas, 2000 and 2040*



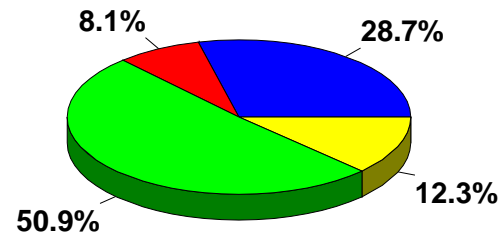
2000 Public Elementary and Secondary



2000 Public Colleges and Universities



2040 Public Elementary and Secondary

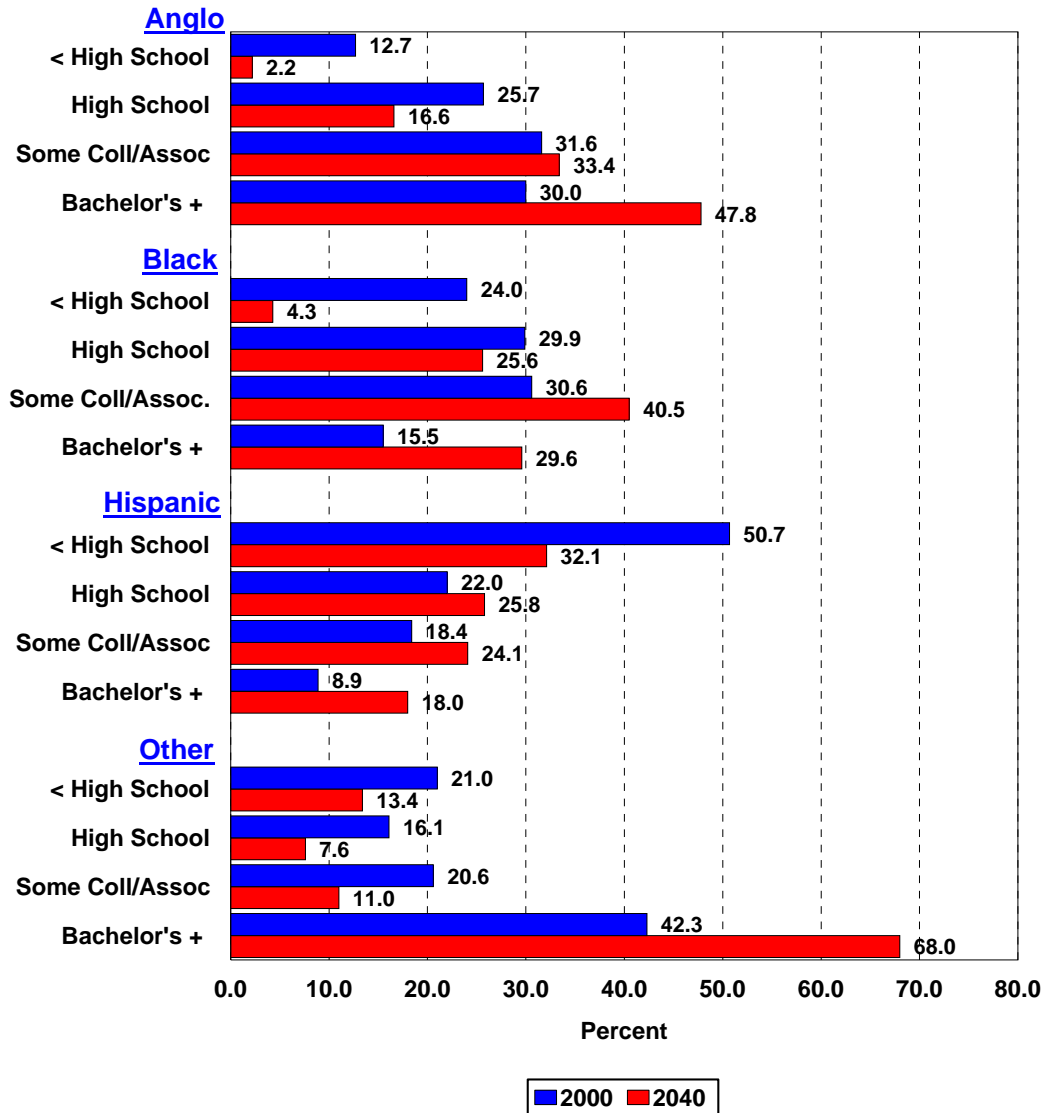


2040 Public Colleges and Universities



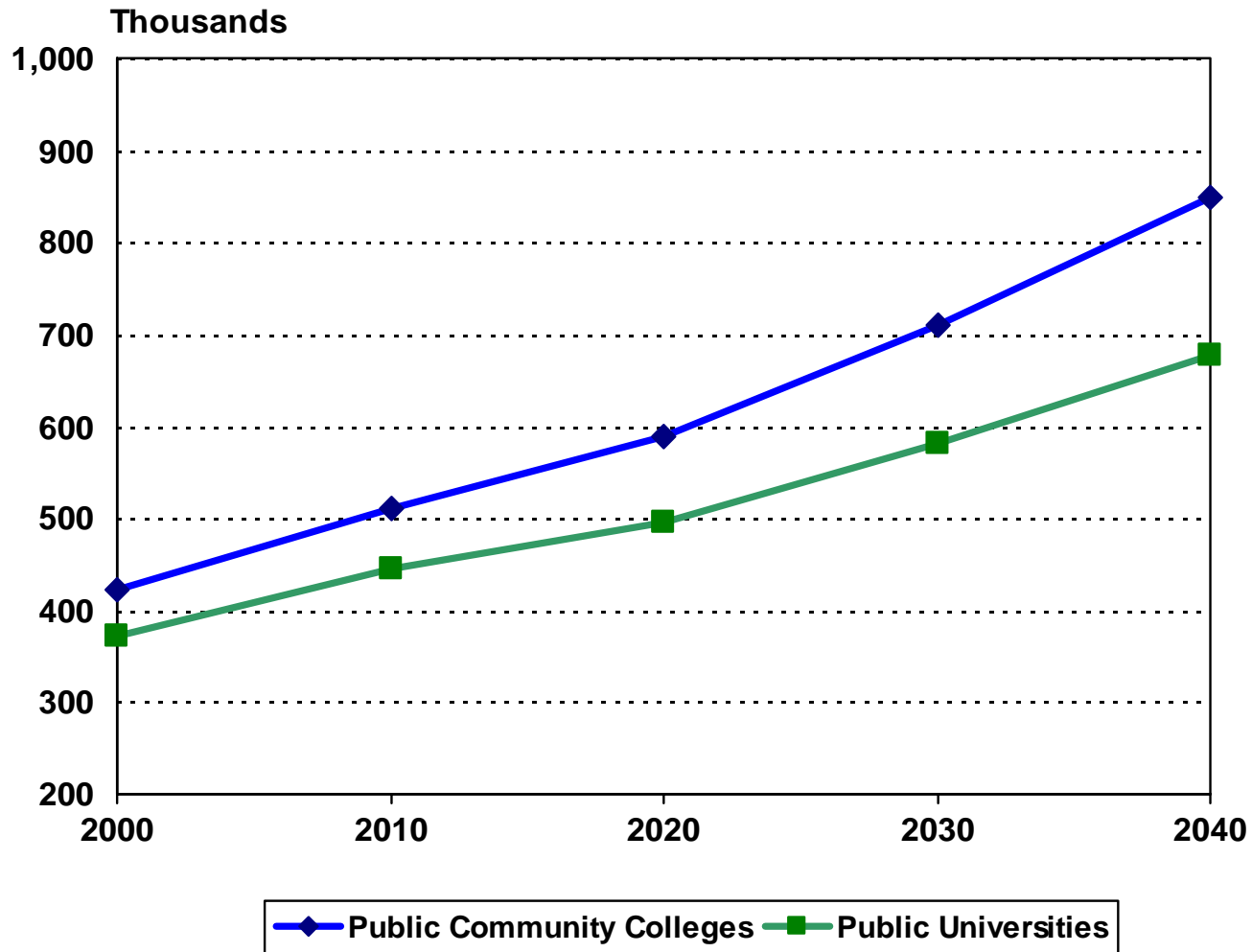
* Projections are shown for the 1.0 scenario

Percent of Persons 25 Years of Age or Older by Level of Educational Attainment and Race/Ethnicity in 2000 and Projected to 2040* Assuming 1990-2000 Trends in Educational Attainment Rates



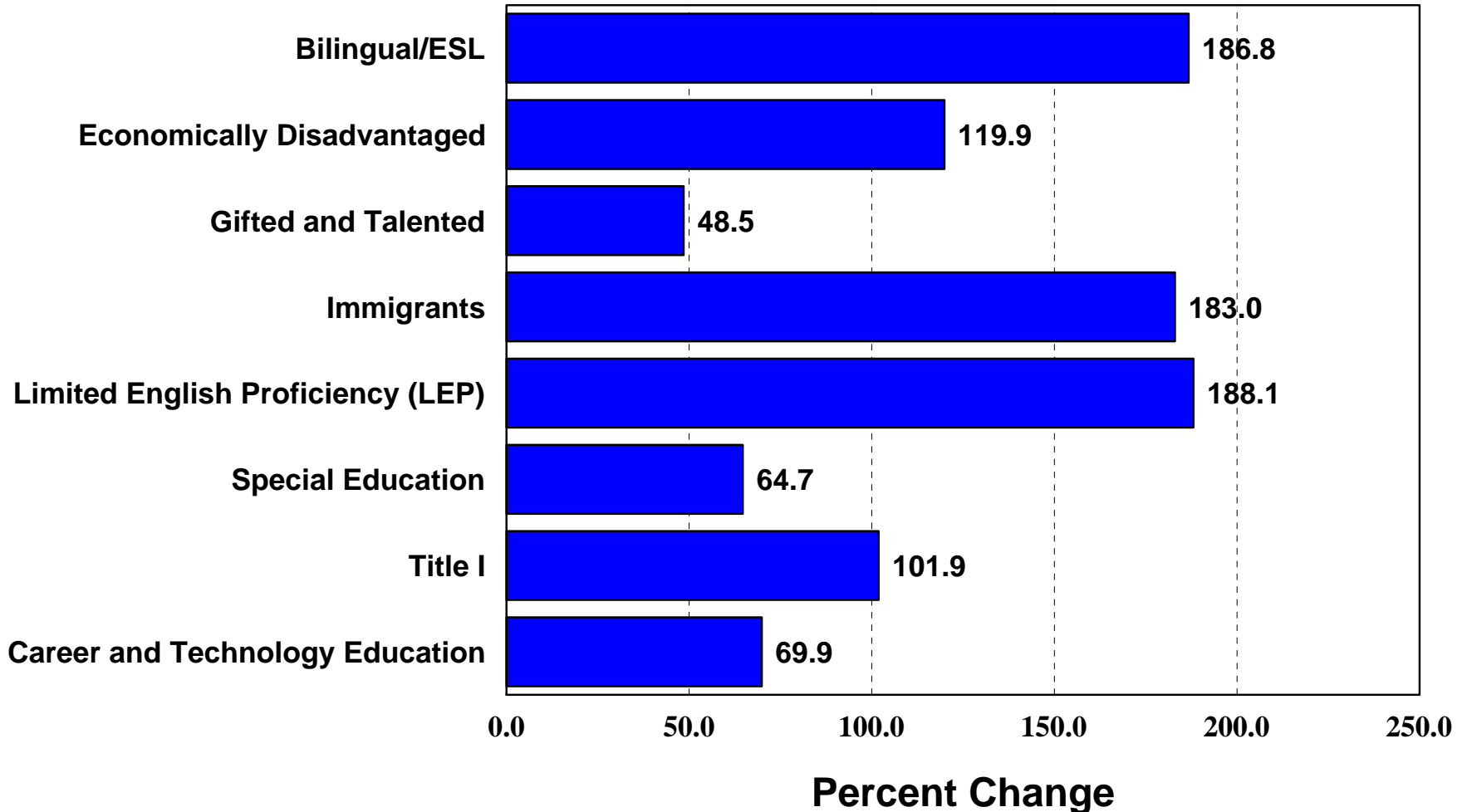
*Projections are shown for the 1.0 scenario

Enrollment in Public Community Colleges and Public Universities in Texas, 2000-2040*



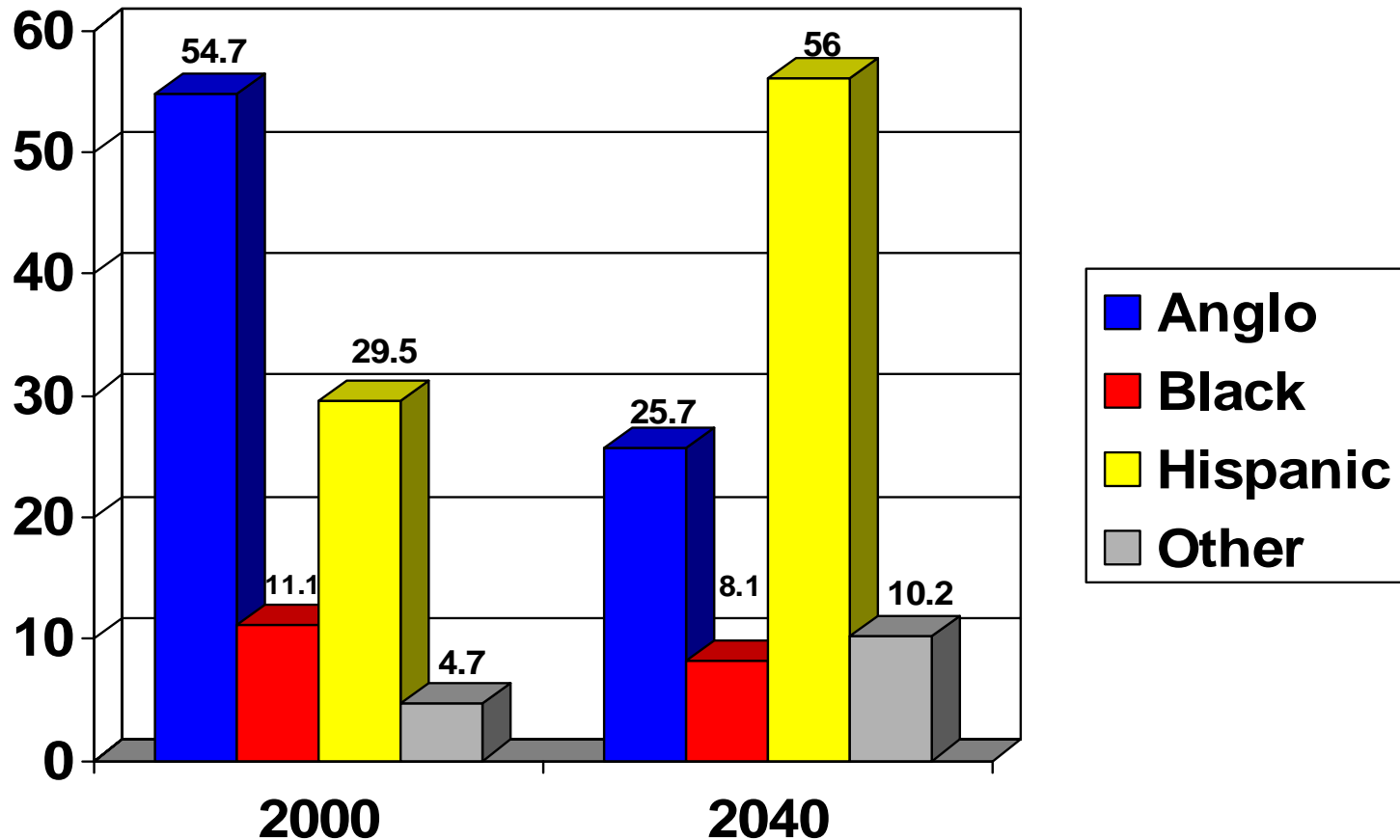
*Projections are for the 1.0 Scenario

Percent Change in Enrollment in Selected Elementary and Secondary School Programs in Texas, 2000 to 2040*

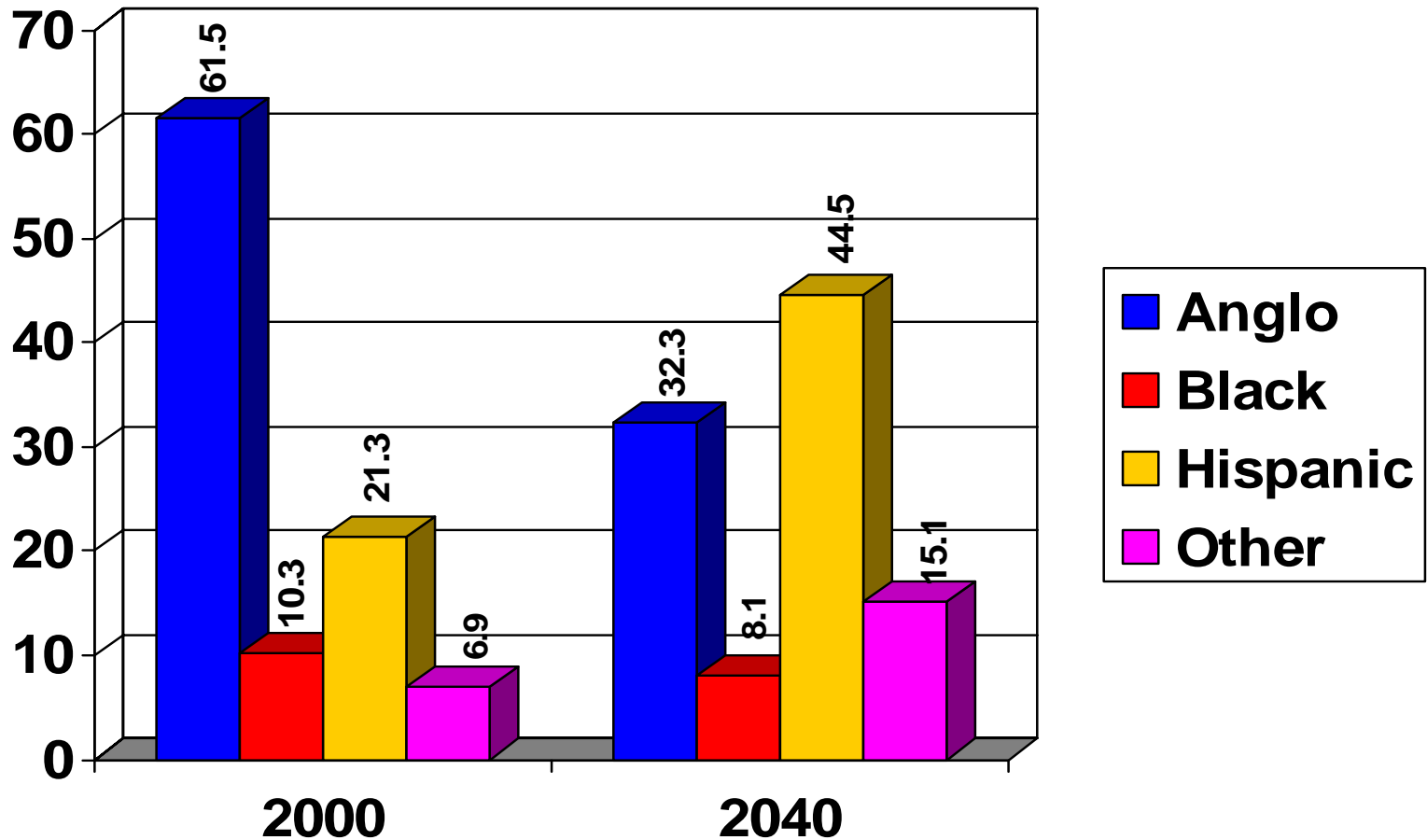


*Projections are for the 1.0 Scenario

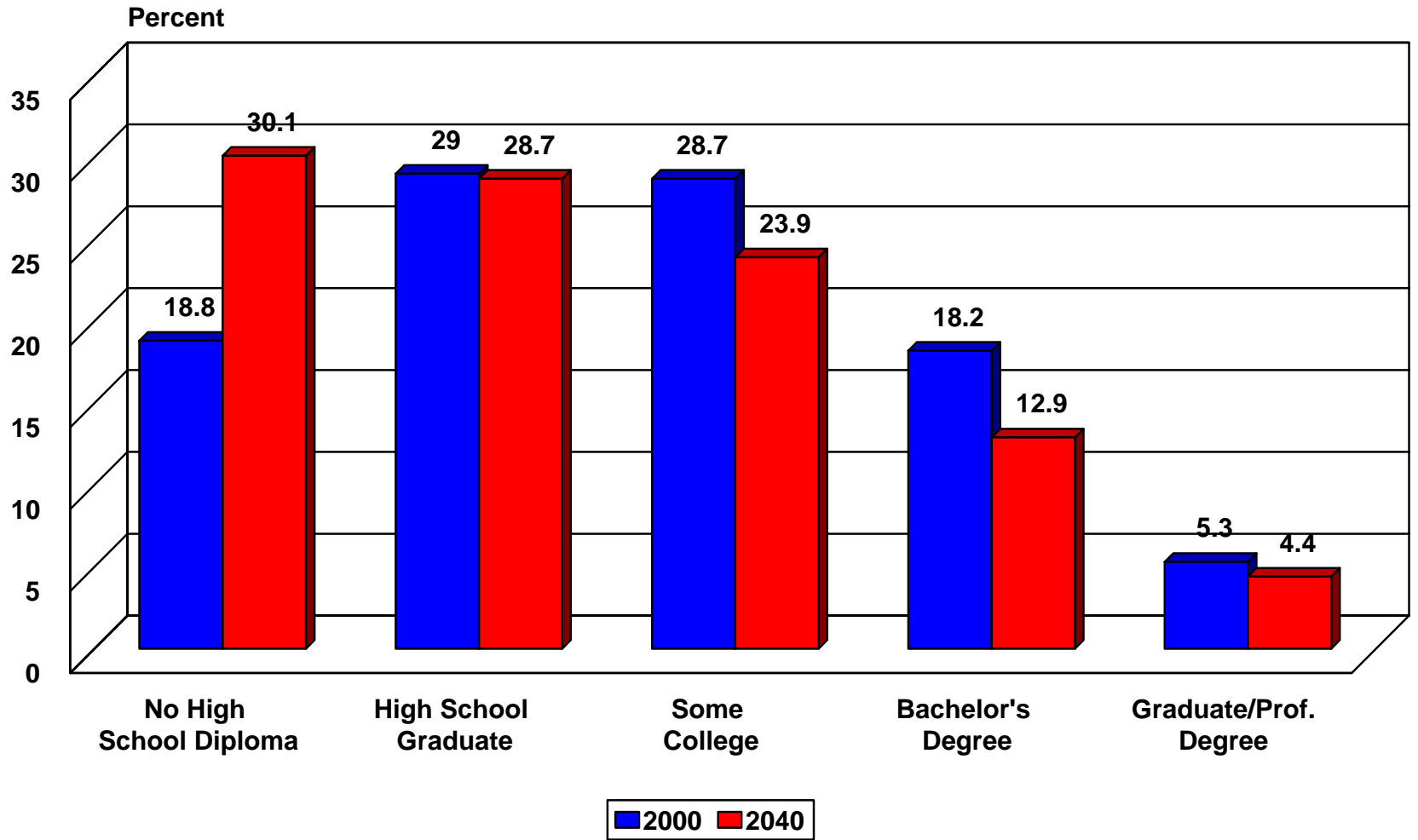
Projected Percent of Public Community College Enrollment by Race/Ethnicity in 2000 and Projections for 2040



Projected Percent of Public University Enrollment by Race/Ethnicity in 2000 and Projections for 2040



Projected Percent of Labor Force by Educational Attainment in Texas, 2000 and 2040



* Projections are shown for the 1.0 scenario

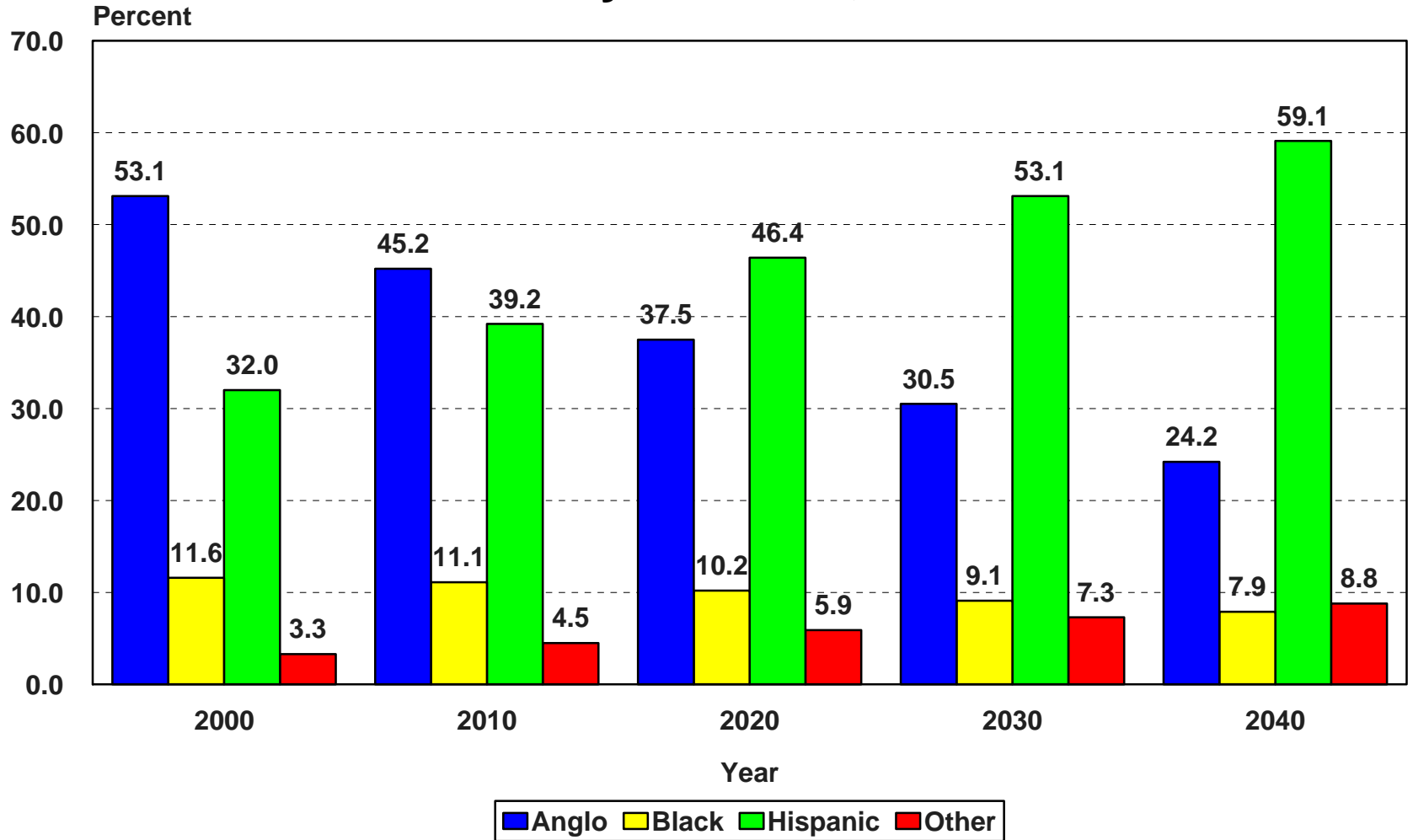
Texas Ranked

- Median Household Income - \$39,927
 - Texas ranked 30th
- Per Capita Income - \$19,617
 - Texas ranked 33rd
- Percent High School Graduates – 75.7%
 - Texas ranked 45th
- Percent College Graduates+ - 23.2%
 - Texas ranked 27

PROJECTIONS

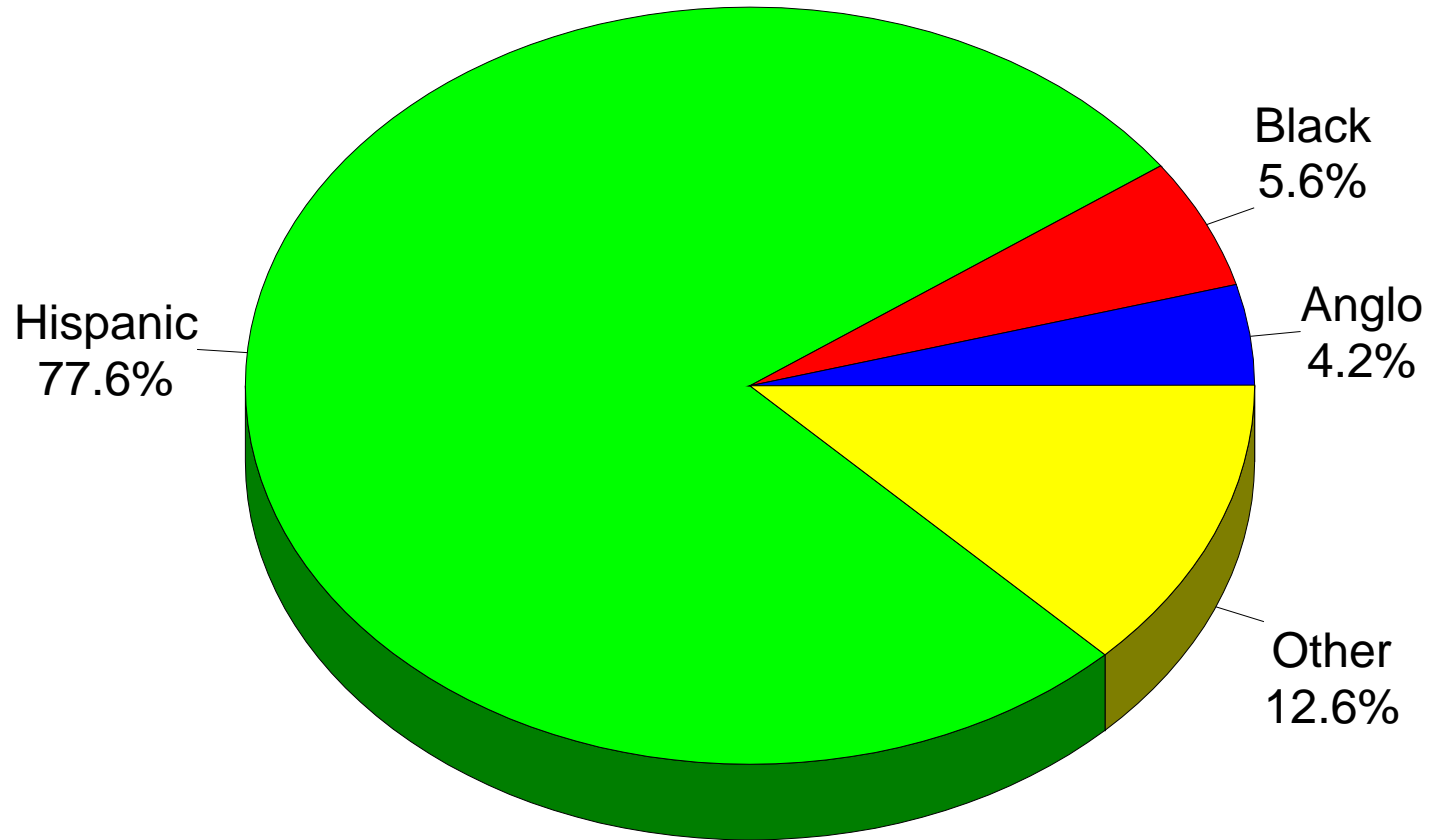


Projected Proportion of Population by Race/Ethnicity in Texas, 2000-2040*



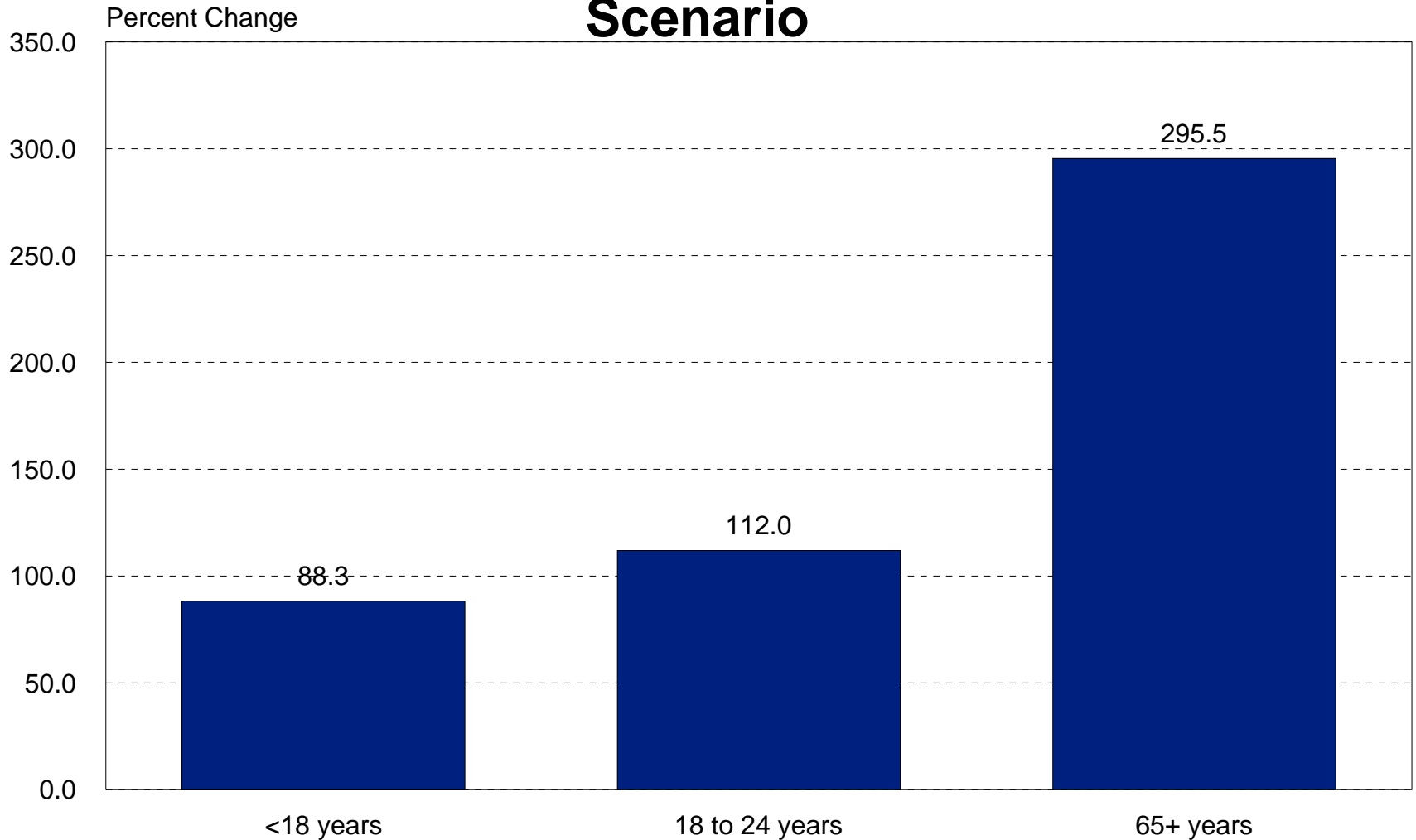
* Using U.S. Census count for 2000 and Texas State Data Center 1.0 population projection scenario for 2010-2040

Projected Percent of Net Change Attributable to Each Race/Ethnicity Group for 2000-2040*

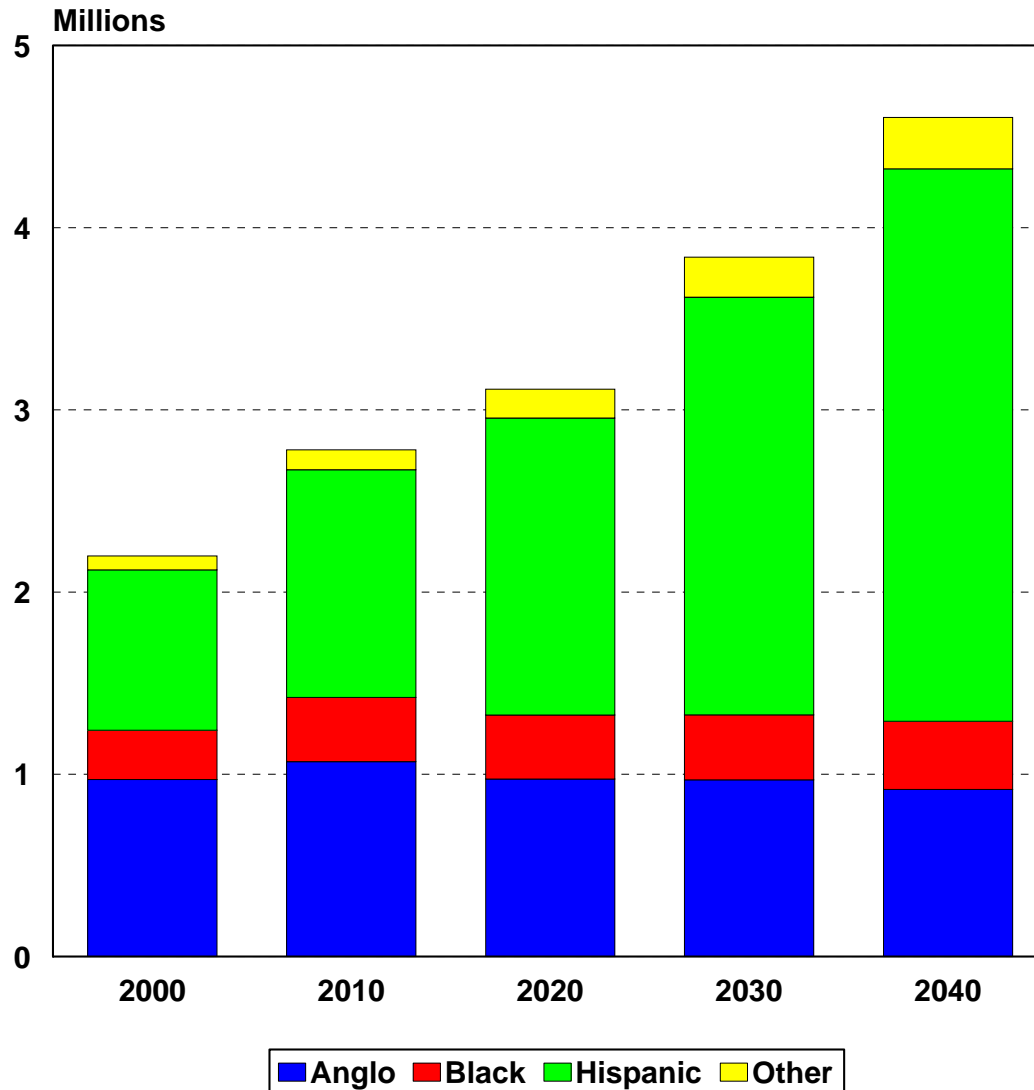


*Using U.S. Census count for 2000 and Texas State Data Center 1.0 population projection scenario for 2040.

Percent Change from 2000 to 2040 in Selected Age Groups in the Texas Population Under the 1.0 Scenario



Projected Texas Population Aged 18-24 by Race/Ethnicity in Texas, 2000-2040*

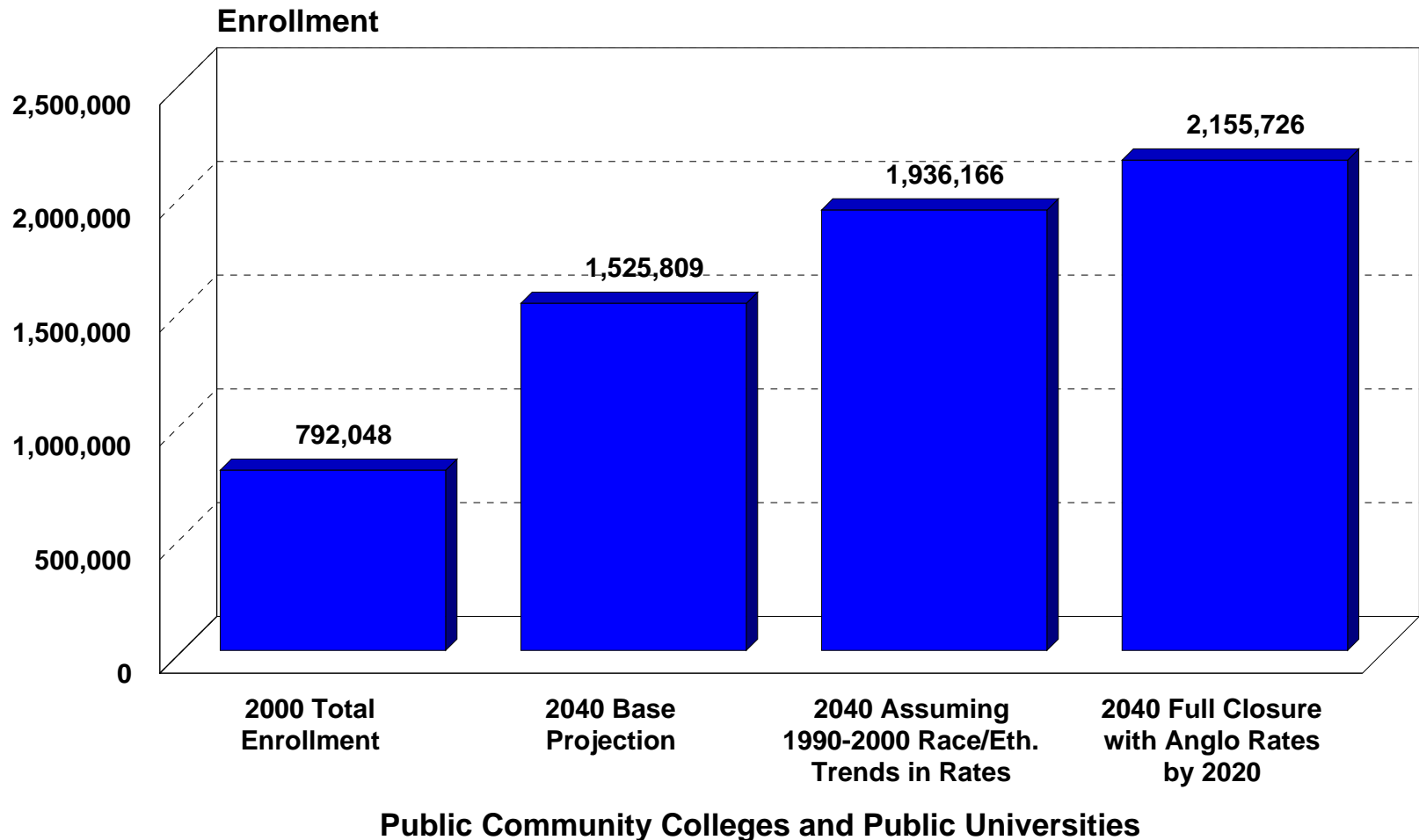


* Projections are shown for the 1.0 scenario

**Percent Change in Projected Public
Elementary and Secondary, Public Community
College and Public University Enrollment in
Texas Assuming Rates of Net Migration Equal
to 1990-2000 (1.0 Scenario)**

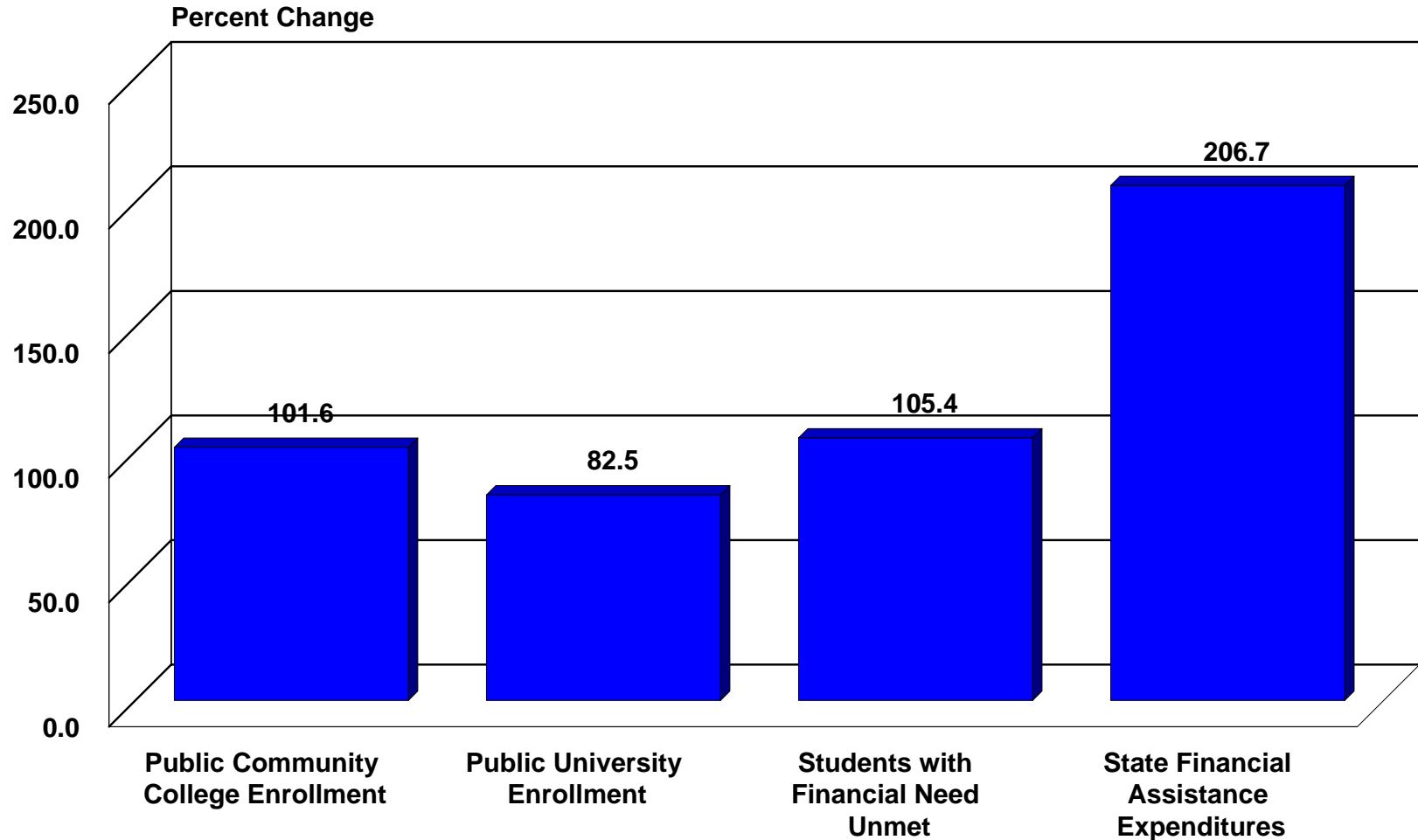
Time Period	Anglo	Black	Hispanic	Other	Total
Public Elementary and Secondary					
2000-2010	-5.5	0.4	28.1	40.2	9.9
2010-2020	-1.5	1.2	37.5	35.0	18.2
2020-2030	-5.7	3.5	31.7	30.2	16.9
2030-2040	-8.0	-3.0	27.5	37.6	16.1
2000-2040	-19.2	2.0	195.7	239.3	76.2
Public Community Colleges					
2000-2010	3.8	21.5	48.8	50.7	21.2
2010-2020	-3.3	8.9	36.7	47.0	15.5
2020-2030	-1.2	6.1	40.0	43.4	20.5
2030-2040	-4.4	4.7	34.6	37.3	19.5
2000-2040	-5.2	46.8	283.4	336.1	101.6
Public Universities					
2000-2010	6.5	24.3	48.4	45.8	20.0
2010-2020	-5.2	5.4	36.5	44.8	11.1
2020-2030	-0.6	4.3	39.5	40.9	17.5
2030-2040	-4.4	4.7	34.8	33.2	16.5
2000-2040	-4.1	43.1	281.2	296.4	82.5

Enrollment in Public Community Colleges and Public Universities in Texas in 2000 and Projected for 2040* Under Alternative Trends in Enrollment Rates



* Projections are shown for the 1.0 scenario

Percent Change in Public Community College Enrollment, Public University Enrollment, Students with Financial Need Unmet by Household Resources, and State Financial Assistance Expenditures for Public Higher Education in Texas, 2000-2040*



*Projections are shown for the 1.0 scenario

Muchas Gracias

Cruz C. Torres

Phone 979 - 845 - 8522

e-mail ctorres@tamu.edu